

Converting Colors

$Yxy(53.5160, 0.3340, 0.3352)$

Have a look what the booklet for
Yxy(53.5160, 0.3340, 0.3352)
contains.

Yxy(53.5575, 0.3342, 0.3350)	3
<i>Conversions</i>	4
<i>Details</i>	6
<i>Harmonies</i>	12
<i>Previews</i>	24
<i>Color Blindness Simulation</i>	27
<i>CSS Examples</i>	30

Color

Yxy(53.5575, 0.3342, 0.3350)

Conversions

Conversions Part 1

Format	Color
Hex	D2BDB8
RGB	210, 189, 184
RGB Percent	82%, 74%, 72%
CMY	0.1765, 0.2588, 0.2783
CMYK	0.00, 0.10, 0.12, 0.18
HSL	11°, 22%, 77%
HSV	11°, 12%, 82%
XYZ	53.4296, 53.5575, 52.8860
YIQ	194.7090, 14.1210, 2.8970

Conversions

Conversions Part 2

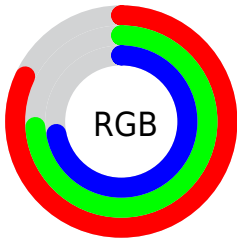
Format	Color
R _Y B	210, 190, 184
Decimal	13811128
CIE Lab	78.20, 6.61, 5.21
CIE LCh	78, 8.410, 38.241
Yxy	53.5575, 0.3342, 0.3350
Android (android.graphics.Color)	4292001208 (0xFFD2BDB8)
YUV	194.7090, -5.2795, 13.4102
Hunter-Lab	73.1830, 2.2494, 8.3819

Details

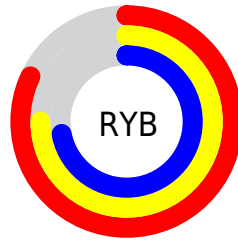
The Yxy color **53.5575, 0.3342, 0.3350** is a light color, and the websafe version is hex **CCCCCC**. A complement of this color would be **58.5230, 0.2938, 0.3229**, and the grayscale version is **54.4189, 0.3127, 0.3290**.

A 20% lighter version of the original color is **92.8561, 0.3222, 0.3339**, and **26.2156, 0.3397, 0.3371** is the 20% darker color. If you saturate the color by 10%, you get **45.8608, 0.3557, 0.3402**, and if you desaturate by 10%, it is **62.2449, 0.3164, 0.3301**.

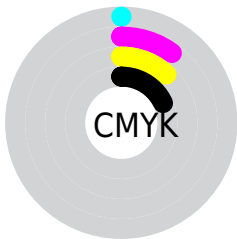
Distribution



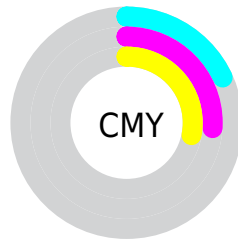
- Red (82%)
- Green (74%)
- Blue (72%)



- Red (82%)
- Yellow (75%)
- Blue (72%)



- Cyan (0%)
- Magenta (10%)
- Yellow (12%)
- Black (18%)





- Cyan (18%)
- Magenta (26%)
- Yellow (28%)

Brightness & Saturation Gradients


These gradients show how the Yxy color 53.5575, 0.3342, 0.3350 changes by changing the brightness by 10 percent. The first figure shows a shift by +10% for each color and the second figure -10%.

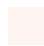
Similar to the brightness gradients but the following saturation gradients show a change of the Yxy color 53.5575, 0.3342, 0.3350 by changing the saturation by 10% instead.


 53.5575, 0.3342,
0.3350

 53.5575, 0.3342,
0.3350


400.4204, 0.3237,
0.3322

 38.2480, 0.3368,
0.3357


 95.4242, 0.3304,
0.3340

 26.1752, 0.3401,
0.3365


122.7502, 0.3290,
0.3336

 16.9548, 0.3444,
0.3376


154.8505, 0.3278,
0.3333

 10.2023, 0.3503,
0.3390

192.1096, 0.3267,
0.3330

 5.5333, 0.3589,
0.3409

234.9116, 0.3258,
0.3328

 2.5634, 0.3726,
0.3437

283.6412, 0.3250,

 0.9083, 0.4037,

0.3325

0.3533

338.6827, 0.3243,
0.3323

0.0000, 0.0000,
0.0000

53.5575, 0.3342,
0.3350

53.5575, 0.3342,
0.3350

45.8608, 0.3557,
0.3402

62.2449, 0.3164,
0.3301

39.1125, 0.3816,
0.3456

71.9493, 0.3018,
0.3256

33.2779, 0.4125,
0.3508

82.7047, 0.2896,
0.3215

28.3173, 0.4483,
0.3553

92.4413, 0.2860,
0.3289

24.1880, 0.4883,
0.3585

■ 20.8438, 0.5302,
0.3593

■ 18.2336, 0.5699,
0.3569

■ 16.3002, 0.6022,
0.3512

■ 15.2325, 0.6204,
0.3456

Harmonies

Analogous

The Analogous color harmony consists of three colors that are next to each other on the color wheel.



53.5575, 0.3285, 0.3252



53.5575, 0.3342, 0.3350



53.5575, 0.3340, 0.3434

Triad

The Triadic color harmony groups three colors that are evenly spaced from another and form a triangle on the color wheel.



53.5575, 0.3342, 0.3350



53.5575, 0.3067, 0.3420



53.5575, 0.2975, 0.3102

Complementary

The Complementary color scheme is a pair of colors which are on the opposite of each other on the color wheel.



53.5575, 0.3342, 0.3350



58.5230, 0.2938, 0.3229

Split Complementary

Split-complementary colors differ from the complementary color scheme. The scheme consists of three colors, the original color and two neighbors of the complement color.



53.5575, 0.2918, 0.3142



53.5575, 0.3342, 0.3350



53.5575, 0.2971, 0.3326

Square

The Square scheme is like the rectangle color scheme, but the four colors are evenly spaced on the color wheel.



53.5575, 0.3342, 0.3350



53.5575, 0.3180, 0.3477



53.5575, 0.2917, 0.3224



53.5575, 0.3072, 0.3111

Rectangle

The Rectangle color scheme consists of four colors that form a rectangle on the color wheel.



53.5575, 0.3342, 0.3350



53.5575, 0.3306, 0.3471



53.5575, 0.2917, 0.3224



53.5575, 0.2950, 0.3110

Sweetspot

The Sweet Spot groups the original color and five complimentary colors.



53.5599, 0.3342, 0.3350



94.2107, 0.3192, 0.3309



52.4150, 0.3178, 0.3042



19.9381, 0.3205, 0.3313



0.0000, 0.0000, 0.0000



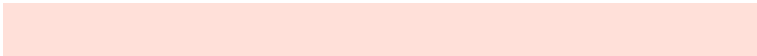
21.4041, 0.3127, 0.3290

Same Dimension

The Same Dimension uses a secret algorithm to generate beautiful new colors.



53.5599, 0.3342, 0.3350



79.6070, 0.3398, 0.3364



59.2991, 0.3323, 0.3500



12.1693, 0.3286, 0.3335



9.4026, 0.6182, 0.3473



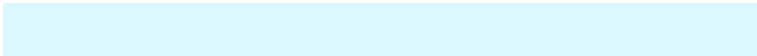
0.6369, 0.5835, 0.3749

Inverse Universe

The Inverse Universe completely reimagines the original color for something new.



58.5230, 0.2938, 0.3229



88.8701, 0.2896, 0.3214



52.6586, 0.2934, 0.3071



13.0063, 0.2983, 0.3244



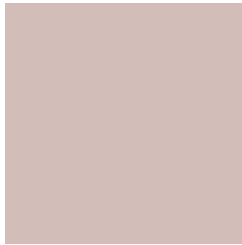
20.4696, 0.2075, 0.2669



1.2458, 0.2110, 0.2795

Previews

White Background



This preview shows how the Yxy color 53.5575, 0.3342, 0.3350 looks on a white background.

Color Contrast Check

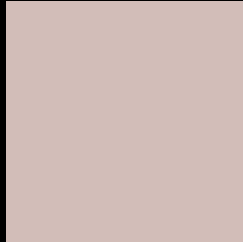
Large Text (above 18pt) WCAG AA × Fail

Any Text WCAG AA × Fail

Large Text (above 18pt) WCAG AAA × Fail

Any Text WCAG AAA × Fail

Black Background



This preview shows how the Yxy color 53.5575, 0.3342, 0.3350 looks on a black background.

Color Contrast Check

Large Text (above 18pt) WCAG AA ✓ Pass

Any Text WCAG AA ✓ Pass

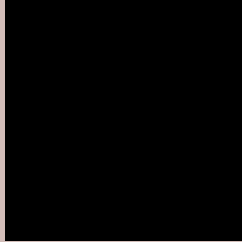
Large Text (above 18pt) WCAG AAA ✓ Pass

Any Text WCAG AAA ✓ Pass

If you want to check with other color combinations, try the [Color Contrast Checker](#).

Yxy 53.5575, 0.3342, 0.3350

Background



This preview shows how black text looks on a background with the Yxy color 53.5575, 0.3342, 0.3350.



This preview shows how white text looks on a background with the Yxy color 53.5575, 0.3342, 0.3350.

Color Blindness Simulation

Color vision deficiency is a very complex topic, and I could not describe the different causes any better than Wikipedia does, so if you want to learn more, you should check out their [article about color blindness](#).

Dichromacy



Original Color

53.5575, 0.3342, 0.3350

Protanopia

53.8272, 0.3229, 0.3376

Deuteranopia

53.6003, 0.3397, 0.3326



Tritanopia

53.3319, 0.3227, 0.3115

Trichromacy



Original Color

53.5575, 0.3342, 0.3350

Protanomaly

53.8986, 0.3271, 0.3375

Deuteranomaly

53.7233, 0.3378, 0.3338

Tritanomaly

53.3297, 0.3265, 0.3196

Monochromacy



Original Color

53.5575, 0.3342, 0.3350

Achromatopsia

54.5724, 0.3127, 0.3290

Achromatomaly

54.1809, 0.3199, 0.3314

CSS Examples

Text

The CSS property to change the color of the text to Yxy 53.5575, 0.3342, 0.3350 is called "color". The color property can be set on classes, ids or directly on the HTML element.

This example shows how text in the color `rgb(210, 189, 184)` looks like.

```
.text, #text, p{  
    color:rgb(210, 189, 184)  
}
```

If you want to add a text shadow in that color use the text-shadow property, you can generate a text shadow directly with our [CSS Text Shadow Generator](#).

Here you see how black text with a 4 pixel rgb(210, 189, 184) colored shadow looks like.

```
.shadow{ text-shadow: 4px 4px 2px rgb(210, 189, 184) }
```

Border

The CSS property to change the border of an element to Yxy 53.5575, 0.3342, 0.3350 is called "border". The border property can be set on classes, ids or directly on the HTML element.

This example shows the color as border, it can be applied via the CSS property "border" or "border-color".

```
.border, #border, table{ border:4px solid rgb(210, 189, 184) }
```

If only the border color should be changed use the property `border-color`.

```
.border{ border-color:rgb(210, 189, 184) }
```

If you want to add a box shadow in that color use:

Here you see how a box with a 4 pixel `rgb(210, 189, 184)` colored shadow looks like.

```
.boxshadow{ -moz-box-shadow:4px 4px 4px  
4px rgb(210, 189, 184); -webkit-box-  
shadow:4px 4px 4px 4px rgb(210, 189, 184);  
box-shadow:4px 4px 4px 4px rgb(210, 189,  
184) }
```


Background

The CSS property to change the background color of an element to Yxy 53.5575, 0.3342, 0.3350 is called "background". The background property can be set on classes, ids or directly on the HTML element.

```
.background, #background, body{  
background: rgb(210, 189, 184) }
```

If only the background color should be changed can be used:

```
.background{ background-color: rgb(210,  
189, 184) }
```

This example shows the color as background, it is applied via the CSS property "background".

To optimize and compress your CSS code, you can use our [online CSS compressor and optimizer](#) based on csstidy. If you want to create a linear or radial gradient as background or border, check our [CSS Gradient Generator](#).

Hey! You found this booklet interesting? Support Converting Colors with the new Membership Option!

The pro membership hides all ads, plus gives you double the colors in the color bucket, and more awesome pro features!

[Learn more, Memberships starting at \\$2.50/m!](#)

**Follow me
on Twitter!**

@ConvertingColor