

Converting Colors

Yxy(53.6122, 0.3470, 0.3291)

Have a look what the booklet for
Yxy(53.6122, 0.3470, 0.3291)
contains.

Yxy(53.5890, 0.3472, 0.3291)	3
Conversions	4
Details	6
Harmonies	12
Previews	24
Color Blindness Simulation	27
CSS Examples	30

Color

Yxy(53.5890, 0.3472, 0.3291)

Conversions

Conversions Part 1

Format	Color
Hex	E0B8B8
RGB	224, 184, 184
RGB Percent	88%, 72%, 72%
CMY	0.1215, 0.2784, 0.2784
CMYK	0.00, 0.18, 0.18, 0.12
HSL	0°, 39%, 80%
HSV	0°, 18%, 88%
XYZ	56.5363, 53.5890, 52.7097
YIQ	195.9600, 23.8400, 8.4800

Conversions

Conversions Part 2

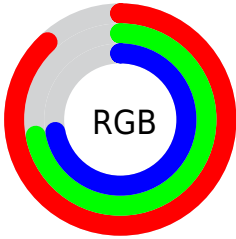
Format	Color
R _Y B	224, 184, 184
Decimal	14727352
CIE Lab	78.22, 14.37, 5.41
CIE LCh	78, 15.358, 20.633
Yxy	53.5890, 0.3472, 0.3291
Android (android.graphics.Color)	4292917432 (0xFFE0B8B8)
YUV	195.9600, -5.8963, 24.5911
Hunter-Lab	73.2045, 9.7488, 8.5524

Details

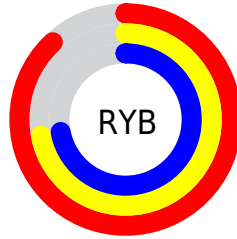
The Yxy color **53.5890, 0.3472, 0.3291** is a light color, and the websafe version is hex **FFCCCC**. A complement of this color would be **68.8930, 0.2859, 0.3289**, and the grayscale version is **55.2041, 0.3127, 0.3290**.

A 20% lighter version of the original color is **89.8714, 0.3226, 0.3290**, and **26.1961, 0.3563, 0.3291** is the 20% darker color. If you saturate the color by 10%, you get **44.1437, 0.3735, 0.3292**, and if you desaturate by 10%, it is **64.6615, 0.3262, 0.3290**.

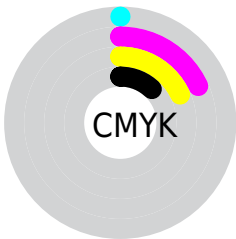
Distribution



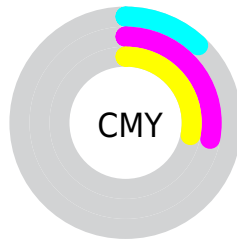
- Red (88%)
- Green (72%)
- Blue (72%)



- Red (88%)
- Yellow (72%)
- Blue (72%)



- Cyan (0%)
- Magenta (18%)
- Yellow (18%)
- Black (12%)




- Cyan (12%)
- Magenta (28%)
- Yellow (28%)

Brightness & Saturation Gradients


These gradients show how the Yxy color 53.5890, 0.3472, 0.3291 changes by changing the brightness by 10 percent. The first figure shows a shift by +10% for each color and the second figure -10%.


Similar to the brightness gradients but the following saturation gradients show a change of the Yxy color 53.5890, 0.3472, 0.3291 by changing the saturation by 10% instead.


 53.5890, 0.3472,
0.3291

 53.5890, 0.3472,
0.3291

400.5408, 0.3303,
0.3293

 38.2732, 0.3513,
0.3290


 95.4705, 0.3411,
0.3292

 26.1948, 0.3566,
0.3289


122.8050, 0.3388,
0.3292

 16.9694, 0.3635,
0.3286


154.9145, 0.3368,
0.3292

 10.2127, 0.3731,
0.3282

192.1834, 0.3352,
0.3293

 5.5402, 0.3869,
0.3273

234.9960, 0.3337,
0.3293

 2.5676, 0.4089,
0.3255

283.7369, 0.3324,

 0.9104, 0.4555,

0.3293

338.7904, 0.3313,
0.3293

0.3255

0.0000, 1.0000,
0.0000

0.0000, 0.0000,
0.0000

53.5890, 0.3472,
0.3291

53.5890, 0.3472,
0.3291

44.1437, 0.3735,
0.3292

64.6615, 0.3262,
0.3290

36.2422, 0.4060,
0.3293

77.4251, 0.3094,
0.3290

29.8046, 0.4452,
0.3294

91.9491, 0.2960,
0.3290

24.7411, 0.4904,
0.3295

94.5901, 0.2941,
0.3289

■ 20.9517, 0.5386,
0.3297

■ 18.3233, 0.5838,
0.3298

■ 16.7227, 0.6183,
0.3299

■ 15.9645, 0.6371,
0.3300

■ 15.8502, 0.6401,
0.3300

Harmonies

Analogous

The Analogous color harmony consists of three colors that are next to each other on the color wheel.



53.5890, 0.3314, 0.3124



53.5890, 0.3472, 0.3291



53.5890, 0.3534, 0.3463

Triad

The Triadic color harmony groups three colors that are evenly spaced from another and form a triangle on the color wheel.



53.5890, 0.3472, 0.3291



53.5890, 0.3135, 0.3605



53.5890, 0.2780, 0.2980

Complementary

The Complementary color scheme is a pair of colors which are on the opposite of each other on the color wheel.



53.5890, 0.3472, 0.3291



68.8930, 0.2859, 0.3289

Split Complementary

Split-complementary colors differ from the complementary color scheme. The scheme consists of three colors, the original color and two neighbors of the complement color.



53.5890, 0.2737, 0.3097



53.5890, 0.3472, 0.3291



53.5890, 0.2937, 0.3463

Square

The Square scheme is like the rectangle color scheme, but the four colors are evenly spaced on the color wheel.



53.5890, 0.3472, 0.3291



53.5890, 0.3335, 0.3653



53.5890, 0.2793, 0.3274



53.5890, 0.2915, 0.2947

Rectangle

The Rectangle color scheme consists of four colors that form a rectangle on the color wheel.



53.5890, 0.3472, 0.3291



53.5890, 0.3512, 0.3560



53.5890, 0.2793, 0.3274



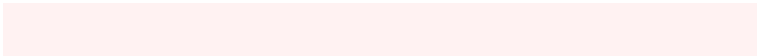
53.5890, 0.2755, 0.3010

Sweetspot

The Sweet Spot groups the original color and five complimentary colors.



53.5914, 0.3472, 0.3291



91.3392, 0.3211, 0.3290



55.5131, 0.3148, 0.2849



19.2999, 0.3223, 0.3290



0.0000, 0.0000, 0.0000



21.4041, 0.3127, 0.3290

Same Dimension

The Same Dimension uses a secret algorithm to generate beautiful new colors.



53.5914, 0.3472, 0.3291



67.4823, 0.3552, 0.3291



62.5002, 0.3433, 0.3517



13.7006, 0.3292, 0.3291



9.2244, 0.6401, 0.3300



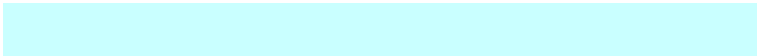
0.6394, 0.6401, 0.3300

Inverse Universe

The Inverse Universe completely reimagines the original color for something new.



68.8930, 0.2859, 0.3289



91.2191, 0.2813, 0.3289



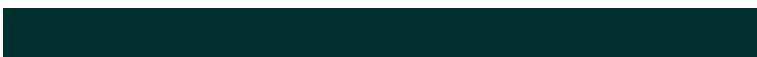
58.7624, 0.2847, 0.3052



15.5723, 0.2982, 0.3290



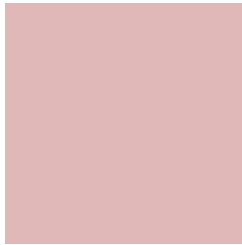
34.1619, 0.2247, 0.3287



2.3679, 0.2247, 0.3287

Previews

White Background



This preview shows how the Yxy color 53.5890, 0.3472, 0.3291 looks on a white background.

Color Contrast Check

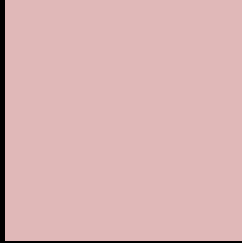
Large Text (above 18pt) WCAG AA × Fail

Any Text WCAG AA × Fail

Large Text (above 18pt) WCAG AAA × Fail

Any Text WCAG AAA × Fail

Black Background



This preview shows how the Yxy color 53.5890, 0.3472, 0.3291 looks on a black background.

Color Contrast Check

Large Text (above 18pt) WCAG AA ✓ Pass

Any Text WCAG AA ✓ Pass

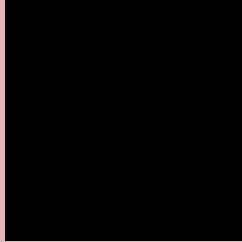
Large Text (above 18pt) WCAG AAA ✓ Pass

Any Text WCAG AAA ✓ Pass

If you want to check with other color combinations, try the [Color Contrast Checker](#).

Yxy 53.5890, 0.3472, 0.3291

Background



This preview shows how black text looks on a background with the Yxy color 53.5890, 0.3472, 0.3291.



This preview shows how white text looks on a background with the Yxy color 53.5890, 0.3472, 0.3291.

Color Blindness Simulation

Color vision deficiency is a very complex topic, and I could not describe the different causes any better than Wikipedia does, so if you want to learn more, you should check out their [article about color blindness](#).

Dichromacy



Original Color

53.5890, 0.3472, 0.3291

Protanopia

53.8198, 0.3198, 0.3339

Deuteranopia

53.5585, 0.3405, 0.3338



Tritanopia

53.6102, 0.3392, 0.3132

Trichromacy



Original Color

53.5890, 0.3472, 0.3291

Protanomaly

53.6802, 0.3291, 0.3327

Deuteranomaly

53.5968, 0.3433, 0.3326

Tritanomaly

53.6803, 0.3415, 0.3188

Monochromacy



Original Color

53.5890, 0.3472, 0.3291

Achromatopsia

55.2011, 0.3127, 0.3290

Achromatomaly

54.6269, 0.3242, 0.3290

CSS Examples

Text

The CSS property to change the color of the text to Yxy 53.5890, 0.3472, 0.3291 is called "color". The color property can be set on classes, ids or directly on the HTML element.

This example shows how text in the color `rgb(224, 184, 184)` looks like.

```
.text, #text, p{  
    color:rgb(224, 184, 184)  
}
```

If you want to add a text shadow in that color use the text-shadow property, you can generate a text shadow directly with our [CSS Text Shadow Generator](#).

Here you see how black text with a 4 pixel rgb(224, 184, 184) colored shadow looks like.

```
.shadow{ text-shadow: 4px 4px 2px rgb(224, 184, 184) }
```

Border

The CSS property to change the border of an element to Yxy 53.5890, 0.3472, 0.3291 is called "border". The border property can be set on classes, ids or directly on the HTML element.

This example shows the color as border, it can be applied via the CSS property "border" or "border-color".

```
.border, #border, table{ border:4px solid rgb(224, 184, 184) }
```

If only the border color should be changed use the property `border-color`.

```
.border{ border-color:rgb(224, 184, 184) }
```

If you want to add a box shadow in that color use:

Here you see how a box with a 4 pixel `rgb(224, 184, 184)` colored shadow looks like.

```
.boxshadow{ -moz-box-shadow:4px 4px 4px  
4px rgb(224, 184, 184); -webkit-box-  
shadow:4px 4px 4px 4px rgb(224, 184, 184);  
box-shadow:4px 4px 4px 4px rgb(224, 184,  
184) }
```


Background

The CSS property to change the background color of an element to Yxy 53.5890, 0.3472, 0.3291 is called "background". The background property can be set on classes, ids or directly on the HTML element.

```
.background, #background, body{  
background: rgb(224, 184, 184) }
```

If only the background color should be changed can be used:

```
.background{ background-color: rgb(224,  
184, 184) }
```

This example shows the color as background, it is applied via the CSS property "background".

To optimize and compress your CSS code, you can use our [online CSS compressor and optimizer](#) based on csstidy. If you want to create a linear or radial gradient as background or border, check our [CSS Gradient Generator](#).

Hey! You found this booklet interesting? Support Converting Colors with the new Membership Option!

The pro membership hides all ads, plus gives you double the colors in the color bucket, and more awesome pro features!

[Learn more, Memberships starting at \\$2.50/m!](#)

**Follow me
on Twitter!**

@ConvertingColor