

Converting Colors

$Yxy(53.6361, 0.3371, 0.3271)$

Have a look what the booklet for
Yxy(53.6361, 0.3371, 0.3271)
contains.

Yxy(53.5004, 0.3374, 0.3267)	3
Conversions	4
Details	6
Harmonies	12
Previews	24
Color Blindness Simulation	27
CSS Examples	30

Color

Yxy(53.5004, 0.3374, 0.3267)

Conversions

Conversions Part 1

Format	Color
Hex	D9BABC
RGB	217, 186, 188
RGB Percent	85%, 73%, 74%
CMY	0.1490, 0.2706, 0.2626
CMYK	0.00, 0.14, 0.13, 0.15
HSL	356°, 29%, 79%
HSV	356°, 14%, 85%
XYZ	55.2526, 53.5004, 55.0070
YIQ	195.4970, 17.8340, 7.1940

Conversions

Conversions Part 2

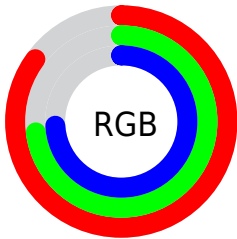
Format	Color
R _Y B	217, 186, 188
Decimal	14269116
CIE Lab	78.17, 11.39, 3.07
CIE LCh	78, 11.798, 15.100
Yxy	53.5004, 0.3374, 0.3267
Android (android.graphics.Color)	4292459196 (0xFFD9BABC)
YUV	195.4970, -3.6960, 18.8581
Hunter-Lab	73.1440, 6.8362, 6.6125

Details

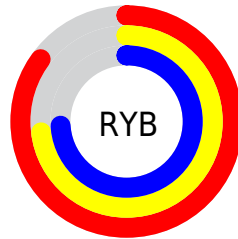
The Yxy color $53.5004, 0.3374, 0.3267$ is a light color, and the websafe version is hex `FFCCCC`. A complement of this color would be $64.9682, 0.2923, 0.3313$, and the grayscale version is $54.9017, 0.3127, 0.3290$.

A 20% lighter version of the original color is $91.2959, 0.3200, 0.3271$, and $26.2057, 0.3441, 0.3260$ is the 20% darker color. If you saturate the color by 10%, you get $44.2289, 0.3600, 0.3250$, and if you desaturate by 10%, it is $64.2880, 0.3193, 0.3283$.

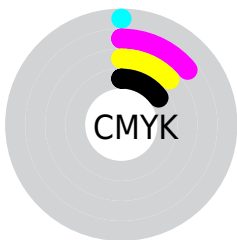
Distribution



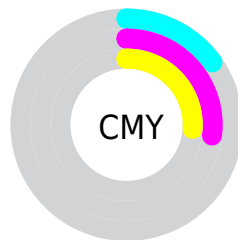
- Red (85%)
- Green (73%)
- Blue (74%)



- Red (85%)
- Yellow (73%)
- Blue (74%)



- Cyan (0%)
- Magenta (14%)
- Yellow (13%)
- Black (15%)



- Cyan (15%)
- Magenta (27%)
- Yellow (26%)

Brightness & Saturation Gradients

These gradients show how the Yxy color 53.5004, 0.3374, 0.3267 changes by changing the brightness by 10 percent. The first figure shows a shift by +10% for each color and the second figure -10%.


Similar to the brightness gradients but the following saturation gradients show a change of the Yxy color 53.5004, 0.3374, 0.3267 by changing the saturation by 10% instead.


 53.5004, 0.3374,
0.3267

 53.5004, 0.3374,
0.3267

400.2020, 0.3253,
0.3279

 38.2024, 0.3404,
0.3264


 95.3403, 0.3330,
0.3272

 26.1398, 0.3441,
0.3260

122.6510, 0.3314,
0.3273

 16.9283, 0.3491,
0.3254


154.7347, 0.3300,
0.3275

 10.1834, 0.3558,
0.3245

191.9757, 0.3288,
0.3276

 5.5207, 0.3657,
0.3232

234.7586, 0.3277,
0.3277

 2.5559, 0.3815,
0.3210

283.4677, 0.3268,

 0.9045, 0.4121,

0.3278

0.3176

338.4874, 0.3260,
0.3279

0.0000, 1.0000,
0.0000

0.0000, 0.0000,
0.0000

53.5004, 0.3374,
0.3267

53.5004, 0.3374,
0.3267

44.2289, 0.3600,
0.3250

64.2880, 0.3193,
0.3283

36.3989, 0.3879,
0.3233

76.6477, 0.3048,
0.3299

29.9400, 0.4221,
0.3217

90.6416, 0.2932,
0.3312

24.7733, 0.4624,
0.3205

93.4911, 0.2900,
0.3289

■ 20.8119, 0.5076,
0.3200

■ 17.9581, 0.5537,
0.3206

■ 16.0990, 0.5947,
0.3225

■ 15.0976, 0.6238,
0.3255

■ 14.7833, 0.6343,
0.3268

Harmonies

Analogous

The Analogous color harmony consists of three colors that are next to each other on the color wheel.



53.5004, 0.3244, 0.3141



53.5004, 0.3374, 0.3267



53.5004, 0.3437, 0.3402

Triad

The Triadic color harmony groups three colors that are evenly spaced from another and form a triangle on the color wheel.



53.5004, 0.3374, 0.3267



53.5004, 0.3164, 0.3543



53.5004, 0.2847, 0.3064

Complementary

The Complementary color scheme is a pair of colors which are on the opposite of each other on the color wheel.



53.5004, 0.3374, 0.3267



64.9682, 0.2923, 0.3313

Split Complementary

Split-complementary colors differ from the complementary color scheme. The scheme consists of three colors, the original color and two neighbors of the complement color.



53.5004, 0.2827, 0.3166



53.5004, 0.3374, 0.3267



53.5004, 0.3007, 0.3446

Square

The Square scheme is like the rectangle color scheme, but the four colors are evenly spaced on the color wheel.



53.5004, 0.3374, 0.3267



53.5004, 0.3313, 0.3566



53.5004, 0.2885, 0.3306



53.5004, 0.2940, 0.3024

Rectangle

The Rectangle color scheme consists of four colors that form a rectangle on the color wheel.



53.5004, 0.3374, 0.3267



53.5004, 0.3431, 0.3480



53.5004, 0.2885, 0.3306



53.5004, 0.2832, 0.3092

Sweetspot

The Sweet Spot groups the original color and five complimentary colors.



53.5028, 0.3374, 0.3267



93.0650, 0.3189, 0.3284



54.5656, 0.3127, 0.2937



19.6495, 0.3201, 0.3283



0.0000, 0.0000, 0.0000



21.4041, 0.3127, 0.3290

Same Dimension

The Same Dimension uses a secret algorithm to generate beautiful new colors.



53.5028, 0.3374, 0.3267



73.0519, 0.3434, 0.3262



59.3433, 0.3368, 0.3446



13.0652, 0.3281, 0.3275



8.9548, 0.6327, 0.3259



0.5851, 0.6113, 0.3141

Inverse Universe

The Inverse Universe completely reimagines the original color for something new.



53.5028, 0.3374, 0.3267



73.0519, 0.3434, 0.3262



58.4290, 0.2906, 0.3129



13.0652, 0.3281, 0.3275



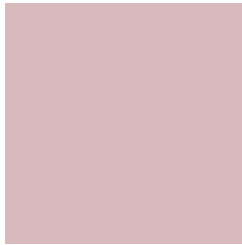
8.9548, 0.6327, 0.3259



0.5851, 0.6113, 0.3141

Previews

White Background



This preview shows how the Yxy color 53.5004, 0.3374, 0.3267 looks on a white background.

Color Contrast Check

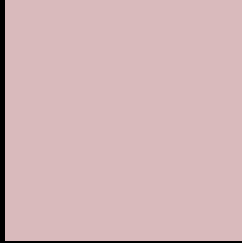
Large Text (above 18pt) WCAG AA × Fail

Any Text WCAG AA × Fail

Large Text (above 18pt) WCAG AAA × Fail

Any Text WCAG AAA × Fail

Black Background



This preview shows how the Yxy color 53.5004, 0.3374, 0.3267 looks on a black background.

Color Contrast Check

Large Text (above 18pt) WCAG AA ✓ Pass

Any Text WCAG AA ✓ Pass

Large Text (above 18pt) WCAG AAA ✓ Pass

Any Text WCAG AAA ✓ Pass

If you want to check with other color combinations, try the [Color Contrast Checker](#).

Yxy 53.5004, 0.3374, 0.3267

Background



This preview shows how black text looks on a background with the Yxy color 53.5004, 0.3374, 0.3267.



This preview shows how white text looks on a background with the Yxy color 53.5004, 0.3374, 0.3267.

Color Blindness Simulation

Color vision deficiency is a very complex topic, and I could not describe the different causes any better than Wikipedia does, so if you want to learn more, you should check out their [article about color blindness](#).

Dichromacy



Original Color

53.5004, 0.3374, 0.3267

Protanopia

53.8160, 0.3167, 0.3302

Deuteranopia

53.4676, 0.3347, 0.3279



Tritanopia

53.3099, 0.3296, 0.3117

Trichromacy



Original Color

53.5004, 0.3374, 0.3267

Protanomaly

53.4259, 0.3235, 0.3278

Deuteranomaly

53.6186, 0.3356, 0.3279

Tritanomaly

53.5435, 0.3327, 0.3175

Monochromacy



Original Color

53.5004, 0.3374, 0.3267

Achromatopsia

55.2011, 0.3127, 0.3290

Achromatomaly

54.3869, 0.3217, 0.3278

CSS Examples

Text

The CSS property to change the color of the text to Yxy 53.5004, 0.3374, 0.3267 is called "color". The color property can be set on classes, ids or directly on the HTML element.

This example shows how text in the color `rgb(217, 186, 188)` looks like.

```
.text, #text, p{  
    color:rgb(217, 186, 188)  
}
```

If you want to add a text shadow in that color use the text-shadow property, you can generate a text shadow directly with our [CSS Text Shadow Generator](#).

Here you see how black text with a 4 pixel rgb(217, 186, 188) colored shadow looks like.

```
.shadow{ text-shadow: 4px 4px 2px rgb(217, 186, 188) }
```

Border

The CSS property to change the border of an element to Yxy 53.5004, 0.3374, 0.3267 is called "border". The border property can be set on classes, ids or directly on the HTML element.

This example shows the color as border, it can be applied via the CSS property "border" or "border-color".

```
.border, #border, table{ border:4px solid rgb(217, 186, 188) }
```

If only the border color should be changed use the property `border-color`.

```
.border{ border-color:rgb(217, 186, 188) }
```

If you want to add a box shadow in that color use:

Here you see how a box with a 4 pixel `rgb(217, 186, 188)` colored shadow looks like.

```
.boxshadow{ -moz-box-shadow:4px 4px 4px  
4px rgb(217, 186, 188); -webkit-box-  
shadow:4px 4px 4px 4px rgb(217, 186, 188);  
box-shadow:4px 4px 4px 4px rgb(217, 186,  
188) }
```


Background

The CSS property to change the background color of an element to Yxy 53.5004, 0.3374, 0.3267 is called "background". The background property can be set on classes, ids or directly on the HTML element.

```
.background, #background, body{  
background: rgb(217, 186, 188) }
```

If only the background color should be changed can be used:

```
.background{ background-color: rgb(217,  
186, 188) }
```

This example shows the color as background, it is applied via the CSS property "background".

To optimize and compress your CSS code, you can use our [online CSS compressor and optimizer](#) based on csstidy. If you want to create a linear or radial gradient as background or border, check our [CSS Gradient Generator](#).

Hey! You found this booklet interesting? Support Converting Colors with the new Membership Option!

The pro membership hides all ads, plus gives you double the colors in the color bucket, and more awesome pro features!

[Learn more, Memberships starting at \\$2.50/m!](#)

**Follow me
on Twitter!**

@ConvertingColor