

# Converting Colors

$Yxy(53.7006, 0.3473, 0.3546)$

Have a look what the booklet for  
Yxy(53.7006, 0.3473, 0.3546)  
contains.

<b>Yxy(53.5404, 0.3471, 0.3544)</b> .....	3
<b>Conversions</b> .....	4
<b>Details</b> .....	6
<b>Harmonies</b> .....	12
<b>Previews</b> .....	24
<b>Color Blindness Simulation</b> .....	27
<b>CSS Examples</b> .....	30

# Color

**Yxy(53.5404, 0.3471, 0.3544)**

# Conversions

## Conversions Part 1

<b>Format</b>	<b>Color</b>
Hex	D3BEA9
RGB	211, 190, 169
RGB Percent	83%, 75%, 66%
CMY	0.1725, 0.2549, 0.3373
CMYK	0.00, 0.10, 0.20, 0.17
HSL	30°, 32%, 75%
HSV	30°, 20%, 83%
XYZ	52.4376, 53.5404, 45.0954
YIQ	193.8850, 19.2570, -2.0790

# Conversions

## Conversions Part 2

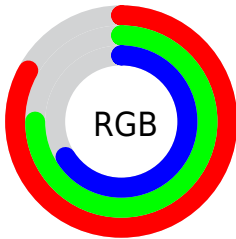
Format	Color
R <sub>Y</sub> B	211, 211, 169
Decimal	13876905
CIE Lab	78.19, 4.08, 13.32
CIE LCh	78, 13.932, 72.978
Yxy	53.5404, 0.3471, 0.3544
Android (android.graphics.Color)	4292066985 (0xFFD3BEA9)
YUV	193.8850, -12.2683, 15.0099
Hunter-Lab	73.1713, -0.1294, 14.6795

# Details

The Yxy color **53.5404, 0.3471, 0.3544** is a light color, and the websafe version is hex **CCCCCC**. A complement of this color would be **49.9518, 0.2815, 0.3022**, and the grayscale version is **53.9432, 0.3127, 0.3290**.

A 20% lighter version of the original color is **92.5534, 0.3320, 0.3506**, and **26.2436, 0.3561, 0.3613** is the 20% darker color. If you saturate the color by 10%, you get **48.4103, 0.3679, 0.3679**, and if you desaturate by 10%, it is **59.1336, 0.3287, 0.3413**.

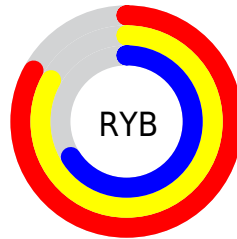
# Distribution



Red (83%)

Green (75%)

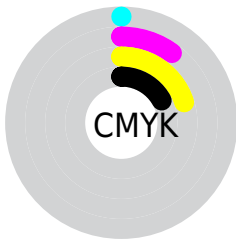
Blue (66%)



Red (83%)

Yellow (83%)

Blue (66%)

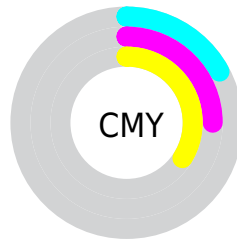


Cyan (0%)

Magenta (10%)

Yellow (20%)

Black (17%)



Cyan (17%)

Magenta (25%)


Yellow (34%)


# Brightness & Saturation Gradients

These gradients show how the Yxy color 53.5404, 0.3471, 0.3544 changes by changing the brightness by 10 percent. The first figure shows a shift by +10% for each color and the second figure -10%.

Similar to the brightness gradients but the following saturation gradients show a change of the Yxy color 53.5404, 0.3471, 0.3544 by changing the saturation by 10% instead.





 53.5404, 0.3471,  
0.3544

 53.5404, 0.3471,  
0.3544

400.3550, 0.3302,  
0.3422

 38.2343, 0.3512,  
0.3573


 95.3991, 0.3411,  
0.3501

 26.1646, 0.3564,  
0.3610

122.7205, 0.3388,  
0.3484

 16.9468, 0.3632,  
0.3657


154.8158, 0.3368,  
0.3470

 10.1966, 0.3725,  
0.3721

192.0695, 0.3351,  
0.3457

 5.5295, 0.3859,  
0.3810

234.8658, 0.3337,  
0.3447

 2.5612, 0.4067,  
0.3942

283.5893, 0.3324,

 0.9072, 0.5010,

0.3437

0.4698

338.6242, 0.3313,  
0.3429

0.0000, 0.0000,  
0.0000

53.5404, 0.3471,  
0.3544

53.5404, 0.3471,  
0.3544

48.4103, 0.3679,  
0.3679

59.1336, 0.3287,  
0.3413

43.7229, 0.3912,  
0.3813

65.1950, 0.3126,  
0.3289

39.4669, 0.4167,  
0.3940

71.7390, 0.2985,  
0.3173

35.6276, 0.4438,  
0.4048

78.7770, 0.2863,  
0.3066

32.1892, 0.4713,  
0.4127

85.0011, 0.2860,  
0.3162

■ 29.1345, 0.4979,  
0.4162

■ 91.4834, 0.2865,  
0.3271

■ 26.4442, 0.5216,  
0.4145

■ 92.5893, 0.2866,  
0.3289

■ 24.0899, 0.5417,  
0.4080

■ 24.0714, 0.5419,  
0.4079

# Harmonies

## Analogous

The Analogous color harmony consists of three colors that are next to each other on the color wheel.



53.5404, 0.3491, 0.3410



53.5404, 0.3471, 0.3544



53.5404, 0.3357, 0.3615

# Triad

The Triadic color harmony groups three colors that are evenly spaced from another and form a triangle on the color wheel.



53.5404, 0.3471, 0.3544



53.5404, 0.2850, 0.3321



53.5404, 0.3063, 0.3007

# Complementary

The Complementary color scheme is a pair of colors which are on the opposite of each other on the color wheel.



53.5404, 0.3471, 0.3544



49.9518, 0.2815, 0.3022

# Split Complementary

Split-complementary colors differ from the complementary color scheme. The scheme consists of three colors, the original color and two neighbors of the complement color.



53.5404, 0.2896, 0.2978



53.5404, 0.3471, 0.3544



53.5404, 0.2776, 0.3153

# Square

The Square scheme is like the rectangle color scheme, but the four colors are evenly spaced on the color wheel.



53.5404, 0.3471, 0.3544



53.5404, 0.2998, 0.3486



53.5404, 0.2793, 0.3029



53.5404, 0.3252, 0.3106



# Rectangle

The Rectangle color scheme consists of four colors that form a rectangle on the color wheel.



53.5404, 0.3471, 0.3544



53.5404, 0.3244, 0.3612



53.5404, 0.2793, 0.3029



53.5404, 0.3003, 0.2989

# Sweetspot

The Sweet Spot groups the original color and five complimentary colors.



53.5428, 0.3471, 0.3544



94.2728, 0.3222, 0.3364



45.9345, 0.3330, 0.3038



20.0483, 0.3233, 0.3373



0.0000, 0.0000, 0.0000



21.4041, 0.3127, 0.3290



# Same Dimension

The Same Dimension uses a secret algorithm to generate beautiful new colors.



53.5428, 0.3471, 0.3544



78.6853, 0.3558, 0.3602



63.3028, 0.3425, 0.3783



12.7716, 0.3278, 0.3407



14.7318, 0.5396, 0.4098



0.9824, 0.5117, 0.4319



# Inverse Universe

The Inverse Universe completely reimagines the original color for something new.



49.9518, 0.2815, 0.3022



72.1768, 0.2744, 0.2956



41.5039, 0.2797, 0.2745



12.3796, 0.2982, 0.3171



9.1923, 0.1775, 0.1588

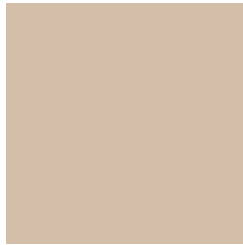


0.6727, 0.1867, 0.1921



# Previews

## White Background



This preview shows how the Yxy color 53.5404, 0.3471, 0.3544 looks on a white background.

## Color Contrast Check

Large Text (above 18pt) WCAG AA × Fail

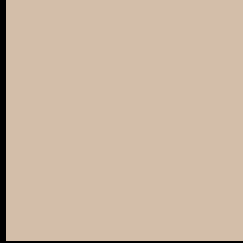
Any Text WCAG AA × Fail

Large Text (above 18pt) WCAG AAA × Fail

Any Text WCAG AAA × Fail



# Black Background



This preview shows how the Yxy color 53.5404, 0.3471, 0.3544 looks on a black background.

## Color Contrast Check

Large Text (above 18pt) WCAG AA ✓ Pass

Any Text WCAG AA ✓ Pass

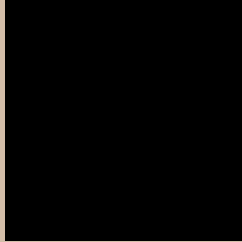
Large Text (above 18pt) WCAG AAA ✓ Pass

Any Text WCAG AAA ✓ Pass

If you want to check with other color combinations, try the [Color Contrast Checker](#).

**Yxy 53.5404, 0.3471, 0.3544**

## **Background**



This preview shows how black text looks on a background with the Yxy color 53.5404, 0.3471, 0.3544.



This preview shows how white text looks on a background with the Yxy color 53.5404, 0.3471, 0.3544.

# Color Blindness Simulation

Color vision deficiency is a very complex topic, and I could not describe the different causes any better than Wikipedia does, so if you want to learn more, you should check out their [article about color blindness](#).

## Dichromacy



### Original Color

53.5404, 0.3471, 0.3544

### Protanopia

53.5988, 0.3379, 0.3574

### Deuteranopia

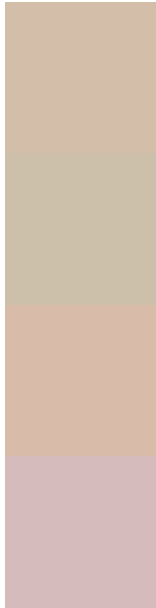
53.3922, 0.3560, 0.3479



## Tritanopia

53.7350, 0.3260, 0.3128

# Trichromacy



## Original Color

53.5404, 0.3471, 0.3544

## Protanomaly

53.5807, 0.3407, 0.3559

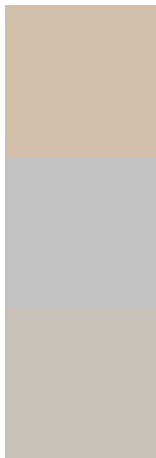
## Deuteranomaly

53.1946, 0.3522, 0.3493

## Tritanomaly

53.5109, 0.3339, 0.3267

# Monochromacy



## Original Color

53.5404, 0.3471, 0.3544

## Achromatopsia

53.9479, 0.3127, 0.3290

## Achromatomaly

53.9221, 0.3245, 0.3388

# CSS Examples

## Text

The CSS property to change the color of the text to Yxy 53.5404, 0.3471, 0.3544 is called "color". The color property can be set on classes, ids or directly on the HTML element.

This example shows how text in the color `rgb(211, 190, 169)` looks like.

```
.text, #text, p{  
    color:rgb(211, 190, 169)  
}
```

If you want to add a text shadow in that color use the text-shadow property, you can generate a text shadow directly with our [CSS Text Shadow Generator](#).

Here you see how black text with a 4 pixel rgb(211, 190, 169) colored shadow looks like.

```
.shadow{ text-shadow: 4px 4px 2px rgb(211, 190, 169) }
```

## Border

The CSS property to change the border of an element to Yxy 53.5404, 0.3471, 0.3544 is called "border". The border property can be set on classes, ids or directly on the HTML element.

This example shows the color as border, it can be applied via the CSS property "border" or "border-color".

```
.border, #border, table{ border:4px solid rgb(211, 190, 169) }
```

If only the border color should be changed use the property `border-color`.

```
.border{ border-color:rgb(211, 190, 169) }
```

If you want to add a box shadow in that color use:

Here you see how a box with a 4 pixel `rgb(211, 190, 169)` colored shadow looks like.

```
.boxshadow{ -moz-box-shadow:4px 4px 4px  
4px rgb(211, 190, 169); -webkit-box-  
shadow:4px 4px 4px 4px rgb(211, 190, 169);  
box-shadow:4px 4px 4px 4px rgb(211, 190,  
169) }
```



# Background

The CSS property to change the background color of an element to Yxy 53.5404, 0.3471, 0.3544 is called "background". The background property can be set on classes, ids or directly on the HTML element.

```
.background, #background, body{  
background: rgb(211, 190, 169) }
```

If only the background color should be changed can be used:

```
.background{ background-color: rgb(211,  
190, 169) }
```

This example shows the color as background, it is applied via the CSS property "background".

To optimize and compress your CSS code, you can use our [online CSS compressor and optimizer](#) based on csstidy. If you want to create a linear or radial gradient as background or border, check our [CSS Gradient Generator](#).

Hey! You found this booklet interesting? Support Converting Colors with the new Membership Option!

The pro membership hides all ads, plus gives you double the colors in the color bucket, and more awesome pro features!

**[Learn more, Memberships starting at \\$2.50/m!](#)**

**Follow me  
on Twitter!**

@ConvertingColor