

Converting Colors

Yxy(53.7826, 0.3570, 0.3400)

Have a look what the booklet for
Yxy(53.7826, 0.3570, 0.3400)
contains.

Yxy(53.5449, 0.3566, 0.3395)	3
Conversions	4
Details	6
Harmonies	12
Previews	24
Color Blindness Simulation	27
CSS Examples	30

Color

Yxy(53.5449, 0.3566, 0.3395)

Conversions

Conversions Part 1

Format	Color
Hex	E2B8AF
RGB	226, 184, 175
RGB Percent	89%, 72%, 69%
CMY	0.1137, 0.2784, 0.3137
CMYK	0.00, 0.19, 0.23, 0.11
HSL	11°, 47%, 79%
HSV	11°, 23%, 89%
XYZ	56.2419, 53.5449, 47.9302
YIQ	195.5320, 27.9210, 6.1050

Conversions

Conversions Part 2

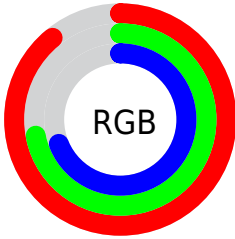
Format	Color
R _Y B	226, 186, 175
Decimal	14858415
CIE Lab	78.20, 13.75, 10.27
CIE LCh	78, 17.162, 36.737
Yxy	53.5449, 0.3566, 0.3395
Android (android.graphics.Color)	4293048495 (0xFFE2B8AF)
YUV	195.5320, -10.1223, 26.7204
Hunter-Lab	73.1744, 9.1400, 12.3863

Details

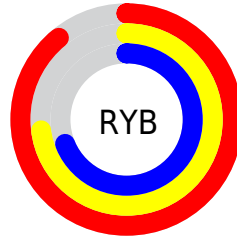
The Yxy color **53.5449, 0.3566, 0.3395** is a light color, and the websafe version is hex **FFCCCC**. A complement of this color would be **64.2286, 0.2785, 0.3182**, and the grayscale version is **54.9577, 0.3127, 0.3290**.

A 20% lighter version of the original color is **89.3497, 0.3283, 0.3379**, and **26.2087, 0.3682, 0.3413** is the 20% darker color. If you saturate the color by 10%, you get **45.5021, 0.3830, 0.3445**, and if you desaturate by 10%, it is **62.7583, 0.3348, 0.3347**.

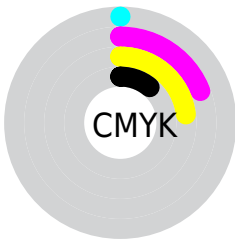
Distribution



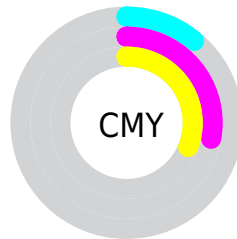
- Red (89%)
- Green (72%)
- Blue (69%)



- Red (89%)
- Yellow (73%)
- Blue (69%)



- Cyan (0%)
- Magenta (19%)
- Yellow (23%)
- Black (11%)




- Cyan (11%)
- Magenta (28%)
- Yellow (31%)

Brightness & Saturation Gradients


These gradients show how the Yxy color 53.5449, 0.3566, 0.3395 changes by changing the brightness by 10 percent. The first figure shows a shift by +10% for each color and the second figure -10%.


Similar to the brightness gradients but the following saturation gradients show a change of the Yxy color 53.5449, 0.3566, 0.3395 by changing the saturation by 10% instead.


 53.5449, 0.3566,
0.3395

 53.5449, 0.3566,
0.3395


400.3722, 0.3350,
0.3347

 38.2379, 0.3619,
0.3405


 95.4057, 0.3488,
0.3379

 26.1674, 0.3686,
0.3418

122.7283, 0.3459,
0.3372

 16.9489, 0.3775,
0.3434


154.8250, 0.3434,
0.3367

 10.1981, 0.3896,
0.3453

192.0800, 0.3412,
0.3362

 5.5305, 0.4072,
0.3476

234.8779, 0.3394,
0.3358

 2.5618, 0.4350,
0.3502

283.6029, 0.3377,

 0.9075, 0.5150,

0.3354

0.3737

338.6396, 0.3363,
0.3351

0.0000, 1.0000,
0.0000

0.0000, 0.0000,
0.0000

53.5449, 0.3566,
0.3395

53.5449, 0.3566,
0.3395

45.5021, 0.3830,
0.3445

62.7583, 0.3348,
0.3347

38.5758, 0.4145,
0.3493

73.1792, 0.3168,
0.3301

32.7185, 0.4512,
0.3534

84.8517, 0.3020,
0.3259

27.8764, 0.4922,
0.3562

94.9083, 0.2952,
0.3289

■ 23.9908, 0.5348,
0.3567

■ 20.9971, 0.5748,
0.3542

■ 18.8219, 0.6066,
0.3484

■ 17.6788, 0.6235,
0.3432

Harmonies

Analogous

The Analogous color harmony consists of three colors that are next to each other on the color wheel.



53.5449, 0.3442, 0.3201



53.5449, 0.3566, 0.3395



53.5449, 0.3567, 0.3571

Triad

The Triadic color harmony groups three colors that are evenly spaced from another and form a triangle on the color wheel.



53.5449, 0.3566, 0.3395



53.5449, 0.3012, 0.3569



53.5449, 0.2810, 0.2912

Complementary

The Complementary color scheme is a pair of colors which are on the opposite of each other on the color wheel.



53.5449, 0.3566, 0.3395



64.2286, 0.2785, 0.3182

Split Complementary

Split-complementary colors differ from the complementary color scheme. The scheme consists of three colors, the original color and two neighbors of the complement color.



53.5449, 0.2704, 0.2993



53.5449, 0.3566, 0.3395



53.5449, 0.2818, 0.3372

Square

The Square scheme is like the rectangle color scheme, but the four colors are evenly spaced on the color wheel.



53.5449, 0.3566, 0.3395



53.5449, 0.3242, 0.3683



53.5449, 0.2707, 0.3159



53.5449, 0.3001, 0.2929

Rectangle

The Rectangle color scheme consists of four colors that form a rectangle on the color wheel.



53.5449, 0.3566, 0.3395



53.5449, 0.3498, 0.3654



53.5449, 0.2707, 0.3159



53.5449, 0.2763, 0.2929

Sweetspot

The Sweet Spot groups the original color and five complimentary colors.



53.5473, 0.3566, 0.3395



89.8808, 0.3244, 0.3321



51.8658, 0.3222, 0.2818



19.0596, 0.3255, 0.3324



0.0000, 0.0000, 0.0000



21.4041, 0.3127, 0.3290

Same Dimension

The Same Dimension uses a secret algorithm to generate beautiful new colors.



53.5473, 0.3566, 0.3395



65.3390, 0.3682, 0.3418



64.8643, 0.3506, 0.3673



14.0898, 0.3288, 0.3332



10.2074, 0.6212, 0.3449



0.8250, 0.5932, 0.3672

Inverse Universe

The Inverse Universe completely reimagines the original color for something new.



64.2286, 0.2785, 0.3182



81.6868, 0.2719, 0.3158



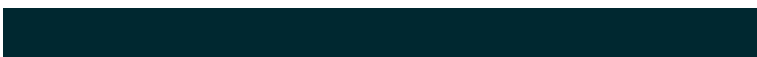
52.3056, 0.2762, 0.2875



15.1391, 0.2982, 0.3248



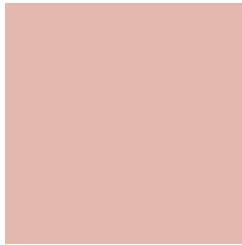
23.3495, 0.2088, 0.2718



1.7278, 0.2116, 0.2816

Previews

White Background



This preview shows how the Yxy color 53.5449, 0.3566, 0.3395 looks on a white background.

Color Contrast Check

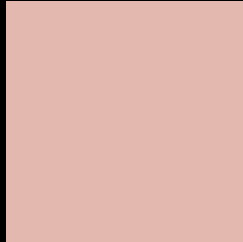
Large Text (above 18pt) WCAG AA × Fail

Any Text WCAG AA × Fail

Large Text (above 18pt) WCAG AAA × Fail

Any Text WCAG AAA × Fail

Black Background



This preview shows how the Yxy color 53.5449, 0.3566, 0.3395 looks on a black background.

Color Contrast Check

Large Text (above 18pt) WCAG AA ✓ Pass

Any Text WCAG AA ✓ Pass

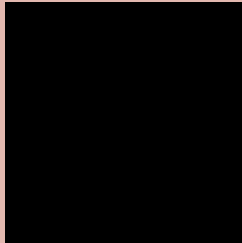
Large Text (above 18pt) WCAG AAA ✓ Pass

Any Text WCAG AAA ✓ Pass

If you want to check with other color combinations, try the [Color Contrast Checker](#).

Yxy 53.5449, 0.3566, 0.3395

Background



This preview shows how black text looks on a background with the Yxy color 53.5449, 0.3566, 0.3395.



This preview shows how white text looks on a background with the Yxy color 53.5449, 0.3566, 0.3395.

Color Blindness Simulation

Color vision deficiency is a very complex topic, and I could not describe the different causes any better than Wikipedia does, so if you want to learn more, you should check out their [article about color blindness](#).

Dichromacy



Original Color

53.5449, 0.3566, 0.3395

Protanopia

53.7146, 0.3284, 0.3450

Deuteranopia

53.6567, 0.3506, 0.3444



Tritanopia

53.4819, 0.3419, 0.3133

Trichromacy



Original Color

53.5449, 0.3566, 0.3395

Protanomaly

53.5966, 0.3380, 0.3435

Deuteranomaly

53.7034, 0.3535, 0.3431

Tritanomaly

53.4176, 0.3468, 0.3223

Monochromacy



Original Color

53.5449, 0.3566, 0.3395

Achromatopsia

55.2011, 0.3127, 0.3290

Achromatomaly

54.5955, 0.3281, 0.3338

CSS Examples

Text

The CSS property to change the color of the text to Yxy 53.5449, 0.3566, 0.3395 is called "color". The color property can be set on classes, ids or directly on the HTML element.

This example shows how text in the color `rgb(226, 184, 175)` looks like.

```
.text, #text, p{  
    color:rgb(226, 184, 175)  
}
```

If you want to add a text shadow in that color use the text-shadow property, you can generate a text shadow directly with our [CSS Text Shadow Generator](#).

Here you see how black text with a 4 pixel rgb(226, 184, 175) colored shadow looks like.

```
.shadow{ text-shadow: 4px 4px 2px rgb(226, 184, 175) }
```

Border

The CSS property to change the border of an element to Yxy 53.5449, 0.3566, 0.3395 is called "border". The border property can be set on classes, ids or directly on the HTML element.

This example shows the color as border, it can be applied via the CSS property "border" or "border-color".

```
.border, #border, table{ border:4px solid rgb(226, 184, 175) }
```

If only the border color should be changed use the property border-color.

```
.border{ border-color:rgb(226, 184, 175) }
```

If you want to add a box shadow in that color use:

Here you see how a box with a 4 pixel rgb(226, 184, 175) colored shadow looks like.

```
.boxshadow{ -moz-box-shadow:4px 4px 4px  
4px rgb(226, 184, 175); -webkit-box-  
shadow:4px 4px 4px 4px rgb(226, 184, 175);  
box-shadow:4px 4px 4px 4px rgb(226, 184,  
175) }
```


Background

The CSS property to change the background color of an element to Yxy 53.5449, 0.3566, 0.3395 is called "background". The background property can be set on classes, ids or directly on the HTML element.

```
.background, #background, body{  
background: rgb(226, 184, 175) }
```

If only the background color should be changed can be used:

```
.background{ background-color: rgb(226,  
184, 175) }
```

This example shows the color as background, it is applied via the CSS property "background".

To optimize and compress your CSS code, you can use our [online CSS compressor and optimizer](#) based on csstidy. If you want to create a linear or radial gradient as background or border, check our [CSS Gradient Generator](#).

Hey! You found this booklet interesting? Support Converting Colors with the new Membership Option!

The pro membership hides all ads, plus gives you double the colors in the color bucket, and more awesome pro features!

[Learn more, Memberships starting at \\$2.50/m!](#)

**Follow me
on Twitter!**

@ConvertingColor