

# Converting Colors

$Yxy(53.8768, 0.3444, 0.3478)$

Have a look what the booklet for  
Yxy(53.8768, 0.3444, 0.3478)  
contains.

<b>Yxy(54.0290, 0.3447, 0.3482)</b> .....	3
<b>Conversions</b> .....	4
<b>Details</b> .....	6
<b>Harmonies</b> .....	12
<b>Previews</b> .....	24
<b>Color Blindness Simulation</b> .....	27
<b>CSS Examples</b> .....	30

# Color

**Yxy(54.0290, 0.3447, 0.3482)**

# Conversions

## Conversions Part 1

Format	Color
Hex	D5BEAE
RGB	213, 190, 174
RGB Percent	84%, 75%, 68%
CMY	0.1648, 0.2548, 0.3177
CMYK	0.00, 0.11, 0.18, 0.16
HSL	25°, 32%, 76%
HSV	25°, 18%, 84%
XYZ	53.4859, 54.0290, 47.6517
YIQ	195.0530, 18.8440, -0.1000

# Conversions

## Conversions Part 2

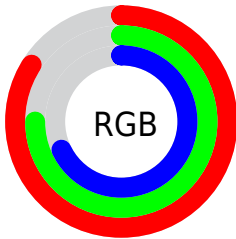
Format	Color
RYB	213, 201, 174
Decimal	14007982
CIELab	78.48, 5.56, 11.05
CIELCh	78, 12.369, 63.279
Yxy	54.0290, 0.3447, 0.3482
Android (android.graphics.Color)	4292198062 (0xFFD5BEAE)
YUV	195.0530, -10.3791, 15.7395
Hunter-Lab	73.5044, 1.2538, 13.0164

# Details

The Yxy color **54.0290, 0.3447, 0.3482** is a light color, and the websafe version is hex **CCCCCC**. A complement of this color would be **53.7075, 0.2843, 0.3090**, and the grayscale version is **54.6600, 0.3127, 0.3290**.

A 20% lighter version of the original color is **92.8287, 0.3289, 0.3457**, and **26.5656, 0.3529, 0.3530** is the 20% darker color. If you saturate the color by 10%, you get **48.0640, 0.3662, 0.3594**, and if you desaturate by 10%, it is **60.5980, 0.3261, 0.3374**.

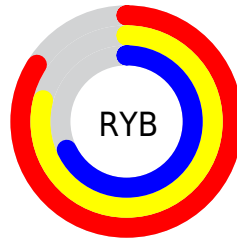
# Distribution



Red (84%)

Green (75%)

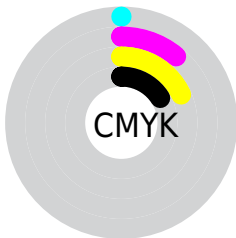
Blue (68%)



Red (84%)

Yellow (79%)

Blue (68%)

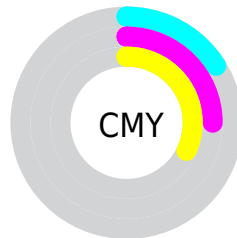


Cyan (0%)

Magenta (11%)

Yellow (18%)

Black (16%)



Cyan (16%)

Magenta (25%)


Yellow (32%)


# Brightness & Saturation Gradients

These gradients show how the Yxy color 54.0290, 0.3447, 0.3482 changes by changing the brightness by 10 percent. The first figure shows a shift by +10% for each color and the second figure -10%.


Similar to the brightness gradients but the following saturation gradients show a change of the Yxy color 54.0290, 0.3447, 0.3482 by changing the saturation by 10% instead.





 54.0290, 0.3447,  
0.3482

 54.0290, 0.3447,  
0.3482


402.2206, 0.3290,  
0.3390

 38.6248, 0.3485,  
0.3504


 96.1168, 0.3391,  
0.3449

 26.4680, 0.3534,  
0.3531


123.5693, 0.3369,  
0.3437

 17.1741, 0.3597,  
0.3566


155.8066, 0.3351,  
0.3426

 10.3587, 0.3684,  
0.3613

193.2133, 0.3336,  
0.3417

 5.6374, 0.3810,  
0.3679

236.1736, 0.3322,  
0.3409

 2.6259, 0.4006,  
0.3775

285.0720, 0.3310,

 0.9397, 0.4670,

0.3402

0.4212

340.2929, 0.3300,  
0.3396

0.0000, 0.0000,  
0.0000

54.0290, 0.3447,  
0.3482

54.0290, 0.3447,  
0.3482

48.0640, 0.3662,  
0.3594

60.5980, 0.3261,  
0.3374

42.6779, 0.3907,  
0.3706

67.7808, 0.3102,  
0.3273

37.8542, 0.4184,  
0.3812

75.5962, 0.2965,  
0.3179

33.5728, 0.4486,  
0.3903

83.7876, 0.2870,  
0.3136

29.8124, 0.4803,  
0.3967

91.4358, 0.2876,  
0.3266

■ 26.5497, 0.5116,  
0.3991

■ 92.8809, 0.2877,  
0.3289

■ 23.7593, 0.5403,  
0.3964

■ 21.4093, 0.5642,  
0.3886

■ 21.0479, 0.5681,  
0.3871

# Harmonies

## Analogous

The Analogous color harmony consists of three colors that are next to each other on the color wheel.



54.0290, 0.3435, 0.3352



54.0290, 0.3447, 0.3482



54.0290, 0.3371, 0.3565

# Triad

The Triadic color harmony groups three colors that are evenly spaced from another and form a triangle on the color wheel.



54.0290, 0.3447, 0.3482



54.0290, 0.2918, 0.3367



54.0290, 0.3019, 0.3023

# Complementary

The Complementary color scheme is a pair of colors which are on the opposite of each other on the color wheel.



54.0290, 0.3447, 0.3482



53.7075, 0.2843, 0.3090

# Split Complementary

Split-complementary colors differ from the complementary color scheme. The scheme consists of three colors, the original color and two neighbors of the complement color.



54.0290, 0.2886, 0.3020



54.0290, 0.3447, 0.3482



54.0290, 0.2829, 0.3215

# Square

The Square scheme is like the rectangle color scheme, but the four colors are evenly spaced on the color wheel.



54.0290, 0.3447, 0.3482



54.0290, 0.3064, 0.3501



54.0290, 0.2817, 0.3089



54.0290, 0.3185, 0.3092



# Rectangle

The Rectangle color scheme consists of four colors that form a rectangle on the color wheel.



54.0290, 0.3447, 0.3482



54.0290, 0.3282, 0.3580



54.0290, 0.2817, 0.3089



54.0290, 0.2969, 0.3014

# Sweetspot

The Sweet Spot groups the original color and five complimentary colors.



54.0314, 0.3447, 0.3482



94.5087, 0.3207, 0.3341



48.4603, 0.3277, 0.3014



20.0677, 0.3218, 0.3348



0.0000, 0.0000, 0.0000



21.4041, 0.3127, 0.3290

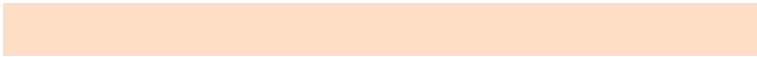


# Same Dimension

The Same Dimension uses a secret algorithm to generate beautiful new colors.



54.0314, 0.3447, 0.3482



77.6027, 0.3528, 0.3526



62.8310, 0.3408, 0.3699



13.2510, 0.3281, 0.3386



13.0518, 0.5655, 0.3892



0.9481, 0.5345, 0.4138

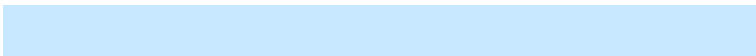


# Inverse Universe

The Inverse Universe completely reimagines the original color for something new.



53.7075, 0.2843, 0.3090



77.0252, 0.2781, 0.3042



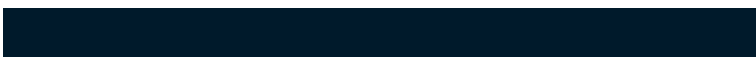
45.5991, 0.2830, 0.2845



13.2119, 0.2982, 0.3192



12.1659, 0.1859, 0.1892



0.8950, 0.1933, 0.2159



# Previews

## White Background



This preview shows how the Yxy color 54.0290, 0.3447, 0.3482 looks on a white background.

## Color Contrast Check

Large Text (above 18pt) WCAG AA × Fail

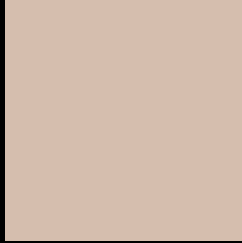
Any Text WCAG AA × Fail

Large Text (above 18pt) WCAG AAA × Fail

Any Text WCAG AAA × Fail



# Black Background



This preview shows how the Yxy color 54.0290, 0.3447, 0.3482 looks on a black background.

## Color Contrast Check

Large Text (above 18pt) WCAG AA ✓ Pass

Any Text WCAG AA ✓ Pass

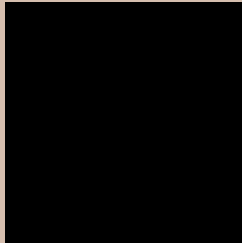
Large Text (above 18pt) WCAG AAA ✓ Pass

Any Text WCAG AAA ✓ Pass

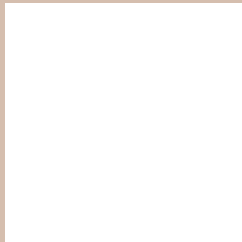
If you want to check with other color combinations, try the [Color Contrast Checker](#).

**Yxy 54.0290, 0.3447, 0.3482**

## **Background**



This preview shows how black text looks on a background with the Yxy color 54.0290, 0.3447, 0.3482.



This preview shows how white text looks on a background with the Yxy color 54.0290, 0.3447, 0.3482.

# Color Blindness Simulation

Color vision deficiency is a very complex topic, and I could not describe the different causes any better than Wikipedia does, so if you want to learn more, you should check out their [article about color blindness](#).

## Dichromacy



### Original Color

54.0290, 0.3447, 0.3482

### Protanopia

54.2747, 0.3330, 0.3511

### Deuteranopia

53.8514, 0.3506, 0.3432



## Tritanopia

53.9338, 0.3260, 0.3117

# Trichromacy



## Original Color

54.0290, 0.3447, 0.3482

## Protanomaly

54.3569, 0.3374, 0.3509

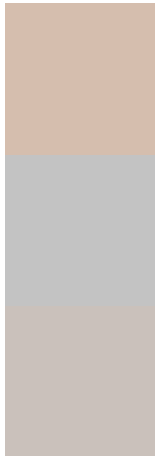
## Deuteranomaly

53.8133, 0.3478, 0.3444

## Tritanomaly

53.7493, 0.3331, 0.3244

# Monochromacy



## Original Color

54.0290, 0.3447, 0.3482

## Achromatopsia

54.5724, 0.3127, 0.3290

## Achromatomaly

54.2843, 0.3246, 0.3363

# CSS Examples

## Text

The CSS property to change the color of the text to Yxy 54.0290, 0.3447, 0.3482 is called "color". The color property can be set on classes, ids or directly on the HTML element.

This example shows how text in the color `rgb(213, 190, 174)` looks like.

```
.text, #text, p{  
    color:rgb(213, 190, 174)  
}
```

If you want to add a text shadow in that color use the text-shadow property, you can generate a text shadow directly with our [CSS Text Shadow Generator](#).

Here you see how black text with a 4 pixel rgb(213, 190, 174) colored shadow looks like.

```
.shadow{ text-shadow: 4px 4px 2px rgb(213, 190, 174) }
```

## Border

The CSS property to change the border of an element to Yxy 54.0290, 0.3447, 0.3482 is called "border". The border property can be set on classes, ids or directly on the HTML element.

This example shows the color as border, it can be applied via the CSS property "border" or "border-color".

```
.border, #border, table{ border:4px solid rgb(213, 190, 174) }
```

If only the border color should be changed use the property border-color.

```
.border{ border-color:rgb(213, 190, 174) }
```

If you want to add a box shadow in that color use:

Here you see how a box with a 4 pixel rgb(213, 190, 174) colored shadow looks like.

```
.boxshadow{ -moz-box-shadow:4px 4px 4px  
4px rgb(213, 190, 174); -webkit-box-  
shadow:4px 4px 4px 4px rgb(213, 190, 174);  
box-shadow:4px 4px 4px 4px rgb(213, 190,  
174) }
```



# Background

The CSS property to change the background color of an element to Yxy 54.0290, 0.3447, 0.3482 is called "background". The background property can be set on classes, ids or directly on the HTML element.

```
.background, #background, body{  
background: rgb(213, 190, 174) }
```

If only the background color should be changed can be used:

```
.background{ background-color: rgb(213,  
190, 174) }
```

This example shows the color as background, it is applied via the CSS property "background".

To optimize and compress your CSS code, you can use our [online CSS compressor and optimizer](#) based on csstidy. If you want to create a linear or radial gradient as background or border, check our [CSS Gradient Generator](#).

Hey! You found this booklet interesting? Support Converting Colors with the new Membership Option!

The pro membership hides all ads, plus gives you double the colors in the color bucket, and more awesome pro features!

**[Learn more, Memberships starting at \\$2.50/m!](#)**

**Follow me  
on Twitter!**

@ConvertingColor