

Converting Colors

$Yxy(54.0953, 0.3539, 0.3398)$

Have a look what the booklet for
Yxy(54.0953, 0.3539, 0.3398)
contains.

Yxy(54.2600, 0.3544, 0.3407)	3
Conversions	4
Details	6
Harmonies	12
Previews	24
Color Blindness Simulation	27
CSS Examples	30

Color

Yxy(54.2600, 0.3544, 0.3407)

Conversions

Conversions Part 1

Format	Color
Hex	E1BAB0
RGB	225, 186, 176
RGB Percent	88%, 73%, 69%
CMY	0.1177, 0.2705, 0.3099
CMYK	0.00, 0.17, 0.22, 0.12
HSL	12°, 45%, 79%
HSV	12°, 22%, 88%
XYZ	56.4419, 54.2600, 48.5585
YIQ	196.5210, 26.4540, 5.1580

Conversions

Conversions Part 2

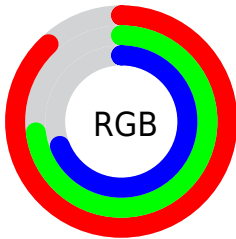
Format	Color
R _Y B	225, 189, 176
Decimal	14793392
CIE Lab	78.61, 12.45, 10.32
CIE LCh	79, 16.174, 39.662
Yxy	54.2600, 0.3544, 0.3407
Android (android.graphics.Color)	4292983472 (0xFFE1BAB0)
YUV	196.5210, -10.1169, 24.9761
Hunter-Lab	73.6614, 7.8654, 12.4783

Details

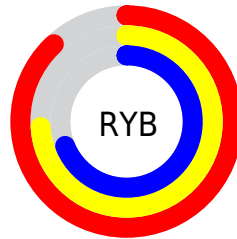
The Yxy color $54.2600, 0.3544, 0.3407$ is a light color, and the websafe version is hex `FFCCCC`. A complement of this color would be $63.2382, 0.2796, 0.3170$, and the grayscale version is $55.5812, 0.3127, 0.3290$.

A 20% lighter version of the original color is $90.5905, 0.3275, 0.3388$, and $26.6653, 0.3650, 0.3429$ is the 20% darker color. If you saturate the color by 10%, you get $46.3717, 0.3800, 0.3465$, and if you desaturate by 10%, it is $63.2447, 0.3331, 0.3351$.

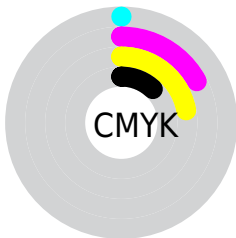
Distribution



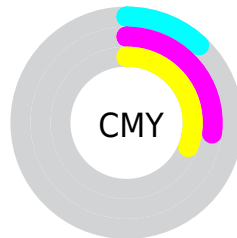
- Red (88%)
- Green (73%)
- Blue (69%)



- Red (88%)
- Yellow (74%)
- Blue (69%)



- Cyan (0%)
- Magenta (17%)
- Yellow (22%)
- Black (12%)





- Cyan (12%)
- Magenta (27%)
- Yellow (31%)

Brightness & Saturation Gradients


These gradients show how the Yxy color 54.2600, 0.3544, 0.3407 changes by changing the brightness by 10 percent. The first figure shows a shift by +10% for each color and the second figure -10%.


Similar to the brightness gradients but the following saturation gradients show a change of the Yxy color 54.2600, 0.3544, 0.3407 by changing the saturation by 10% instead.


 54.2600, 0.3544,
0.3407

 54.2600, 0.3544,
0.3407


403.1007, 0.3339,
0.3353

 38.8096, 0.3594,
0.3419


 96.4559, 0.3470,
0.3389

 26.6116, 0.3657,
0.3434


123.9701, 0.3443,
0.3381

 17.2817, 0.3741,
0.3452


156.2744, 0.3419,
0.3375

 10.4356, 0.3855,
0.3475

193.7532, 0.3399,
0.3370

 5.6887, 0.4020,
0.3504

236.7908, 0.3381,
0.3365

 2.6567, 0.4279,
0.3540

285.7717, 0.3365,

 0.9553, 0.4990,

0.3361

0.3763

341.0802, 0.3351,
0.3357

0.0000, 1.0000,
0.0000

0.0000, 0.0000,
0.0000

54.2600, 0.3544,
0.3407

54.2600, 0.3544,
0.3407

46.3717, 0.3800,
0.3465

63.2447, 0.3331,
0.3351

39.5303, 0.4105,
0.3521

73.3581, 0.3155,
0.3299

33.6936, 0.4458,
0.3570

84.6404, 0.3010,
0.3251

28.8135, 0.4854,
0.3605

94.7458, 0.2946,
0.3289

■ 24.8380, 0.5269,
0.3616

■ 21.7098, 0.5664,
0.3594

■ 19.3647, 0.5990,
0.3535

■ 17.9660, 0.6186,
0.3470

Harmonies

Analogous

The Analogous color harmony consists of three colors that are next to each other on the color wheel.



54.2600, 0.3438, 0.3224



54.2600, 0.3544, 0.3407



54.2600, 0.3533, 0.3568

Triad

The Triadic color harmony groups three colors that are evenly spaced from another and form a triangle on the color wheel.



54.2600, 0.3544, 0.3407



54.2600, 0.2999, 0.3536



54.2600, 0.2843, 0.2933

Complementary

The Complementary color scheme is a pair of colors which are on the opposite of each other on the color wheel.



54.2600, 0.3544, 0.3407



63.2382, 0.2796, 0.3170

Split Complementary

Split-complementary colors differ from the complementary color scheme. The scheme consists of three colors, the original color and two neighbors of the complement color.



54.2600, 0.2735, 0.3000



54.2600, 0.3544, 0.3407



54.2600, 0.2823, 0.3347

Square

The Square scheme is like the rectangle color scheme, but the four colors are evenly spaced on the color wheel.



54.2600, 0.3544, 0.3407



54.2600, 0.3214, 0.3652



54.2600, 0.2728, 0.3150



54.2600, 0.3029, 0.2957

Rectangle

The Rectangle color scheme consists of four colors that form a rectangle on the color wheel.



54.2600, 0.3544, 0.3407



54.2600, 0.3462, 0.3640



54.2600, 0.2728, 0.3150



54.2600, 0.2797, 0.2945

Sweetspot

The Sweet Spot groups the original color and five complimentary colors.



54.2625, 0.3544, 0.3407



90.1789, 0.3244, 0.3326



51.9621, 0.3231, 0.2853



19.1284, 0.3254, 0.3329



0.0000, 0.0000, 0.0000



21.4041, 0.3127, 0.3290

Same Dimension

The Same Dimension uses a secret algorithm to generate beautiful new colors.



54.2625, 0.3544, 0.3407



67.2932, 0.3651, 0.3432



65.3731, 0.3487, 0.3677



14.1530, 0.3287, 0.3339



10.4882, 0.6162, 0.3489



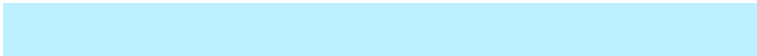
0.8548, 0.5869, 0.3722

Inverse Universe

The Inverse Universe completely reimagines the original color for something new.



63.2382, 0.2796, 0.3170



81.1607, 0.2731, 0.3143



51.7842, 0.2774, 0.2870



15.0706, 0.2982, 0.3241



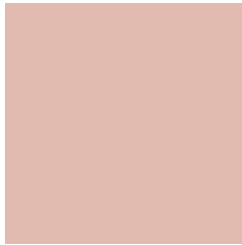
21.8636, 0.2061, 0.2621



1.6373, 0.2093, 0.2735

Previews

White Background



This preview shows how the Yxy color 54.2600, 0.3544, 0.3407 looks on a white background.

Color Contrast Check

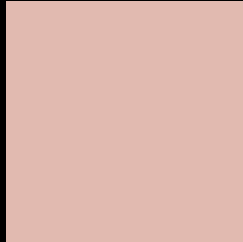
Large Text (above 18pt) WCAG AA × Fail

Any Text WCAG AA × Fail

Large Text (above 18pt) WCAG AAA × Fail

Any Text WCAG AAA × Fail

Black Background



This preview shows how the Yxy color 54.2600, 0.3544, 0.3407 looks on a black background.

Color Contrast Check

Large Text (above 18pt) WCAG AA ✓ Pass

Any Text WCAG AA ✓ Pass

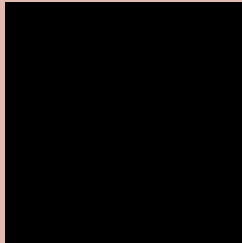
Large Text (above 18pt) WCAG AAA ✓ Pass

Any Text WCAG AAA ✓ Pass

If you want to check with other color combinations, try the [Color Contrast Checker](#).

Yxy 54.2600, 0.3544, 0.3407

Background



This preview shows how black text looks on a background with the Yxy color 54.2600, 0.3544, 0.3407.



This preview shows how white text looks on a background with the Yxy color 54.2600, 0.3544, 0.3407.

Color Blindness Simulation

Color vision deficiency is a very complex topic, and I could not describe the different causes any better than Wikipedia does, so if you want to learn more, you should check out their [article about color blindness](#).

Dichromacy



Original Color

54.2600, 0.3544, 0.3407

Protanopia

54.4354, 0.3299, 0.3461

Deuteranopia

54.4732, 0.3504, 0.3431



Tritanopia

54.3922, 0.3399, 0.3133

Trichromacy



Original Color

54.2600, 0.3544, 0.3407

Protanomaly

54.2179, 0.3379, 0.3434

Deuteranomaly

54.2048, 0.3515, 0.3419

Tritanomaly

54.2860, 0.3456, 0.3234

Monochromacy



Original Color

54.2600, 0.3544, 0.3407

Achromatopsia

55.8340, 0.3127, 0.3290

Achromatomaly

55.0794, 0.3272, 0.3338

CSS Examples

Text

The CSS property to change the color of the text to Yxy 54.2600, 0.3544, 0.3407 is called "color". The color property can be set on classes, ids or directly on the HTML element.

This example shows how text in the color `rgb(225, 186, 176)` looks like.

```
.text, #text, p{  
    color:rgb(225, 186, 176)  
}
```

If you want to add a text shadow in that color use the text-shadow property, you can generate a text shadow directly with our [CSS Text Shadow Generator](#).

Here you see how black text with a 4 pixel rgb(225, 186, 176) colored shadow looks like.

```
.shadow{ text-shadow: 4px 4px 2px rgb(225, 186, 176) }
```

Border

The CSS property to change the border of an element to Yxy 54.2600, 0.3544, 0.3407 is called "border". The border property can be set on classes, ids or directly on the HTML element.

This example shows the color as border, it can be applied via the CSS property "border" or "border-color".

```
.border, #border, table{ border:4px solid rgb(225, 186, 176) }
```

If only the border color should be changed use the property border-color.

```
.border{ border-color:rgb(225, 186, 176) }
```

If you want to add a box shadow in that color use:

Here you see how a box with a 4 pixel rgb(225, 186, 176) colored shadow looks like.

```
.boxshadow{ -moz-box-shadow:4px 4px 4px  
4px rgb(225, 186, 176); -webkit-box-  
shadow:4px 4px 4px 4px rgb(225, 186, 176);  
box-shadow:4px 4px 4px 4px rgb(225, 186,  
176) }
```


Background

The CSS property to change the background color of an element to Yxy 54.2600, 0.3544, 0.3407 is called "background". The background property can be set on classes, ids or directly on the HTML element.

```
.background, #background, body{  
background: rgb(225, 186, 176) }
```

If only the background color should be changed can be used:

```
.background{ background-color: rgb(225,  
186, 176) }
```

This example shows the color as background, it is applied via the CSS property "background".

To optimize and compress your CSS code, you can use our [online CSS compressor and optimizer](#) based on csstidy. If you want to create a linear or radial gradient as background or border, check our [CSS Gradient Generator](#).

Hey! You found this booklet interesting? Support Converting Colors with the new Membership Option!

The pro membership hides all ads, plus gives you double the colors in the color bucket, and more awesome pro features!

[Learn more, Memberships starting at \\$2.50/m!](#)

**Follow me
on Twitter!**

@ConvertingColor