

# Converting Colors

Yxy(54.1336, 0.3555, 0.3438)

Have a look what the booklet for  
Yxy(54.1336, 0.3555, 0.3438)  
contains.

<b>Yxy(54.0211, 0.3552, 0.3430)</b> .....	3
<b><i>Conversions</i></b> .....	4
<b><i>Details</i></b> .....	6
<b><i>Harmonies</i></b> .....	12
<b><i>Previews</i></b> .....	24
<b><i>Color Blindness Simulation</i></b> .....	27
<b><i>CSS Examples</i></b> .....	30

# Color

**Yxy(54.0211, 0.3552, 0.3430)**

# Conversions

## Conversions Part 1

Format	Color
Hex	E0BAAE
RGB	224, 186, 174
RGB Percent	88%, 73%, 68%
CMY	0.1215, 0.2706, 0.3176
CMYK	0.00, 0.17, 0.22, 0.12
HSL	14°, 45%, 78%
HSV	14°, 22%, 88%
XYZ	55.9426, 54.0211, 47.5323
YIQ	195.9940, 26.5000, 4.3240

# Conversions

## Conversions Part 2

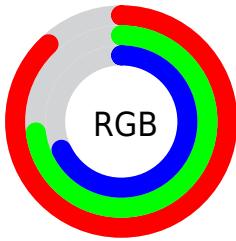
Format	Color
R <sub>Y</sub> B	224, 190, 174
Decimal	14727854
CIE Lab	78.47, 11.81, 11.17
CIE LCh	78, 16.252, 43.404
Yxy	54.0211, 0.3552, 0.3430
Android (android.graphics.Color)	4292917934 (0xFFE0BAAE)
YUV	195.9940, -10.8430, 24.5613
Hunter-Lab	73.4990, 7.2389, 13.1061

# Details

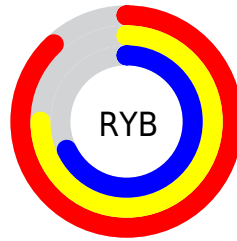
The Yxy color **54.0211, 0.3552, 0.3430** is a light color, and the websafe version is hex **FFCCCC**. A complement of this color would be **61.4835, 0.2786, 0.3145**, and the grayscale version is **55.2549, 0.3127, 0.3290**.

A 20% lighter version of the original color is **90.4214, 0.3294, 0.3418**, and **26.5050, 0.3662, 0.3460** is the 20% darker color. If you saturate the color by 10%, you get **46.4676, 0.3805, 0.3497**, and if you desaturate by 10%, it is **62.5806, 0.3340, 0.3365**.

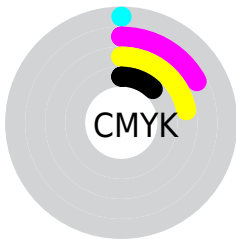
# Distribution



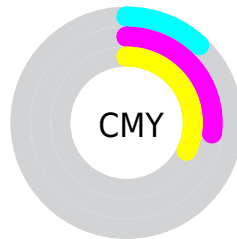
- Red (88%)
- Green (73%)
- Blue (68%)



- Red (88%)
- Yellow (75%)
- Blue (68%)



- Cyan (0%)
- Magenta (17%)
- Yellow (22%)
- Black (12%)




- Cyan (12%)
- Magenta (27%)
- Yellow (32%)


# Brightness & Saturation Gradients

These gradients show how the Yxy color 54.0211, 0.3552, 0.3430 changes by changing the brightness by 10 percent. The first figure shows a shift by +10% for each color and the second figure -10%.


Similar to the brightness gradients but the following saturation gradients show a change of the Yxy color 54.0211, 0.3552, 0.3430 by changing the saturation by 10% instead.





 54.0211, 0.3552,  
0.3430

 54.0211, 0.3552,  
0.3430


402.1905, 0.3343,  
0.3365

 38.6185, 0.3603,  
0.3445


 96.1052, 0.3477,  
0.3408

 26.4631, 0.3668,  
0.3463


123.5556, 0.3449,  
0.3399

 17.1704, 0.3753,  
0.3485


155.7906, 0.3424,  
0.3391

 10.3561, 0.3869,  
0.3514

193.1948, 0.3404,  
0.3385

 5.6357, 0.4038,  
0.3551

236.1525, 0.3386,  
0.3379

 2.6248, 0.4302,  
0.3599

285.0480, 0.3370,

 0.9392, 0.5098,

0.3374

0.3902

340.2659, 0.3356,  
0.3369

0.0000, 1.0000,  
0.0000

0.0000, 0.0000,  
0.0000

54.0211, 0.3552,  
0.3430

54.0211, 0.3552,  
0.3430

46.4676, 0.3805,  
0.3497

62.5806, 0.3340,  
0.3365

39.8756, 0.4104,  
0.3562

72.1739, 0.3164,  
0.3304

34.2079, 0.4449,  
0.3620

82.8368, 0.3017,  
0.3247

29.4224, 0.4832,  
0.3662

94.0334, 0.2940,  
0.3281

■ 25.4733, 0.5232,  
0.3676

■ 94.5886, 0.2940,  
0.3289

■ 22.3105, 0.5613,  
0.3654

■ 19.8778, 0.5932,  
0.3590

■ 18.4583, 0.6118,  
0.3524

# Harmonies

## Analogous

The Analogous color harmony consists of three colors that are next to each other on the color wheel.



54.0211, 0.3459, 0.3246



54.0211, 0.3552, 0.3430



54.0211, 0.3526, 0.3586

# Triad

The Triadic color harmony groups three colors that are evenly spaced from another and form a triangle on the color wheel.



54.0211, 0.3552, 0.3430



54.0211, 0.2973, 0.3516



54.0211, 0.2861, 0.2928

# Complementary

The Complementary color scheme is a pair of colors which are on the opposite of each other on the color wheel.



54.0211, 0.3552, 0.3430



61.4835, 0.2786, 0.3145

# Split Complementary

Split-complementary colors differ from the complementary color scheme. The scheme consists of three colors, the original color and two neighbors of the complement color.



54.0211, 0.2741, 0.2985



54.0211, 0.3552, 0.3430



54.0211, 0.2804, 0.3322

# Square

The Square scheme is like the rectangle color scheme, but the four colors are evenly spaced on the color wheel.



54.0211, 0.3552, 0.3430



54.0211, 0.3188, 0.3645



54.0211, 0.2720, 0.3126



54.0211, 0.3055, 0.2964



# Rectangle

The Rectangle color scheme consists of four colors that form a rectangle on the color wheel.



54.0211, 0.3552, 0.3430



54.0211, 0.3446, 0.3652



54.0211, 0.2720, 0.3126



54.0211, 0.2811, 0.2937

# Sweetspot

The Sweet Spot groups the original color and five complimentary colors.



54.0236, 0.3552, 0.3430



90.5477, 0.3243, 0.3332



50.8991, 0.3248, 0.2859



19.2136, 0.3254, 0.3336



0.0000, 0.0000, 0.0000



21.4041, 0.3127, 0.3290



# Same Dimension

The Same Dimension uses a secret algorithm to generate beautiful new colors.



54.0236, 0.3552, 0.3430



67.3593, 0.3670, 0.3463



65.3340, 0.3493, 0.3705



14.2312, 0.3286, 0.3347



10.8924, 0.6093, 0.3544



0.8930, 0.5792, 0.3783



# Inverse Universe

The Inverse Universe completely reimagines the original color for something new.



61.4835, 0.2786, 0.3145



79.1173, 0.2714, 0.3110



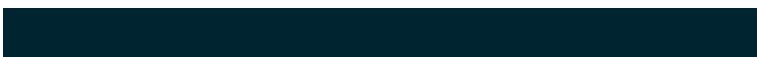
50.0724, 0.2763, 0.2838



14.9864, 0.2982, 0.3232



20.1215, 0.2028, 0.2499

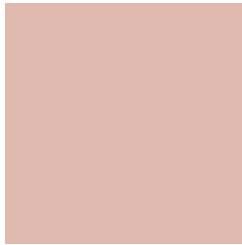


1.5302, 0.2065, 0.2635



# Previews

## White Background



This preview shows how the Yxy color 54.0211, 0.3552, 0.3430 looks on a white background.

## Color Contrast Check

Large Text (above 18pt) WCAG AA × Fail

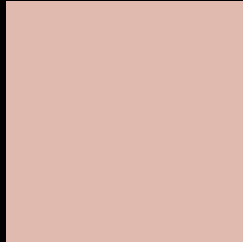
Any Text WCAG AA × Fail

Large Text (above 18pt) WCAG AAA × Fail

Any Text WCAG AAA × Fail



# Black Background



This preview shows how the Yxy color 54.0211, 0.3552, 0.3430 looks on a black background.

## Color Contrast Check

Large Text (above 18pt) WCAG AA ✓ Pass

Any Text WCAG AA ✓ Pass

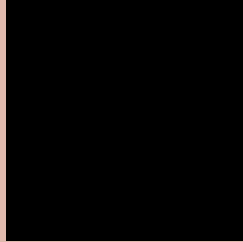
Large Text (above 18pt) WCAG AAA ✓ Pass

Any Text WCAG AAA ✓ Pass

If you want to check with other color combinations, try the [Color Contrast Checker](#).

**Yxy 54.0211, 0.3552, 0.3430**

## Background



This preview shows how black text looks on a background with the Yxy color 54.0211, 0.3552, 0.3430.



This preview shows how white text looks on a background with the Yxy color 54.0211, 0.3552, 0.3430.

# Color Blindness Simulation

Color vision deficiency is a very complex topic, and I could not describe the different causes any better than Wikipedia does, so if you want to learn more, you should check out their [article about color blindness](#).

## Dichromacy



### Original Color

54.0211, 0.3552, 0.3430

### Protanopia

54.3545, 0.3315, 0.3486

### Deuteranopia

53.9688, 0.3523, 0.3443



## Tritanopia

54.2291, 0.3390, 0.3133

# Trichromacy



## Original Color

54.0211, 0.3552, 0.3430

## Protanomaly

54.1376, 0.3395, 0.3459

## Deuteranomaly

54.1262, 0.3532, 0.3443

## Tritanomaly

54.1239, 0.3447, 0.3234

# Monochromacy



## Original Color

54.0211, 0.3552, 0.3430

## Achromatopsia

55.2011, 0.3127, 0.3290

## Achromatomaly

54.4519, 0.3273, 0.3338

# CSS Examples

## Text

The CSS property to change the color of the text to Yxy 54.0211, 0.3552, 0.3430 is called "color". The color property can be set on classes, ids or directly on the HTML element.

This example shows how text in the color `rgb(224, 186, 174)` looks like.

```
.text, #text, p{  
    color:rgb(224, 186, 174)  
}
```

If you want to add a text shadow in that color use the text-shadow property, you can generate a text shadow directly with our [CSS Text Shadow Generator](#).

Here you see how black text with a 4 pixel rgb(224, 186, 174) colored shadow looks like.

```
.shadow{ text-shadow: 4px 4px 2px rgb(224, 186, 174) }
```

## Border

The CSS property to change the border of an element to Yxy 54.0211, 0.3552, 0.3430 is called "border". The border property can be set on classes, ids or directly on the HTML element.

This example shows the color as border, it can be applied via the CSS property "border" or "border-color".

```
.border, #border, table{ border:4px solid rgb(224, 186, 174) }
```

If only the border color should be changed use the property border-color.

```
.border{ border-color:rgb(224, 186, 174) }
```

If you want to add a box shadow in that color use:

Here you see how a box with a 4 pixel rgb(224, 186, 174) colored shadow looks like.

```
.boxshadow{ -moz-box-shadow:4px 4px 4px  
4px rgb(224, 186, 174); -webkit-box-  
shadow:4px 4px 4px 4px rgb(224, 186, 174);  
box-shadow:4px 4px 4px 4px rgb(224, 186,  
174) }
```



# Background

The CSS property to change the background color of an element to Yxy 54.0211, 0.3552, 0.3430 is called "background". The background property can be set on classes, ids or directly on the HTML element.

```
.background, #background, body{  
background: rgb(224, 186, 174) }
```

If only the background color should be changed can be used:

```
.background{ background-color: rgb(224,  
186, 174) }
```

This example shows the color as background, it is applied via the CSS property "background".

To optimize and compress your CSS code, you can use our [online CSS compressor and optimizer](#) based on csstidy. If you want to create a linear or radial gradient as background or border, check our [CSS Gradient Generator](#).

Hey! You found this booklet interesting? Support Converting Colors with the new Membership Option!

The pro membership hides all ads, plus gives you double the colors in the color bucket, and more awesome pro features!

**[Learn more, Memberships starting at \\$2.50/m!](#)**

**Follow me  
on Twitter!**

@ConvertingColor