

Converting Colors

Yxy(54.2142, 0.3372, 0.3266)

Have a look what the booklet for
Yxy(54.2142, 0.3372, 0.3266)
contains.

Yxy(54.1202, 0.3373, 0.3267)	3
Conversions	4
Details	6
Harmonies	12
Previews	24
Color Blindness Simulation	27
CSS Examples	30

Color

Yxy(54.1202, 0.3373, 0.3267)

Conversions

Conversions Part 1

Format	Color
Hex	DABBBB
RGB	218, 187, 189
RGB Percent	85%, 73%, 74%
CMY	0.1450, 0.2667, 0.2587
CMYK	0.00, 0.14, 0.13, 0.15
HSL	356°, 30%, 79%
HSV	356°, 14%, 85%
XYZ	55.8762, 54.1202, 55.6608
YIQ	196.4970, 17.8340, 7.1940

Conversions

Conversions Part 2

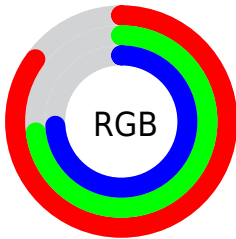
Format	Color
R _Y B	218, 187, 189
Decimal	14334909
CIE Lab	78.53, 11.39, 3.07
CIE LCh	79, 11.799, 15.078
Yxy	54.1202, 0.3373, 0.3267
Android (android.graphics.Color)	4292524989 (0xFFDABBBB)
YUV	196.4970, -3.6960, 18.8581
Hunter-Lab	73.5664, 6.8355, 6.6373

Details

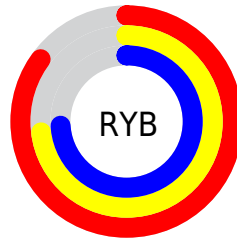
The Yxy color **54.1202, 0.3373, 0.3267** is a light color, and the websafe version is hex **FFCCCC**. A complement of this color would be **65.6757, 0.2924, 0.3313**, and the grayscale version is **55.5339, 0.3127, 0.3290**.

A 20% lighter version of the original color is **91.9538, 0.3193, 0.3271**, and **26.6143, 0.3439, 0.3260** is the 20% darker color. If you saturate the color by 10%, you get **44.7403, 0.3598, 0.3250**, and if you desaturate by 10%, it is **65.0336, 0.3192, 0.3283**.

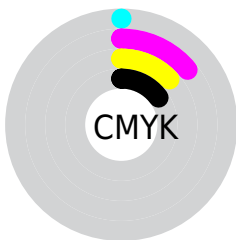
Distribution



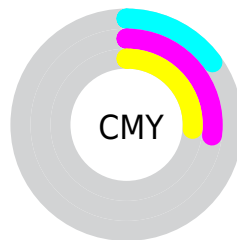
- Red (85%)
- Green (73%)
- Blue (74%)



- Red (85%)
- Yellow (73%)
- Blue (74%)



- Cyan (0%)
- Magenta (14%)
- Yellow (13%)
- Black (15%)




- Cyan (15%)
- Magenta (27%)
- Yellow (26%)

Brightness & Saturation Gradients


These gradients show how the Yxy color 54.1202, 0.3373, 0.3267 changes by changing the brightness by 10 percent. The first figure shows a shift by +10% for each color and the second figure -10%.


Similar to the brightness gradients but the following saturation gradients show a change of the Yxy color 54.1202, 0.3373, 0.3267 by changing the saturation by 10% instead.

 54.1202, 0.3373,
0.3267

 54.1202, 0.3373,
0.3267


402.5682, 0.3253,
0.3279

 38.6978, 0.3402,
0.3264


 96.2507, 0.3330,
0.3272

 26.5247, 0.3440,
0.3260


123.7276, 0.3313,
0.3273

 17.2166, 0.3488,
0.3254


155.9914, 0.3300,
0.3275

 10.3890, 0.3555,
0.3246

193.4265, 0.3288,
0.3276

 5.6576, 0.3653,
0.3233

236.4174, 0.3277,
0.3277

 2.6380, 0.3807,
0.3210

285.3483, 0.3268,

 0.9458, 0.4098,

0.3278

0.3172

340.6038, 0.3260,
0.3279

0.0000, 1.0000,
0.0000

0.0000, 0.0000,
0.0000

54.1202, 0.3373,
0.3267

54.1202, 0.3373,
0.3267

44.7403, 0.3598,
0.3250

65.0336, 0.3192,
0.3283

36.8182, 0.3878,
0.3233

77.5371, 0.3048,
0.3299

30.2831, 0.4219,
0.3217

91.6934, 0.2931,
0.3312

25.0550, 0.4622,
0.3205

93.6488, 0.2906,
0.3289

■ 21.0461, 0.5074,
0.3200

■ 18.1575, 0.5535,
0.3206

■ 16.2753, 0.5945,
0.3225

■ 15.2608, 0.6237,
0.3255

■ 14.9413, 0.6343,
0.3268

Harmonies

Analogous

The Analogous color harmony consists of three colors that are next to each other on the color wheel.



54.1202, 0.3243, 0.3141



54.1202, 0.3373, 0.3267



54.1202, 0.3436, 0.3402

Triad

The Triadic color harmony groups three colors that are evenly spaced from another and form a triangle on the color wheel.



54.1202, 0.3373, 0.3267



54.1202, 0.3164, 0.3542



54.1202, 0.2848, 0.3065

Complementary

The Complementary color scheme is a pair of colors which are on the opposite of each other on the color wheel.



54.1202, 0.3373, 0.3267



65.6757, 0.2924, 0.3313

Split Complementary

Split-complementary colors differ from the complementary color scheme. The scheme consists of three colors, the original color and two neighbors of the complement color.



54.1202, 0.2829, 0.3166



54.1202, 0.3373, 0.3267



54.1202, 0.3008, 0.3446

Square

The Square scheme is like the rectangle color scheme, but the four colors are evenly spaced on the color wheel.



54.1202, 0.3373, 0.3267



54.1202, 0.3312, 0.3565



54.1202, 0.2886, 0.3306



54.1202, 0.2941, 0.3025

Rectangle

The Rectangle color scheme consists of four colors that form a rectangle on the color wheel.



54.1202, 0.3373, 0.3267



54.1202, 0.3430, 0.3480



54.1202, 0.2886, 0.3306



54.1202, 0.2833, 0.3092

Sweetspot

The Sweet Spot groups the original color and five complimentary colors.



54.1226, 0.3373, 0.3267



93.0651, 0.3189, 0.3284



55.1934, 0.3127, 0.2939



19.6495, 0.3201, 0.3283



0.0000, 0.0000, 0.0000



21.4041, 0.3127, 0.3290

Same Dimension

The Same Dimension uses a secret algorithm to generate beautiful new colors.



54.1226, 0.3373, 0.3267



73.0524, 0.3434, 0.3262



60.0091, 0.3367, 0.3446



13.0653, 0.3281, 0.3275



8.9549, 0.6326, 0.3259



0.5851, 0.6112, 0.3140

Inverse Universe

The Inverse Universe completely reimagines the original color for something new.



54.1226, 0.3373, 0.3267



73.0524, 0.3434, 0.3262



59.0878, 0.2906, 0.3129



13.0653, 0.3281, 0.3275



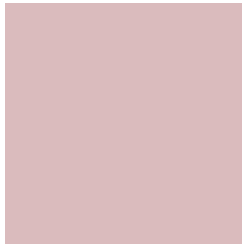
8.9549, 0.6326, 0.3259



0.5851, 0.6112, 0.3140

Previews

White Background



This preview shows how the Yxy color 54.1202, 0.3373, 0.3267 looks on a white background.

Color Contrast Check

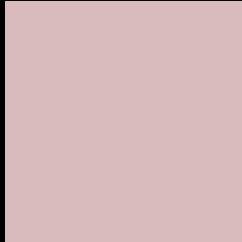
Large Text (above 18pt) WCAG AA × Fail

Any Text WCAG AA × Fail

Large Text (above 18pt) WCAG AAA × Fail

Any Text WCAG AAA × Fail

Black Background



This preview shows how the Yxy color 54.1202, 0.3373, 0.3267 looks on a black background.

Color Contrast Check

Large Text (above 18pt) WCAG AA ✓ Pass

Any Text WCAG AA ✓ Pass

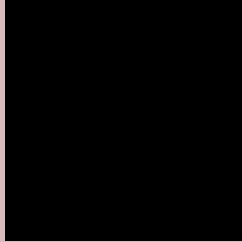
Large Text (above 18pt) WCAG AAA ✓ Pass

Any Text WCAG AAA ✓ Pass

If you want to check with other color combinations, try the [Color Contrast Checker](#).

Yxy 54.1202, 0.3373, 0.3267

Background



This preview shows how black text looks on a background with the Yxy color 54.1202, 0.3373, 0.3267.



This preview shows how white text looks on a background with the Yxy color 54.1202, 0.3373, 0.3267.

Color Blindness Simulation

Color vision deficiency is a very complex topic, and I could not describe the different causes any better than Wikipedia does, so if you want to learn more, you should check out their [article about color blindness](#).

Dichromacy



Original Color

54.1202, 0.3373, 0.3267

Protanopia

54.4396, 0.3167, 0.3302

Deuteranopia

54.0876, 0.3346, 0.3279



Tritanopia

53.9281, 0.3295, 0.3118

Trichromacy



Original Color

54.1202, 0.3373, 0.3267

Protanomaly

54.0465, 0.3234, 0.3278

Deuteranomaly

54.2395, 0.3354, 0.3279

Tritanomaly

54.1634, 0.3326, 0.3175

Monochromacy



Original Color

54.1202, 0.3373, 0.3267

Achromatopsia

55.8340, 0.3127, 0.3290

Achromatomaly

55.0141, 0.3217, 0.3278

CSS Examples

Text

The CSS property to change the color of the text to Yxy 54.1202, 0.3373, 0.3267 is called "color". The color property can be set on classes, ids or directly on the HTML element.

This example shows how text in the color `rgb(218, 187, 189)` looks like.

```
.text, #text, p{  
    color:rgb(218, 187, 189)  
}
```

If you want to add a text shadow in that color use the text-shadow property, you can generate a text shadow directly with our [CSS Text Shadow Generator](#).

Here you see how black text with a 4 pixel rgb(218, 187, 189) colored shadow looks like.

```
.shadow{ text-shadow: 4px 4px 2px rgb(218, 187, 189) }
```

Border

The CSS property to change the border of an element to Yxy 54.1202, 0.3373, 0.3267 is called "border". The border property can be set on classes, ids or directly on the HTML element.

This example shows the color as border, it can be applied via the CSS property "border" or "border-color".

```
.border, #border, table{ border:4px solid rgb(218, 187, 189) }
```

If only the border color should be changed use the property border-color.

```
.border{ border-color:rgb(218, 187, 189) }
```

If you want to add a box shadow in that color use:

Here you see how a box with a 4 pixel rgb(218, 187, 189) colored shadow looks like.

```
.boxshadow{ -moz-box-shadow:4px 4px 4px  
4px rgb(218, 187, 189); -webkit-box-  
shadow:4px 4px 4px 4px rgb(218, 187, 189);  
box-shadow:4px 4px 4px 4px rgb(218, 187,  
189) }
```


Background

The CSS property to change the background color of an element to Yxy 54.1202, 0.3373, 0.3267 is called "background". The background property can be set on classes, ids or directly on the HTML element.

```
.background, #background, body{  
background: rgb(218, 187, 189) }
```

If only the background color should be changed can be used:

```
.background{ background-color: rgb(218,  
187, 189) }
```

This example shows the color as background, it is applied via the CSS property "background".

To optimize and compress your CSS code, you can use our [online CSS compressor and optimizer](#) based on csstidy. If you want to create a linear or radial gradient as background or border, check our [CSS Gradient Generator](#).

Hey! You found this booklet interesting? Support Converting Colors with the new Membership Option!

The pro membership hides all ads, plus gives you double the colors in the color bucket, and more awesome pro features!

[Learn more, Memberships starting at \\$2.50/m!](#)

**Follow me
on Twitter!**

@ConvertingColor