

Converting Colors

Yxy(54.2536, 0.4054, 0.3530)

Have a look what the booklet for
Yxy(54.2536, 0.4054, 0.3530)
contains.

Yxy(54.2199, 0.4050, 0.3524)	3
Conversions	4
Details	6
Harmonies	12
Previews	24
Color Blindness Simulation	27
CSS Examples	30

Color

Yxy(54.2199, 0.4050, 0.3524)

Conversions

Conversions Part 1

Format	Color
Hex	FFAF99
RGB	255, 175, 153
RGB Percent	100%, 69%, 60%
CMY	0.0001, 0.3136, 0.3999
CMYK	0.00, 0.31, 0.40, 0.00
HSL	13°, 100%, 80%
HSV	13°, 40%, 100%
XYZ	62.3129, 54.2199, 37.3262
YIQ	196.4120, 54.7420, 10.1180

Conversions

Conversions Part 2

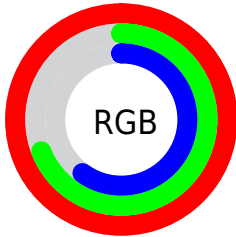
Format	Color
R _Y B	255, 181, 153
Decimal	16756633
CIE Lab	78.59, 26.65, 23.11
CIE LCh	79, 35.272, 40.938
Yxy	54.2199, 0.4050, 0.3524
Android (android.graphics.Color)	4294946713 (0xFFFFAF99)
YUV	196.4120, -21.4021, 51.3817
Hunter-Lab	73.6342, 22.1958, 21.4890

Details

The Yxy color **54.2199, 0.4050, 0.3524** is a light color, and the websafe version is hex **FF9999**. A complement of this color would be **72.2534, 0.2535, 0.3037**, and the grayscale version is **55.5708, 0.3127, 0.3290**.

A 20% lighter version of the original color is **82.9168, 0.3454, 0.3532**, and **26.6141, 0.4297, 0.3560** is the 20% darker color. If you saturate the color by 10%, you get **46.2512, 0.4396, 0.3578**, and if you desaturate by 10%, it is **63.5263, 0.3754, 0.3464**.

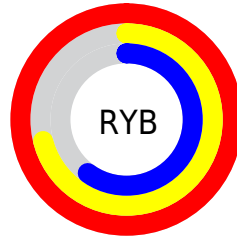
Distribution



Red (100%)

Green (69%)

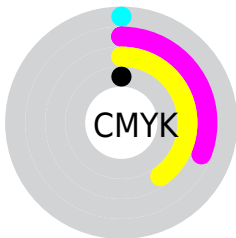
Blue (60%)



Red (100%)

Yellow (71%)

Blue (60%)

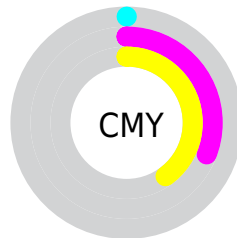


Cyan (0%)

Magenta (31%)

Yellow (40%)

Black (0%)



Cyan (0%)


Magenta (31%)


Yellow (40%)

Brightness & Saturation Gradients


These gradients show how the Yxy color 54.2199, 0.4050, 0.3524 changes by changing the brightness by 10 percent. The first figure shows a shift by +10% for each color and the second figure -10%.


Similar to the brightness gradients but the following saturation gradients show a change of the Yxy color 54.2199, 0.4050, 0.3524 by changing the saturation by 10% instead.

 54.2199, 0.4050,
0.3524


 54.2199, 0.4050,
0.3524


402.9480, 0.3596,
0.3427

 38.7775, 0.4160,
0.3542


 96.3970, 0.3887,
0.3494

 26.5867, 0.4298,
0.3561


 123.9006, 0.3826,
0.3481

 17.2630, 0.4478,
0.3581


156.1933, 0.3773,
0.3469

 10.4222, 0.4719,
0.3599

193.6595, 0.3728,
0.3459

 5.6798, 0.5055,
0.3603

236.6837, 0.3688,
0.3450

 2.6514, 0.5574,
0.3581

285.6503, 0.3654,

 0.9526, 0.6507,

0.3442

0.3493

340.9436, 0.3623,
0.3434

0.0000, 1.0000,
0.0000

0.0000, 0.0000,
0.0000

54.2199, 0.4050,
0.3524

54.2199, 0.4050,
0.3524

46.2512, 0.4396,
0.3578

63.5263, 0.3754,
0.3464

39.5504, 0.4785,
0.3618

74.2205, 0.3505,
0.3403

34.0529, 0.5197,
0.3635

86.3595, 0.3298,
0.3345

29.6852, 0.5597,
0.3618

99.9942, 0.3127,
0.3290

■ 26.3651, 0.5935, 99.9944, 0.3127,
0.3562 0.3290

■ 23.9915, 0.6176,
0.3478

■ 23.9886, 0.6176,
0.3478

Harmonies

Analogous

The Analogous color harmony consists of three colors that are next to each other on the color wheel.



54.2199, 0.3824, 0.3151



54.2199, 0.4050, 0.3524



54.2199, 0.4003, 0.3874

Triad

The Triadic color harmony groups three colors that are evenly spaced from another and form a triangle on the color wheel.



54.2199, 0.4050, 0.3524



54.2199, 0.2820, 0.3832



54.2199, 0.2534, 0.2539

Complementary

The Complementary color scheme is a pair of colors which are on the opposite of each other on the color wheel.



54.2199, 0.4050, 0.3524



72.2534, 0.2535, 0.3037

Split Complementary

Split-complementary colors differ from the complementary color scheme. The scheme consists of three colors, the original color and two neighbors of the complement color.



54.2199, 0.2311, 0.2649



54.2199, 0.4050, 0.3524



54.2199, 0.2463, 0.3382

Square

The Square scheme is like the rectangle color scheme, but the four colors are evenly spaced on the color wheel.



54.2199, 0.4050, 0.3524



54.2199, 0.3276, 0.4106



54.2199, 0.2285, 0.2944



54.2199, 0.2924, 0.2607

Rectangle

The Rectangle color scheme consists of four colors that form a rectangle on the color wheel.



54.2199, 0.4050, 0.3524



54.2199, 0.3831, 0.4048



54.2199, 0.2285, 0.2944



54.2199, 0.2439, 0.2555

Sweetspot

The Sweet Spot groups the original color and five complimentary colors.



54.2225, 0.4050, 0.3524



83.8172, 0.3337, 0.3356



50.0172, 0.3345, 0.2477



17.5912, 0.3362, 0.3364



0.0000, 0.0000, 0.0000



21.4041, 0.3127, 0.3290

Same Dimension

The Same Dimension uses a secret algorithm to generate beautiful new colors.



54.2225, 0.4050, 0.3524



47.7431, 0.4323, 0.3568



77.0735, 0.3842, 0.4015



18.6223, 0.3289, 0.3342



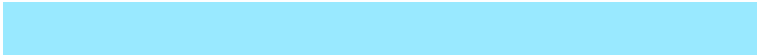
12.7134, 0.6150, 0.3498



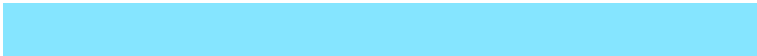
1.3892, 0.5941, 0.3665

Inverse Universe

The Inverse Universe completely reimagines the original color for something new.



72.2534, 0.2535, 0.3037



67.9845, 0.2433, 0.2977



48.1094, 0.2441, 0.2434



19.7770, 0.2980, 0.3237



25.5790, 0.2050, 0.2578



2.6480, 0.2075, 0.2669

Previews

White Background



This preview shows how the Yxy color 54.2199, 0.4050, 0.3524 looks on a white background.

Color Contrast Check

Large Text (above 18pt) WCAG AA × Fail

Any Text WCAG AA × Fail

Large Text (above 18pt) WCAG AAA × Fail

Any Text WCAG AAA × Fail

Black Background



This preview shows how the Yxy color 54.2199, 0.4050, 0.3524 looks on a black background.

Color Contrast Check

Large Text (above 18pt) WCAG AA ✓ Pass

Any Text WCAG AA ✓ Pass

Large Text (above 18pt) WCAG AAA ✓ Pass

Any Text WCAG AAA ✓ Pass

If you want to check with other color combinations, try the [Color Contrast Checker](#).

Yxy 54.2199, 0.4050, 0.3524

Background



This preview shows how black text looks on a background with the Yxy color 54.2199, 0.4050, 0.3524.



This preview shows how white text looks on a background with the Yxy color 54.2199, 0.4050, 0.3524.

Color Blindness Simulation

Color vision deficiency is a very complex topic, and I could not describe the different causes any better than Wikipedia does, so if you want to learn more, you should check out their [article about color blindness](#).

Dichromacy



Original Color

54.2199, 0.4050, 0.3524

Protanopia

54.3140, 0.3475, 0.3681

Deuteranopia

54.2690, 0.3779, 0.3705



Tritanopia

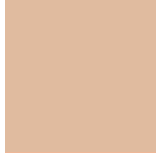
54.2257, 0.3774, 0.3166

Trichromacy



Original Color

54.2199, 0.4050, 0.3524



Protanomaly

53.8911, 0.3676, 0.3617



Deuteranomaly

54.3111, 0.3875, 0.3637



Tritanomaly

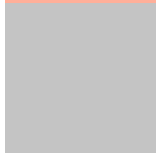
54.1643, 0.3873, 0.3292

Monochromacy



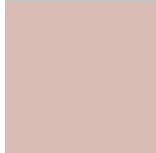
Original Color

54.2199, 0.4050, 0.3524



Achromatopsia

55.2011, 0.3127, 0.3290



Achromatomaly

54.0134, 0.3437, 0.3385

CSS Examples

Text

The CSS property to change the color of the text to Yxy 54.2199, 0.4050, 0.3524 is called "color". The color property can be set on classes, ids or directly on the HTML element.

This example shows how text in the color `rgb(255, 175, 153)` looks like.

```
.text, #text, p{  
    color:rgb(255, 175, 153)  
}
```

If you want to add a text shadow in that color use the text-shadow property, you can generate a text shadow directly with our [CSS Text Shadow Generator](#).

Here you see how black text with a 4 pixel rgb(255, 175, 153) colored shadow looks like.

```
.shadow{ text-shadow: 4px 4px 2px rgb(255, 175, 153) }
```

Border

The CSS property to change the border of an element to Yxy 54.2199, 0.4050, 0.3524 is called "border". The border property can be set on classes, ids or directly on the HTML element.

This example shows the color as border, it can be applied via the CSS property "border" or "border-color".

```
.border, #border, table{ border:4px solid rgb(255, 175, 153) }
```

If only the border color should be changed use the property `border-color`.

```
.border{ border-color:rgb(255, 175, 153) }
```

If you want to add a box shadow in that color use:

Here you see how a box with a 4 pixel `rgb(255, 175, 153)` colored shadow looks like.

```
.boxshadow{ -moz-box-shadow:4px 4px 4px  
4px rgb(255, 175, 153); -webkit-box-  
shadow:4px 4px 4px 4px rgb(255, 175, 153);  
box-shadow:4px 4px 4px 4px rgb(255, 175,  
153) }
```


Background

The CSS property to change the background color of an element to Yxy 54.2199, 0.4050, 0.3524 is called "background". The background property can be set on classes, ids or directly on the HTML element.

```
.background, #background, body{  
background: rgb(255, 175, 153) }
```

If only the background color should be changed can be used:

```
.background{ background-color: rgb(255,  
175, 153) }
```

This example shows the color as background, it is applied via the CSS property "background".

To optimize and compress your CSS code, you can use our [online CSS compressor and optimizer](#) based on csstidy. If you want to create a linear or radial gradient as background or border, check our [CSS Gradient Generator](#).

Hey! You found this booklet interesting? Support Converting Colors with the new Membership Option!

The pro membership hides all ads, plus gives you double the colors in the color bucket, and more awesome pro features!

[Learn more, Memberships starting at \\$2.50/m!](#)

**Follow me
on Twitter!**

@ConvertingColor