

# Converting Colors

Yxy(54.4089, 0.3281, 0.3351)

Have a look what the booklet for  
Yxy(54.4089, 0.3281, 0.3351)  
contains.

<b>Yxy(54.4089, 0.3281, 0.3351)</b> .....	3
<b>Conversions</b> .....	4
<b>Details</b> .....	6
<b>Harmonies</b> .....	12
<b>Previews</b> .....	24
<b>Color Blindness Simulation</b> .....	27
<b>CSS Examples</b> .....	30

# Color

**Yxy(54.4089, 0.3281, 0.3351)**

# Conversions

## Conversions Part 1

Format	Color
Hex	CEC0BB
RGB	206, 192, 187
RGB Percent	81%, 75%, 73%
CMY	0.1921, 0.2470, 0.2668
CMYK	0.00, 0.07, 0.09, 0.19
HSL	16°, 16%, 77%
HSV	16°, 9%, 81%
XYZ	53.2723, 54.4089, 54.6849
YIQ	195.6160, 9.9490, 1.4130

# Conversions

## Conversions Part 2

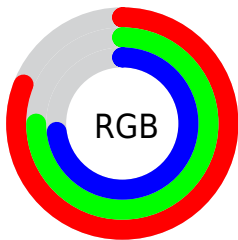
Format	Color
R <sub>Y</sub> B	206, 194, 187
Decimal	13549755
CIE Lab	78.70, 4.06, 4.30
CIE LCh	79, 5.913, 46.640
Yxy	54.4089, 0.3281, 0.3351
Android (android.graphics.Color)	4291739835 (0xFFCEC0BB)
YUV	195.6160, -4.2477, 9.1068
Hunter-Lab	73.7624, -0.1687, 7.6781

# Details

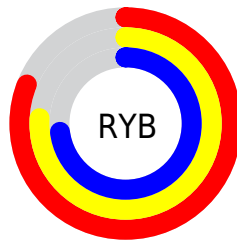
The Yxy color `54.4089, 0.3281, 0.3351` is a light color, and the websafe version is hex `CCCCCC`. A complement of this color would be `56.7769, 0.2985, 0.3228`, and the grayscale version is `54.9823, 0.3127, 0.3290`.

A 20% lighter version of the original color is `94.8659, 0.3202, 0.3338`, and `26.8619, 0.3323, 0.3371` is the 20% darker color. If you saturate the color by 10%, you get `47.2777, 0.3478, 0.3421`, and if you desaturate by 10%, it is `62.3562, 0.3116, 0.3285`.

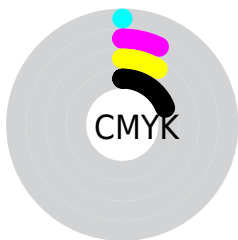
# Distribution



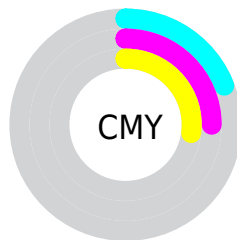
- Red (81%)
- Green (75%)
- Blue (73%)



- Red (81%)
- Yellow (76%)
- Blue (73%)



- Cyan (0%)
- Magenta (7%)
- Yellow (9%)
- Black (19%)




- Cyan (19%)
- Magenta (25%)
- Yellow (27%)


# Brightness & Saturation Gradients

These gradients show how the Yxy color 54.4089, 0.3281, 0.3351 changes by changing the brightness by 10 percent. The first figure shows a shift by +10% for each color and the second figure -10%.


Similar to the brightness gradients but the following saturation gradients show a change of the Yxy color 54.4089, 0.3281, 0.3351 by changing the saturation by 10% instead.




 54.4089, 0.3281,  
0.3351

 54.4089, 0.3281,  
0.3351


403.6674, 0.3206,  
0.3322

 38.9287, 0.3299,  
0.3358


 96.6744, 0.3254,  
0.3341

 26.7042, 0.3323,  
0.3367


124.2284, 0.3244,  
0.3337

 17.3512, 0.3353,  
0.3378


156.5758, 0.3235,  
0.3333

 10.4852, 0.3395,  
0.3393

194.1010, 0.3228,  
0.3330

 5.7218, 0.3455,  
0.3415

237.1883, 0.3221,  
0.3328

 2.6767, 0.3551,  
0.3448

286.2222, 0.3215,

 0.9654, 0.3747,

0.3326

0.3523

341.5871, 0.3210,  
0.3324

0.0000, 0.0000,  
0.0000

54.4089, 0.3281,  
0.3351

54.4089, 0.3281,  
0.3351

47.2777, 0.3478,  
0.3421

62.3562, 0.3116,  
0.3285

40.9295, 0.3714,  
0.3494

71.1372, 0.2977,  
0.3225

35.3392, 0.3991,  
0.3567

80.7779, 0.2861,  
0.3169

30.4779, 0.4312,  
0.3635

90.3410, 0.2837,  
0.3264

26.3146, 0.4672,  
0.3688

91.8640, 0.2838,  
0.3289

■ 22.8163, 0.5056,  
0.3718

■ 19.9466, 0.5437,  
0.3712

■ 17.6657, 0.5775,  
0.3664

■ 15.9237, 0.6038,  
0.3579

# Harmonies

## Analogous

The Analogous color harmony consists of three colors that are next to each other on the color wheel.



54.4089, 0.3252, 0.3283



54.4089, 0.3281, 0.3351



54.4089, 0.3268, 0.3404

# Triad

The Triadic color harmony groups three colors that are evenly spaced from another and form a triangle on the color wheel.



54.4089, 0.3281, 0.3351



54.4089, 0.3064, 0.3364



54.4089, 0.3037, 0.3156

# Complementary

The Complementary color scheme is a pair of colors which are on the opposite of each other on the color wheel.



54.4089, 0.3281, 0.3351



56.7769, 0.2985, 0.3228

# Split Complementary

Split-complementary colors differ from the complementary color scheme. The scheme consists of three colors, the original color and two neighbors of the complement color.



54.4089, 0.2988, 0.3176



54.4089, 0.3281, 0.3351



54.4089, 0.3004, 0.3295

# Square

The Square scheme is like the rectangle color scheme, but the four colors are evenly spaced on the color wheel.



54.4089, 0.3281, 0.3351



54.4089, 0.3142, 0.3413



54.4089, 0.2976, 0.3226



54.4089, 0.3111, 0.3172



# Rectangle

The Rectangle color scheme consists of four colors that form a rectangle on the color wheel.



54.4089, 0.3281, 0.3351



54.4089, 0.3237, 0.3423



54.4089, 0.2976, 0.3226



54.4089, 0.3017, 0.3159

# Sweetspot

The Sweet Spot groups the original color and five complimentary colors.



54.4113, 0.3281, 0.3351



95.9804, 0.3175, 0.3310



52.8768, 0.3174, 0.3120



20.3183, 0.3188, 0.3315



0.0000, 0.0000, 0.0000



21.4041, 0.3127, 0.3290

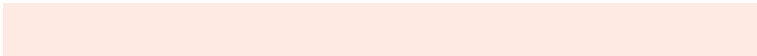


# Same Dimension

The Same Dimension uses a secret algorithm to generate beautiful new colors.



54.4113, 0.3281, 0.3351



85.8625, 0.3316, 0.3364



58.6009, 0.3269, 0.3460



11.6886, 0.3284, 0.3352



9.8719, 0.6031, 0.3593



0.6366, 0.5636, 0.3907

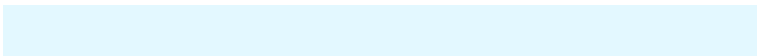


# Inverse Universe

The Inverse Universe completely reimagines the original color for something new.



56.7769, 0.2985, 0.3228



90.4167, 0.2956, 0.3215



52.5950, 0.2985, 0.3114



12.2050, 0.2983, 0.3227



16.6329, 0.2004, 0.2415



0.9780, 0.2057, 0.2606



# Previews

## White Background



This preview shows how the Yxy color 54.4089, 0.3281, 0.3351 looks on a white background.

## Color Contrast Check

Large Text (above 18pt) WCAG AA × Fail

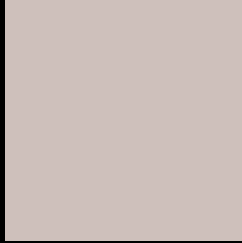
Any Text WCAG AA × Fail

Large Text (above 18pt) WCAG AAA × Fail

Any Text WCAG AAA × Fail



# Black Background



This preview shows how the Yxy color 54.4089, 0.3281, 0.3351 looks on a black background.

## Color Contrast Check

Large Text (above 18pt) WCAG AA ✓ Pass

Any Text WCAG AA ✓ Pass

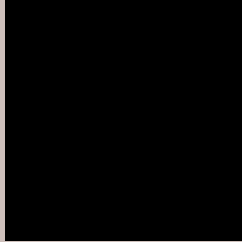
Large Text (above 18pt) WCAG AAA ✓ Pass

Any Text WCAG AAA ✓ Pass

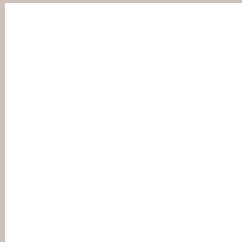
If you want to check with other color combinations, try the [Color Contrast Checker](#).

**Yxy 54.4089, 0.3281, 0.3351**

## **Background**



This preview shows how black text looks on a background with the Yxy color 54.4089, 0.3281, 0.3351.



This preview shows how white text looks on a background with the Yxy color 54.4089, 0.3281, 0.3351.

# Color Blindness Simulation

Color vision deficiency is a very complex topic, and I could not describe the different causes any better than Wikipedia does, so if you want to learn more, you should check out their [article about color blindness](#).

## Dichromacy



### Original Color

54.4089, 0.3281, 0.3351

### Protanopia

54.4938, 0.3221, 0.3363

### Deuteranopia

54.1962, 0.3363, 0.3291



## Tritanopia

54.1647, 0.3168, 0.3114

# Trichromacy



## Original Color

54.4089, 0.3281, 0.3351

## Protanomaly

54.3273, 0.3238, 0.3351

## Deuteranomaly

54.0231, 0.3327, 0.3302

## Tritanomaly

54.1695, 0.3205, 0.3195

# Monochromacy



## Original Color

54.4089, 0.3281, 0.3351

## Achromatopsia

55.2011, 0.3127, 0.3290

## Achromatomaly

55.1598, 0.3182, 0.3314

# CSS Examples

## Text

The CSS property to change the color of the text to Yxy 54.4089, 0.3281, 0.3351 is called "color". The color property can be set on classes, ids or directly on the HTML element.

This example shows how text in the color `rgb(206, 192, 187)` looks like.

```
.text, #text, p{  
    color:rgb(206, 192, 187)  
}
```

If you want to add a text shadow in that color use the text-shadow property, you can generate a text shadow directly with our [CSS Text Shadow Generator](#).

Here you see how black text with a 4 pixel rgb(206, 192, 187) colored shadow looks like.

```
.shadow{ text-shadow: 4px 4px 2px rgb(206, 192, 187) }
```

## Border

The CSS property to change the border of an element to Yxy 54.4089, 0.3281, 0.3351 is called "border". The border property can be set on classes, ids or directly on the HTML element.

This example shows the color as border, it can be applied via the CSS property "border" or "border-color".

```
.border, #border, table{ border:4px solid rgb(206, 192, 187) }
```

If only the border color should be changed use the property `border-color`.

```
.border{ border-color:rgb(206, 192, 187) }
```

If you want to add a box shadow in that color use:

Here you see how a box with a 4 pixel `rgb(206, 192, 187)` colored shadow looks like.

```
.boxshadow{ -moz-box-shadow:4px 4px 4px  
4px rgb(206, 192, 187); -webkit-box-  
shadow:4px 4px 4px 4px rgb(206, 192, 187);  
box-shadow:4px 4px 4px 4px rgb(206, 192,  
187) }
```



# Background

The CSS property to change the background color of an element to Yxy 54.4089, 0.3281, 0.3351 is called "background". The background property can be set on classes, ids or directly on the HTML element.

```
.background, #background, body{  
background: rgb(206, 192, 187) }
```

If only the background color should be changed can be used:

```
.background{ background-color: rgb(206,  
192, 187) }
```

This example shows the color as background, it is applied via the CSS property "background".

To optimize and compress your CSS code, you can use our [online CSS compressor and optimizer](#) based on csstidy. If you want to create a linear or radial gradient as background or border, check our [CSS Gradient Generator](#).

Hey! You found this booklet interesting? Support Converting Colors with the new Membership Option!

The pro membership hides all ads, plus gives you double the colors in the color bucket, and more awesome pro features!

**[Learn more, Memberships starting at \\$2.50/m!](#)**

**Follow me  
on Twitter!**

@ConvertingColor