

# Converting Colors

$Yxy(54.5304, 0.3424, 0.3421)$

Have a look what the booklet for  
Yxy(54.5304, 0.3424, 0.3421)  
contains.

<b>Yxy(54.5287, 0.3424, 0.3421)</b> .....	3
<b>Conversions</b> .....	4
<b>Details</b> .....	6
<b>Harmonies</b> .....	12
<b>Previews</b> .....	24
<b>Color Blindness Simulation</b> .....	27
<b>CSS Examples</b> .....	30

# Color

**Yxy(54.5287, 0.3424, 0.3421)**

# Conversions

## Conversions Part 1

Format	Color
Hex	D7BEB3
RGB	215, 190, 179
RGB Percent	84%, 75%, 70%
CMY	0.1568, 0.2549, 0.2981
CMYK	0.00, 0.12, 0.17, 0.16
HSL	18°, 31%, 77%
HSV	18°, 17%, 84%
XYZ	54.5765, 54.5287, 50.2888
YIQ	196.2210, 18.4310, 1.8790

# Conversions

## Conversions Part 2

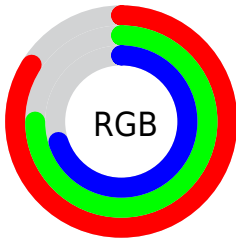
<b>Format</b>	<b>Color</b>
<b>R<sub>YB</sub></b>	215, 195, 179
Decimal	14139059
CIE Lab	78.77, 7.10, 8.80
CIE LCh	79, 11.304, 51.108
Yxy	54.5287, 0.3424, 0.3421
Android (android.graphics.Color)	4292329139 (0xFFD7BEB3)
YUV	196.2210, -8.4900, 16.4692
Hunter-Lab	73.8436, 2.7001, 11.3129

# Details

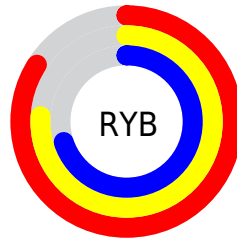
The Yxy color **54.5287, 0.3424, 0.3421** is a light color, and the websafe version is hex **CCCCCC**. A complement of this color would be **57.6754, 0.2869, 0.3155**, and the grayscale version is **55.3868, 0.3127, 0.3290**.

A 20% lighter version of the original color is **93.1697, 0.3252, 0.3397**, and **26.8713, 0.3508, 0.3464** is the 20% darker color. If you saturate the color by 10%, you get **47.5889, 0.3646, 0.3505**, and if you desaturate by 10%, it is **62.2714, 0.3237, 0.3341**.

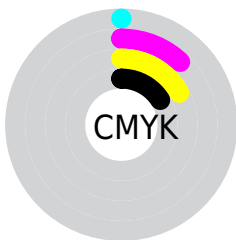
# Distribution



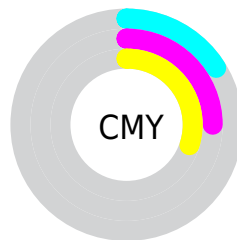
- Red (84%)
- Green (75%)
- Blue (70%)



- Red (84%)
- Yellow (76%)
- Blue (70%)



- Cyan (0%)
- Magenta (12%)
- Yellow (17%)
- Black (16%)




- Cyan (16%)
- Magenta (25%)
- Yellow (30%)

# Brightness & Saturation Gradients

These gradients show how the Yxy color 54.5287, 0.3424, 0.3421 changes by changing the brightness by 10 percent. The first figure shows a shift by +10% for each color and the second figure -10%.


Similar to the brightness gradients but the following saturation gradients show a change of the Yxy color 54.5287, 0.3424, 0.3421 by changing the saturation by 10% instead.




 54.5287, 0.3424,  
0.3421

 54.5287, 0.3424,  
0.3421


404.1229, 0.3279,  
0.3359

 39.0245, 0.3459,  
0.3436


 96.8501, 0.3372,  
0.3399

 26.7788, 0.3504,  
0.3454


124.4361, 0.3352,  
0.3391

 17.4072, 0.3563,  
0.3477


156.8181, 0.3335,  
0.3384

 10.5252, 0.3644,  
0.3508

194.3806, 0.3321,  
0.3377

 5.7486, 0.3761,  
0.3550

237.5079, 0.3308,  
0.3372

 2.6928, 0.3945,  
0.3612

286.5845, 0.3297,

 0.9735, 0.4423,

0.3367

0.3836

341.9947, 0.3287,  
0.3363

0.0000, 1.0000,  
0.0000

0.0000, 0.0000,  
0.0000

54.5287, 0.3424,  
0.3421

54.5287, 0.3424,  
0.3421

47.5889, 0.3646,  
0.3505

62.2714, 0.3237,  
0.3341

41.4186, 0.3906,  
0.3589

70.8346, 0.3079,  
0.3266

35.9926, 0.4206,  
0.3670

80.2443, 0.2946,  
0.3198

31.2817, 0.4543,  
0.3738

89.8630, 0.2886,  
0.3235

■ 27.2545, 0.4907,  
0.3783

■ 93.1894, 0.2889,  
0.3289

■ 23.8771, 0.5274,  
0.3793

■ 21.1123, 0.5612,  
0.3758

■ 18.9175, 0.5886,  
0.3676

■ 18.3148, 0.5965,  
0.3646

# Harmonies

## Analogous

The Analogous color harmony consists of three colors that are next to each other on the color wheel.



54.5287, 0.3380, 0.3294



54.5287, 0.3424, 0.3421



54.5287, 0.3386, 0.3517

# Triad

The Triadic color harmony groups three colors that are evenly spaced from another and form a triangle on the color wheel.



54.5287, 0.3424, 0.3421



54.5287, 0.2986, 0.3414



54.5287, 0.2974, 0.3037

# Complementary

The Complementary color scheme is a pair of colors which are on the opposite of each other on the color wheel.



54.5287, 0.3424, 0.3421



57.6754, 0.2869, 0.3155

# Split Complementary

Split-complementary colors differ from the complementary color scheme. The scheme consists of three colors, the original color and two neighbors of the complement color.



54.5287, 0.2873, 0.3062



54.5287, 0.3424, 0.3421



54.5287, 0.2880, 0.3278

# Square

The Square scheme is like the rectangle color scheme, but the four colors are evenly spaced on the color wheel.



54.5287, 0.3424, 0.3421



54.5287, 0.3131, 0.3517



54.5287, 0.2839, 0.3148



54.5287, 0.3117, 0.3077



# Rectangle

The Rectangle color scheme consists of four colors that form a rectangle on the color wheel.



54.5287, 0.3424, 0.3421



54.5287, 0.3320, 0.3550



54.5287, 0.2839, 0.3148



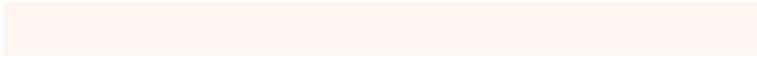
54.5287, 0.2934, 0.3038

# Sweetspot

The Sweet Spot groups the original color and five complimentary colors.



54.5311, 0.3424, 0.3421



93.6874, 0.3208, 0.3328



51.0540, 0.3233, 0.2997



19.8684, 0.3220, 0.3333



0.0000, 0.0000, 0.0000



21.4041, 0.3127, 0.3290

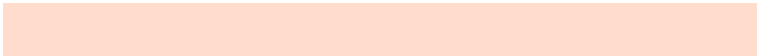


# Same Dimension

The Same Dimension uses a secret algorithm to generate beautiful new colors.



54.5311, 0.3424, 0.3421



76.5919, 0.3496, 0.3450



62.7225, 0.3391, 0.3625



13.0338, 0.3283, 0.3362



11.1178, 0.5938, 0.3667



0.8155, 0.5595, 0.3940

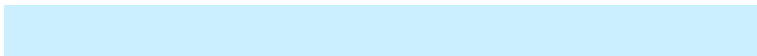


# Inverse Universe

The Inverse Universe completely reimagines the original color for something new.



57.6754, 0.2869, 0.3155



82.0297, 0.2817, 0.3125



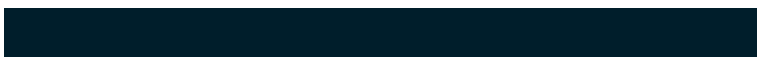
49.6883, 0.2859, 0.2932



13.4372, 0.2982, 0.3217



16.0374, 0.1963, 0.2267

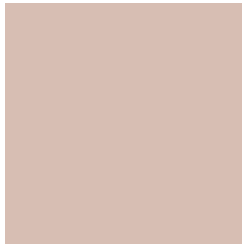


1.1105, 0.2018, 0.2465



# Previews

## White Background



This preview shows how the Yxy color 54.5287, 0.3424, 0.3421 looks on a white background.

## Color Contrast Check

Large Text (above 18pt) WCAG AA × Fail

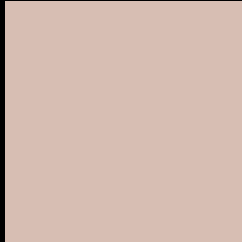
Any Text WCAG AA × Fail

Large Text (above 18pt) WCAG AAA × Fail

Any Text WCAG AAA × Fail



# Black Background



This preview shows how the Yxy color 54.5287, 0.3424, 0.3421 looks on a black background.

## Color Contrast Check

Large Text (above 18pt) WCAG AA ✓ Pass

Any Text WCAG AA ✓ Pass

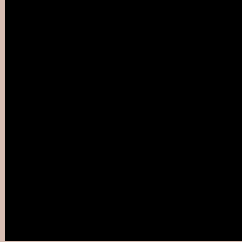
Large Text (above 18pt) WCAG AAA ✓ Pass

Any Text WCAG AAA ✓ Pass

If you want to check with other color combinations, try the [Color Contrast Checker](#).

**Yxy 54.5287, 0.3424, 0.3421**

## **Background**



This preview shows how black text looks on a background with the Yxy color 54.5287, 0.3424, 0.3421.



This preview shows how white text looks on a background with the Yxy color 54.5287, 0.3424, 0.3421.

# Color Blindness Simulation

Color vision deficiency is a very complex topic, and I could not describe the different causes any better than Wikipedia does, so if you want to learn more, you should check out their [article about color blindness](#).

## Dichromacy



### Original Color

54.5287, 0.3424, 0.3421

### Protanopia

54.4763, 0.3291, 0.3449

### Deuteranopia

54.4368, 0.3471, 0.3396



## Tritanopia

54.6631, 0.3276, 0.3129

# Trichromacy



**Original Color**

54.5287, 0.3424, 0.3421

**Protanomaly**

54.7006, 0.3343, 0.3447

**Deuteranomaly**

54.5553, 0.3451, 0.3408

**Tritanomaly**

54.5684, 0.3331, 0.3232

# Monochromacy



**Original Color**

54.5287, 0.3424, 0.3421

**Achromatopsia**

55.2011, 0.3127, 0.3290

**Achromatomaly**

54.9978, 0.3230, 0.3338

# CSS Examples

## Text

The CSS property to change the color of the text to Yxy 54.5287, 0.3424, 0.3421 is called "color". The color property can be set on classes, ids or directly on the HTML element.

This example shows how text in the color `rgb(215, 190, 179)` looks like.

```
.text, #text, p{  
    color:rgb(215, 190, 179)  
}
```

If you want to add a text shadow in that color use the text-shadow property, you can generate a text shadow directly with our [CSS Text Shadow Generator](#).

Here you see how black text with a 4 pixel rgb(215, 190, 179) colored shadow looks like.

```
.shadow{ text-shadow: 4px 4px 2px rgb(215, 190, 179) }
```

## Border

The CSS property to change the border of an element to Yxy 54.5287, 0.3424, 0.3421 is called "border". The border property can be set on classes, ids or directly on the HTML element.

This example shows the color as border, it can be applied via the CSS property "border" or "border-color".

```
.border, #border, table{ border:4px solid rgb(215, 190, 179) }
```

If only the border color should be changed use the property `border-color`.

```
.border{ border-color:rgb(215, 190, 179) }
```

If you want to add a box shadow in that color use:

Here you see how a box with a 4 pixel `rgb(215, 190, 179)` colored shadow looks like.

```
.boxshadow{ -moz-box-shadow:4px 4px 4px 4px rgb(215, 190, 179); -webkit-box-shadow:4px 4px 4px 4px rgb(215, 190, 179); box-shadow:4px 4px 4px 4px rgb(215, 190, 179) }
```



# Background

The CSS property to change the background color of an element to Yxy 54.5287, 0.3424, 0.3421 is called "background". The background property can be set on classes, ids or directly on the HTML element.

```
.background, #background, body{  
background: rgb(215, 190, 179) }
```

If only the background color should be changed can be used:

```
.background{ background-color: rgb(215,  
190, 179) }
```

This example shows the color as background, it is applied via the CSS property "background".

To optimize and compress your CSS code, you can use our [online CSS compressor and optimizer](#) based on csstidy. If you want to create a linear or radial gradient as background or border, check our [CSS Gradient Generator](#).

Hey! You found this booklet interesting? Support Converting Colors with the new Membership Option!

The pro membership hides all ads, plus gives you double the colors in the color bucket, and more awesome pro features!

**[Learn more, Memberships starting at \\$2.50/m!](#)**

**Follow me  
on Twitter!**

@ConvertingColor