

Converting Colors

$Y_{xy}(54.5465, 0.3415, 0.3250)$

Have a look what the booklet for
Yxy(54.5465, 0.3415, 0.3250)
contains.

Yxy(54.5235, 0.3409, 0.3245)	3
Conversions	4
Details	6
Harmonies	12
Previews	24
Color Blindness Simulation	27
CSS Examples	30

Color

Yxy(54.5235, 0.3409, 0.3245)

Conversions

Conversions Part 1

Format	Color
Hex	DFBABE
RGB	223, 186, 190
RGB Percent	87%, 73%, 75%
CMY	0.1256, 0.2705, 0.2549
CMYK	0.00, 0.17, 0.15, 0.13
HSL	354°, 37%, 80%
HSV	354°, 17%, 87%
XYZ	57.2791, 54.5235, 56.2205
YIQ	197.5190, 20.7680, 9.0880

Conversions

Conversions Part 2

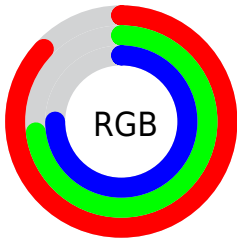
Format	Color
R _Y B	223, 186, 190
Decimal	14662334
CIE Lab	78.77, 13.86, 2.94
CIE LCh	79, 14.168, 11.972
Yxy	54.5235, 0.3409, 0.3245
Android (android.graphics.Color)	4292852414 (0xFFDFBABE)
YUV	197.5190, -3.7069, 22.3468
Hunter-Lab	73.8400, 9.2457, 6.5456

Details

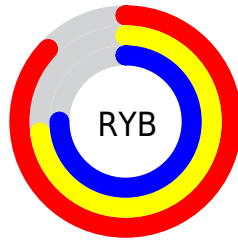
The Yxy color $54.5235, 0.3409, 0.3245$ is a light color, and the websafe version is hex `FFCCCC`. A complement of this color would be $68.3176, 0.2901, 0.3336$, and the grayscale version is $56.1786, 0.3127, 0.3290$.

A 20% lighter version of the original color is $91.4181, 0.3188, 0.3252$, and $26.7967, 0.3476, 0.3230$ is the 20% darker color. If you saturate the color by 10%, you get $45.0403, 0.3635, 0.3216$, and if you desaturate by 10%, it is $65.5962, 0.3227, 0.3273$.

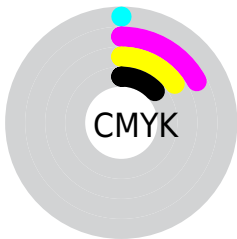
Distribution



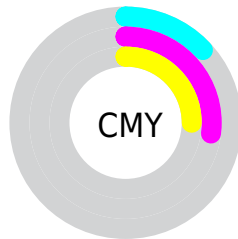
- Red (87%)
- Green (73%)
- Blue (75%)



- Red (87%)
- Yellow (73%)
- Blue (75%)



- Cyan (0%)
- Magenta (17%)
- Yellow (15%)
- Black (13%)





- Cyan (13%)
- Magenta (27%)
- Yellow (25%)

Brightness & Saturation Gradients


These gradients show how the Yxy color 54.5235, 0.3409, 0.3245 changes by changing the brightness by 10 percent. The first figure shows a shift by +10% for each color and the second figure -10%.


Similar to the brightness gradients but the following saturation gradients show a change of the Yxy color 54.5235, 0.3409, 0.3245 by changing the saturation by 10% instead.


 54.5235, 0.3409,
0.3245

 54.5235, 0.3409,
0.3245


404.1031, 0.3271,
0.3268

 39.0203, 0.3443,
0.3239


 96.8425, 0.3360,
0.3253

 26.7756, 0.3485,
0.3232

124.4271, 0.3341,
0.3257

 17.4047, 0.3541,
0.3221


156.8076, 0.3325,
0.3259

 10.5235, 0.3617,
0.3207

194.3685, 0.3311,
0.3262

 5.7474, 0.3728,
0.3185

237.4941, 0.3299,
0.3263

 2.6921, 0.3903,
0.3149

286.5688, 0.3289,

 0.9732, 0.4224,

0.3265

0.3081

341.9770, 0.3279,
0.3267

0.0000, 1.0000,
0.0000

0.0000, 0.0000,
0.0000

54.5235, 0.3409,
0.3245

54.5235, 0.3409,
0.3245

45.0403, 0.3635,
0.3216

65.5962, 0.3227,
0.3273

37.0669, 0.3915,
0.3187

78.3191, 0.3081,
0.3299

30.5273, 0.4254,
0.3161

92.7584, 0.2963,
0.3322

25.3364, 0.4653,
0.3142

94.4242, 0.2934,
0.3289

■ 21.3998, 0.5094,
0.3135

■ 18.6111, 0.5542,
0.3146

■ 16.8462, 0.5937,
0.3177

■ 15.9482, 0.6220,
0.3225

■ 15.7504, 0.6290,
0.3238

Harmonies

Analogous

The Analogous color harmony consists of three colors that are next to each other on the color wheel.



54.5235, 0.3247, 0.3099



54.5235, 0.3409, 0.3245



54.5235, 0.3494, 0.3406

Triad

The Triadic color harmony groups three colors that are evenly spaced from another and form a triangle on the color wheel.



54.5235, 0.3409, 0.3245



54.5235, 0.3190, 0.3601



54.5235, 0.2787, 0.3029

Complementary

The Complementary color scheme is a pair of colors which are on the opposite of each other on the color wheel.



54.5235, 0.3409, 0.3245



68.3176, 0.2901, 0.3336

Split Complementary

Split-complementary colors differ from the complementary color scheme. The scheme consists of three colors, the original color and two neighbors of the complement color.



54.5235, 0.2774, 0.3156



54.5235, 0.3409, 0.3245



54.5235, 0.3002, 0.3493

Square

The Square scheme is like the rectangle color scheme, but the four colors are evenly spaced on the color wheel.



54.5235, 0.3409, 0.3245



54.5235, 0.3364, 0.3617



54.5235, 0.2851, 0.3327



54.5235, 0.2889, 0.2975

Rectangle

The Rectangle color scheme consists of four colors that form a rectangle on the color wheel.



54.5235, 0.3409, 0.3245



54.5235, 0.3494, 0.3502



54.5235, 0.2851, 0.3327



54.5235, 0.2773, 0.3064

Sweetspot

The Sweet Spot groups the original color and five complimentary colors.



54.5259, 0.3409, 0.3245



91.4221, 0.3202, 0.3277



55.4584, 0.3112, 0.2877



19.3199, 0.3213, 0.3275



0.0000, 0.0000, 0.0000



21.4041, 0.3127, 0.3290

Same Dimension

The Same Dimension uses a secret algorithm to generate beautiful new colors.



54.5259, 0.3409, 0.3245



69.0741, 0.3484, 0.3235



60.6235, 0.3416, 0.3452



13.7244, 0.3275, 0.3265



9.2712, 0.6267, 0.3226



0.6508, 0.5961, 0.3058

Inverse Universe

The Inverse Universe completely reimagines the original color for something new.



54.5259, 0.3409, 0.3245



69.0741, 0.3484, 0.3235



61.2740, 0.2870, 0.3122



13.7244, 0.3275, 0.3265



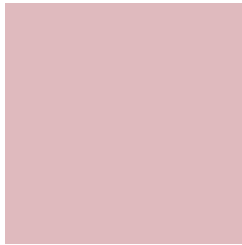
9.2712, 0.6267, 0.3226



0.6508, 0.5961, 0.3058

Previews

White Background



This preview shows how the Yxy color 54.5235, 0.3409, 0.3245 looks on a white background.

Color Contrast Check

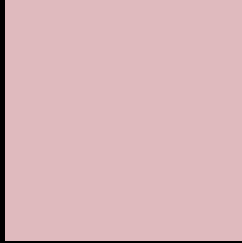
Large Text (above 18pt) WCAG AA × Fail

Any Text WCAG AA × Fail

Large Text (above 18pt) WCAG AAA × Fail

Any Text WCAG AAA × Fail

Black Background



This preview shows how the Yxy color 54.5235, 0.3409, 0.3245 looks on a black background.

Color Contrast Check

Large Text (above 18pt) WCAG AA ✓ Pass

Any Text WCAG AA ✓ Pass

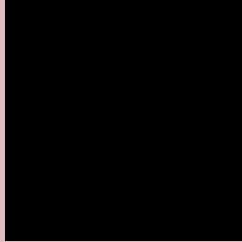
Large Text (above 18pt) WCAG AAA ✓ Pass

Any Text WCAG AAA ✓ Pass

If you want to check with other color combinations, try the [Color Contrast Checker](#).

Yxy 54.5235, 0.3409, 0.3245

Background



This preview shows how black text looks on a background with the Yxy color 54.5235, 0.3409, 0.3245.



This preview shows how white text looks on a background with the Yxy color 54.5235, 0.3409, 0.3245.

Color Blindness Simulation

Color vision deficiency is a very complex topic, and I could not describe the different causes any better than Wikipedia does, so if you want to learn more, you should check out their [article about color blindness](#).

Dichromacy



Original Color

54.5235, 0.3409, 0.3245

Protanopia

54.6658, 0.3160, 0.3278

Deuteranopia

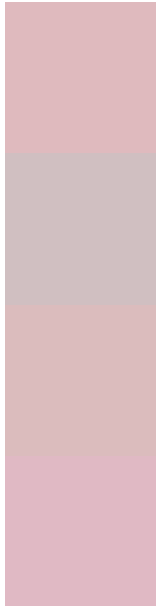
54.6682, 0.3353, 0.3291



Tritanopia

54.6687, 0.3345, 0.3132

Trichromacy



Original Color

54.5235, 0.3409, 0.3245

Protanomaly

54.5218, 0.3251, 0.3267

Deuteranomaly

54.7006, 0.3380, 0.3279

Tritanomaly

54.5307, 0.3370, 0.3165

Monochromacy



Original Color

54.5235, 0.3409, 0.3245

Achromatopsia

56.4712, 0.3127, 0.3290

Achromatomaly

55.7891, 0.3225, 0.3278

CSS Examples

Text

The CSS property to change the color of the text to Yxy 54.5235, 0.3409, 0.3245 is called "color". The color property can be set on classes, ids or directly on the HTML element.

This example shows how text in the color `rgb(223, 186, 190)` looks like.

```
.text, #text, p{  
    color:rgb(223, 186, 190)  
}
```

If you want to add a text shadow in that color use the text-shadow property, you can generate a text shadow directly with our [CSS Text Shadow Generator](#).

Here you see how black text with a 4 pixel rgb(223, 186, 190) colored shadow looks like.

```
.shadow{ text-shadow: 4px 4px 2px rgb(223, 186, 190) }
```

Border

The CSS property to change the border of an element to Yxy 54.5235, 0.3409, 0.3245 is called "border". The border property can be set on classes, ids or directly on the HTML element.

This example shows the color as border, it can be applied via the CSS property "border" or "border-color".

```
.border, #border, table{ border:4px solid rgb(223, 186, 190) }
```

If only the border color should be changed use the property `border-color`.

```
.border{ border-color:rgb(223, 186, 190) }
```

If you want to add a box shadow in that color use:

Here you see how a box with a 4 pixel `rgb(223, 186, 190)` colored shadow looks like.

```
.boxshadow{ -moz-box-shadow:4px 4px 4px  
4px rgb(223, 186, 190); -webkit-box-  
shadow:4px 4px 4px 4px rgb(223, 186, 190);  
box-shadow:4px 4px 4px 4px rgb(223, 186,  
190) }
```


Background

The CSS property to change the background color of an element to Yxy 54.5235, 0.3409, 0.3245 is called "background". The background property can be set on classes, ids or directly on the HTML element.

```
.background, #background, body{  
background: rgb(223, 186, 190) }
```

If only the background color should be changed can be used:

```
.background{ background-color: rgb(223,  
186, 190) }
```

This example shows the color as background, it is applied via the CSS property "background".

To optimize and compress your CSS code, you can use our [online CSS compressor and optimizer](#) based on csstidy. If you want to create a linear or radial gradient as background or border, check our [CSS Gradient Generator](#).

Hey! You found this booklet interesting? Support Converting Colors with the new Membership Option!

The pro membership hides all ads, plus gives you double the colors in the color bucket, and more awesome pro features!

[Learn more, Memberships starting at \\$2.50/m!](#)

**Follow me
on Twitter!**

@ConvertingColor