

# Converting Colors

$Yxy(54.5555, 0.3423, 0.3296)$

Have a look what the booklet for  
Yxy(54.5555, 0.3423, 0.3296)  
contains.

<b>Yxy(54.5007, 0.3415, 0.3291)</b> .....	3
<b>Conversions</b> .....	4
<b>Details</b> .....	6
<b>Harmonies</b> .....	12
<b>Previews</b> .....	24
<b>Color Blindness Simulation</b> .....	27
<b>CSS Examples</b> .....	30

# **Color**

**Yxy(54.5007, 0.3415, 0.3291)**

# Conversions

## Conversions Part 1

Format	Color
Hex	DDBBBB
RGB	221, 187, 187
RGB Percent	87%, 73%, 73%
CMY	0.1334, 0.2666, 0.2667
CMYK	0.00, 0.15, 0.15, 0.13
HSL	0°, 33%, 80%
HSV	0°, 15%, 87%
XYZ	56.5542, 54.5007, 54.5504
YIQ	197.1660, 20.2640, 7.2080

# Conversions

## Conversions Part 2

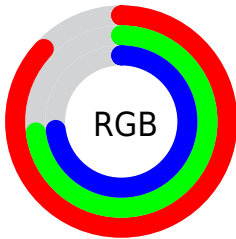
<b>Format</b>	<b>Color</b>
R <sub>Y</sub> B	221, 187, 187
Decimal	14531515
CIE Lab	78.75, 12.13, 4.52
CIE LCh	79, 12.943, 20.445
Yxy	54.5007, 0.3415, 0.3291
Android (android.graphics.Color)	4292721595 (0xFFDDBBBB)
YUV	197.1660, -5.0118, 20.9024
Hunter-Lab	73.8246, 7.5490, 7.8667

# Details

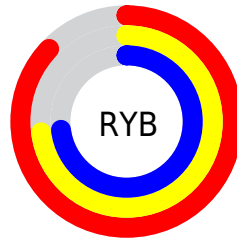
The Yxy color  $54.5007, 0.3415, 0.3291$  is a light color, and the websafe version is hex `FFCCCC`. A complement of this color would be  $67.4792, 0.2895, 0.3289$ , and the grayscale version is  $55.9623, 0.3127, 0.3290$ .

A 20% lighter version of the original color is  $91.8322, 0.3206, 0.3290$ , and  $26.8784, 0.3496, 0.3291$  is the 20% darker color. If you saturate the color by 10%, you get  $44.9654, 0.3663, 0.3292$ , and if you desaturate by 10%, it is  $65.6280, 0.3217, 0.3290$ .

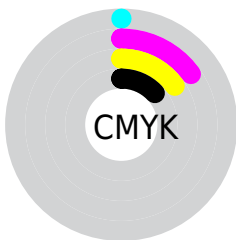
# Distribution



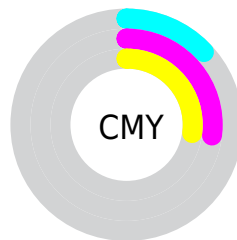
- Red (87%)
- Green (73%)
- Blue (73%)



- Red (87%)
- Yellow (73%)
- Blue (73%)



- Cyan (0%)
- Magenta (15%)
- Yellow (15%)
- Black (13%)




- Cyan (13%)
- Magenta (27%)
- Yellow (27%)

# Brightness & Saturation Gradients

These gradients show how the Yxy color 54.5007, 0.3415, 0.3291 changes by changing the brightness by 10 percent. The first figure shows a shift by +10% for each color and the second figure -10%.


Similar to the brightness gradients but the following saturation gradients show a change of the Yxy color 54.5007, 0.3415, 0.3291 by changing the saturation by 10% instead.





 54.5007, 0.3415,  
0.3291

 54.5007, 0.3415,  
0.3291


404.0165, 0.3274,  
0.3292

 39.0021, 0.3449,  
0.3290


 96.8090, 0.3364,  
0.3292

 26.7614, 0.3493,  
0.3289


124.3875, 0.3345,  
0.3292

 17.3941, 0.3550,  
0.3288


156.7615, 0.3329,  
0.3292

 10.5159, 0.3628,  
0.3285


194.3152, 0.3315,  
0.3292

 5.7423, 0.3742,  
0.3279

237.4332, 0.3303,  
0.3292

 2.6890, 0.3922,  
0.3267

286.4998, 0.3292,

 0.9716, 0.4272,

0.3292

341.8994, 0.3283,  
0.3292

0.3254

0.0000, 1.0000,  
0.0000

0.0000, 0.0000,  
0.0000

54.5007, 0.3415,  
0.3291

54.5007, 0.3415,  
0.3291

44.9654, 0.3663,  
0.3292

65.6280, 0.3217,  
0.3290

36.9424, 0.3971,  
0.3293

78.4075, 0.3058,  
0.3290

30.3562, 0.4346,  
0.3294

92.9055, 0.2932,  
0.3289

25.1221, 0.4785,  
0.3296

94.1093, 0.2923,  
0.3289

■ 21.1463, 0.5264,  
0.3297

■ 18.3231, 0.5730,  
0.3298

■ 16.5298, 0.6109,  
0.3299

■ 15.6155, 0.6335,  
0.3300

■ 15.3715, 0.6400,  
0.3300

# Harmonies

## Analogous

The Analogous color harmony consists of three colors that are next to each other on the color wheel.



54.5007, 0.3283, 0.3150



54.5007, 0.3415, 0.3291



54.5007, 0.3467, 0.3436

# Triad

The Triadic color harmony groups three colors that are evenly spaced from another and form a triangle on the color wheel.



54.5007, 0.3415, 0.3291



54.5007, 0.3135, 0.3553



54.5007, 0.2835, 0.3030

# Complementary

The Complementary color scheme is a pair of colors which are on the opposite of each other on the color wheel.



54.5007, 0.3415, 0.3291



67.4792, 0.2895, 0.3289

# Split Complementary

Split-complementary colors differ from the complementary color scheme. The scheme consists of three colors, the original color and two neighbors of the complement color.



54.5007, 0.2798, 0.3130



54.5007, 0.3415, 0.3291



54.5007, 0.2969, 0.3436

# Square

The Square scheme is like the rectangle color scheme, but the four colors are evenly spaced on the color wheel.



54.5007, 0.3415, 0.3291



54.5007, 0.3303, 0.3593



54.5007, 0.2847, 0.3279



54.5007, 0.2948, 0.3001



# Rectangle

The Rectangle color scheme consists of four colors that form a rectangle on the color wheel.



54.5007, 0.3415, 0.3291



54.5007, 0.3450, 0.3516



54.5007, 0.2847, 0.3279



54.5007, 0.2813, 0.3056

# Sweetspot

The Sweet Spot groups the original color and five complimentary colors.



54.5031, 0.3415, 0.3291



91.3425, 0.3211, 0.3290



56.1283, 0.3145, 0.2911



19.3007, 0.3223, 0.3290



0.0000, 0.0000, 0.0000



21.4041, 0.3127, 0.3290



# Same Dimension

The Same Dimension uses a secret algorithm to generate beautiful new colors.



54.5031, 0.3415, 0.3291



71.5287, 0.3478, 0.3291



62.1379, 0.3385, 0.3484



13.0525, 0.3292, 0.3291



8.9316, 0.6400, 0.3300



0.5790, 0.6399, 0.3301

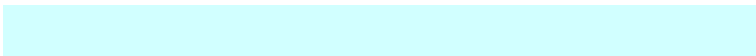


# Inverse Universe

The Inverse Universe completely reimagines the original color for something new.



67.4792, 0.2895, 0.3289



92.2965, 0.2855, 0.3289



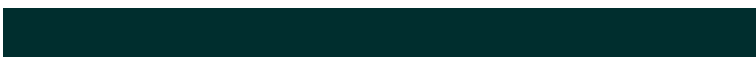
58.9648, 0.2887, 0.3088



14.8285, 0.2982, 0.3289



33.0430, 0.2246, 0.3286

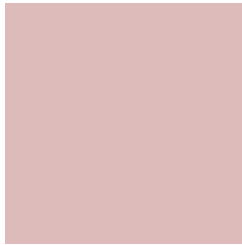


2.1410, 0.2246, 0.3286



# Previews

## White Background



This preview shows how the Yxy color 54.5007, 0.3415, 0.3291 looks on a white background.

## Color Contrast Check

Large Text (above 18pt) WCAG AA × Fail

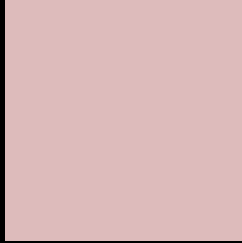
Any Text WCAG AA × Fail

Large Text (above 18pt) WCAG AAA × Fail

Any Text WCAG AAA × Fail



# Black Background



This preview shows how the Yxy color 54.5007, 0.3415, 0.3291 looks on a black background.

## Color Contrast Check

Large Text (above 18pt) WCAG AA ✓ Pass

Any Text WCAG AA ✓ Pass

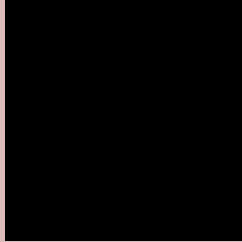
Large Text (above 18pt) WCAG AAA ✓ Pass

Any Text WCAG AAA ✓ Pass

If you want to check with other color combinations, try the [Color Contrast Checker](#).

**Yxy 54.5007, 0.3415, 0.3291**

## **Background**



This preview shows how black text looks on a background with the Yxy color 54.5007, 0.3415, 0.3291.



This preview shows how white text looks on a background with the Yxy color 54.5007, 0.3415, 0.3291.

# Color Blindness Simulation

Color vision deficiency is a very complex topic, and I could not describe the different causes any better than Wikipedia does, so if you want to learn more, you should check out their [article about color blindness](#).

## Dichromacy



### Original Color

54.5007, 0.3415, 0.3291

### Protanopia

54.4873, 0.3190, 0.3327

### Deuteranopia

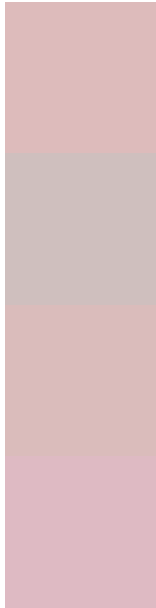
54.7348, 0.3378, 0.3314



## Tritanopia

54.5094, 0.3337, 0.3131

# Trichromacy



## Original Color

54.5007, 0.3415, 0.3291

## Protanomaly

54.2447, 0.3267, 0.3302

## Deuteranomaly

54.4597, 0.3388, 0.3302

## Tritanomaly

54.5875, 0.3360, 0.3188

# Monochromacy



## Original Color

54.5007, 0.3415, 0.3291

## Achromatopsia

55.8340, 0.3127, 0.3290

## Achromatomaly

55.1120, 0.3233, 0.3290

# CSS Examples

## Text

The CSS property to change the color of the text to Yxy 54.5007, 0.3415, 0.3291 is called "color". The color property can be set on classes, ids or directly on the HTML element.

This example shows how text in the color `rgb(221, 187, 187)` looks like.

```
.text, #text, p{  
    color:rgb(221, 187, 187)  
}
```

If you want to add a text shadow in that color use the text-shadow property, you can generate a text shadow directly with our [CSS Text Shadow Generator](#).

Here you see how black text with a 4 pixel rgb(221, 187, 187) colored shadow looks like.

```
.shadow{ text-shadow: 4px 4px 2px rgb(221, 187, 187) }
```

## Border

The CSS property to change the border of an element to Yxy 54.5007, 0.3415, 0.3291 is called "border". The border property can be set on classes, ids or directly on the HTML element.

This example shows the color as border, it can be applied via the CSS property "border" or "border-color".

```
.border, #border, table{ border:4px solid rgb(221, 187, 187) }
```

If only the border color should be changed use the property `border-color`.

```
.border{ border-color:rgb(221, 187, 187) }
```

If you want to add a box shadow in that color use:

Here you see how a box with a 4 pixel `rgb(221, 187, 187)` colored shadow looks like.

```
.boxshadow{ -moz-box-shadow:4px 4px 4px  
4px rgb(221, 187, 187); -webkit-box-  
shadow:4px 4px 4px 4px rgb(221, 187, 187);  
box-shadow:4px 4px 4px 4px rgb(221, 187,  
187) }
```



# Background

The CSS property to change the background color of an element to Yxy 54.5007, 0.3415, 0.3291 is called "background". The background property can be set on classes, ids or directly on the HTML element.

```
.background, #background, body{  
background: rgb(221, 187, 187) }
```

If only the background color should be changed can be used:

```
.background{ background-color: rgb(221,  
187, 187) }
```

This example shows the color as background, it is applied via the CSS property "background".

To optimize and compress your CSS code, you can use our [online CSS compressor and optimizer](#) based on csstidy. If you want to create a linear or radial gradient as background or border, check our [CSS Gradient Generator](#).

Hey! You found this booklet interesting? Support Converting Colors with the new Membership Option!

The pro membership hides all ads, plus gives you double the colors in the color bucket, and more awesome pro features!

**[Learn more, Memberships starting at \\$2.50/m!](#)**

**Follow me  
on Twitter!**

@ConvertingColor