

Converting Colors

Yxy(54.5872, 0.3363, 0.3291)

Have a look what the booklet for
Yxy(54.5872, 0.3363, 0.3291)
contains.

Yxy(54.8210, 0.3361, 0.3291)	3
Conversions	4
Details	6
Harmonies	12
Previews	24
Color Blindness Simulation	27
CSS Examples	30

Color

Yxy(54.8210, 0.3361, 0.3291)

Conversions

Conversions Part 1

Format	Color
Hex	D9BDBD
RGB	217, 189, 189
RGB Percent	85%, 74%, 74%
CMY	0.1492, 0.2587, 0.2588
CMYK	0.00, 0.13, 0.13, 0.15
HSL	0°, 27%, 80%
HSV	0°, 13%, 85%
XYZ	55.9870, 54.8210, 55.7705
YIQ	197.3720, 16.6880, 5.9360

Conversions

Conversions Part 2

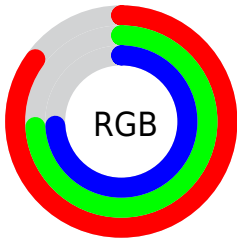
Format	Color
R _Y B	217, 189, 189
Decimal	14269885
CIE Lab	78.94, 9.92, 3.66
CIE LCh	79, 10.574, 20.279
Yxy	54.8210, 0.3361, 0.3291
Android (android.graphics.Color)	4292459965 (0xFFD9BDBD)
YUV	197.3720, -4.1274, 17.2138
Hunter-Lab	74.0412, 5.4026, 7.1695

Details

The Yxy color **54.8210, 0.3361, 0.3291** is a light color, and the websafe version is hex **CCCCCC**. A complement of this color would be **65.4121, 0.2931, 0.3289**, and the grayscale version is **56.0876, 0.3127, 0.3290**.

A 20% lighter version of the original color is **93.1574, 0.3192, 0.3290**, and **27.0673, 0.3422, 0.3291** is the 20% darker color. If you saturate the color by 10%, you get **45.3115, 0.3595, 0.3292**, and if you desaturate by 10%, it is **65.8696, 0.3174, 0.3290**.

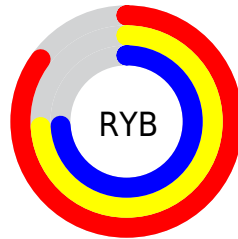
Distribution



Red (85%)

Green (74%)

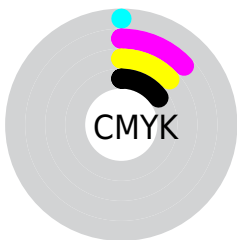
Blue (74%)



Red (85%)

Yellow (74%)

Blue (74%)

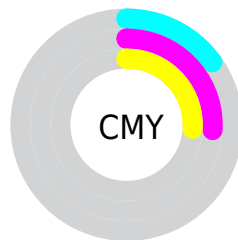


Cyan (0%)

Magenta (13%)

Yellow (13%)

Black (15%)



Cyan (15%)


Magenta (26%)


Yellow (26%)

Brightness & Saturation Gradients

These gradients show how the Yxy color 54.8210, 0.3361, 0.3291 changes by changing the brightness by 10 percent. The first figure shows a shift by +10% for each color and the second figure -10%.


Similar to the brightness gradients but the following saturation gradients show a change of the Yxy color 54.8210, 0.3361, 0.3291 by changing the saturation by 10% instead.


 54.8210, 0.3361,
0.3291

 54.8210, 0.3361,
0.3291


405.2330, 0.3247,
0.3292

 39.2584, 0.3389,
0.3291

 97.2786, 0.3320,
0.3291

 26.9608, 0.3424,
0.3290


124.9425, 0.3305,
0.3291

 17.5438, 0.3470,
0.3289


157.4089, 0.3291,
0.3292

 10.6230, 0.3533,
0.3287

195.0623, 0.3280,
0.3292

 5.8139, 0.3625,
0.3283

238.2870, 0.3270,
0.3292

 2.7323, 0.3770,
0.3276

287.4674, 0.3261,

 0.9936, 0.4041,

0.3292

342.9880, 0.3254,
0.3292

0.3263

0.0000, 1.0000,
0.0000

0.0000, 0.0000,
0.0000

54.8210, 0.3361,
0.3291

54.8210, 0.3361,
0.3291

45.3115, 0.3595,
0.3292

65.8696, 0.3174,
0.3290

37.2659, 0.3887,
0.3293

78.5136, 0.3024,
0.3290

30.6139, 0.4245,
0.3294

92.8153, 0.2904,
0.3289

25.2761, 0.4668,
0.3296

93.4846, 0.2900,
0.3289

■ 21.1657, 0.5139,
0.3297

■ 18.1850, 0.5614,
0.3299

■ 16.2216, 0.6023,
0.3300

■ 15.1403, 0.6293,
0.3300

■ 14.7495, 0.6400,
0.3300

Harmonies

Analogous

The Analogous color harmony consists of three colors that are next to each other on the color wheel.



54.8210, 0.3254, 0.3175



54.8210, 0.3361, 0.3291



54.8210, 0.3404, 0.3410

Triad

The Triadic color harmony groups three colors that are evenly spaced from another and form a triangle on the color wheel.



54.8210, 0.3361, 0.3291



54.8210, 0.3135, 0.3503



54.8210, 0.2888, 0.3078

Complementary

The Complementary color scheme is a pair of colors which are on the opposite of each other on the color wheel.



54.8210, 0.3361, 0.3291



65.4121, 0.2931, 0.3289

Split Complementary

Split-complementary colors differ from the complementary color scheme. The scheme consists of three colors, the original color and two neighbors of the complement color.



54.8210, 0.2858, 0.3161



54.8210, 0.3361, 0.3291



54.8210, 0.2999, 0.3409

Square

The Square scheme is like the rectangle color scheme, but the four colors are evenly spaced on the color wheel.



54.8210, 0.3361, 0.3291



54.8210, 0.3272, 0.3536



54.8210, 0.2898, 0.3282



54.8210, 0.2981, 0.3053

Rectangle

The Rectangle color scheme consists of four colors that form a rectangle on the color wheel.



54.8210, 0.3361, 0.3291



54.8210, 0.3390, 0.3475



54.8210, 0.2898, 0.3282



54.8210, 0.2870, 0.3100

Sweetspot

The Sweet Spot groups the original color and five complimentary colors.



54.8234, 0.3361, 0.3291



93.0306, 0.3193, 0.3290



56.1444, 0.3142, 0.2974



19.6408, 0.3206, 0.3290



0.0000, 0.0000, 0.0000



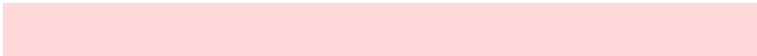
21.4041, 0.3127, 0.3290

Same Dimension

The Same Dimension uses a secret algorithm to generate beautiful new colors.



54.8234, 0.3361, 0.3291



75.7741, 0.3409, 0.3291



61.1179, 0.3340, 0.3452



13.0537, 0.3292, 0.3291



8.9338, 0.6400, 0.3300



0.5796, 0.6397, 0.3302

Inverse Universe

The Inverse Universe completely reimagines the original color for something new.



65.4121, 0.2931, 0.3289



93.4281, 0.2899, 0.3289



58.5248, 0.2927, 0.3123



14.8272, 0.2982, 0.3289



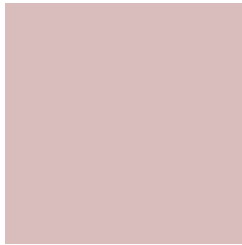
33.0043, 0.2246, 0.3284



2.1389, 0.2246, 0.3285

Previews

White Background



This preview shows how the Yxy color 54.8210, 0.3361, 0.3291 looks on a white background.

Color Contrast Check

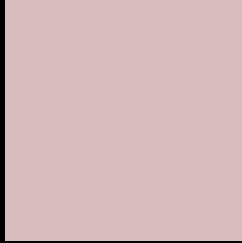
Large Text (above 18pt) WCAG AA × Fail

Any Text WCAG AA × Fail

Large Text (above 18pt) WCAG AAA × Fail

Any Text WCAG AAA × Fail

Black Background



This preview shows how the Yxy color 54.8210, 0.3361, 0.3291 looks on a black background.

Color Contrast Check

Large Text (above 18pt) WCAG AA ✓ Pass

Any Text WCAG AA ✓ Pass

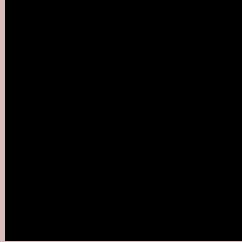
Large Text (above 18pt) WCAG AAA ✓ Pass

Any Text WCAG AAA ✓ Pass

If you want to check with other color combinations, try the [Color Contrast Checker](#).

Yxy 54.8210, 0.3361, 0.3291

Background



This preview shows how black text looks on a background with the Yxy color 54.8210, 0.3361, 0.3291.



This preview shows how white text looks on a background with the Yxy color 54.8210, 0.3361, 0.3291.

Color Blindness Simulation

Color vision deficiency is a very complex topic, and I could not describe the different causes any better than Wikipedia does, so if you want to learn more, you should check out their [article about color blindness](#).

Dichromacy



Original Color

54.8210, 0.3361, 0.3291

Protanopia

55.1153, 0.3190, 0.3326

Deuteranopia

54.8210, 0.3361, 0.3291



Tritanopia

54.8650, 0.3276, 0.3118

Trichromacy



Original Color

54.8210, 0.3361, 0.3291

Protanomaly

55.0233, 0.3248, 0.3314

Deuteranomaly

54.8210, 0.3361, 0.3291

Tritanomaly

54.9031, 0.3307, 0.3187

Monochromacy



Original Color

54.8210, 0.3361, 0.3291

Achromatopsia

55.8340, 0.3127, 0.3290

Achromatomaly

55.3160, 0.3208, 0.3290

CSS Examples

Text

The CSS property to change the color of the text to Yxy 54.8210, 0.3361, 0.3291 is called "color". The color property can be set on classes, ids or directly on the HTML element.

This example shows how text in the color `rgb(217, 189, 189)` looks like.

```
.text, #text, p{  
    color:rgb(217, 189, 189)  
}
```

If you want to add a text shadow in that color use the text-shadow property, you can generate a text shadow directly with our [CSS Text Shadow Generator](#).

Here you see how black text with a 4 pixel rgb(217, 189, 189) colored shadow looks like.

```
.shadow{ text-shadow: 4px 4px 2px rgb(217, 189, 189) }
```

Border

The CSS property to change the border of an element to Yxy 54.8210, 0.3361, 0.3291 is called "border". The border property can be set on classes, ids or directly on the HTML element.

This example shows the color as border, it can be applied via the CSS property "border" or "border-color".

```
.border, #border, table{ border:4px solid rgb(217, 189, 189) }
```

If only the border color should be changed use the property `border-color`.

```
.border{ border-color:rgb(217, 189, 189) }
```

If you want to add a box shadow in that color use:

Here you see how a box with a 4 pixel `rgb(217, 189, 189)` colored shadow looks like.

```
.boxshadow{ -moz-box-shadow:4px 4px 4px  
4px rgb(217, 189, 189); -webkit-box-  
shadow:4px 4px 4px 4px rgb(217, 189, 189);  
box-shadow:4px 4px 4px 4px rgb(217, 189,  
189) }
```


Background

The CSS property to change the background color of an element to Yxy 54.8210, 0.3361, 0.3291 is called "background". The background property can be set on classes, ids or directly on the HTML element.

```
.background, #background, body{  
background: rgb(217, 189, 189) }
```

If only the background color should be changed can be used:

```
.background{ background-color: rgb(217,  
189, 189) }
```

This example shows the color as background, it is applied via the CSS property "background".

To optimize and compress your CSS code, you can use our [online CSS compressor and optimizer](#) based on csstidy. If you want to create a linear or radial gradient as background or border, check our [CSS Gradient Generator](#).

Hey! You found this booklet interesting? Support Converting Colors with the new Membership Option!

The pro membership hides all ads, plus gives you double the colors in the color bucket, and more awesome pro features!

[Learn more, Memberships starting at \\$2.50/m!](#)

**Follow me
on Twitter!**

@ConvertingColor