

Converting Colors

Yxy(54.8233, 0.3294, 0.3255)

Have a look what the booklet for
Yxy(54.8233, 0.3294, 0.3255)
contains.

| | |
|---|----|
| Yxy(54.8233, 0.3294, 0.3255) | 3 |
| Conversions | 4 |
| Details | 6 |
| Harmonies | 12 |
| Previews | 24 |
| Color Blindness Simulation | 27 |
| CSS Examples | 30 |

Color

Yxy(54.8233, 0.3294, 0.3255)

Conversions

Conversions Part 1

| Format | Color |
|-------------|---------------------------|
| Hex | D5BEC1 |
| RGB | 213, 190, 193 |
| RGB Percent | 84%, 75%, 76% |
| CMY | 0.1647, 0.2549, 0.2430 |
| CMYK | 0.00, 0.11, 0.09, 0.16 |
| HSL | 352°, 21%, 79% |
| HSV | 352°, 11%, 84% |
| XYZ | 55.4802, 54.8233, 58.1245 |
| YIQ | 197.2190, 12.7450, 5.8090 |

Conversions

Conversions Part 2

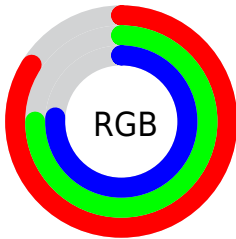
| Format | Color |
|-------------------------------------|-------------------------------|
| R _Y B | 213, 190, 193 |
| Decimal | 14008001 |
| CIE Lab | 78.94, 8.64, 1.45 |
| CIE LCh | 79, 8.764, 9.501 |
| Yxy | 54.8233, 0.3294, 0.3255 |
| Android (android.graphics.Color) | 4292198081 (0xFFD5BEC1) |
| YUV | 197.2190, -2.0800, 13.8399 |
| Hunter-Lab | 74.0428, 4.1751, 5.2865 |

Details

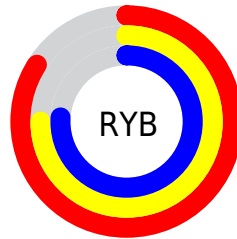
The Yxy color **54.8233, 0.3294, 0.3255** is a light color, and the websafe version is hex **CCCCCC**. A complement of this color would be **63.1845, 0.2982, 0.3325**, and the grayscale version is **55.9827, 0.3127, 0.3290**.

A 20% lighter version of the original color is **94.0111, 0.3167, 0.3261**, and **27.0539, 0.3331, 0.3244** is the 20% darker color. If you saturate the color by 10%, you get **45.4883, 0.3488, 0.3220**, and if you desaturate by 10%, it is **65.6147, 0.3138, 0.3288**.

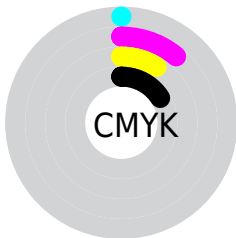
Distribution



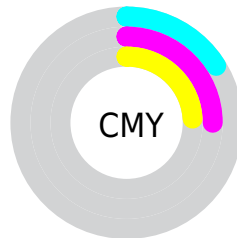
- Red (84%)
- Green (75%)
- Blue (76%)



- Red (84%)
- Yellow (75%)
- Blue (76%)



- Cyan (0%)
- Magenta (11%)
- Yellow (9%)
- Black (16%)





- Cyan (16%)
- Magenta (25%)
- Yellow (24%)

Brightness & Saturation Gradients


These gradients show how the Yxy color 54.8233, 0.3294, 0.3255 changes by changing the brightness by 10 percent. The first figure shows a shift by +10% for each color and the second figure -10%.


Similar to the brightness gradients but the following saturation gradients show a change of the Yxy color 54.8233, 0.3294, 0.3255 by changing the saturation by 10% instead.


 54.8233, 0.3294,
0.3255

 54.8233, 0.3294,
0.3255


405.2418, 0.3213,
0.3272

 39.2603, 0.3314,
0.3251

 97.2820, 0.3265,
0.3261

 26.9623, 0.3339,
0.3245


124.9465, 0.3254,
0.3264

 17.5449, 0.3372,
0.3238


157.4136, 0.3244,
0.3266

 10.6237, 0.3416,
0.3228

195.0676, 0.3236,
0.3267

 5.8144, 0.3481,
0.3213

238.2931, 0.3229,
0.3269

 2.7326, 0.3583,
0.3189

287.4743, 0.3223,

 0.9938, 0.3768,

0.3270

0.3143

342.9958, 0.3218,
0.3271

0.0000, 1.0000,
0.0000

0.0000, 0.0000,
0.0000

54.8233, 0.3294,
0.3255

54.8233, 0.3294,
0.3255

45.4883, 0.3488,
0.3220

65.6147, 0.3138,
0.3288

37.5404, 0.3728,
0.3185

77.9136, 0.3013,
0.3317

30.9155, 0.4022,
0.3150

91.7773, 0.2911,
0.3345

25.5417, 0.4374,
0.3121

92.8851, 0.2877,
0.3289

■ 21.3400, 0.4781,
0.3101

■ 18.2227, 0.5220,
0.3099

■ 16.0895, 0.5650,
0.3119

■ 14.8214, 0.6011,
0.3164

■ 14.2289, 0.6246,
0.3215

Harmonies

Analogous

The Analogous color harmony consists of three colors that are next to each other on the color wheel.



54.8233, 0.3192, 0.3164



54.8233, 0.3294, 0.3255



54.8233, 0.3351, 0.3356

Triad

The Triadic color harmony groups three colors that are evenly spaced from another and form a triangle on the color wheel.



54.8233, 0.3294, 0.3255



54.8233, 0.3177, 0.3482



54.8233, 0.2913, 0.3135

Complementary

The Complementary color scheme is a pair of colors which are on the opposite of each other on the color wheel.



54.8233, 0.3294, 0.3255



63.1845, 0.2982, 0.3325

Split Complementary

Split-complementary colors differ from the complementary color scheme. The scheme consists of three colors, the original color and two neighbors of the complement color.



54.8233, 0.2909, 0.3217



54.8233, 0.3294, 0.3255



54.8233, 0.3060, 0.3421

Square

The Square scheme is like the rectangle color scheme, but the four colors are evenly spaced on the color wheel.



54.8233, 0.3294, 0.3255



54.8233, 0.3282, 0.3490



54.8233, 0.2962, 0.3323



54.8233, 0.2973, 0.3095

Rectangle

The Rectangle color scheme consists of four colors that form a rectangle on the color wheel.



54.8233, 0.3294, 0.3255



54.8233, 0.3355, 0.3417



54.8233, 0.2962, 0.3323



54.8233, 0.2905, 0.3158

Sweetspot

The Sweet Spot groups the original color and five complimentary colors.



54.8257, 0.3294, 0.3255



94.7952, 0.3170, 0.3280



55.3240, 0.3115, 0.3024



19.9998, 0.3182, 0.3278



0.0000, 0.0000, 0.0000



21.4041, 0.3127, 0.3290

Same Dimension

The Same Dimension uses a secret algorithm to generate beautiful new colors.



54.8257, 0.3294, 0.3255



78.9252, 0.3336, 0.3247



58.4499, 0.3306, 0.3389



12.4471, 0.3271, 0.3260



8.7008, 0.6221, 0.3201



0.5337, 0.5830, 0.2985

Inverse Universe

The Inverse Universe completely reimagines the original color for something new.



54.8257, 0.3294, 0.3255



78.9252, 0.3336, 0.3247



59.2060, 0.2961, 0.3189



12.4471, 0.3271, 0.3260



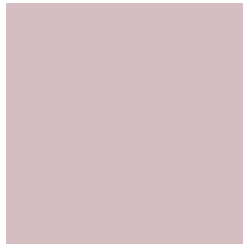
8.7008, 0.6221, 0.3201



0.5337, 0.5830, 0.2985

Previews

White Background



This preview shows how the Yxy color 54.8233, 0.3294, 0.3255 looks on a white background.

Color Contrast Check

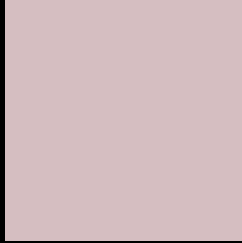
Large Text (above 18pt) WCAG AA × Fail

Any Text WCAG AA × Fail

Large Text (above 18pt) WCAG AAA × Fail

Any Text WCAG AAA × Fail

Black Background



This preview shows how the Yxy color 54.8233, 0.3294, 0.3255 looks on a black background.

Color Contrast Check

Large Text (above 18pt) WCAG AA ✓ Pass

Any Text WCAG AA ✓ Pass

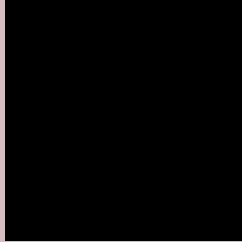
Large Text (above 18pt) WCAG AAA ✓ Pass

Any Text WCAG AAA ✓ Pass

If you want to check with other color combinations, try the [Color Contrast Checker](#).

Yxy 54.8233, 0.3294, 0.3255

Background



This preview shows how black text looks on a background with the Yxy color 54.8233, 0.3294, 0.3255.



This preview shows how white text looks on a background with the Yxy color 54.8233, 0.3294, 0.3255.

Color Blindness Simulation

Color vision deficiency is a very complex topic, and I could not describe the different causes any better than Wikipedia does, so if you want to learn more, you should check out their [article about color blindness](#).

Dichromacy



Original Color

54.8233, 0.3294, 0.3255

Protanopia

55.1578, 0.3152, 0.3278

Deuteranopia

54.6925, 0.3312, 0.3244



Tritanopia

54.5744, 0.3226, 0.3116

Trichromacy



Original Color

54.8233, 0.3294, 0.3255

Protanomaly

54.9174, 0.3201, 0.3266

Deuteranomaly

54.5416, 0.3304, 0.3244

Tritanomaly

54.8149, 0.3256, 0.3174

Monochromacy



Original Color

54.8233, 0.3294, 0.3255

Achromatopsia

55.8340, 0.3127, 0.3290

Achromatomaly

55.2656, 0.3185, 0.3266

CSS Examples

Text

The CSS property to change the color of the text to Yxy 54.8233, 0.3294, 0.3255 is called "color". The color property can be set on classes, ids or directly on the HTML element.

This example shows how text in the color `rgb(213, 190, 193)` looks like.

```
.text, #text, p{  
    color:rgb(213, 190, 193)  
}
```

If you want to add a text shadow in that color use the text-shadow property, you can generate a text shadow directly with our [CSS Text Shadow Generator](#).

Here you see how black text with a 4 pixel rgb(213, 190, 193) colored shadow looks like.

```
.shadow{ text-shadow: 4px 4px 2px rgb(213, 190, 193) }
```

Border

The CSS property to change the border of an element to Yxy 54.8233, 0.3294, 0.3255 is called "border". The border property can be set on classes, ids or directly on the HTML element.

This example shows the color as border, it can be applied via the CSS property "border" or "border-color".

```
.border, #border, table{ border:4px solid rgb(213, 190, 193) }
```

If only the border color should be changed use the property `border-color`.

```
.border{ border-color:rgb(213, 190, 193) }
```

If you want to add a box shadow in that color use:

Here you see how a box with a 4 pixel `rgb(213, 190, 193)` colored shadow looks like.

```
.boxshadow{ -moz-box-shadow:4px 4px 4px 4px rgb(213, 190, 193); -webkit-box-shadow:4px 4px 4px 4px rgb(213, 190, 193); box-shadow:4px 4px 4px 4px rgb(213, 190, 193) }
```


Background

The CSS property to change the background color of an element to Yxy 54.8233, 0.3294, 0.3255 is called "background". The background property can be set on classes, ids or directly on the HTML element.

```
.background, #background, body{  
background: rgb(213, 190, 193) }
```

If only the background color should be changed can be used:

```
.background{ background-color: rgb(213,  
190, 193) }
```

This example shows the color as background, it is applied via the CSS property "background".

To optimize and compress your CSS code, you can use our [online CSS compressor and optimizer](#) based on csstidy. If you want to create a linear or radial gradient as background or border, check our [CSS Gradient Generator](#).

Hey! You found this booklet interesting? Support Converting Colors with the new Membership Option!

The pro membership hides all ads, plus gives you double the colors in the color bucket, and more awesome pro features!

[Learn more, Memberships starting at \\$2.50/m!](#)

**Follow me
on Twitter!**

@ConvertingColor