

Converting Colors

Yxy(54.9272, 0.3335, 0.3422)

Have a look what the booklet for
Yxy(54.9272, 0.3335, 0.3422)
contains.

Yxy(54.9272, 0.3335, 0.3422)	3
Conversions	4
Details	6
Harmonies	12
Previews	24
Color Blindness Simulation	27
CSS Examples	30

Color

Yxy(54.9272, 0.3335, 0.3422)

Conversions

Conversions Part 1

Format	Color
Hex	D0C1B6
RGB	208, 193, 182
RGB Percent	82%, 76%, 71%
CMY	0.1843, 0.2431, 0.2861
CMYK	0.00, 0.07, 0.12, 0.18
HSL	25°, 22%, 76%
HSV	25°, 12%, 82%
XYZ	53.5307, 54.9272, 52.0540
YIQ	196.2310, 12.4710, -0.2410

Conversions

Conversions Part 2

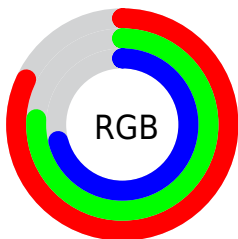
Format	Color
R _Y B	208, 201, 182
Decimal	13681078
CIE Lab	79.00, 3.43, 7.41
CIE LCh	79, 8.164, 65.134
Yxy	54.9272, 0.3335, 0.3422
Android (android.graphics.Color)	4291871158 (0xFFD0C1B6)
YUV	196.2310, -7.0159, 10.3214
Hunter-Lab	74.1129, -0.7694, 10.2360

Details

The Yxy color $54.9272, 0.3335, 0.3422$ is a light color, and the websafe version is hex `CCCCCC`. A complement of this color would be $54.4574, 0.2935, 0.3154$, and the grayscale version is $55.3882, 0.3127, 0.3290$.

A 20% lighter version of the original color is $95.1844, 0.3231, 0.3397$, and $27.1135, 0.3386, 0.3467$ is the 20% darker color. If you saturate the color by 10%, you get $49.0315, 0.3531, 0.3534$, and if you desaturate by 10%, it is $61.3876, 0.3166, 0.3315$.

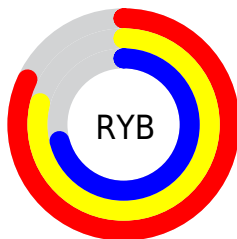
Distribution



Red (82%)

Green (76%)

Blue (71%)



Red (82%)

Yellow (79%)

Blue (71%)

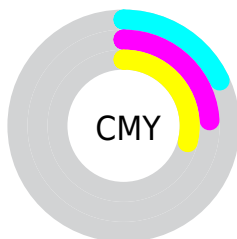


Cyan (0%)

Magenta (7%)

Yellow (12%)

Black (18%)



Cyan (18%)


Magenta (24%)


Yellow (29%)

Brightness & Saturation Gradients

These gradients show how the Yxy color 54.9272, 0.3335, 0.3422 changes by changing the brightness by 10 percent. The first figure shows a shift by +10% for each color and the second figure -10%.


Similar to the brightness gradients but the following saturation gradients show a change of the Yxy color 54.9272, 0.3335, 0.3422 by changing the saturation by 10% instead.

 54.9272, 0.3335,
0.3422

 54.9272, 0.3335,
0.3422


405.6359, 0.3234,
0.3358

 39.3434, 0.3360,
0.3437


 97.4343, 0.3299,
0.3399

 27.0270, 0.3391,
0.3456

125.1264, 0.3285,
0.3391

 17.5935, 0.3432,
0.3481


157.6234, 0.3273,
0.3383

 10.6585, 0.3488,
0.3514

195.3097, 0.3263,
0.3377

 5.8377, 0.3568,
0.3562

238.5697, 0.3254,
0.3372

 2.7467, 0.3695,
0.3634

287.7879, 0.3247,

 1.0009, 0.4000,

0.3367

0.3830

343.3484, 0.3240,
0.3362

■ 0.0000, 0.0000,
0.0000

■ 54.9272, 0.3335,
0.3422

■ 54.9272, 0.3335,
0.3422

■ 49.0315, 0.3531,
0.3534

■ 61.3876, 0.3166,
0.3315

■ 43.6774, 0.3757,
0.3650

■ 68.4205, 0.3020,
0.3216

■ 38.8506, 0.4013,
0.3763

■ 76.0428, 0.2894,
0.3124

■ 34.5336, 0.4296,
0.3867

■ 83.5915, 0.2841,
0.3144

■ 30.7076, 0.4601,
0.3951

■ 90.9482, 0.2848,
0.3270

■ 27.3527, 0.4914,
0.4002

■ 92.1516, 0.2849,
0.3289

■ 24.4469, 0.5213,
0.4009

■ 21.9656, 0.5477,
0.3962

■ 20.3581, 0.5647,
0.3898

Harmonies

Analogous

The Analogous color harmony consists of three colors that are next to each other on the color wheel.



54.9272, 0.3331, 0.3338



54.9272, 0.3335, 0.3422



54.9272, 0.3283, 0.3472

Triad

The Triadic color harmony groups three colors that are evenly spaced from another and form a triangle on the color wheel.



54.9272, 0.3335, 0.3422



54.9272, 0.2985, 0.3335



54.9272, 0.3063, 0.3114

Complementary

The Complementary color scheme is a pair of colors which are on the opposite of each other on the color wheel.



54.9272, 0.3335, 0.3422



54.4574, 0.2935, 0.3154

Split Complementary

Split-complementary colors differ from the complementary color scheme. The scheme consists of three colors, the original color and two neighbors of the complement color.



54.9272, 0.2972, 0.3111



54.9272, 0.3335, 0.3422



54.9272, 0.2928, 0.3236

Square

The Square scheme is like the rectangle color scheme, but the four colors are evenly spaced on the color wheel.



54.9272, 0.3335, 0.3422



54.9272, 0.3080, 0.3423



54.9272, 0.2923, 0.3154



54.9272, 0.3172, 0.3163

Rectangle

The Rectangle color scheme consists of four colors that form a rectangle on the color wheel.



54.9272, 0.3335, 0.3422



54.9272, 0.3223, 0.3479



54.9272, 0.2923, 0.3154



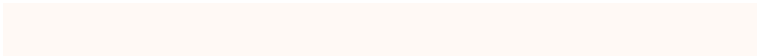
54.9272, 0.3029, 0.3108

Sweetspot

The Sweet Spot groups the original color and five complimentary colors.



54.9296, 0.3335, 0.3422



95.6568, 0.3190, 0.3332



50.9210, 0.3227, 0.3110



20.3032, 0.3203, 0.3340



0.0000, 0.0000, 0.0000



21.4041, 0.3127, 0.3290

Same Dimension

The Same Dimension uses a secret algorithm to generate beautiful new colors.



54.9296, 0.3335, 0.3422



84.4751, 0.3385, 0.3452



60.8591, 0.3316, 0.3572



12.6167, 0.3280, 0.3389



12.8691, 0.5622, 0.3918



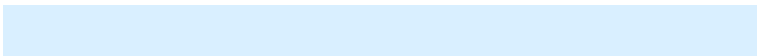
0.8751, 0.5298, 0.4175

Inverse Universe

The Inverse Universe completely reimagines the original color for something new.



54.4574, 0.2935, 0.3154



83.5816, 0.2892, 0.3123



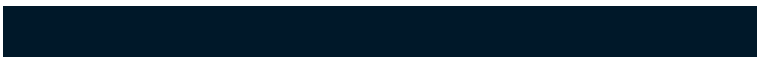
48.8673, 0.2931, 0.2992



12.5361, 0.2983, 0.3189



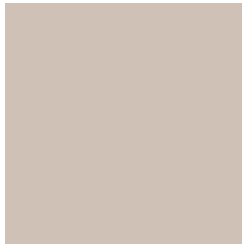
11.4363, 0.1849, 0.1856



0.7947, 0.1929, 0.2145

Previews

White Background



This preview shows how the Yxy color 54.9272, 0.3335, 0.3422 looks on a white background.

Color Contrast Check

Large Text (above 18pt) WCAG AA × Fail

Any Text WCAG AA × Fail

Large Text (above 18pt) WCAG AAA × Fail

Any Text WCAG AAA × Fail

Black Background



This preview shows how the Yxy color 54.9272, 0.3335, 0.3422 looks on a black background.

Color Contrast Check

Large Text (above 18pt) WCAG AA ✓ Pass

Any Text WCAG AA ✓ Pass

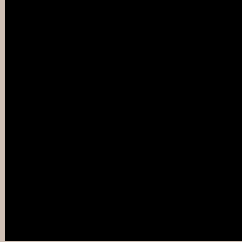
Large Text (above 18pt) WCAG AAA ✓ Pass

Any Text WCAG AAA ✓ Pass

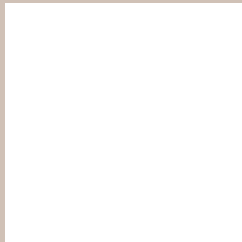
If you want to check with other color combinations, try the [Color Contrast Checker](#).

Yxy 54.9272, 0.3335, 0.3422

Background



This preview shows how black text looks on a background with the Yxy color 54.9272, 0.3335, 0.3422.

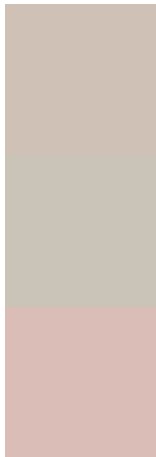


This preview shows how white text looks on a background with the Yxy color 54.9272, 0.3335, 0.3422.

Color Blindness Simulation

Color vision deficiency is a very complex topic, and I could not describe the different causes any better than Wikipedia does, so if you want to learn more, you should check out their [article about color blindness](#).

Dichromacy



Original Color

54.9272, 0.3335, 0.3422

Protanopia

55.0057, 0.3275, 0.3436

Deuteranopia

54.8742, 0.3427, 0.3361



Tritanopia

55.0836, 0.3184, 0.3116

Trichromacy



Original Color

54.9272, 0.3335, 0.3422

Protanomaly

54.8398, 0.3292, 0.3424

Deuteranomaly

54.6929, 0.3391, 0.3373

Tritanomaly

54.9945, 0.3237, 0.3220

Monochromacy



Original Color

54.9272, 0.3335, 0.3422

Achromatopsia

55.2011, 0.3127, 0.3290

Achromatomaly

55.0712, 0.3197, 0.3339

CSS Examples

Text

The CSS property to change the color of the text to Yxy 54.9272, 0.3335, 0.3422 is called "color". The color property can be set on classes, ids or directly on the HTML element.

This example shows how text in the color `rgb(208, 193, 182)` looks like.

```
.text, #text, p{  
    color:rgb(208, 193, 182)  
}
```

If you want to add a text shadow in that color use the text-shadow property, you can generate a text shadow directly with our [CSS Text Shadow Generator](#).

Here you see how black text with a 4 pixel rgb(208, 193, 182) colored shadow looks like.

```
.shadow{ text-shadow: 4px 4px 2px rgb(208, 193, 182) }
```

Border

The CSS property to change the border of an element to Yxy 54.9272, 0.3335, 0.3422 is called "border". The border property can be set on classes, ids or directly on the HTML element.

This example shows the color as border, it can be applied via the CSS property "border" or "border-color".

```
.border, #border, table{ border:4px solid rgb(208, 193, 182) }
```

If only the border color should be changed use the property `border-color`.

```
.border{ border-color:rgb(208, 193, 182) }
```

If you want to add a box shadow in that color use:

Here you see how a box with a 4 pixel `rgb(208, 193, 182)` colored shadow looks like.

```
.boxshadow{ -moz-box-shadow:4px 4px 4px  
4px rgb(208, 193, 182); -webkit-box-  
shadow:4px 4px 4px 4px rgb(208, 193, 182);  
box-shadow:4px 4px 4px 4px rgb(208, 193,  
182) }
```


Background

The CSS property to change the background color of an element to Yxy 54.9272, 0.3335, 0.3422 is called "background". The background property can be set on classes, ids or directly on the HTML element.

```
.background, #background, body{  
background: rgb(208, 193, 182) }
```

If only the background color should be changed can be used:

```
.background{ background-color: rgb(208,  
193, 182) }
```

This example shows the color as background, it is applied via the CSS property "background".

To optimize and compress your CSS code, you can use our [online CSS compressor and optimizer](#) based on csstidy. If you want to create a linear or radial gradient as background or border, check our [CSS Gradient Generator](#).

Hey! You found this booklet interesting? Support Converting Colors with the new Membership Option!

The pro membership hides all ads, plus gives you double the colors in the color bucket, and more awesome pro features!

[Learn more, Memberships starting at \\$2.50/m!](#)

**Follow me
on Twitter!**

@ConvertingColor