

Converting Colors

Yxy(54.9796, 0.3297, 0.3209)

Have a look what the booklet for
Yxy(54.9796, 0.3297, 0.3209)
contains.

Yxy(54.9796, 0.3297, 0.3209)	3
Conversions	4
Details	6
Harmonies	12
Previews	24
Color Blindness Simulation	27
CSS Examples	30

Color

Yxy(54.9796, 0.3297, 0.3209)

Conversions

Conversions Part 1

Format	Color
Hex	D8BDC4
RGB	216, 189, 196
RGB Percent	85%, 74%, 77%
CMY	0.1528, 0.2588, 0.2313
CMYK	0.00, 0.13, 0.09, 0.15
HSL	344°, 26%, 79%
HSV	344°, 13%, 85%
XYZ	56.4873, 54.9796, 59.8625
YIQ	197.8710, 13.8450, 7.9010

Conversions

Conversions Part 2

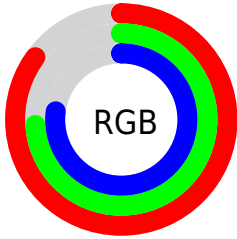
Format	Color
R _{YB}	216, 189, 196
Decimal	14204356
CIE Lab	79.03, 10.77, 0.00
CIE LCh	79, 10.769, 0.005
Yxy	54.9796, 0.3297, 0.3209
Android (android.graphics.Color)	4292394436 (0xFFD8BDC4)
YUV	197.8710, -0.9224, 15.8991
Hunter-Lab	74.1482, 6.2247, 4.0368

Details

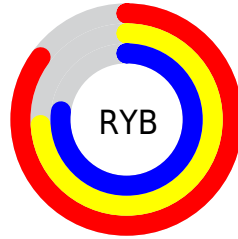
The Yxy color $54.9796, 0.3297, 0.3209$ is a light color, and the websafe version is hex `CCCCCC`. A complement of this color would be $64.5500, 0.2981, 0.3373$, and the grayscale version is $56.3922, 0.3127, 0.3290$.

A 20% lighter version of the original color is $93.6567, 0.3144, 0.3213$, and $27.1384, 0.3345, 0.3198$ is the 20% darker color. If you saturate the color by 10%, you get $45.6800, 0.3468, 0.3140$, and if you desaturate by 10%, it is $65.7460, 0.3158, 0.3274$.

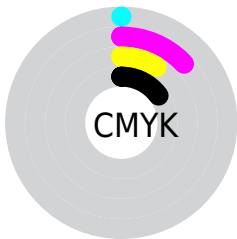
Distribution



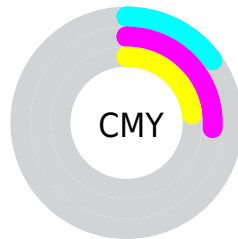
- Red (85%)
- Green (74%)
- Blue (77%)



- Red (85%)
- Yellow (74%)
- Blue (77%)



- Cyan (0%)
- Magenta (13%)
- Yellow (9%)
- Black (15%)





- Cyan (15%)
- Magenta (26%)
- Yellow (23%)

Brightness & Saturation Gradients


These gradients show how the Yxy color 54.9796, 0.3297, 0.3209 changes by changing the brightness by 10 percent. The first figure shows a shift by +10% for each color and the second figure -10%.


Similar to the brightness gradients but the following saturation gradients show a change of the Yxy color 54.9796, 0.3297, 0.3209 by changing the saturation by 10% instead.

 54.9796, 0.3297,
0.3209

 54.9796, 0.3297,
0.3209


405.8346, 0.3214,
0.3249

 39.3854, 0.3317,
0.3199


 97.5111, 0.3267,
0.3223

 27.0597, 0.3342,
0.3187


125.2171, 0.3256,
0.3229

 17.6180, 0.3375,
0.3171


157.7292, 0.3247,
0.3233

 10.6761, 0.3420,
0.3150

195.4318, 0.3238,
0.3237

 5.8495, 0.3486,
0.3119

238.7092, 0.3231,
0.3240

 2.7538, 0.3588,
0.3070

287.9459, 0.3225,

 1.0046, 0.3771,

0.3243

0.2982

343.5262, 0.3219,
0.3246

0.0000, 1.0000,
0.0000

0.0000, 0.0000,
0.0000

54.9796, 0.3297,
0.3209

54.9796, 0.3297,
0.3209

45.6800, 0.3468,
0.3140

65.7460, 0.3158,
0.3274

37.7766, 0.3678,
0.3069

78.0314, 0.3045,
0.3335

31.2036, 0.3933,
0.3000

91.8945, 0.2953,
0.3390

25.8872, 0.4236,
0.2940

93.3436, 0.2894,
0.3289

■ 21.7464, 0.4585,
0.2897

■ 18.6905, 0.4966,
0.2881

■ 16.6155, 0.5351,
0.2904

■ 15.3967, 0.5702,
0.2970

■ 14.8895, 0.5925,
0.3037

Harmonies

Analogous

The Analogous color harmony consists of three colors that are next to each other on the color wheel.



54.9796, 0.3161, 0.3109



54.9796, 0.3297, 0.3209



54.9796, 0.3388, 0.3331

Triad

The Triadic color harmony groups three colors that are evenly spaced from another and form a triangle on the color wheel.



54.9796, 0.3297, 0.3209



54.9796, 0.3232, 0.3538



54.9796, 0.2855, 0.3126

Complementary

The Complementary color scheme is a pair of colors which are on the opposite of each other on the color wheel.



54.9796, 0.3297, 0.3209



64.5500, 0.2981, 0.3373

Split Complementary

Split-complementary colors differ from the complementary color scheme. The scheme consists of three colors, the original color and two neighbors of the complement color.



54.9796, 0.2874, 0.3240



54.9796, 0.3297, 0.3209



54.9796, 0.3088, 0.3482

Square

The Square scheme is like the rectangle color scheme, but the four colors are evenly spaced on the color wheel.



54.9796, 0.3297, 0.3209



54.9796, 0.3349, 0.3523



54.9796, 0.2958, 0.3371



54.9796, 0.2908, 0.3060

Rectangle

The Rectangle color scheme consists of four colors that form a rectangle on the color wheel.



54.9796, 0.3297, 0.3209



54.9796, 0.3409, 0.3411



54.9796, 0.2958, 0.3371



54.9796, 0.2854, 0.3160

Sweetspot

The Sweet Spot groups the original color and five complimentary colors.



54.9820, 0.3297, 0.3209



93.1868, 0.3177, 0.3265



54.8813, 0.3084, 0.2978



19.6802, 0.3187, 0.3260



0.0000, 0.0000, 0.0000



21.4041, 0.3127, 0.3290

Same Dimension

The Same Dimension uses a secret algorithm to generate beautiful new colors.



54.9820, 0.3297, 0.3209



76.2848, 0.3339, 0.3191



57.4434, 0.3344, 0.3364



12.4732, 0.3251, 0.3230



8.8253, 0.5887, 0.3016



0.5459, 0.5387, 0.2741

Inverse Universe

The Inverse Universe completely reimagines the original color for something new.



54.9820, 0.3297, 0.3209



76.2848, 0.3339, 0.3191



61.7337, 0.2935, 0.3215



12.4732, 0.3251, 0.3230



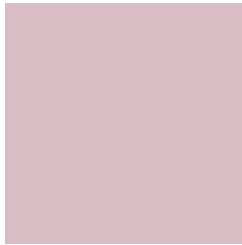
8.8253, 0.5887, 0.3016



0.5459, 0.5387, 0.2741

Previews

White Background



This preview shows how the Yxy color 54.9796, 0.3297, 0.3209 looks on a white background.

Color Contrast Check

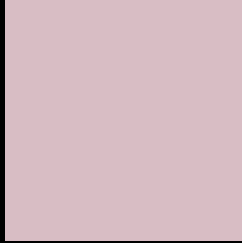
Large Text (above 18pt) WCAG AA × Fail

Any Text WCAG AA × Fail

Large Text (above 18pt) WCAG AAA × Fail

Any Text WCAG AAA × Fail

Black Background



This preview shows how the Yxy color 54.9796, 0.3297, 0.3209 looks on a black background.

Color Contrast Check

Large Text (above 18pt) WCAG AA ✓ Pass

Any Text WCAG AA ✓ Pass

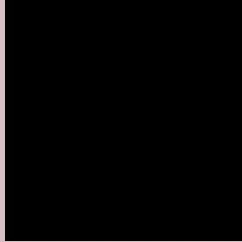
Large Text (above 18pt) WCAG AAA ✓ Pass

Any Text WCAG AAA ✓ Pass

If you want to check with other color combinations, try the [Color Contrast Checker](#).

Yxy 54.9796, 0.3297, 0.3209

Background



This preview shows how black text looks on a background with the Yxy color 54.9796, 0.3297, 0.3209.



This preview shows how white text looks on a background with the Yxy color 54.9796, 0.3297, 0.3209.

Color Blindness Simulation

Color vision deficiency is a very complex topic, and I could not describe the different causes any better than Wikipedia does, so if you want to learn more, you should check out their [article about color blindness](#).

Dichromacy



Original Color

54.9796, 0.3297, 0.3209

Protanopia

55.1595, 0.3121, 0.3242

Deuteranopia

55.1086, 0.3279, 0.3220



Tritanopia

55.0300, 0.3251, 0.3118

Trichromacy



Original Color

54.9796, 0.3297, 0.3209

Protanomaly

55.1963, 0.3186, 0.3231

Deuteranomaly

55.2595, 0.3287, 0.3221

Tritanomaly

54.8883, 0.3275, 0.3152

Monochromacy



Original Color

54.9796, 0.3297, 0.3209

Achromatopsia

56.4712, 0.3127, 0.3290

Achromatomaly

56.0406, 0.3192, 0.3266

CSS Examples

Text

The CSS property to change the color of the text to Yxy 54.9796, 0.3297, 0.3209 is called "color". The color property can be set on classes, ids or directly on the HTML element.

This example shows how text in the color `rgb(216, 189, 196)` looks like.

```
.text, #text, p{  
    color:rgb(216, 189, 196)  
}
```

If you want to add a text shadow in that color use the text-shadow property, you can generate a text shadow directly with our [CSS Text Shadow Generator](#).

Here you see how black text with a 4 pixel rgb(216, 189, 196) colored shadow looks like.

```
.shadow{ text-shadow: 4px 4px 2px rgb(216, 189, 196) }
```

Border

The CSS property to change the border of an element to Yxy 54.9796, 0.3297, 0.3209 is called "border". The border property can be set on classes, ids or directly on the HTML element.

This example shows the color as border, it can be applied via the CSS property "border" or "border-color".

```
.border, #border, table{ border:4px solid rgb(216, 189, 196) }
```

If only the border color should be changed use the property `border-color`.

```
.border{ border-color:rgb(216, 189, 196) }
```

If you want to add a box shadow in that color use:

Here you see how a box with a 4 pixel `rgb(216, 189, 196)` colored shadow looks like.

```
.boxshadow{ -moz-box-shadow:4px 4px 4px  
4px rgb(216, 189, 196); -webkit-box-  
shadow:4px 4px 4px 4px rgb(216, 189, 196);  
box-shadow:4px 4px 4px 4px rgb(216, 189,  
196) }
```


Background

The CSS property to change the background color of an element to Yxy 54.9796, 0.3297, 0.3209 is called "background". The background property can be set on classes, ids or directly on the HTML element.

```
.background, #background, body{  
background: rgb(216, 189, 196) }
```

If only the background color should be changed can be used:

```
.background{ background-color: rgb(216,  
189, 196) }
```

This example shows the color as background, it is applied via the CSS property "background".

To optimize and compress your CSS code, you can use our [online CSS compressor and optimizer](#) based on csstidy. If you want to create a linear or radial gradient as background or border, check our [CSS Gradient Generator](#).

Hey! You found this booklet interesting? Support Converting Colors with the new Membership Option!

The pro membership hides all ads, plus gives you double the colors in the color bucket, and more awesome pro features!

[Learn more, Memberships starting at \\$2.50/m!](#)

**Follow me
on Twitter!**

@ConvertingColor