

# Converting Colors

Yxy(54.9822, 0.3495, 0.3316)

Have a look what the booklet for  
Yxy(54.9822, 0.3495, 0.3316)  
contains.

|   |    |
|---|----|
| <b>Yxy(54.9094, 0.3494, 0.3314)</b> ..... | 3  |
| <b>Conversions</b> .....                  | 4  |
| <b>Details</b> .....                      | 6  |
| <b>Harmonies</b> .....                    | 12 |
| <b>Previews</b> .....                     | 24 |
| <b>Color Blindness Simulation</b> .....   | 27 |
| <b>CSS Examples</b> .....                 | 30 |

# Color

**Yxy(54.9094, 0.3494, 0.3314)**

# Conversions

## Conversions Part 1

| Format      | Color                     |
|-------------|---------------------------|
| Hex         | E3BAB8                    |
| RGB         | 227, 186, 184             |
| RGB Percent | 89%, 73%, 72%             |
| CMY         | 0.1097, 0.2706, 0.2785    |
| CMYK        | 0.00, 0.18, 0.19, 0.11    |
| HSL         | 3°, 43%, 81%              |
| HSV         | 3°, 19%, 89%              |
| XYZ         | 57.8918, 54.9094, 52.8880 |
| YIQ         | 198.0310, 25.0780, 8.0700 |

# Conversions

## Conversions Part 2

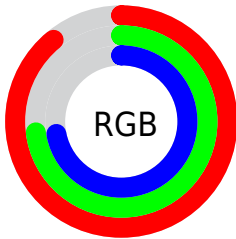
| Format                              | Color                         |
|-------------------------------------|-------------------------------|
| R <sub>Y</sub> B                    | 227, 186, 184                 |
| Decimal                             | 14924472                      |
| CIE Lab                             | 78.99, 14.40, 6.56            |
| CIE LCh                             | 79, 15.822, 24.489            |
| Yxy                                 | 54.9094, 0.3494,<br>0.3314    |
| Android<br>(android.graphics.Color) | 4293114552<br>(0xFFE3BAB8)    |
| YUV                                 | 198.0310, -6.9173,<br>25.4058 |
| Hunter-Lab                          | 74.1009, 9.7778,<br>9.5536    |

# Details

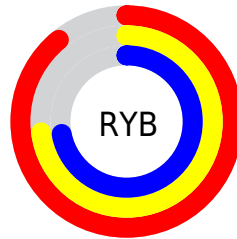
The Yxy color **54.9094, 0.3494, 0.3314** is a light color, and the websafe version is hex **FFCCCC**. A complement of this color would be **69.5888, 0.2842, 0.3266**, and the grayscale version is **56.5249, 0.3127, 0.3290**.

A 20% lighter version of the original color is **91.0555, 0.3225, 0.3310**, and **27.0717, 0.3592, 0.3321** is the 20% darker color. If you saturate the color by 10%, you get **45.5970, 0.3757, 0.3328**, and if you desaturate by 10%, it is **65.7603, 0.3282, 0.3301**.

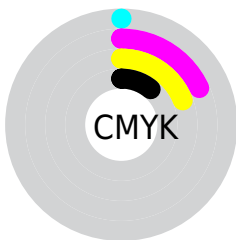
# Distribution



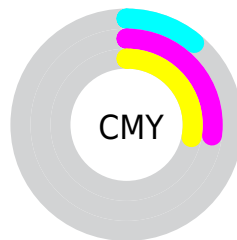
- Red (89%)
- Green (73%)
- Blue (72%)



- Red (89%)
- Yellow (73%)
- Blue (72%)



- Cyan (0%)
- Magenta (18%)
- Yellow (19%)
- Black (11%)




- Cyan (11%)
- Magenta (27%)
- Yellow (28%)


# Brightness & Saturation Gradients

These gradients show how the Yxy color 54.9094, 0.3494, 0.3314 changes by changing the brightness by 10 percent. The first figure shows a shift by +10% for each color and the second figure -10%.


Similar to the brightness gradients but the following saturation gradients show a change of the Yxy color 54.9094, 0.3494, 0.3314 by changing the saturation by 10% instead.





 54.9094, 0.3494,  
0.3314

 54.9094, 0.3494,  
0.3314


405.5684, 0.3314,  
0.3305

 39.3292, 0.3538,  
0.3316


 97.4082, 0.3430,  
0.3311

 27.0159, 0.3593,  
0.3317


125.0956, 0.3405,  
0.3310

 17.5852, 0.3666,  
0.3319


157.5875, 0.3384,  
0.3309

 10.6526, 0.3766,  
0.3319

195.2683, 0.3366,  
0.3308

 5.8337, 0.3910,  
0.3318

238.5224, 0.3351,  
0.3307

 2.7442, 0.4137,  
0.3311

287.7342, 0.3337,

 0.9997, 0.4601,

0.3306

343.2880, 0.3325,  
0.3305

0.3322

0.0000, 1.0000,  
0.0000

0.0000, 0.0000,  
0.0000

54.9094, 0.3494,  
0.3314

54.9094, 0.3494,  
0.3314

45.5970, 0.3757,  
0.3328

65.7603, 0.3282,  
0.3301

37.7466, 0.4080,  
0.3341

78.2070, 0.3111,  
0.3289

31.2860, 0.4467,  
0.3354

92.3130, 0.2973,  
0.3278

26.1343, 0.4910,  
0.3362

95.0735, 0.2958,  
0.3290

■ 22.2022, 0.5381,  
0.3364

■ 19.3889, 0.5823,  
0.3356

■ 17.5780, 0.6165,  
0.3340

■ 16.6235, 0.6360,  
0.3321

■ 16.5641, 0.6375,  
0.3321

# Harmonies

## Analogous

The Analogous color harmony consists of three colors that are next to each other on the color wheel.



54.9094, 0.3343, 0.3141



54.9094, 0.3494, 0.3314



54.9094, 0.3543, 0.3487

# Triad

The Triadic color harmony groups three colors that are evenly spaced from another and form a triangle on the color wheel.



54.9094, 0.3494, 0.3314



54.9094, 0.3107, 0.3598



54.9094, 0.2786, 0.2964

# Complementary

The Complementary color scheme is a pair of colors which are on the opposite of each other on the color wheel.



54.9094, 0.3494, 0.3314



69.5888, 0.2842, 0.3266

# Split Complementary

Split-complementary colors differ from the complementary color scheme. The scheme consists of three colors, the original color and two neighbors of the complement color.



54.9094, 0.2728, 0.3073



54.9094, 0.3494, 0.3314



54.9094, 0.2910, 0.3444

# Square

The Square scheme is like the rectangle color scheme, but the four colors are evenly spaced on the color wheel.



54.9094, 0.3494, 0.3314



54.9094, 0.3315, 0.3661



54.9094, 0.2773, 0.3248



54.9094, 0.2933, 0.2942



# Rectangle

The Rectangle color scheme consists of four colors that form a rectangle on the color wheel.



54.9094, 0.3494, 0.3314



54.9094, 0.3510, 0.3581



54.9094, 0.2773, 0.3248



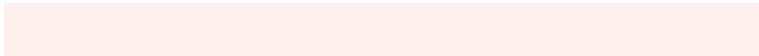
54.9094, 0.2756, 0.2991

# Sweetspot

The Sweet Spot groups the original color and five complimentary colors.



54.9119, 0.3494, 0.3314



90.0985, 0.3228, 0.3297



56.0780, 0.3160, 0.2836



19.0640, 0.3240, 0.3298



0.0000, 0.0000, 0.0000



21.4041, 0.3127, 0.3290



# Same Dimension

The Same Dimension uses a secret algorithm to generate beautiful new colors.



54.9119, 0.3494, 0.3314



66.1507, 0.3598, 0.3320



64.3888, 0.3451, 0.3548



14.4754, 0.3291, 0.3302



9.7054, 0.6366, 0.3328



0.7556, 0.6269, 0.3405

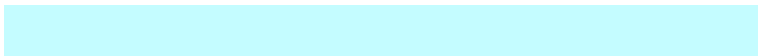


# Inverse Universe

The Inverse Universe completely reimagines the original color for something new.



69.5888, 0.2842, 0.3266



88.7856, 0.2783, 0.3260



58.9542, 0.2828, 0.3018



16.2148, 0.2982, 0.3278



32.0418, 0.2207, 0.3144

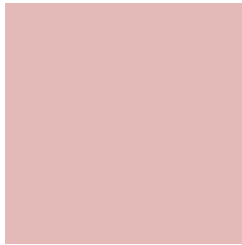


2.4036, 0.2213, 0.3166



# Previews

## White Background



This preview shows how the Yxy color 54.9094, 0.3494, 0.3314 looks on a white background.

## Color Contrast Check

Large Text (above 18pt) WCAG AA × Fail

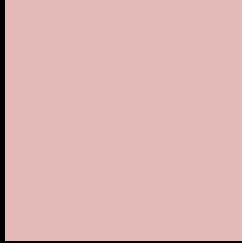
Any Text WCAG AA × Fail

Large Text (above 18pt) WCAG AAA × Fail

Any Text WCAG AAA × Fail



# Black Background



This preview shows how the Yxy color 54.9094, 0.3494, 0.3314 looks on a black background.

## Color Contrast Check

Large Text (above 18pt) WCAG AA ✓ Pass

Any Text WCAG AA ✓ Pass

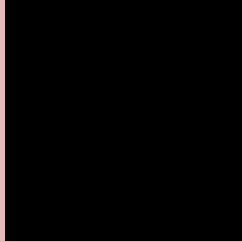
Large Text (above 18pt) WCAG AAA ✓ Pass

Any Text WCAG AAA ✓ Pass

If you want to check with other color combinations, try the [Color Contrast Checker](#).

**Yxy 54.9094, 0.3494, 0.3314**

## Background



This preview shows how black text looks on a background with the Yxy color 54.9094, 0.3494, 0.3314.

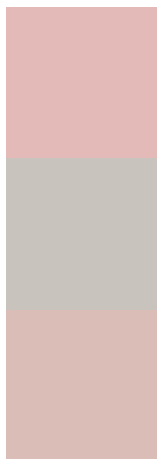


This preview shows how white text looks on a background with the Yxy color 54.9094, 0.3494, 0.3314.

# Color Blindness Simulation

Color vision deficiency is a very complex topic, and I could not describe the different causes any better than Wikipedia does, so if you want to learn more, you should check out their [article about color blindness](#).

## Dichromacy



### Original Color

54.9094, 0.3494, 0.3314

### Protanopia

55.1218, 0.3221, 0.3363

### Deuteranopia

54.8742, 0.3427, 0.3361



## Tritanopia

55.0162, 0.3397, 0.3134

# Trichromacy



## Original Color

54.9094, 0.3494, 0.3314

## Protanomaly

54.9888, 0.3314, 0.3350

## Deuteranomaly

54.9149, 0.3455, 0.3349

## Tritanomaly

55.0422, 0.3429, 0.3200

# Monochromacy



## Original Color

54.9094, 0.3494, 0.3314

## Achromatopsia

56.4712, 0.3127, 0.3290

## Achromatomaly

55.9891, 0.3256, 0.3302

# CSS Examples

## Text

The CSS property to change the color of the text to Yxy 54.9094, 0.3494, 0.3314 is called "color". The color property can be set on classes, ids or directly on the HTML element.

This example shows how text in the color `rgb(227, 186, 184)` looks like.

```
.text, #text, p{  
    color:rgb(227, 186, 184)  
}
```

If you want to add a text shadow in that color use the text-shadow property, you can generate a text shadow directly with our [CSS Text Shadow Generator](#).

Here you see how black text with a 4 pixel rgb(227, 186, 184) colored shadow looks like.

```
.shadow{ text-shadow: 4px 4px 2px rgb(227, 186, 184) }
```

## Border

The CSS property to change the border of an element to Yxy 54.9094, 0.3494, 0.3314 is called "border". The border property can be set on classes, ids or directly on the HTML element.

This example shows the color as border, it can be applied via the CSS property "border" or "border-color".

```
.border, #border, table{ border:4px solid rgb(227, 186, 184) }
```

If only the border color should be changed use the property `border-color`.

```
.border{ border-color:rgb(227, 186, 184) }
```

If you want to add a box shadow in that color use:

Here you see how a box with a 4 pixel `rgb(227, 186, 184)` colored shadow looks like.

```
.boxshadow{ -moz-box-shadow:4px 4px 4px 4px rgb(227, 186, 184); -webkit-box-shadow:4px 4px 4px 4px rgb(227, 186, 184); box-shadow:4px 4px 4px 4px rgb(227, 186, 184) }
```



# Background

The CSS property to change the background color of an element to Yxy 54.9094, 0.3494, 0.3314 is called "background". The background property can be set on classes, ids or directly on the HTML element.

```
.background, #background, body{  
background: rgb(227, 186, 184) }
```

If only the background color should be changed can be used:

```
.background{ background-color: rgb(227,  
186, 184) }
```

This example shows the color as background, it is applied via the CSS property "background".

To optimize and compress your CSS code, you can use our [online CSS compressor and optimizer](#) based on csstidy. If you want to create a linear or radial gradient as background or border, check our [CSS Gradient Generator](#).

Hey! You found this booklet interesting? Support Converting Colors with the new Membership Option!

The pro membership hides all ads, plus gives you double the colors in the color bucket, and more awesome pro features!

**[Learn more, Memberships starting at \\$2.50/m!](#)**

**Follow me  
on Twitter!**

@ConvertingColor