

# Converting Colors

$Y_{xy}(55.0792, 0.3380, 0.3300)$

Have a look what the booklet for  
Yxy(55.0792, 0.3380, 0.3300)  
contains.

<b>Yxy(55.0861, 0.3386, 0.3302)</b> .....	3
<b>Conversions</b> .....	4
<b>Details</b> .....	6
<b>Harmonies</b> .....	12
<b>Previews</b> .....	24
<b>Color Blindness Simulation</b> .....	27
<b>CSS Examples</b> .....	30

# Color

**Yxy(55.0861, 0.3386, 0.3302)**

# Conversions

## Conversions Part 1

<b>Format</b>	<b>Color</b>
Hex	DBBDBC
RGB	219, 189, 188
RGB Percent	86%, 74%, 74%
CMY	0.1412, 0.2588, 0.2626
CMYK	0.00, 0.14, 0.14, 0.14
HSL	2°, 30%, 80%
HSV	2°, 14%, 86%
XYZ	56.4874, 55.0861, 55.2529
YIQ	197.8560, 18.2010, 6.0490

# Conversions

## Conversions Part 2

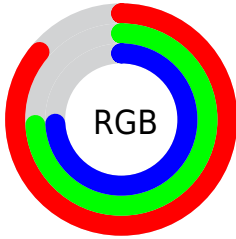
Format	Color
RYB	219, 189, 188
Decimal	14400956
CIELab	79.09, 10.50, 4.42
CIELCh	79, 11.399, 22.842
Yxy	55.0861, 0.3386, 0.3302
Android (android.graphics.Color)	4292591036 (0xFFDBBDBC)
YUV	197.8560, -4.8590, 18.5433
Hunter-Lab	74.2200, 5.9679, 7.8157

# Details

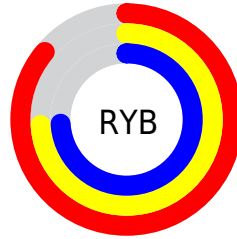
The Yxy color **55.0861, 0.3386, 0.3302** is a light color, and the websafe version is hex **FFCCCC**. A complement of this color would be **65.9596, 0.2913, 0.3278**, and the grayscale version is **56.4033, 0.3127, 0.3290**.

A 20% lighter version of the original color is **93.0965, 0.3198, 0.3300**, and **27.2501, 0.3456, 0.3306** is the 20% darker color. If you saturate the color by 10%, you get **45.7458, 0.3624, 0.3311**, and if you desaturate by 10%, it is **65.9092, 0.3195, 0.3293**.

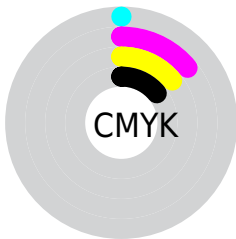
# Distribution



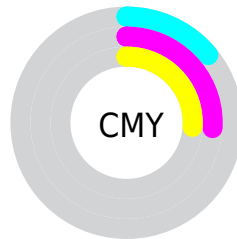
- Red (86%)
- Green (74%)
- Blue (74%)



- Red (86%)
- Yellow (74%)
- Blue (74%)



- Cyan (0%)
- Magenta (14%)
- Yellow (14%)
- Black (14%)




- Cyan (14%)
- Magenta (26%)
- Yellow (26%)


# Brightness & Saturation Gradients

These gradients show how the Yxy color 55.0861, 0.3386, 0.3302 changes by changing the brightness by 10 percent. The first figure shows a shift by +10% for each color and the second figure -10%.


Similar to the brightness gradients but the following saturation gradients show a change of the Yxy color 55.0861, 0.3386, 0.3302 by changing the saturation by 10% instead.





 55.0861, 0.3386,  
0.3302

 55.0861, 0.3386,  
0.3302

406.2382, 0.3260,  
0.3297

 39.4707, 0.3417,  
0.3303


 97.6671, 0.3341,  
0.3301

 27.1261, 0.3456,  
0.3304


125.4014, 0.3323,  
0.3300

 17.6679, 0.3507,  
0.3304


157.9442, 0.3309,  
0.3299

 10.7118, 0.3577,  
0.3305

195.6798, 0.3296,  
0.3299

 5.8734, 0.3678,  
0.3304

238.9926, 0.3285,  
0.3299

 2.7683, 0.3837,  
0.3301

288.2670, 0.3276,

 1.0120, 0.4139,

0.3298

0.3298

343.8874, 0.3267,  
0.3298

0.0000, 1.0000,  
0.0000

0.0000, 0.0000,  
0.0000

55.0861, 0.3386,  
0.3302

55.0861, 0.3386,  
0.3302

45.7458, 0.3624,  
0.3311

65.9092, 0.3195,  
0.3293

37.8169, 0.3919,  
0.3321

78.2680, 0.3041,  
0.3285

31.2329, 0.4278,  
0.3330

92.2218, 0.2917,  
0.3278

25.9192, 0.4699,  
0.3337

93.7976, 0.2911,  
0.3289

■ 21.7941, 0.5165,  
0.3341

■ 18.7661, 0.5632,  
0.3340

■ 16.7306, 0.6031,  
0.3332

■ 15.5626, 0.6293,  
0.3318

■ 15.2066, 0.6382,  
0.3314

# Harmonies

## Analogous

The Analogous color harmony consists of three colors that are next to each other on the color wheel.



55.0861, 0.3275, 0.3176



55.0861, 0.3386, 0.3302



55.0861, 0.3426, 0.3428

# Triad

The Triadic color harmony groups three colors that are evenly spaced from another and form a triangle on the color wheel.



55.0861, 0.3386, 0.3302



55.0861, 0.3122, 0.3514



55.0861, 0.2876, 0.3057

# Complementary

The Complementary color scheme is a pair of colors which are on the opposite of each other on the color wheel.



55.0861, 0.3386, 0.3302



65.9596, 0.2913, 0.3278

# Split Complementary

Split-complementary colors differ from the complementary color scheme. The scheme consists of three colors, the original color and two neighbors of the complement color.



55.0861, 0.2838, 0.3141



55.0861, 0.3386, 0.3302



55.0861, 0.2978, 0.3407

# Square

The Square scheme is like the rectangle color scheme, but the four colors are evenly spaced on the color wheel.



55.0861, 0.3386, 0.3302



55.0861, 0.3271, 0.3555



55.0861, 0.2875, 0.3269



55.0861, 0.2980, 0.3036



# Rectangle

The Rectangle color scheme consists of four colors that form a rectangle on the color wheel.



55.0861, 0.3386, 0.3302



55.0861, 0.3406, 0.3497



55.0861, 0.2875, 0.3269



55.0861, 0.2855, 0.3079

# Sweetspot

The Sweet Spot groups the original color and five complimentary colors.



55.0886, 0.3386, 0.3302



93.2177, 0.3193, 0.3293



56.1266, 0.3147, 0.2948



19.6879, 0.3206, 0.3294



0.0000, 0.0000, 0.0000



21.4041, 0.3127, 0.3290



# Same Dimension

The Same Dimension uses a secret algorithm to generate beautiful new colors.



55.0886, 0.3386, 0.3302



73.5889, 0.3452, 0.3305



61.8883, 0.3361, 0.3474



13.1166, 0.3291, 0.3298



9.0479, 0.6376, 0.3319



0.6098, 0.6303, 0.3378



# Inverse Universe

The Inverse Universe completely reimagines the original color for something new.



65.9596, 0.2913, 0.3278



91.8210, 0.2869, 0.3275



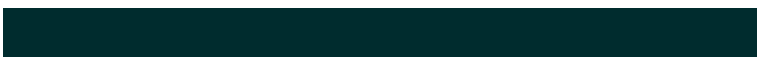
58.5192, 0.2907, 0.3099



14.7559, 0.2982, 0.3282



31.0246, 0.2220, 0.3192

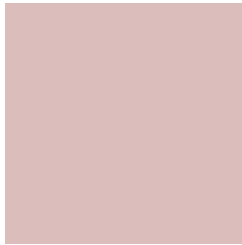


2.0324, 0.2225, 0.3209



# Previews

## White Background



This preview shows how the Yxy color 55.0861, 0.3386, 0.3302 looks on a white background.

## Color Contrast Check

Large Text (above 18pt) WCAG AA × Fail

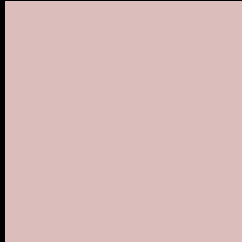
Any Text WCAG AA × Fail

Large Text (above 18pt) WCAG AAA × Fail

Any Text WCAG AAA × Fail



# Black Background



This preview shows how the Yxy color 55.0861, 0.3386, 0.3302 looks on a black background.

## Color Contrast Check

Large Text (above 18pt) WCAG AA ✓ Pass

Any Text WCAG AA ✓ Pass

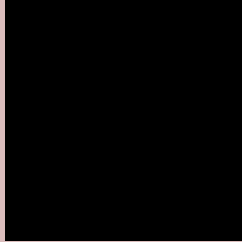
Large Text (above 18pt) WCAG AAA ✓ Pass

Any Text WCAG AAA ✓ Pass

If you want to check with other color combinations, try the [Color Contrast Checker](#).

**Yxy 55.0861, 0.3386, 0.3302**

## **Background**



This preview shows how black text looks on a background with the Yxy color 55.0861, 0.3386, 0.3302.



This preview shows how white text looks on a background with the Yxy color 55.0861, 0.3386, 0.3302.

# Color Blindness Simulation

Color vision deficiency is a very complex topic, and I could not describe the different causes any better than Wikipedia does, so if you want to learn more, you should check out their [article about color blindness](#).

## Dichromacy



### Original Color

55.0861, 0.3386, 0.3302

### Protanopia

55.0712, 0.3197, 0.3339

### Deuteranopia

54.9315, 0.3378, 0.3302



## Tritanopia

55.1771, 0.3293, 0.3119

# Trichromacy



## Original Color

55.0861, 0.3386, 0.3302

## Protanomaly

55.1230, 0.3264, 0.3326

## Deuteranomaly

54.9315, 0.3378, 0.3302

## Tritanomaly

55.2133, 0.3324, 0.3187

# Monochromacy



## Original Color

55.0861, 0.3386, 0.3302

## Achromatopsia

56.4712, 0.3127, 0.3290

## Achromatomaly

56.0471, 0.3223, 0.3302

# CSS Examples

## Text

The CSS property to change the color of the text to Yxy 55.0861, 0.3386, 0.3302 is called "color". The color property can be set on classes, ids or directly on the HTML element.

This example shows how text in the color `rgb(219, 189, 188)` looks like.

```
.text, #text, p{  
    color:rgb(219, 189, 188)  
}
```

If you want to add a text shadow in that color use the text-shadow property, you can generate a text shadow directly with our [CSS Text Shadow Generator](#).

Here you see how black text with a 4 pixel rgb(219, 189, 188) colored shadow looks like.

```
.shadow{ text-shadow: 4px 4px 2px rgb(219, 189, 188) }
```

## Border

The CSS property to change the border of an element to Yxy 55.0861, 0.3386, 0.3302 is called "border". The border property can be set on classes, ids or directly on the HTML element.

This example shows the color as border, it can be applied via the CSS property "border" or "border-color".

```
.border, #border, table{ border:4px solid rgb(219, 189, 188) }
```

If only the border color should be changed use the property `border-color`.

```
.border{ border-color:rgb(219, 189, 188) }
```

If you want to add a box shadow in that color use:

Here you see how a box with a 4 pixel `rgb(219, 189, 188)` colored shadow looks like.

```
.boxshadow{ -moz-box-shadow:4px 4px 4px  
4px rgb(219, 189, 188); -webkit-box-  
shadow:4px 4px 4px 4px rgb(219, 189, 188);  
box-shadow:4px 4px 4px 4px rgb(219, 189,  
188) }
```



# Background

The CSS property to change the background color of an element to Yxy 55.0861, 0.3386, 0.3302 is called "background". The background property can be set on classes, ids or directly on the HTML element.

```
.background, #background, body{  
background: rgb(219, 189, 188) }
```

If only the background color should be changed can be used:

```
.background{ background-color: rgb(219,  
189, 188) }
```

This example shows the color as background, it is applied via the CSS property "background".

To optimize and compress your CSS code, you can use our [online CSS compressor and optimizer](#) based on csstidy. If you want to create a linear or radial gradient as background or border, check our [CSS Gradient Generator](#).

Hey! You found this booklet interesting? Support Converting Colors with the new Membership Option!

The pro membership hides all ads, plus gives you double the colors in the color bucket, and more awesome pro features!

**[Learn more, Memberships starting at \\$2.50/m!](#)**

**Follow me  
on Twitter!**

@ConvertingColor