

Converting Colors

Yxy(55.1082, 0.3346, 0.3222)

Have a look what the booklet for
Yxy(55.1082, 0.3346, 0.3222)
contains.

Yxy(55.0771, 0.3348, 0.3222)	3
Conversions	4
Details	6
Harmonies	12
Previews	24
Color Blindness Simulation	27
CSS Examples	30

Color

Yxy(55.0771, 0.3348, 0.3222)

Conversions

Conversions Part 1

Format	Color
Hex	DCBCC2
RGB	220, 188, 194
RGB Percent	86%, 74%, 76%
CMY	0.1373, 0.2627, 0.2393
CMYK	0.00, 0.15, 0.12, 0.14
HSL	349°, 31%, 80%
HSV	349°, 15%, 86%
XYZ	57.2310, 55.0771, 58.6327
YIQ	198.2520, 17.1460, 8.6500

Conversions

Conversions Part 2

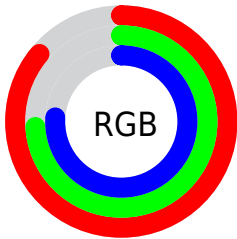
Format	Color
RYB	220, 188, 194
Decimal	14466242
CIELab	79.09, 12.36, 1.23
CIElCh	79, 12.424, 5.670
Yxy	55.0771, 0.3348, 0.3222
Android (android.graphics.Color)	4292656322 (0xFFDCBCC2)
YUV	198.2520, -2.0962, 19.0730
Hunter-Lab	74.2139, 7.7780, 5.1077

Details

The Yxy color $55.0771, 0.3348, 0.3222$ is a light color, and the websafe version is hex `FFCCCC`. A complement of this color would be $66.7324, 0.2944, 0.3359$, and the grayscale version is $56.6382, 0.3127, 0.3290$.

A 20% lighter version of the original color is $92.8635, 0.3162, 0.3232$, and $27.2207, 0.3415, 0.3215$ is the 20% darker color. If you saturate the color by 10%, you get $45.6286, 0.3545, 0.3172$, and if you desaturate by 10%, it is $66.0601, 0.3189, 0.3270$.

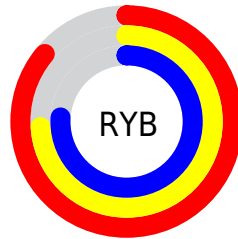
Distribution



Red (86%)

Green (74%)

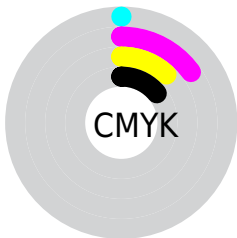
Blue (76%)



Red (86%)

Yellow (74%)

Blue (76%)

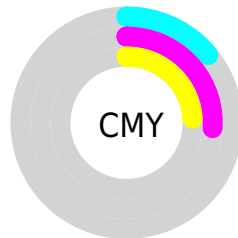


Cyan (0%)

Magenta (15%)

Yellow (12%)

Black (14%)



Cyan (14%)

Magenta (26%)

Yellow (24%)

Brightness & Saturation Gradients


These gradients show how the Yxy color 55.0771, 0.3348, 0.3222 changes by changing the brightness by 10 percent. The first figure shows a shift by +10% for each color and the second figure -10%.


Similar to the brightness gradients but the following saturation gradients show a change of the Yxy color 55.0771, 0.3348, 0.3222 by changing the saturation by 10% instead.


 55.0771, 0.3348,
0.3222

 55.0771, 0.3348,
0.3222

406.2041, 0.3240,
0.3256

 39.4635, 0.3374,
0.3214


 97.6539, 0.3310,
0.3234

 27.1205, 0.3407,
0.3203


125.3859, 0.3295,
0.3239

 17.6637, 0.3450,
0.3190


157.9260, 0.3282,
0.3243

 10.7088, 0.3509,
0.3171

195.6588, 0.3272,
0.3246

 5.8714, 0.3594,
0.3143

238.9687, 0.3262,
0.3249

 2.7670, 0.3728,
0.3099

288.2399, 0.3254,

 1.0114, 0.3969,

0.3251

343.8569, 0.3247,
0.3254

0.3018

0.0000, 1.0000,
0.0000

0.0000, 0.0000,
0.0000

55.0771, 0.3348,
0.3222

55.0771, 0.3348,
0.3222

45.6286, 0.3545,
0.3172

66.0601, 0.3189,
0.3270

37.6392, 0.3788,
0.3121

78.6340, 0.3060,
0.3314

31.0380, 0.4082,
0.3073

92.8615, 0.2956,
0.3354

25.7456, 0.4431,
0.3034

93.9545, 0.2917,
0.3289

■ 21.6741, 0.4828,
0.3010

■ 18.7251, 0.5249,
0.3012

■ 16.7847, 0.5653,
0.3046

■ 15.7146, 0.5988,
0.3112

■ 15.3743, 0.6133,
0.3152

Harmonies

Analogous

The Analogous color harmony consists of three colors that are next to each other on the color wheel.



55.0771, 0.3198, 0.3100



55.0771, 0.3348, 0.3222



55.0771, 0.3439, 0.3363

Triad

The Triadic color harmony groups three colors that are evenly spaced from another and form a triangle on the color wheel.



55.0771, 0.3348, 0.3222



55.0771, 0.3217, 0.3570



55.0771, 0.2820, 0.3081

Complementary

The Complementary color scheme is a pair of colors which are on the opposite of each other on the color wheel.



55.0771, 0.3348, 0.3222



66.7324, 0.2944, 0.3359

Split Complementary

Split-complementary colors differ from the complementary color scheme. The scheme consists of three colors, the original color and two neighbors of the complement color.



55.0771, 0.2825, 0.3203



55.0771, 0.3348, 0.3222



55.0771, 0.3051, 0.3492

Square

The Square scheme is like the rectangle color scheme, but the four colors are evenly spaced on the color wheel.



55.0771, 0.3348, 0.3222



55.0771, 0.3361, 0.3568



55.0771, 0.2909, 0.3355



55.0771, 0.2895, 0.3018

Rectangle

The Rectangle color scheme consists of four colors that form a rectangle on the color wheel.



55.0771, 0.3348, 0.3222



55.0771, 0.3452, 0.3452



55.0771, 0.2909, 0.3355



55.0771, 0.2813, 0.3116

Sweetspot

The Sweet Spot groups the original color and five complimentary colors.



55.0796, 0.3348, 0.3222



93.1407, 0.3182, 0.3272



55.3740, 0.3093, 0.2927



19.6685, 0.3192, 0.3268



0.0000, 0.0000, 0.0000



21.4041, 0.3127, 0.3290

Same Dimension

The Same Dimension uses a secret algorithm to generate beautiful new colors.



55.0796, 0.3348, 0.3222



73.3247, 0.3395, 0.3209



59.0542, 0.3380, 0.3401



13.0909, 0.3262, 0.3247



9.0357, 0.6101, 0.3135



0.5972, 0.5660, 0.2892

Inverse Universe

The Inverse Universe completely reimagines the original color for something new.



55.0796, 0.3348, 0.3222



73.3247, 0.3395, 0.3209



62.1499, 0.2903, 0.3176



13.0909, 0.3262, 0.3247



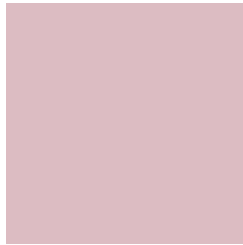
9.0357, 0.6101, 0.3135



0.5972, 0.5660, 0.2892

Previews

White Background



This preview shows how the Yxy color 55.0771, 0.3348, 0.3222 looks on a white background.

Color Contrast Check

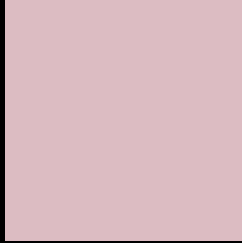
Large Text (above 18pt) WCAG AA × Fail

Any Text WCAG AA × Fail

Large Text (above 18pt) WCAG AAA × Fail

Any Text WCAG AAA × Fail

Black Background



This preview shows how the Yxy color 55.0771, 0.3348, 0.3222 looks on a black background.

Color Contrast Check

Large Text (above 18pt) WCAG AA ✓ Pass

Any Text WCAG AA ✓ Pass

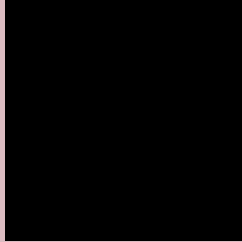
Large Text (above 18pt) WCAG AAA ✓ Pass

Any Text WCAG AAA ✓ Pass

If you want to check with other color combinations, try the [Color Contrast Checker](#).

Yxy 55.0771, 0.3348, 0.3222

Background



This preview shows how black text looks on a background with the Yxy color 55.0771, 0.3348, 0.3222.



This preview shows how white text looks on a background with the Yxy color 55.0771, 0.3348, 0.3222.

Color Blindness Simulation

Color vision deficiency is a very complex topic, and I could not describe the different causes any better than Wikipedia does, so if you want to learn more, you should check out their [article about color blindness](#).

Dichromacy



Original Color

55.0771, 0.3348, 0.3222

Protanopia

55.2495, 0.3137, 0.3254

Deuteranopia

55.3209, 0.3311, 0.3244



Tritanopia

55.1298, 0.3301, 0.3131

Trichromacy



Original Color

55.0771, 0.3348, 0.3222

Protanomaly

54.9959, 0.3211, 0.3231

Deuteranomaly

55.0419, 0.3321, 0.3233

Tritanomaly

54.9900, 0.3325, 0.3165

Monochromacy



Original Color

55.0771, 0.3348, 0.3222

Achromatopsia

56.4712, 0.3127, 0.3290

Achromatomaly

55.7366, 0.3201, 0.3255

CSS Examples

Text

The CSS property to change the color of the text to Yxy 55.0771, 0.3348, 0.3222 is called "color". The color property can be set on classes, ids or directly on the HTML element.

This example shows how text in the color `rgb(220, 188, 194)` looks like.

```
.text, #text, p{  
    color:rgb(220, 188, 194)  
}
```

If you want to add a text shadow in that color use the text-shadow property, you can generate a text shadow directly with our [CSS Text Shadow Generator](#).

Here you see how black text with a 4 pixel rgb(220, 188, 194) colored shadow looks like.

```
.shadow{ text-shadow: 4px 4px 2px rgb(220, 188, 194) }
```

Border

The CSS property to change the border of an element to Yxy 55.0771, 0.3348, 0.3222 is called "border". The border property can be set on classes, ids or directly on the HTML element.

This example shows the color as border, it can be applied via the CSS property "border" or "border-color".

```
.border, #border, table{ border:4px solid rgb(220, 188, 194) }
```

If only the border color should be changed use the property `border-color`.

```
.border{ border-color:rgb(220, 188, 194) }
```

If you want to add a box shadow in that color use:

Here you see how a box with a 4 pixel `rgb(220, 188, 194)` colored shadow looks like.

```
.boxshadow{ -moz-box-shadow:4px 4px 4px  
4px rgb(220, 188, 194); -webkit-box-  
shadow:4px 4px 4px 4px rgb(220, 188, 194);  
box-shadow:4px 4px 4px 4px rgb(220, 188,  
194) }
```


Background

The CSS property to change the background color of an element to Yxy 55.0771, 0.3348, 0.3222 is called "background". The background property can be set on classes, ids or directly on the HTML element.

```
.background, #background, body{  
background: rgb(220, 188, 194) }
```

If only the background color should be changed can be used:

```
.background{ background-color: rgb(220,  
188, 194) }
```

This example shows the color as background, it is applied via the CSS property "background".

To optimize and compress your CSS code, you can use our [online CSS compressor and optimizer](#) based on csstidy. If you want to create a linear or radial gradient as background or border, check our [CSS Gradient Generator](#).

Hey! You found this booklet interesting? Support Converting Colors with the new Membership Option!

The pro membership hides all ads, plus gives you double the colors in the color bucket, and more awesome pro features!

[Learn more, Memberships starting at \\$2.50/m!](#)

**Follow me
on Twitter!**

@ConvertingColor