

Converting Colors

$Y_{xy}(55.1297, 0.3522, 0.3360)$

Have a look what the booklet for
Yxy(55.1297, 0.3522, 0.3360)
contains.

Yxy(55.2077, 0.3517, 0.3360)	3
<i>Conversions</i>	4
<i>Details</i>	6
<i>Harmonies</i>	12
<i>Previews</i>	24
<i>Color Blindness Simulation</i>	27
<i>CSS Examples</i>	30

Color

Yxy(55.2077, 0.3517, 0.3360)

Conversions

Conversions Part 1

Format	Color
Hex	E3BBB5
RGB	227, 187, 181
RGB Percent	89%, 73%, 71%
CMY	0.1098, 0.2666, 0.2903
CMYK	0.00, 0.18, 0.20, 0.11
HSL	8°, 45%, 80%
HSV	8°, 20%, 89%
XYZ	57.7873, 55.2077, 51.3136
YIQ	198.2760, 25.7660, 6.6140

Conversions

Conversions Part 2

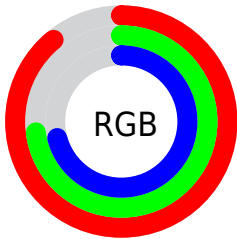
Format	Color
RYB	227, 188, 181
Decimal	14924725
CIELab	79.16, 13.40, 8.43
CIELCh	79, 15.834, 32.168
Yxy	55.2077, 0.3517, 0.3360
Android (android.graphics.Color)	4293114805 (0xFFE3BBB5)
YUV	198.2760, -8.5171, 25.1909
Hunter-Lab	74.3019, 8.7978, 11.0651

Details

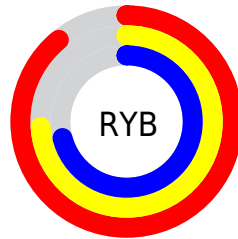
The Yxy color **55.2077, 0.3517, 0.3360** is a light color, and the websafe version is hex **FFCCCC**. A complement of this color would be **67.0641, 0.2820, 0.3219**, and the grayscale version is **56.6902, 0.3127, 0.3290**.

A 20% lighter version of the original color is **91.4756, 0.3243, 0.3349**, and **27.2666, 0.3624, 0.3382** is the 20% darker color. If you saturate the color by 10%, you get **46.5501, 0.3776, 0.3397**, and if you desaturate by 10%, it is **65.1717, 0.3305, 0.3324**.

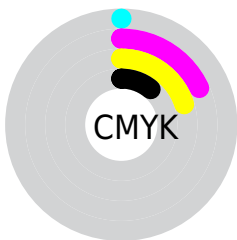
Distribution



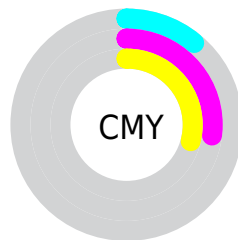
- Red (89%)
- Green (73%)
- Blue (71%)



- Red (89%)
- Yellow (74%)
- Blue (71%)



- Cyan (0%)
- Magenta (18%)
- Yellow (20%)
- Black (11%)



- Cyan (11%)
- Magenta (27%)
- Yellow (29%)

Brightness & Saturation Gradients


These gradients show how the Yxy color 55.2077, 0.3517, 0.3360 changes by changing the brightness by 10 percent. The first figure shows a shift by +10% for each color and the second figure -10%.


Similar to the brightness gradients but the following saturation gradients show a change of the Yxy color 55.2077, 0.3517, 0.3360 by changing the saturation by 10% instead.


 55.2077, 0.3517,
0.3360

 55.2077, 0.3517,
0.3360

406.6988, 0.3326,
0.3329

 39.5680, 0.3563,
0.3367

 97.8452, 0.3449,
0.3350

 27.2019, 0.3622,
0.3375

125.6118, 0.3423,
0.3345

 17.7249, 0.3700,
0.3384


158.1896, 0.3401,
0.3342

 10.7527, 0.3805,
0.3396

195.9628, 0.3381,
0.3339

 5.9008, 0.3958,
0.3410

239.3160, 0.3365,
0.3336

 2.7848, 0.4197,
0.3424

288.6334, 0.3350,

 1.0205, 0.4726,

0.3333

0.3505

344.2995, 0.3338,
0.3331

0.0000, 1.0000,
0.0000

0.0000, 0.0000,
0.0000

55.2077, 0.3517,
0.3360

55.2077, 0.3517,
0.3360

46.5501, 0.3776,
0.3397

65.1717, 0.3305,
0.3324

39.1375, 0.4089,
0.3434

76.4854, 0.3131,
0.3291

32.9147, 0.4459,
0.3466

89.1993, 0.2990,
0.3260

27.8195, 0.4878,
0.3488

95.0710, 0.2958,
0.3290

■ 23.7839, 0.5321,
0.3494

■ 20.7325, 0.5743,
0.3476

■ 18.5798, 0.6083,
0.3433

■ 17.2466, 0.6299,
0.3380

Harmonies

Analogous

The Analogous color harmony consists of three colors that are next to each other on the color wheel.



55.2077, 0.3389, 0.3183



55.2077, 0.3517, 0.3360



55.2077, 0.3536, 0.3526

Triad

The Triadic color harmony groups three colors that are evenly spaced from another and form a triangle on the color wheel.



55.2077, 0.3517, 0.3360



55.2077, 0.3054, 0.3566



55.2077, 0.2816, 0.2950

Complementary

The Complementary color scheme is a pair of colors which are on the opposite of each other on the color wheel.



55.2077, 0.3517, 0.3360



67.0641, 0.2820, 0.3219

Split Complementary

Split-complementary colors differ from the complementary color scheme. The scheme consists of three colors, the original color and two neighbors of the complement color.



55.2077, 0.2734, 0.3038



55.2077, 0.3517, 0.3360



55.2077, 0.2868, 0.3395

Square

The Square scheme is like the rectangle color scheme, but the four colors are evenly spaced on the color wheel.



55.2077, 0.3517, 0.3360



55.2077, 0.3264, 0.3655



55.2077, 0.2752, 0.3199



55.2077, 0.2982, 0.2951

Rectangle

The Rectangle color scheme consists of four colors that form a rectangle on the color wheel.



55.2077, 0.3517, 0.3360



55.2077, 0.3485, 0.3609



55.2077, 0.2752, 0.3199



55.2077, 0.2778, 0.2970

Sweetspot

The Sweet Spot groups the original color and five complimentary colors.



55.2102, 0.3517, 0.3360



90.8621, 0.3227, 0.3310



54.6237, 0.3193, 0.2843



19.2438, 0.3239, 0.3312



0.0000, 0.0000, 0.0000



21.4041, 0.3127, 0.3290

Same Dimension

The Same Dimension uses a secret algorithm to generate beautiful new colors.



55.2102, 0.3517, 0.3360



67.3023, 0.3612, 0.3374



65.4432, 0.3468, 0.3608



14.6708, 0.3289, 0.3321



10.1526, 0.6282, 0.3394



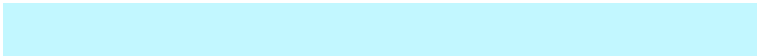
0.8489, 0.6055, 0.3575

Inverse Universe

The Inverse Universe completely reimagines the original color for something new.



67.0641, 0.2820, 0.3219



85.1727, 0.2765, 0.3204



56.0391, 0.2803, 0.2950



15.9972, 0.2982, 0.3258



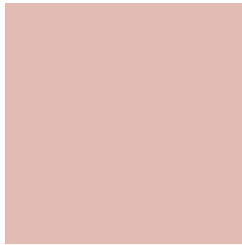
26.7141, 0.2131, 0.2871



2.0641, 0.2150, 0.2938

Previews

White Background



This preview shows how the Yxy color 55.2077, 0.3517, 0.3360 looks on a white background.

Color Contrast Check

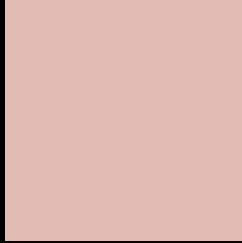
Large Text (above 18pt) WCAG AA × Fail

Any Text WCAG AA × Fail

Large Text (above 18pt) WCAG AAA × Fail

Any Text WCAG AAA × Fail

Black Background



This preview shows how the Yxy color 55.2077, 0.3517, 0.3360 looks on a black background.

Color Contrast Check

Large Text (above 18pt) WCAG AA ✓ Pass

Any Text WCAG AA ✓ Pass

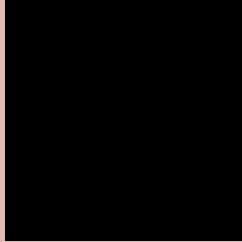
Large Text (above 18pt) WCAG AAA ✓ Pass

Any Text WCAG AAA ✓ Pass

If you want to check with other color combinations, try the [Color Contrast Checker](#).

Yxy 55.2077, 0.3517, 0.3360

Background



This preview shows how black text looks on a background with the Yxy color 55.2077, 0.3517, 0.3360.

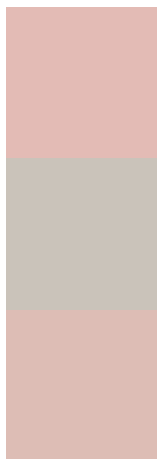


This preview shows how white text looks on a background with the Yxy color 55.2077, 0.3517, 0.3360.

Color Blindness Simulation

Color vision deficiency is a very complex topic, and I could not describe the different causes any better than Wikipedia does, so if you want to learn more, you should check out their [article about color blindness](#).

Dichromacy



Original Color

55.2077, 0.3517, 0.3360

Protanopia

55.1319, 0.3252, 0.3399

Deuteranopia

55.1035, 0.3461, 0.3384



Tritanopia

55.0625, 0.3389, 0.3123

Trichromacy



Original Color

55.2077, 0.3517, 0.3360

Protanomaly

55.0088, 0.3346, 0.3386

Deuteranomaly

54.9906, 0.3480, 0.3372

Tritanomaly

54.9977, 0.3437, 0.3212

Monochromacy



Original Color

55.2077, 0.3517, 0.3360

Achromatopsia

56.4712, 0.3127, 0.3290

Achromatomaly

55.9447, 0.3264, 0.3314

CSS Examples

Text

The CSS property to change the color of the text to Yxy 55.2077, 0.3517, 0.3360 is called "color". The color property can be set on classes, ids or directly on the HTML element.

This example shows how text in the color `rgb(227, 187, 181)` looks like.

```
.text, #text, p{  
    color:rgb(227, 187, 181)  
}
```

If you want to add a text shadow in that color use the text-shadow property, you can generate a text shadow directly with our [CSS Text Shadow Generator](#).

Here you see how black text with a 4 pixel rgb(227, 187, 181) colored shadow looks like.

```
.shadow{ text-shadow: 4px 4px 2px rgb(227, 187, 181) }
```

Border

The CSS property to change the border of an element to Yxy 55.2077, 0.3517, 0.3360 is called "border". The border property can be set on classes, ids or directly on the HTML element.

This example shows the color as border, it can be applied via the CSS property "border" or "border-color".

```
.border, #border, table{ border:4px solid rgb(227, 187, 181) }
```

If only the border color should be changed use the property `border-color`.

```
.border{ border-color:rgb(227, 187, 181) }
```

If you want to add a box shadow in that color use:

Here you see how a box with a 4 pixel `rgb(227, 187, 181)` colored shadow looks like.

```
.boxshadow{ -moz-box-shadow:4px 4px 4px  
4px rgb(227, 187, 181); -webkit-box-  
shadow:4px 4px 4px 4px rgb(227, 187, 181);  
box-shadow:4px 4px 4px 4px rgb(227, 187,  
181) }
```


Background

The CSS property to change the background color of an element to Yxy 55.2077, 0.3517, 0.3360 is called "background". The background property can be set on classes, ids or directly on the HTML element.

```
.background, #background, body{  
background: rgb(227, 187, 181) }
```

If only the background color should be changed can be used:

```
.background{ background-color: rgb(227,  
187, 181) }
```

This example shows the color as background, it is applied via the CSS property "background".

To optimize and compress your CSS code, you can use our [online CSS compressor and optimizer](#) based on csstidy. If you want to create a linear or radial gradient as background or border, check our [CSS Gradient Generator](#).

Hey! You found this booklet interesting? Support Converting Colors with the new Membership Option!

The pro membership hides all ads, plus gives you double the colors in the color bucket, and more awesome pro features!

[Learn more, Memberships starting at \\$2.50/m!](#)

**Follow me
on Twitter!**

@ConvertingColor