

Converting Colors

$Yxy(55.1413, 0.33335, 0.33350)$

Have a look what the booklet for
Yxy(55.1413, 0.3335, 0.3350)
contains.

Yxy(55.2842, 0.3331, 0.3350)	3
<i>Conversions</i>	4
<i>Details</i>	6
<i>Harmonies</i>	12
<i>Previews</i>	24
<i>Color Blindness Simulation</i>	27
<i>CSS Examples</i>	30

Color

Yxy(55.2842, 0.3331, 0.3350)

Conversions

Conversions Part 1

Format	Color
Hex	D4C0BB
RGB	212, 192, 187
RGB Percent	83%, 75%, 73%
CMY	0.1686, 0.2470, 0.2668
CMYK	0.00, 0.09, 0.12, 0.17
HSL	12°, 23%, 78%
HSV	12°, 12%, 83%
XYZ	54.9706, 55.2842, 54.7726
YIQ	197.4100, 13.5250, 2.6850

Conversions

Conversions Part 2

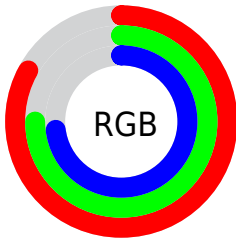
Format	Color
R _Y B	212, 193, 187
Decimal	13942971
CIE Lab	79.20, 6.22, 5.08
CIE LCh	79, 8.032, 39.278
Yxy	55.2842, 0.3331, 0.3350
Android (android.graphics.Color)	4292133051 (0xFFD4C0BB)
YUV	197.4100, -5.1321, 12.7954
Hunter-Lab	74.3533, 1.8496, 8.3712

Details

The Yxy color $55.2842, 0.3331, 0.3350$ is a light color, and the websafe version is hex `CCCCCC`. A complement of this color would be $59.9327, 0.2946, 0.3229$, and the grayscale version is $56.1222, 0.3127, 0.3290$.

A 20% lighter version of the original color is $94.8659, 0.3202, 0.3338$, and $27.3546, 0.3380, 0.3370$ is the 20% darker color. If you saturate the color by 10%, you get $47.4276, 0.3543, 0.3405$, and if you desaturate by 10%, it is $64.1362, 0.3155, 0.3299$.

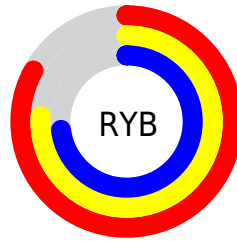
Distribution



Red (83%)

Green (75%)

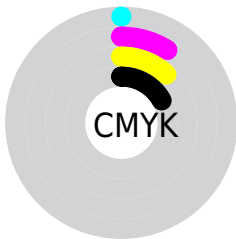
Blue (73%)



Red (83%)

Yellow (76%)

Blue (73%)

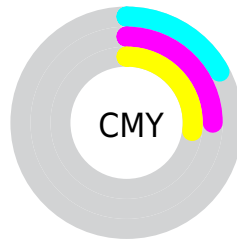


Cyan (0%)

Magenta (9%)

Yellow (12%)

Black (17%)



Cyan (17%)


Magenta (25%)

Yellow (27%)

Brightness & Saturation Gradients


These gradients show how the Yxy color 55.2842, 0.3331, 0.3350 changes by changing the brightness by 10 percent. The first figure shows a shift by +10% for each color and the second figure -10%.

Similar to the brightness gradients but the following saturation gradients show a change of the Yxy color 55.2842, 0.3331, 0.3350 by changing the saturation by 10% instead.


 55.2842, 0.3331,
0.3350

 55.2842, 0.3331,
0.3350


406.9883, 0.3232,
0.3322

 39.6293, 0.3355,
0.3357

 97.9572, 0.3295,
0.3340

 27.2496, 0.3386,
0.3365


125.7442, 0.3282,
0.3336

 17.7608, 0.3426,
0.3375


158.3439, 0.3270,
0.3333

 10.7784, 0.3481,
0.3389

196.1408, 0.3260,
0.3330

 5.9180, 0.3560,
0.3409

239.5193, 0.3252,
0.3328

 2.7953, 0.3685,
0.3437

288.8638, 0.3244,

 1.0258, 0.3930,

0.3325

344.5587, 0.3238,
0.3323

0.3499

0.0000, 1.0000,
0.0000

0.0000, 0.0000,
0.0000

55.2842, 0.3331,
0.3350

55.2842, 0.3331,
0.3350

47.4276, 0.3543,
0.3405

64.1362, 0.3155,
0.3299

40.5244, 0.3799,
0.3461

74.0093, 0.3010,
0.3252

34.5401, 0.4102,
0.3516

84.9375, 0.2890,
0.3209

29.4356, 0.4456,
0.3564

92.7387, 0.2872,
0.3289

■ 25.1688, 0.4851,
0.3598

■ 21.6940, 0.5266,
0.3609

■ 18.9612, 0.5662,
0.3588

■ 16.9140, 0.5990,
0.3531

■ 15.6966, 0.6188,
0.3469

Harmonies

Analogous

The Analogous color harmony consists of three colors that are next to each other on the color wheel.



55.2842, 0.3279, 0.3257



55.2842, 0.3331, 0.3350



55.2842, 0.3327, 0.3429

Triad

The Triadic color harmony groups three colors that are evenly spaced from another and form a triangle on the color wheel.



55.2842, 0.3331, 0.3350



55.2842, 0.3066, 0.3410



55.2842, 0.2986, 0.3112

Complementary

The Complementary color scheme is a pair of colors which are on the opposite of each other on the color wheel.



55.2842, 0.3331, 0.3350



59.9327, 0.2946, 0.3229

Split Complementary

Split-complementary colors differ from the complementary color scheme. The scheme consists of three colors, the original color and two neighbors of the complement color.



55.2842, 0.2931, 0.3148



55.2842, 0.3331, 0.3350



55.2842, 0.2977, 0.3321

Square

The Square scheme is like the rectangle color scheme, but the four colors are evenly spaced on the color wheel.



55.2842, 0.3331, 0.3350



55.2842, 0.3173, 0.3466



55.2842, 0.2928, 0.3225



55.2842, 0.3079, 0.3122

Rectangle

The Rectangle color scheme consists of four colors that form a rectangle on the color wheel.



55.2842, 0.3331, 0.3350



55.2842, 0.3294, 0.3463



55.2842, 0.2928, 0.3225



55.2842, 0.2962, 0.3119

Sweetspot

The Sweet Spot groups the original color and five complimentary colors.



55.2866, 0.3331, 0.3350



94.2695, 0.3192, 0.3310



54.0340, 0.3179, 0.3058



19.9529, 0.3205, 0.3314



0.0000, 0.0000, 0.0000



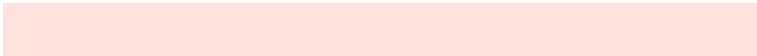
21.4041, 0.3127, 0.3290

Same Dimension

The Same Dimension uses a secret algorithm to generate beautiful new colors.



55.2866, 0.3331, 0.3350



81.0396, 0.3377, 0.3363



61.0095, 0.3313, 0.3495



12.8208, 0.3286, 0.3338



9.8035, 0.6166, 0.3486



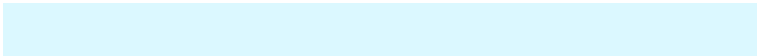
0.7102, 0.5835, 0.3749

Inverse Universe

The Inverse Universe completely reimagines the original color for something new.



59.9327, 0.2946, 0.3229



89.3562, 0.2911, 0.3216



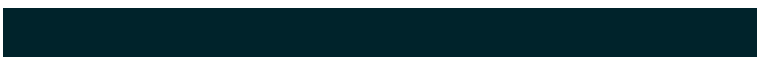
54.1160, 0.2943, 0.3077



13.6643, 0.2983, 0.3242



20.6928, 0.2066, 0.2636



1.3581, 0.2100, 0.2761

Previews

White Background



This preview shows how the Yxy color 55.2842, 0.3331, 0.3350 looks on a white background.

Color Contrast Check

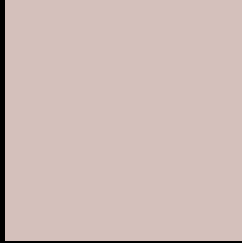
Large Text (above 18pt) WCAG AA × Fail

Any Text WCAG AA × Fail

Large Text (above 18pt) WCAG AAA × Fail

Any Text WCAG AAA × Fail

Black Background



This preview shows how the Yxy color 55.2842, 0.3331, 0.3350 looks on a black background.

Color Contrast Check

Large Text (above 18pt) WCAG AA ✓ Pass

Any Text WCAG AA ✓ Pass

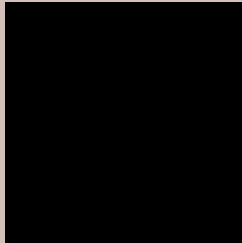
Large Text (above 18pt) WCAG AAA ✓ Pass

Any Text WCAG AAA ✓ Pass

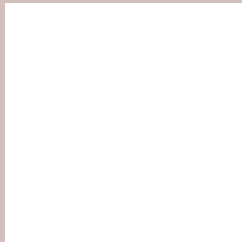
If you want to check with other color combinations, try the [Color Contrast Checker](#).

Yxy 55.2842, 0.3331, 0.3350

Background



This preview shows how black text looks on a background with the Yxy color 55.2842, 0.3331, 0.3350.



This preview shows how white text looks on a background with the Yxy color 55.2842, 0.3331, 0.3350.

Color Blindness Simulation

Color vision deficiency is a very complex topic, and I could not describe the different causes any better than Wikipedia does, so if you want to learn more, you should check out their [article about color blindness](#).

Dichromacy



Original Color

55.2842, 0.3331, 0.3350

Protanopia

55.1218, 0.3221, 0.3363

Deuteranopia

55.3202, 0.3384, 0.3326



Tritanopia

55.0510, 0.3217, 0.3117

Trichromacy



Original Color

55.2842, 0.3331, 0.3350

Protanomaly

55.1935, 0.3262, 0.3362

Deuteranomaly

55.4484, 0.3366, 0.3338

Tritanomaly

55.0503, 0.3255, 0.3197

Monochromacy



Original Color

55.2842, 0.3331, 0.3350

Achromatopsia

55.8340, 0.3127, 0.3290

Achromatomaly

55.4370, 0.3198, 0.3314

CSS Examples

Text

The CSS property to change the color of the text to Yxy 55.2842, 0.3331, 0.3350 is called "color". The color property can be set on classes, ids or directly on the HTML element.

This example shows how text in the color `rgb(212, 192, 187)` looks like.

```
.text, #text, p{  
    color:rgb(212, 192, 187)  
}
```

If you want to add a text shadow in that color use the text-shadow property, you can generate a text shadow directly with our [CSS Text Shadow Generator](#).

Here you see how black text with a 4 pixel rgb(212, 192, 187) colored shadow looks like.

```
.shadow{ text-shadow: 4px 4px 2px rgb(212, 192, 187) }
```

Border

The CSS property to change the border of an element to Yxy 55.2842, 0.3331, 0.3350 is called "border". The border property can be set on classes, ids or directly on the HTML element.

This example shows the color as border, it can be applied via the CSS property "border" or "border-color".

```
.border, #border, table{ border:4px solid rgb(212, 192, 187) }
```

If only the border color should be changed use the property `border-color`.

```
.border{ border-color:rgb(212, 192, 187) }
```

If you want to add a box shadow in that color use:

Here you see how a box with a 4 pixel `rgb(212, 192, 187)` colored shadow looks like.

```
.boxshadow{ -moz-box-shadow:4px 4px 4px  
4px rgb(212, 192, 187); -webkit-box-  
shadow:4px 4px 4px 4px rgb(212, 192, 187);  
box-shadow:4px 4px 4px 4px rgb(212, 192,  
187) }
```


Background

The CSS property to change the background color of an element to Yxy 55.2842, 0.3331, 0.3350 is called "background". The background property can be set on classes, ids or directly on the HTML element.

```
.background, #background, body{  
background: rgb(212, 192, 187) }
```

If only the background color should be changed can be used:

```
.background{ background-color: rgb(212,  
192, 187) }
```

This example shows the color as background, it is applied via the CSS property "background".

To optimize and compress your CSS code, you can use our [online CSS compressor and optimizer](#) based on csstidy. If you want to create a linear or radial gradient as background or border, check our [CSS Gradient Generator](#).

Hey! You found this booklet interesting? Support Converting Colors with the new Membership Option!

The pro membership hides all ads, plus gives you double the colors in the color bucket, and more awesome pro features!

[Learn more, Memberships starting at \\$2.50/m!](#)

**Follow me
on Twitter!**

@ConvertingColor