

Converting Colors

Yxy(55.1601, 0.3488, 0.3539)

Have a look what the booklet for
Yxy(55.1601, 0.3488, 0.3539)
contains.

Yxy(55.0866, 0.3485, 0.3540)	3
<i>Conversions</i>	4
<i>Details</i>	6
<i>Harmonies</i>	12
<i>Previews</i>	24
<i>Color Blindness Simulation</i>	27
<i>CSS Examples</i>	30

Color

Yxy(55.0866, 0.3485, 0.3540)

Conversions

Conversions Part 1

Format	Color
Hex	D7C0AB
RGB	215, 192, 171
RGB Percent	84%, 75%, 67%
CMY	0.1567, 0.2471, 0.3295
CMYK	0.00, 0.11, 0.20, 0.16
HSL	29°, 36%, 76%
HSV	29°, 20%, 84%
XYZ	54.2307, 55.0866, 46.2945
YIQ	196.4830, 20.4490, -1.6550

Conversions

Conversions Part 2

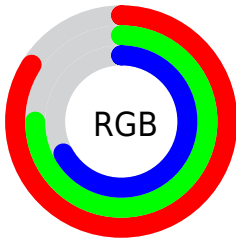
Format	Color
R _Y B	215, 211, 171
Decimal	14139563
CIE Lab	79.09, 4.83, 13.56
CIE LCh	79, 14.394, 70.397
Yxy	55.0866, 0.3485, 0.3540
Android (android.graphics.Color)	4292329643 (0xFFD7C0AB)
YUV	196.4830, -12.5631, 16.2394
Hunter-Lab	74.2203, 0.5394, 14.9724

Details

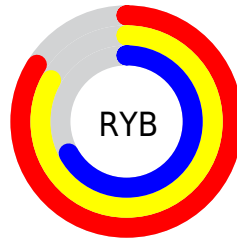
The Yxy color **55.0866, 0.3485, 0.3540** is a light color, and the websafe version is hex **CCCCCC**. A complement of this color would be **52.1588, 0.2806, 0.3026**, and the grayscale version is **55.5777, 0.3127, 0.3290**.

A 20% lighter version of the original color is **93.8858, 0.3306, 0.3505**, and **27.2707, 0.3578, 0.3606** is the 20% darker color. If you saturate the color by 10%, you get **49.5830, 0.3698, 0.3669**, and if you desaturate by 10%, it is **61.1060, 0.3298, 0.3415**.

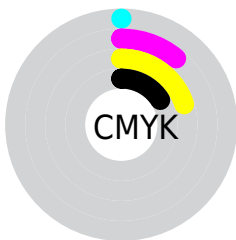
Distribution



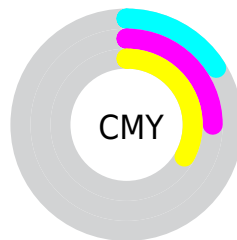
- Red (84%)
- Green (75%)
- Blue (67%)



- Red (84%)
- Yellow (83%)
- Blue (67%)



- Cyan (0%)
- Magenta (11%)
- Yellow (20%)
- Black (16%)



- Cyan (16%)
- Magenta (25%)
- Yellow (33%)

Brightness & Saturation Gradients


These gradients show how the Yxy color 55.0866, 0.3485, 0.3540 changes by changing the brightness by 10 percent. The first figure shows a shift by +10% for each color and the second figure -10%.

Similar to the brightness gradients but the following saturation gradients show a change of the Yxy color 55.0866, 0.3485, 0.3540 by changing the saturation by 10% instead.

 55.0866, 0.3485,
0.3540

 55.0866, 0.3485,
0.3540


406.2401, 0.3310,
0.3420

 39.4711, 0.3527,
0.3568


 97.6678, 0.3422,
0.3498

 27.1264, 0.3581,
0.3604


125.4023, 0.3399,
0.3481

 17.6682, 0.3651,
0.3649


157.9452, 0.3379,
0.3468

 10.7120, 0.3746,
0.3710

195.6810, 0.3361,
0.3456

 5.8735, 0.3882,
0.3794

238.9939, 0.3346,
0.3445

 2.7683, 0.4091,
0.3917

288.2685, 0.3333,

 1.0120, 0.4860,

0.3436

0.4485

343.8891, 0.3321,
0.3428

0.0000, 1.0000,
0.0000

0.0000, 0.0000,
0.0000

55.0866, 0.3485,
0.3540

55.0866, 0.3485,
0.3540

49.5830, 0.3698,
0.3669

61.1060, 0.3298,
0.3415

44.5729, 0.3937,
0.3798

67.6480, 0.3134,
0.3296

40.0432, 0.4200,
0.3918

74.7284, 0.2993,
0.3185

35.9773, 0.4481,
0.4020

82.2309, 0.2881,
0.3102

■ 32.3572, 0.4768,
0.4091

■ 88.9487, 0.2886,
0.3220

■ 29.1634, 0.5044,
0.4118

■ 93.1922, 0.2889,
0.3289

■ 26.3741, 0.5291,
0.4092

■ 24.0662, 0.5490,
0.4023

Harmonies

Analogous

The Analogous color harmony consists of three colors that are next to each other on the color wheel.



55.0866, 0.3497, 0.3399



55.0866, 0.3485, 0.3540



55.0866, 0.3375, 0.3619

Triad

The Triadic color harmony groups three colors that are evenly spaced from another and form a triangle on the color wheel.



55.0866, 0.3485, 0.3540



55.0866, 0.2854, 0.3337



55.0866, 0.3045, 0.2995

Complementary

The Complementary color scheme is a pair of colors which are on the opposite of each other on the color wheel.



55.0866, 0.3485, 0.3540



52.1588, 0.2806, 0.3026

Split Complementary

Split-complementary colors differ from the complementary color scheme. The scheme consists of three colors, the original color and two neighbors of the complement color.



55.0866, 0.2879, 0.2972



55.0866, 0.3485, 0.3540



55.0866, 0.2771, 0.3163

Square

The Square scheme is like the rectangle color scheme, but the four colors are evenly spaced on the color wheel.



55.0866, 0.3485, 0.3540



55.0866, 0.3010, 0.3503



55.0866, 0.2780, 0.3031



55.0866, 0.3239, 0.3090

Rectangle

The Rectangle color scheme consists of four colors that form a rectangle on the color wheel.



55.0866, 0.3485, 0.3540



55.0866, 0.3263, 0.3623



55.0866, 0.2780, 0.3031



55.0866, 0.2985, 0.2978

Sweetspot

The Sweet Spot groups the original color and five complimentary colors.



55.0891, 0.3485, 0.3540



94.0535, 0.3223, 0.3361



47.4891, 0.3324, 0.3013



19.9965, 0.3234, 0.3369



0.0000, 0.0000, 0.0000



21.4041, 0.3127, 0.3290

Same Dimension

The Same Dimension uses a secret algorithm to generate beautiful new colors.



55.0891, 0.3485, 0.3540



77.0929, 0.3583, 0.3601



65.2656, 0.3437, 0.3782



13.3882, 0.3279, 0.3401



14.5990, 0.5466, 0.4042



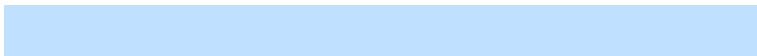
1.0457, 0.5189, 0.4262

Inverse Universe

The Inverse Universe completely reimagines the original color for something new.



52.1588, 0.2806, 0.3026



71.9597, 0.2729, 0.2957



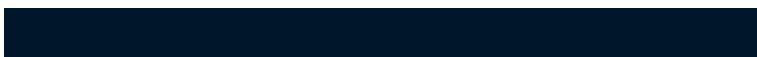
43.2424, 0.2788, 0.2746



13.0728, 0.2982, 0.3176



10.1395, 0.1796, 0.1665



0.7769, 0.1880, 0.1967

Previews

White Background



This preview shows how the Yxy color 55.0866, 0.3485, 0.3540 looks on a white background.

Color Contrast Check

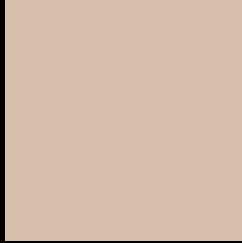
Large Text (above 18pt) WCAG AA × Fail

Any Text WCAG AA × Fail

Large Text (above 18pt) WCAG AAA × Fail

Any Text WCAG AAA × Fail

Black Background



This preview shows how the Yxy color 55.0866, 0.3485, 0.3540 looks on a black background.

Color Contrast Check

Large Text (above 18pt) WCAG AA ✓ Pass

Any Text WCAG AA ✓ Pass

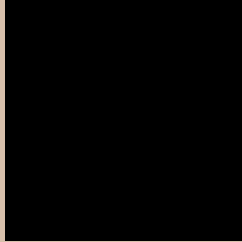
Large Text (above 18pt) WCAG AAA ✓ Pass

Any Text WCAG AAA ✓ Pass

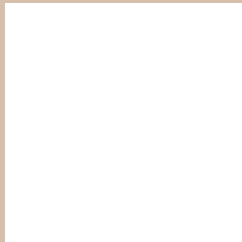
If you want to check with other color combinations, try the [Color Contrast Checker](#).

Yxy 55.0866, 0.3485, 0.3540

Background



This preview shows how black text looks on a background with the Yxy color 55.0866, 0.3485, 0.3540.



This preview shows how white text looks on a background with the Yxy color 55.0866, 0.3485, 0.3540.

Color Blindness Simulation

Color vision deficiency is a very complex topic, and I could not describe the different causes any better than Wikipedia does, so if you want to learn more, you should check out their [article about color blindness](#).

Dichromacy



Original Color

55.0866, 0.3485, 0.3540

Protanopia

55.0265, 0.3377, 0.3558

Deuteranopia

55.2210, 0.3561, 0.3488



Tritanopia

54.8650, 0.3276, 0.3118

Trichromacy



Original Color

55.0866, 0.3485, 0.3540

Protanomaly

55.1174, 0.3421, 0.3555

Deuteranomaly

55.1776, 0.3533, 0.3501

Tritanomaly

55.0622, 0.3354, 0.3267

Monochromacy



Original Color

55.0866, 0.3485, 0.3540

Achromatopsia

55.2011, 0.3127, 0.3290

Achromatomaly

55.3146, 0.3252, 0.3387

CSS Examples

Text

The CSS property to change the color of the text to Yxy 55.0866, 0.3485, 0.3540 is called "color". The color property can be set on classes, ids or directly on the HTML element.

This example shows how text in the color `rgb(215, 192, 171)` looks like.

```
.text, #text, p{  
    color:rgb(215, 192, 171)  
}
```

If you want to add a text shadow in that color use the text-shadow property, you can generate a text shadow directly with our [CSS Text Shadow Generator](#).

Here you see how black text with a 4 pixel rgb(215, 192, 171) colored shadow looks like.

```
.shadow{ text-shadow: 4px 4px 2px rgb(215, 192, 171) }
```

Border

The CSS property to change the border of an element to Yxy 55.0866, 0.3485, 0.3540 is called "border". The border property can be set on classes, ids or directly on the HTML element.

This example shows the color as border, it can be applied via the CSS property "border" or "border-color".

```
.border, #border, table{ border:4px solid rgb(215, 192, 171) }
```

If only the border color should be changed use the property `border-color`.

```
.border{ border-color:rgb(215, 192, 171) }
```

If you want to add a box shadow in that color use:

Here you see how a box with a 4 pixel `rgb(215, 192, 171)` colored shadow looks like.

```
.boxshadow{ -moz-box-shadow:4px 4px 4px  
4px rgb(215, 192, 171); -webkit-box-  
shadow:4px 4px 4px 4px rgb(215, 192, 171);  
box-shadow:4px 4px 4px 4px rgb(215, 192,  
171) }
```


Background

The CSS property to change the background color of an element to Yxy 55.0866, 0.3485, 0.3540 is called "background". The background property can be set on classes, ids or directly on the HTML element.

```
.background, #background, body{  
background: rgb(215, 192, 171) }
```

If only the background color should be changed can be used:

```
.background{ background-color: rgb(215,  
192, 171) }
```

This example shows the color as background, it is applied via the CSS property "background".

To optimize and compress your CSS code, you can use our [online CSS compressor and optimizer](#) based on csstidy. If you want to create a linear or radial gradient as background or border, check our [CSS Gradient Generator](#).

Hey! You found this booklet interesting? Support Converting Colors with the new Membership Option!

The pro membership hides all ads, plus gives you double the colors in the color bucket, and more awesome pro features!

[Learn more, Memberships starting at \\$2.50/m!](#)

**Follow me
on Twitter!**

@ConvertingColor