

Converting Colors

$Y_{xy}(55.2525, 0.3210, 0.3211)$

Have a look what the booklet for
Yxy(55.2525, 0.3210, 0.3211)
contains.

Yxy(55.2327, 0.3204, 0.3208)	3
<i>Conversions</i>	4
<i>Details</i>	6
<i>Harmonies</i>	12
<i>Previews</i>	24
<i>Color Blindness Simulation</i>	27
<i>CSS Examples</i>	30

Color

Yxy(55.2327, 0.3204, 0.3208)

Conversions

Conversions Part 1

Format	Color
Hex	D0C0C7
RGB	208, 192, 199
RGB Percent	82%, 75%, 78%
CMY	0.1844, 0.2470, 0.2197
CMYK	0.00, 0.08, 0.04, 0.18
HSL	334°, 15%, 78%
HSV	334°, 8%, 82%
XYZ	55.1638, 55.2327, 61.7752
YIQ	197.5820, 7.2890, 5.5690

Conversions

Conversions Part 2

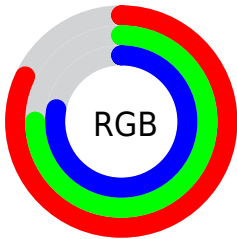
Format	Color
R _Y B	208, 192, 199
Decimal	13680839
CIE Lab	79.18, 6.83, -1.47
CIE LCh	79, 6.990, 347.818
Yxy	55.2327, 0.3204, 0.3208
Android (android.graphics.Color)	4291870919 (0xFFD0C0C7)
YUV	197.5820, 0.6991, 9.1366
Hunter-Lab	74.3187, 2.4357, 2.7400

Details

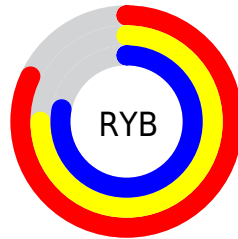
The Yxy color $55.2327, 0.3204, 0.3208$ is a light color, and the websafe version is hex `CCCCCC`. A complement of this color would be $60.5257, 0.3056, 0.3373$, and the grayscale version is $56.1966, 0.3127, 0.3290$.

A 20% lighter version of the original color is $95.6148, 0.3130, 0.3223$, and $27.3796, 0.3230, 0.3196$ is the 20% darker color. If you saturate the color by 10%, you get $46.2137, 0.3323, 0.3096$, and if you desaturate by 10%, it is $65.5890, 0.3106, 0.3314$.

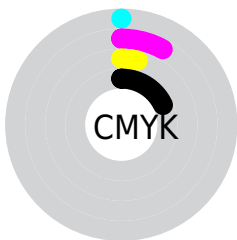
Distribution



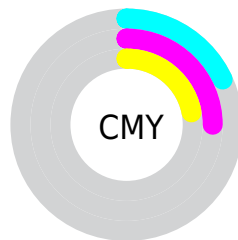
- Red (82%)
- Green (75%)
- Blue (78%)



- Red (82%)
- Yellow (75%)
- Blue (78%)



- Cyan (0%)
- Magenta (8%)
- Yellow (4%)
- Black (18%)



- Cyan (18%)
- Magenta (25%)
- Yellow (22%)

Brightness & Saturation Gradients

These gradients show how the Yxy color 55.2327, 0.3204, 0.3208 changes by changing the brightness by 10 percent. The first figure shows a shift by +10% for each color and the second figure -10%.

Similar to the brightness gradients but the following saturation gradients show a change of the Yxy color 55.2327, 0.3204, 0.3208 by changing the saturation by 10% instead.

■ 55.2327, 0.3204,
0.3208

■ 55.2327, 0.3204,
0.3208

406.7934, 0.3167,
0.3248

■ 39.5881, 0.3213,
0.3198

■ 97.8818, 0.3191,
0.3222

■ 27.2175, 0.3224,
0.3186

125.6551, 0.3186,
0.3228

■ 17.7366, 0.3239,
0.3171

158.2400, 0.3181,
0.3232

■ 10.7611, 0.3259,
0.3150

196.0210, 0.3178,
0.3236

■ 5.9064, 0.3288,
0.3119

239.3824, 0.3174,
0.3240

■ 2.7883, 0.3333,
0.3072

288.7087, 0.3172,

■ 1.0222, 0.3412,

0.3243

0.2989

344.3842, 0.3169,
0.3245

0.0000, 0.9560,
0.0000

0.0000, 0.0000,
0.0000

55.2327, 0.3204,
0.3208

55.2327, 0.3204,
0.3208

46.2137, 0.3323,
0.3096

65.5890, 0.3106,
0.3314

38.4701, 0.3467,
0.2979

77.3269, 0.3026,
0.3412

31.9456, 0.3639,
0.2862

90.4976, 0.2959,
0.3503

26.5770, 0.3843,
0.2750

91.5713, 0.2897,
0.3384

■ 22.2954, 0.4078,
0.2654

■ 92.1464, 0.2849,
0.3289

■ 19.0244, 0.4341,
0.2584

■ 16.6776, 0.4624,
0.2553

■ 15.1539, 0.4911,
0.2572

■ 14.3109, 0.5183,
0.2644

Harmonies

Analogous

The Analogous color harmony consists of three colors that are next to each other on the color wheel.



55.2327, 0.3111, 0.3153



55.2327, 0.3204, 0.3208



55.2327, 0.3277, 0.3285

Triad

The Triadic color harmony groups three colors that are evenly spaced from another and form a triangle on the color wheel.



55.2327, 0.3204, 0.3208



55.2327, 0.3229, 0.3451



55.2327, 0.2949, 0.3212

Complementary

The Complementary color scheme is a pair of colors which are on the opposite of each other on the color wheel.



55.2327, 0.3204, 0.3208



60.5257, 0.3056, 0.3373

Split Complementary

Split-complementary colors differ from the complementary color scheme. The scheme consists of three colors, the original color and two neighbors of the complement color.



55.2327, 0.2980, 0.3293



55.2327, 0.3204, 0.3208



55.2327, 0.3141, 0.3433

Square

The Square scheme is like the rectangle color scheme, but the four colors are evenly spaced on the color wheel.



55.2327, 0.3204, 0.3208



55.2327, 0.3291, 0.3426



55.2327, 0.3050, 0.3374



55.2327, 0.2965, 0.3154

Rectangle

The Rectangle color scheme consists of four colors that form a rectangle on the color wheel.



55.2327, 0.3204, 0.3208



55.2327, 0.3303, 0.3339



55.2327, 0.3050, 0.3374



55.2327, 0.2954, 0.3237

Sweetspot

The Sweet Spot groups the original color and five complimentary colors.



55.2351, 0.3204, 0.3208



96.6054, 0.3146, 0.3269



54.6478, 0.3079, 0.3100



20.7131, 0.3145, 0.3270



0.0000, 0.0000, 0.0000



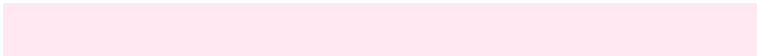
21.4041, 0.3127, 0.3290

Same Dimension

The Same Dimension uses a secret algorithm to generate beautiful new colors.



55.2351, 0.3204, 0.3208



85.4163, 0.3220, 0.3192



55.2703, 0.3257, 0.3300



11.8927, 0.3223, 0.3189



8.8451, 0.5211, 0.2644



0.5104, 0.4753, 0.2392

Inverse Universe

The Inverse Universe completely reimagines the original color for something new.



55.2351, 0.3204, 0.3208



85.4163, 0.3220, 0.3192



60.4731, 0.3009, 0.3280



11.8927, 0.3223, 0.3189



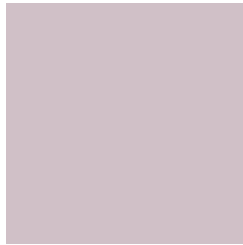
8.8451, 0.5211, 0.2644



0.5104, 0.4753, 0.2392

Previews

White Background



This preview shows how the Yxy color 55.2327, 0.3204, 0.3208 looks on a white background.

Color Contrast Check

Large Text (above 18pt) WCAG AA × Fail

Any Text WCAG AA × Fail

Large Text (above 18pt) WCAG AAA × Fail

Any Text WCAG AAA × Fail

Black Background



This preview shows how the Yxy color 55.2327, 0.3204, 0.3208 looks on a black background.

Color Contrast Check

Large Text (above 18pt) WCAG AA ✓ Pass

Any Text WCAG AA ✓ Pass

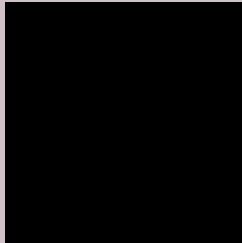
Large Text (above 18pt) WCAG AAA ✓ Pass

Any Text WCAG AAA ✓ Pass

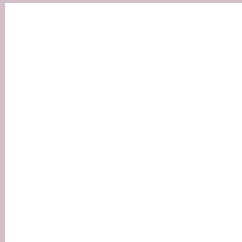
If you want to check with other color combinations, try the [Color Contrast Checker](#).

Yxy 55.2327, 0.3204, 0.3208

Background



This preview shows how black text looks on a background with the Yxy color 55.2327, 0.3204, 0.3208.



This preview shows how white text looks on a background with the Yxy color 55.2327, 0.3204, 0.3208.

Color Blindness Simulation

Color vision deficiency is a very complex topic, and I could not describe the different causes any better than Wikipedia does, so if you want to learn more, you should check out their [article about color blindness](#).

Dichromacy



Original Color

55.2327, 0.3204, 0.3208

Protanopia

55.2530, 0.3107, 0.3218

Deuteranopia

55.2466, 0.3255, 0.3186



Tritanopia

55.2731, 0.3160, 0.3115

Trichromacy



Original Color

55.2327, 0.3204, 0.3208

Protanomaly

55.3103, 0.3147, 0.3218

Deuteranomaly

55.3822, 0.3238, 0.3197

Tritanomaly

55.1287, 0.3182, 0.3150

Monochromacy



Original Color

55.2327, 0.3204, 0.3208

Achromatopsia

56.4712, 0.3127, 0.3290

Achromatomaly

56.1136, 0.3160, 0.3266

CSS Examples

Text

The CSS property to change the color of the text to Yxy 55.2327, 0.3204, 0.3208 is called "color". The color property can be set on classes, ids or directly on the HTML element.

This example shows how text in the color `rgb(208, 192, 199)` looks like.

```
.text, #text, p{  
    color:rgb(208, 192, 199)  
}
```

If you want to add a text shadow in that color use the text-shadow property, you can generate a text shadow directly with our [CSS Text Shadow Generator](#).

Here you see how black text with a 4 pixel rgb(208, 192, 199) colored shadow looks like.

```
.shadow{ text-shadow: 4px 4px 2px rgb(208, 192, 199) }
```

Border

The CSS property to change the border of an element to Yxy 55.2327, 0.3204, 0.3208 is called "border". The border property can be set on classes, ids or directly on the HTML element.

This example shows the color as border, it can be applied via the CSS property "border" or "border-color".

```
.border, #border, table{ border:4px solid rgb(208, 192, 199) }
```

If only the border color should be changed use the property `border-color`.

```
.border{ border-color:rgb(208, 192, 199) }
```

If you want to add a box shadow in that color use:

Here you see how a box with a 4 pixel `rgb(208, 192, 199)` colored shadow looks like.

```
.boxshadow{ -moz-box-shadow:4px 4px 4px  
4px rgb(208, 192, 199); -webkit-box-  
shadow:4px 4px 4px 4px rgb(208, 192, 199);  
box-shadow:4px 4px 4px 4px rgb(208, 192,  
199) }
```


Background

The CSS property to change the background color of an element to Yxy 55.2327, 0.3204, 0.3208 is called "background". The background property can be set on classes, ids or directly on the HTML element.

```
.background, #background, body{  
background: rgb(208, 192, 199) }
```

If only the background color should be changed can be used:

```
.background{ background-color: rgb(208,  
192, 199) }
```

This example shows the color as background, it is applied via the CSS property "background".

To optimize and compress your CSS code, you can use our [online CSS compressor and optimizer](#) based on csstidy. If you want to create a linear or radial gradient as background or border, check our [CSS Gradient Generator](#).

Hey! You found this booklet interesting? Support Converting Colors with the new Membership Option!

The pro membership hides all ads, plus gives you double the colors in the color bucket, and more awesome pro features!

[Learn more, Memberships starting at \\$2.50/m!](#)

**Follow me
on Twitter!**

@ConvertingColor