

Converting Colors

Yxy(55.2615, 0.3398, 0.3404)

Have a look what the booklet for
Yxy(55.2615, 0.3398, 0.3404)
contains.

Yxy(55.0861, 0.3398, 0.3397)	3
<i>Conversions</i>	4
<i>Details</i>	6
<i>Harmonies</i>	12
<i>Previews</i>	24
<i>Color Blindness Simulation</i>	27
<i>CSS Examples</i>	30

Color

Yxy(55.0861, 0.3398, 0.3397)

Conversions

Conversions Part 1

Format	Color
Hex	D7BFB6
RGB	215, 191, 182
RGB Percent	84%, 75%, 71%
CMY	0.1568, 0.2510, 0.2864
CMYK	0.00, 0.11, 0.15, 0.16
HSL	16°, 29%, 78%
HSV	16°, 15%, 84%
XYZ	55.1023, 55.0861, 51.9726
YIQ	197.1500, 17.1930, 2.2890

Conversions

Conversions Part 2

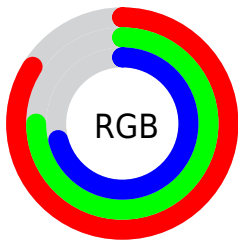
Format	Color
R _Y B	215, 194, 182
Decimal	14139318
CIE Lab	79.09, 7.04, 7.65
CIE LCh	79, 10.394, 47.363
Yxy	55.0861, 0.3398, 0.3397
Android (android.graphics.Color)	4292329398 (0xFFD7BFB6)
YUV	197.1500, -7.4689, 15.6545
Hunter-Lab	74.2200, 2.6367, 10.4361

Details

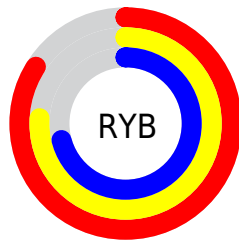
The Yxy color **55.0861, 0.3398, 0.3397** is a light color, and the websafe version is hex **CCCCCC**. A complement of this color would be **58.9961, 0.2891, 0.3181**, and the grayscale version is **55.9705, 0.3127, 0.3290**.

A 20% lighter version of the original color is **93.9546, 0.3233, 0.3378**, and **27.2355, 0.3471, 0.3432** is the 20% darker color. If you saturate the color by 10%, you get **47.8079, 0.3618, 0.3472**, and if you desaturate by 10%, it is **63.2337, 0.3213, 0.3326**.

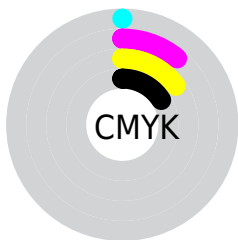
Distribution



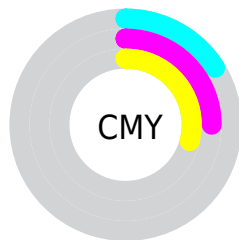
- Red (84%)
- Green (75%)
- Blue (71%)



- Red (84%)
- Yellow (76%)
- Blue (71%)



- Cyan (0%)
- Magenta (11%)
- Yellow (15%)
- Black (16%)





- Cyan (16%)
- Magenta (25%)
- Yellow (29%)

Brightness & Saturation Gradients

These gradients show how the Yxy color 55.0861, 0.3398, 0.3397 changes by changing the brightness by 10 percent. The first figure shows a shift by +10% for each color and the second figure -10%.


Similar to the brightness gradients but the following saturation gradients show a change of the Yxy color 55.0861, 0.3398, 0.3397 by changing the saturation by 10% instead.


 55.0861, 0.3398,
0.3397

 55.0861, 0.3398,
0.3397

406.2382, 0.3266,
0.3346

 39.4707, 0.3430,
0.3409


 97.6671, 0.3351,
0.3379

 27.1261, 0.3471,
0.3424


125.4014, 0.3333,
0.3372

 17.6679, 0.3524,
0.3442


157.9442, 0.3317,
0.3367

 10.7118, 0.3598,
0.3467

195.6798, 0.3304,
0.3361

 5.8734, 0.3703,
0.3502

238.9926, 0.3293,
0.3357

 2.7683, 0.3870,
0.3552

288.2670, 0.3282,

 1.0120, 0.4249,

0.3353

0.3700

343.8874, 0.3274,
0.3350

0.0000, 1.0000,
0.0000

0.0000, 0.0000,
0.0000

55.0861, 0.3398,
0.3397

55.0861, 0.3398,
0.3397

47.8079, 0.3618,
0.3472

63.2337, 0.3213,
0.3326

41.3626, 0.3878,
0.3548

72.2708, 0.3059,
0.3260

35.7222, 0.4181,
0.3620

82.2261, 0.2929,
0.3199

30.8542, 0.4526,
0.3682

92.2597, 0.2888,
0.3274

■ 26.7237, 0.4901,
0.3724

■ 93.1910, 0.2889,
0.3289

■ 23.2931, 0.5285,
0.3734

■ 20.5209, 0.5641,
0.3702

■ 18.3606, 0.5930,
0.3626

■ 17.5467, 0.6042,
0.3584

Harmonies

Analogous

The Analogous color harmony consists of three colors that are next to each other on the color wheel.



55.0861, 0.3349, 0.3279



55.0861, 0.3398, 0.3397



55.0861, 0.3373, 0.3490

Triad

The Triadic color harmony groups three colors that are evenly spaced from another and form a triangle on the color wheel.



55.0861, 0.3398, 0.3397



55.0861, 0.3013, 0.3418



55.0861, 0.2972, 0.3057

Complementary

The Complementary color scheme is a pair of colors which are on the opposite of each other on the color wheel.



55.0861, 0.3398, 0.3397



58.9961, 0.2891, 0.3181

Split Complementary

Split-complementary colors differ from the complementary color scheme. The scheme consists of three colors, the original color and two neighbors of the complement color.



55.0861, 0.2886, 0.3088



55.0861, 0.3398, 0.3397



55.0861, 0.2910, 0.3295

Square

The Square scheme is like the rectangle color scheme, but the four colors are evenly spaced on the color wheel.



55.0861, 0.3398, 0.3397



55.0861, 0.3149, 0.3505



55.0861, 0.2864, 0.3174



55.0861, 0.3101, 0.3087

Rectangle

The Rectangle color scheme consists of four colors that form a rectangle on the color wheel.



55.0861, 0.3398, 0.3397



55.0861, 0.3317, 0.3524



55.0861, 0.2864, 0.3174



55.0861, 0.2938, 0.3061

Sweetspot

The Sweet Spot groups the original color and five complimentary colors.



55.0886, 0.3398, 0.3397



93.4331, 0.3208, 0.3324



52.3651, 0.3214, 0.3010



19.8068, 0.3220, 0.3329



0.0000, 0.0000, 0.0000



21.4041, 0.3127, 0.3290

Same Dimension

The Same Dimension uses a secret algorithm to generate beautiful new colors.



55.0886, 0.3398, 0.3397



77.9131, 0.3456, 0.3418



62.6060, 0.3369, 0.3584



12.9668, 0.3284, 0.3354



10.6446, 0.6016, 0.3605



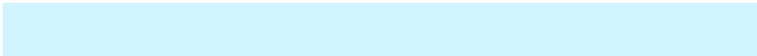
0.7801, 0.5671, 0.3879

Inverse Universe

The Inverse Universe completely reimagines the original color for something new.



58.9961, 0.2891, 0.3181



84.5760, 0.2848, 0.3159



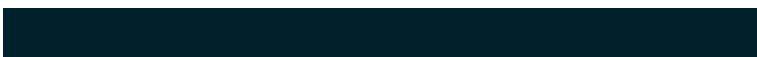
51.5431, 0.2883, 0.2978



13.5079, 0.2982, 0.3225



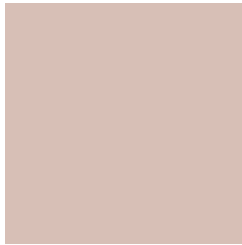
17.4054, 0.1996, 0.2384



1.1843, 0.2044, 0.2559

Previews

White Background



This preview shows how the Yxy color 55.0861, 0.3398, 0.3397 looks on a white background.

Color Contrast Check

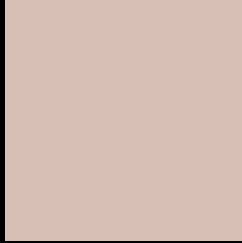
Large Text (above 18pt) WCAG AA × Fail

Any Text WCAG AA × Fail

Large Text (above 18pt) WCAG AAA × Fail

Any Text WCAG AAA × Fail

Black Background



This preview shows how the Yxy color 55.0861, 0.3398, 0.3397 looks on a black background.

Color Contrast Check

Large Text (above 18pt) WCAG AA ✓ Pass

Any Text WCAG AA ✓ Pass

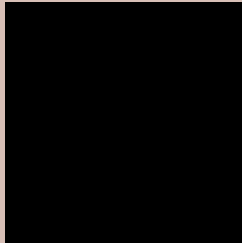
Large Text (above 18pt) WCAG AAA ✓ Pass

Any Text WCAG AAA ✓ Pass

If you want to check with other color combinations, try the [Color Contrast Checker](#).

Yxy 55.0861, 0.3398, 0.3397

Background



This preview shows how black text looks on a background with the Yxy color 55.0861, 0.3398, 0.3397.



This preview shows how white text looks on a background with the Yxy color 55.0861, 0.3398, 0.3397.

Color Blindness Simulation

Color vision deficiency is a very complex topic, and I could not describe the different causes any better than Wikipedia does, so if you want to learn more, you should check out their [article about color blindness](#).

Dichromacy



Original Color

55.0861, 0.3398, 0.3397

Protanopia

55.0475, 0.3267, 0.3424

Deuteranopia

54.9882, 0.3444, 0.3372



Tritanopia

55.1837, 0.3259, 0.3118

Trichromacy



Original Color

55.0861, 0.3398, 0.3397

Protanomaly

55.2679, 0.3317, 0.3423

Deuteranomaly

55.1097, 0.3425, 0.3384

Tritanomaly

55.0870, 0.3313, 0.3221

Monochromacy



Original Color

55.0861, 0.3398, 0.3397

Achromatopsia

55.8340, 0.3127, 0.3290

Achromatomaly

55.6734, 0.3222, 0.3326

CSS Examples

Text

The CSS property to change the color of the text to Yxy 55.0861, 0.3398, 0.3397 is called "color". The color property can be set on classes, ids or directly on the HTML element.

This example shows how text in the color `rgb(215, 191, 182)` looks like.

```
.text, #text, p{  
    color:rgb(215, 191, 182)  
}
```

If you want to add a text shadow in that color use the text-shadow property, you can generate a text shadow directly with our [CSS Text Shadow Generator](#).

Here you see how black text with a 4 pixel rgb(215, 191, 182) colored shadow looks like.

```
.shadow{ text-shadow: 4px 4px 2px rgb(215, 191, 182) }
```

Border

The CSS property to change the border of an element to Yxy 55.0861, 0.3398, 0.3397 is called "border". The border property can be set on classes, ids or directly on the HTML element.

This example shows the color as border, it can be applied via the CSS property "border" or "border-color".

```
.border, #border, table{ border:4px solid rgb(215, 191, 182) }
```

If only the border color should be changed use the property `border-color`.

```
.border{ border-color:rgb(215, 191, 182) }
```

If you want to add a box shadow in that color use:

Here you see how a box with a 4 pixel `rgb(215, 191, 182)` colored shadow looks like.

```
.boxshadow{ -moz-box-shadow:4px 4px 4px  
4px rgb(215, 191, 182); -webkit-box-  
shadow:4px 4px 4px 4px rgb(215, 191, 182);  
box-shadow:4px 4px 4px 4px rgb(215, 191,  
182) }
```


Background

The CSS property to change the background color of an element to Yxy 55.0861, 0.3398, 0.3397 is called "background". The background property can be set on classes, ids or directly on the HTML element.

```
.background, #background, body{  
background: rgb(215, 191, 182) }
```

If only the background color should be changed can be used:

```
.background{ background-color: rgb(215,  
191, 182) }
```

This example shows the color as background, it is applied via the CSS property "background".

To optimize and compress your CSS code, you can use our [online CSS compressor and optimizer](#) based on csstidy. If you want to create a linear or radial gradient as background or border, check our [CSS Gradient Generator](#).

Hey! You found this booklet interesting? Support Converting Colors with the new Membership Option!

The pro membership hides all ads, plus gives you double the colors in the color bucket, and more awesome pro features!

[Learn more, Memberships starting at \\$2.50/m!](#)

**Follow me
on Twitter!**

@ConvertingColor