

Converting Colors

$Yxy(55.4871, 0.3396, 0.3310)$

Have a look what the booklet for
Yxy(55.4871, 0.3396, 0.3310)
contains.

Yxy(55.6734, 0.3393, 0.3314)	3
Conversions	4
Details	6
Harmonies	12
Previews	24
Color Blindness Simulation	27
CSS Examples	30

Color

Yxy(55.6734, 0.3393, 0.3314)

Conversions

Conversions Part 1

Format	Color
Hex	DCBEBC
RGB	220, 190, 188
RGB Percent	86%, 75%, 74%
CMY	0.1373, 0.2548, 0.2627
CMYK	0.00, 0.14, 0.15, 0.14
HSL	4°, 31%, 80%
HSV	4°, 15%, 86%
XYZ	57.0006, 55.6734, 55.3206
YIQ	198.7420, 18.5220, 5.7380

Conversions

Conversions Part 2

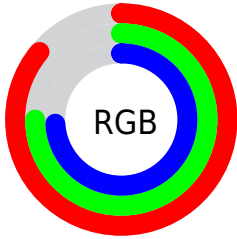
Format	Color
R _Y B	220, 190, 188
Decimal	14466748
CIE Lab	79.43, 10.32, 4.94
CIE LCh	79, 11.444, 25.576
Yxy	55.6734, 0.3393, 0.3314
Android (android.graphics.Color)	4292656828 (0xFFDCBEBC)
YUV	198.7420, -5.2958, 18.6433
Hunter-Lab	74.6146, 5.7865, 8.2716

Details

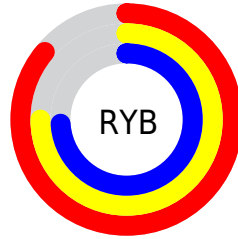
The Yxy color **55.6734, 0.3393, 0.3314** is a light color, and the websafe version is hex **FFCCCC**. A complement of this color would be **65.9838, 0.2906, 0.3266**, and the grayscale version is **56.9720, 0.3127, 0.3290**.

A 20% lighter version of the original color is **93.7032, 0.3197, 0.3310**, and **27.6399, 0.3465, 0.3322** is the 20% darker color. If you saturate the color by 10%, you get **46.4898, 0.3630, 0.3332**, and if you desaturate by 10%, it is **66.2697, 0.3201, 0.3297**.

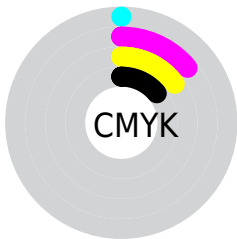
Distribution



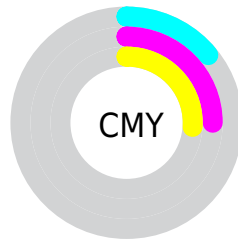
- Red (86%)
- Green (75%)
- Blue (74%)



- Red (86%)
- Yellow (75%)
- Blue (74%)



- Cyan (0%)
- Magenta (14%)
- Yellow (15%)
- Black (14%)




- Cyan (14%)
- Magenta (25%)
- Yellow (26%)

Brightness & Saturation Gradients


These gradients show how the Yxy color 55.6734, 0.3393, 0.3314 changes by changing the brightness by 10 percent. The first figure shows a shift by +10% for each color and the second figure -10%.


Similar to the brightness gradients but the following saturation gradients show a change of the Yxy color 55.6734, 0.3393, 0.3314 by changing the saturation by 10% instead.

 55.6734, 0.3393,
0.3314

 55.6734, 0.3393,
0.3314

408.4595, 0.3263,
0.3304

 39.9411, 0.3424,
0.3316


 98.5269, 0.3347,
0.3311

 27.4926, 0.3464,
0.3319


126.4169, 0.3329,
0.3309

 17.9436, 0.3517,
0.3322

159.1283, 0.3314,
0.3308

 10.9095, 0.3588,
0.3325

197.0454, 0.3301,
0.3307

 6.0060, 0.3691,
0.3328

240.5527, 0.3290,
0.3306

 2.8487, 0.3853,
0.3331

290.0346, 0.3280,

 1.0533, 0.4156,

0.3305

345.8754, 0.3271,
0.3304

0.3338

0.0000, 1.0000,
0.0000

0.0000, 0.0000,
0.0000

55.6734, 0.3393,
0.3314

55.6734, 0.3393,
0.3314

46.4898, 0.3630,
0.3332

66.2697, 0.3201,
0.3297

38.6522, 0.3923,
0.3350

78.3269, 0.3047,
0.3282

32.0996, 0.4276,
0.3367

91.9003, 0.2922,
0.3268

26.7633, 0.4690,
0.3381

93.9520, 0.2917,
0.3289

■ 22.5685, 0.5147,
0.3388

■ 19.4318, 0.5606,
0.3384

■ 17.2587, 0.6003,
0.3368

■ 15.9377, 0.6272,
0.3341

■ 15.5213, 0.6363,
0.3330

Harmonies

Analogous

The Analogous color harmony consists of three colors that are next to each other on the color wheel.



55.6734, 0.3288, 0.3187



55.6734, 0.3393, 0.3314



55.6734, 0.3425, 0.3439

Triad

The Triadic color harmony groups three colors that are evenly spaced from another and form a triangle on the color wheel.



55.6734, 0.3393, 0.3314



55.6734, 0.3109, 0.3506



55.6734, 0.2883, 0.3053

Complementary

The Complementary color scheme is a pair of colors which are on the opposite of each other on the color wheel.



55.6734, 0.3393, 0.3314



65.9838, 0.2906, 0.3266

Split Complementary

Split-complementary colors differ from the complementary color scheme. The scheme consists of three colors, the original color and two neighbors of the complement color.



55.6734, 0.2838, 0.3131



55.6734, 0.3393, 0.3314



55.6734, 0.2966, 0.3396

Square

The Square scheme is like the rectangle color scheme, but the four colors are evenly spaced on the color wheel.



55.6734, 0.3393, 0.3314



55.6734, 0.3258, 0.3555



55.6734, 0.2868, 0.3257



55.6734, 0.2992, 0.3038

Rectangle

The Rectangle color scheme consists of four colors that form a rectangle on the color wheel.



55.6734, 0.3393, 0.3314



55.6734, 0.3400, 0.3504



55.6734, 0.2868, 0.3257



55.6734, 0.2860, 0.3072

Sweetspot

The Sweet Spot groups the original color and five complimentary colors.



55.6759, 0.3393, 0.3314



93.4123, 0.3193, 0.3296



56.2622, 0.3156, 0.2950



19.7369, 0.3206, 0.3298



0.0000, 0.0000, 0.0000



21.4041, 0.3127, 0.3290

Same Dimension

The Same Dimension uses a secret algorithm to generate beautiful new colors.



55.6759, 0.3393, 0.3314



74.2786, 0.3450, 0.3319



62.7880, 0.3367, 0.3491



13.1821, 0.3290, 0.3305



9.1669, 0.6352, 0.3339



0.6411, 0.6210, 0.3451

Inverse Universe

The Inverse Universe completely reimagines the original color for something new.



65.9838, 0.2906, 0.3266



90.9593, 0.2868, 0.3261



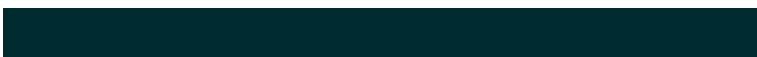
58.2832, 0.2900, 0.3080



14.6821, 0.2982, 0.3275



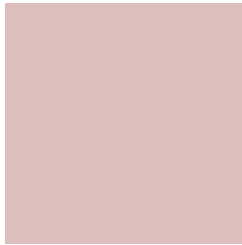
29.0510, 0.2193, 0.3094



1.9254, 0.2202, 0.3128

Previews

White Background



This preview shows how the Yxy color 55.6734, 0.3393, 0.3314 looks on a white background.

Color Contrast Check

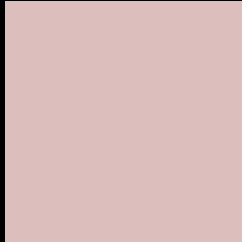
Large Text (above 18pt) WCAG AA × Fail

Any Text WCAG AA × Fail

Large Text (above 18pt) WCAG AAA × Fail

Any Text WCAG AAA × Fail

Black Background



This preview shows how the Yxy color 55.6734, 0.3393, 0.3314 looks on a black background.

Color Contrast Check

Large Text (above 18pt) WCAG AA ✓ Pass

Any Text WCAG AA ✓ Pass

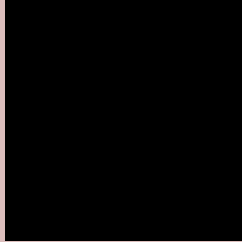
Large Text (above 18pt) WCAG AAA ✓ Pass

Any Text WCAG AAA ✓ Pass

If you want to check with other color combinations, try the [Color Contrast Checker](#).

Yxy 55.6734, 0.3393, 0.3314

Background



This preview shows how black text looks on a background with the Yxy color 55.6734, 0.3393, 0.3314.

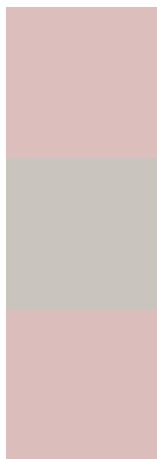


This preview shows how white text looks on a background with the Yxy color 55.6734, 0.3393, 0.3314.

Color Blindness Simulation

Color vision deficiency is a very complex topic, and I could not describe the different causes any better than Wikipedia does, so if you want to learn more, you should check out their [article about color blindness](#).

Dichromacy



Original Color

55.6734, 0.3393, 0.3314

Protanopia

55.7980, 0.3213, 0.3350

Deuteranopia

55.5178, 0.3385, 0.3314



Tritanopia

55.7603, 0.3300, 0.3131

Trichromacy



Original Color

55.6734, 0.3393, 0.3314

Protanomaly

55.8566, 0.3280, 0.3338

Deuteranomaly

55.5178, 0.3385, 0.3314

Tritanomaly

55.7986, 0.3331, 0.3199

Monochromacy



Original Color

55.6734, 0.3393, 0.3314

Achromatopsia

57.1125, 0.3127, 0.3290

Achromatomaly

56.6854, 0.3223, 0.3302

CSS Examples

Text

The CSS property to change the color of the text to Yxy 55.6734, 0.3393, 0.3314 is called "color". The color property can be set on classes, ids or directly on the HTML element.

This example shows how text in the color `rgb(220, 190, 188)` looks like.

```
.text, #text, p{  
    color:rgb(220, 190, 188)  
}
```

If you want to add a text shadow in that color use the text-shadow property, you can generate a text shadow directly with our [CSS Text Shadow Generator](#).

Here you see how black text with a 4 pixel rgb(220, 190, 188) colored shadow looks like.

```
.shadow{ text-shadow: 4px 4px 2px rgb(220, 190, 188) }
```

Border

The CSS property to change the border of an element to Yxy 55.6734, 0.3393, 0.3314 is called "border". The border property can be set on classes, ids or directly on the HTML element.

This example shows the color as border, it can be applied via the CSS property "border" or "border-color".

```
.border, #border, table{ border:4px solid rgb(220, 190, 188) }
```

If only the border color should be changed use the property `border-color`.

```
.border{ border-color:rgb(220, 190, 188) }
```

If you want to add a box shadow in that color use:

Here you see how a box with a 4 pixel `rgb(220, 190, 188)` colored shadow looks like.

```
.boxshadow{ -moz-box-shadow:4px 4px 4px 4px rgb(220, 190, 188); -webkit-box-shadow:4px 4px 4px 4px rgb(220, 190, 188); box-shadow:4px 4px 4px 4px rgb(220, 190, 188) }
```


Background

The CSS property to change the background color of an element to Yxy 55.6734, 0.3393, 0.3314 is called "background". The background property can be set on classes, ids or directly on the HTML element.

```
.background, #background, body{  
background: rgb(220, 190, 188) }
```

If only the background color should be changed can be used:

```
.background{ background-color: rgb(220,  
190, 188) }
```

This example shows the color as background, it is applied via the CSS property "background".

To optimize and compress your CSS code, you can use our [online CSS compressor and optimizer](#) based on csstidy. If you want to create a linear or radial gradient as background or border, check our [CSS Gradient Generator](#).

Hey! You found this booklet interesting? Support Converting Colors with the new Membership Option!

The pro membership hides all ads, plus gives you double the colors in the color bucket, and more awesome pro features!

[Learn more, Memberships starting at \\$2.50/m!](#)

**Follow me
on Twitter!**

@ConvertingColor