

Converting Colors

$Yxy(55.6224, 0.3309, 0.3204)$

Have a look what the booklet for
Yxy(55.6224, 0.3309, 0.3204)
contains.

Yxy(55.7636, 0.3304, 0.3210)	3
Conversions	4
Details	6
Harmonies	12
Previews	24
Color Blindness Simulation	27
CSS Examples	30

Color

Yxy(55.7636, 0.3304, 0.3210)

Conversions

Conversions Part 1

Format	Color
Hex	DABEC5
RGB	218, 190, 197
RGB Percent	85%, 75%, 77%
CMY	0.1452, 0.2548, 0.2275
CMYK	0.00, 0.13, 0.10, 0.15
HSL	345°, 27%, 80%
HSV	345°, 13%, 85%
XYZ	57.3966, 55.7636, 60.5582
YIQ	199.1700, 14.4410, 8.1130

Conversions

Conversions Part 2

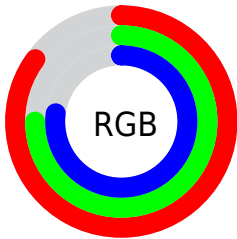
Format	Color
R _Y B	218, 190, 197
Decimal	14335685
CIE Lab	79.48, 11.07, 0.14
CIE LCh	79, 11.076, 0.743
Yxy	55.7636, 0.3304, 0.3210
Android (android.graphics.Color)	4292525765 (0xFFDABEC5)
YUV	199.1700, -1.0698, 16.5139
Hunter-Lab	74.6750, 6.5170, 4.1909

Details

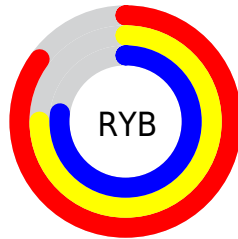
The Yxy color **55.7636, 0.3304, 0.3210** is a light color, and the websafe version is hex **CCCCCC**. A complement of this color would be **65.7770, 0.2976, 0.3372**, and the grayscale version is **57.2220, 0.3127, 0.3290**.

A 20% lighter version of the original color is **94.3273, 0.3137, 0.3214**, and **27.6610, 0.3355, 0.3199** is the 20% darker color. If you saturate the color by 10%, you get **46.3089, 0.3479, 0.3143**, and if you desaturate by 10%, it is **66.7166, 0.3162, 0.3273**.

Distribution



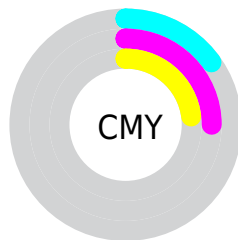
- Red (85%)
- Green (75%)
- Blue (77%)



- Red (85%)
- Yellow (75%)
- Blue (77%)



- Cyan (0%)
- Magenta (13%)
- Yellow (10%)
- Black (15%)





- Cyan (15%)
- Magenta (25%)
- Yellow (23%)

Brightness & Saturation Gradients


These gradients show how the Yxy color 55.7636, 0.3304, 0.3210 changes by changing the brightness by 10 percent. The first figure shows a shift by +10% for each color and the second figure -10%.


Similar to the brightness gradients but the following saturation gradients show a change of the Yxy color 55.7636, 0.3304, 0.3210 by changing the saturation by 10% instead.

 55.7636, 0.3304,
0.3210

 55.7636, 0.3304,
0.3210


408.8000, 0.3218,
0.3249

 40.0134, 0.3325,
0.3201


 98.6589, 0.3273,
0.3224

 27.5490, 0.3351,
0.3189


126.5727, 0.3262,
0.3229

 17.9860, 0.3385,
0.3173


159.3099, 0.3252,
0.3234

 10.9399, 0.3432,
0.3152

197.2549, 0.3243,
0.3238

 6.0264, 0.3499,
0.3121

240.7920, 0.3236,
0.3241

 2.8612, 0.3603,
0.3074

290.3056, 0.3229,

 1.0597, 0.3789,

0.3244

0.2989

346.1801, 0.3223,
0.3247

0.0000, 1.0000,
0.0000

0.0000, 0.0000,
0.0000

55.7636, 0.3304,
0.3210

55.7636, 0.3304,
0.3210

46.3089, 0.3479,
0.3143

66.7166, 0.3162,
0.3273

38.2800, 0.3693,
0.3075

79.2215, 0.3047,
0.3331

31.6095, 0.3954,
0.3009

93.0776, 0.2953,
0.3381

26.2216, 0.4263,
0.2952

93.6401, 0.2906,
0.3289

■ 22.0332, 0.4619,
0.2911

■ 18.9510, 0.5005,
0.2899

■ 16.8680, 0.5395,
0.2924

■ 15.6555, 0.5745,
0.2991

■ 15.1704, 0.5956,
0.3055

Harmonies

Analogous

The Analogous color harmony consists of three colors that are next to each other on the color wheel.



55.7636, 0.3166, 0.3107



55.7636, 0.3304, 0.3210



55.7636, 0.3395, 0.3335

Triad

The Triadic color harmony groups three colors that are evenly spaced from another and form a triangle on the color wheel.



55.7636, 0.3304, 0.3210



55.7636, 0.3230, 0.3543



55.7636, 0.2850, 0.3120

Complementary

The Complementary color scheme is a pair of colors which are on the opposite of each other on the color wheel.



55.7636, 0.3304, 0.3210



65.7770, 0.2976, 0.3372

Split Complementary

Split-complementary colors differ from the complementary color scheme. The scheme consists of three colors, the original color and two neighbors of the complement color.



55.7636, 0.2866, 0.3235



55.7636, 0.3304, 0.3210



55.7636, 0.3084, 0.3484

Square

The Square scheme is like the rectangle color scheme, but the four colors are evenly spaced on the color wheel.



55.7636, 0.3304, 0.3210



55.7636, 0.3351, 0.3530



55.7636, 0.2951, 0.3370



55.7636, 0.2905, 0.3053

Rectangle

The Rectangle color scheme consists of four colors that form a rectangle on the color wheel.



55.7636, 0.3304, 0.3210



55.7636, 0.3416, 0.3416



55.7636, 0.2951, 0.3370



55.7636, 0.2847, 0.3154

Sweetspot

The Sweet Spot groups the original color and five complimentary colors.



55.7661, 0.3304, 0.3210



93.1807, 0.3178, 0.3266



55.7408, 0.3086, 0.2970



19.6786, 0.3188, 0.3261



0.0000, 0.0000, 0.0000



21.4041, 0.3127, 0.3290

Same Dimension

The Same Dimension uses a secret algorithm to generate beautiful new colors.



55.7661, 0.3304, 0.3210



76.2644, 0.3341, 0.3195



58.5535, 0.3349, 0.3371



13.1046, 0.3253, 0.3232



9.1065, 0.5920, 0.3035



0.6038, 0.5453, 0.2777

Inverse Universe

The Inverse Universe completely reimagines the original color for something new.



55.7661, 0.3304, 0.3210



76.2644, 0.3341, 0.3195



62.5876, 0.2930, 0.3207



13.1046, 0.3253, 0.3232



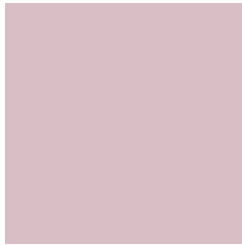
9.1065, 0.5920, 0.3035



0.6038, 0.5453, 0.2777

Previews

White Background



This preview shows how the Yxy color 55.7636, 0.3304, 0.3210 looks on a white background.

Color Contrast Check

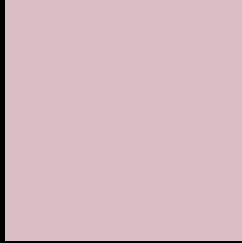
Large Text (above 18pt) WCAG AA × Fail

Any Text WCAG AA × Fail

Large Text (above 18pt) WCAG AAA × Fail

Any Text WCAG AAA × Fail

Black Background



This preview shows how the Yxy color 55.7636, 0.3304, 0.3210 looks on a black background.

Color Contrast Check

Large Text (above 18pt) WCAG AA ✓ Pass

Any Text WCAG AA ✓ Pass

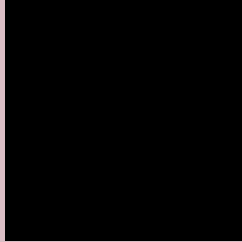
Large Text (above 18pt) WCAG AAA ✓ Pass

Any Text WCAG AAA ✓ Pass

If you want to check with other color combinations, try the [Color Contrast Checker](#).

Yxy 55.7636, 0.3304, 0.3210

Background



This preview shows how black text looks on a background with the Yxy color 55.7636, 0.3304, 0.3210.



This preview shows how white text looks on a background with the Yxy color 55.7636, 0.3304, 0.3210.

Color Blindness Simulation

Color vision deficiency is a very complex topic, and I could not describe the different causes any better than Wikipedia does, so if you want to learn more, you should check out their [article about color blindness](#).

Dichromacy



Original Color

55.7636, 0.3304, 0.3210

Protanopia

55.7921, 0.3121, 0.3242

Deuteranopia

55.8918, 0.3286, 0.3221



Tritanopia

55.8149, 0.3258, 0.3119

Trichromacy



Original Color

55.7636, 0.3304, 0.3210

Protanomaly

55.8289, 0.3186, 0.3231

Deuteranomaly

56.0445, 0.3295, 0.3221

Tritanomaly

55.6723, 0.3282, 0.3153

Monochromacy



Original Color

55.7636, 0.3304, 0.3210

Achromatopsia

57.1125, 0.3127, 0.3290

Achromatomaly

56.6789, 0.3192, 0.3267

CSS Examples

Text

The CSS property to change the color of the text to Yxy 55.7636, 0.3304, 0.3210 is called "color". The color property can be set on classes, ids or directly on the HTML element.

This example shows how text in the color `rgb(218, 190, 197)` looks like.

```
.text, #text, p{  
    color:rgb(218, 190, 197)  
}
```

If you want to add a text shadow in that color use the text-shadow property, you can generate a text shadow directly with our [CSS Text Shadow Generator](#).

Here you see how black text with a 4 pixel rgb(218, 190, 197) colored shadow looks like.

```
.shadow{ text-shadow: 4px 4px 2px rgb(218, 190, 197) }
```

Border

The CSS property to change the border of an element to Yxy 55.7636, 0.3304, 0.3210 is called "border". The border property can be set on classes, ids or directly on the HTML element.

This example shows the color as border, it can be applied via the CSS property "border" or "border-color".

```
.border, #border, table{ border:4px solid rgb(218, 190, 197) }
```

If only the border color should be changed use the property `border-color`.

```
.border{ border-color:rgb(218, 190, 197) }
```

If you want to add a box shadow in that color use:

Here you see how a box with a 4 pixel `rgb(218, 190, 197)` colored shadow looks like.

```
.boxshadow{ -moz-box-shadow:4px 4px 4px  
4px rgb(218, 190, 197); -webkit-box-  
shadow:4px 4px 4px 4px rgb(218, 190, 197);  
box-shadow:4px 4px 4px 4px rgb(218, 190,  
197) }
```


Background

The CSS property to change the background color of an element to Yxy 55.7636, 0.3304, 0.3210 is called "background". The background property can be set on classes, ids or directly on the HTML element.

```
.background, #background, body{  
background: rgb(218, 190, 197) }
```

If only the background color should be changed can be used:

```
.background{ background-color: rgb(218,  
190, 197) }
```

This example shows the color as background, it is applied via the CSS property "background".

To optimize and compress your CSS code, you can use our [online CSS compressor and optimizer](#) based on csstidy. If you want to create a linear or radial gradient as background or border, check our [CSS Gradient Generator](#).

Hey! You found this booklet interesting? Support Converting Colors with the new Membership Option!

The pro membership hides all ads, plus gives you double the colors in the color bucket, and more awesome pro features!

[Learn more, Memberships starting at \\$2.50/m!](#)

**Follow me
on Twitter!**

@ConvertingColor