

Converting Colors

$Y_{xy}(55.7540, 0.3337, 0.3191)$

Have a look what the booklet for
Yxy(55.7540, 0.3337, 0.3191)
contains.

Yxy(55.9560, 0.3339, 0.3199)	3
Conversions	4
Details	6
Harmonies	12
Previews	24
Color Blindness Simulation	27
CSS Examples	30

Color

Yxy(55.9560, 0.3339, 0.3199)

Conversions

Conversions Part 1

Format	Color
Hex	DEBDC5
RGB	222, 189, 197
RGB Percent	87%, 74%, 77%
CMY	0.1293, 0.2588, 0.2274
CMYK	0.00, 0.15, 0.11, 0.13
HSL	345°, 33%, 81%
HSV	345°, 15%, 87%
XYZ	58.4048, 55.9560, 60.5563
YIQ	199.7790, 17.1000, 9.4840

Conversions

Conversions Part 2

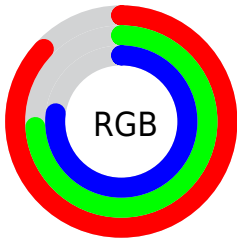
Format	Color
R _Y B	222, 189, 197
Decimal	14597573
CIE Lab	79.59, 13.06, 0.33
CIE LCh	80, 13.066, 1.467
Yxy	55.9560, 0.3339, 0.3199
Android (android.graphics.Color)	4292787653 (0xFFDEBDC5)
YUV	199.7790, -1.3700, 19.4878
Hunter-Lab	74.8037, 8.4617, 4.3652

Details

The Yxy color **55.9560, 0.3339, 0.3199** is a light color, and the websafe version is hex **FFCCCC**. A complement of this color would be **67.9242, 0.2951, 0.3383**, and the grayscale version is **57.6193, 0.3127, 0.3290**.

A 20% lighter version of the original color is **93.7206, 0.3138, 0.3204**, and **27.8070, 0.3402, 0.3185** is the 20% darker color. If you saturate the color by 10%, you get **46.3989, 0.3523, 0.3134**, and if you desaturate by 10%, it is **67.0660, 0.3189, 0.3261**.

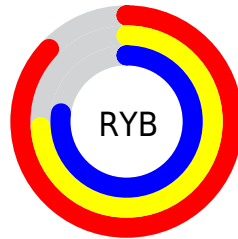
Distribution



Red (87%)

Green (74%)

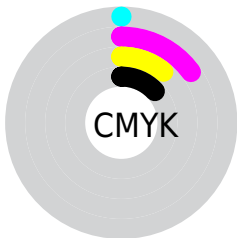
Blue (77%)



Red (87%)

Yellow (74%)

Blue (77%)

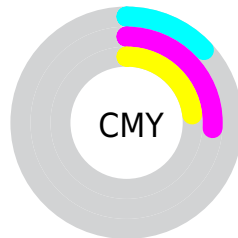


Cyan (0%)

Magenta (15%)

Yellow (11%)

Black (13%)



Cyan (13%)


Magenta (26%)


Yellow (23%)

Brightness & Saturation Gradients


These gradients show how the Yxy color 55.9560, 0.3339, 0.3199 changes by changing the brightness by 10 percent. The first figure shows a shift by +10% for each color and the second figure -10%.


Similar to the brightness gradients but the following saturation gradients show a change of the Yxy color 55.9560, 0.3339, 0.3199 by changing the saturation by 10% instead.


 55.9560, 0.3339,
0.3199

 55.9560, 0.3339,
0.3199


409.5257, 0.3236,
0.3243

 40.1676, 0.3364,
0.3188


 98.9402, 0.3302,
0.3215

 27.6693, 0.3395,
0.3175


126.9049, 0.3288,
0.3221

 18.0765, 0.3436,
0.3157


159.6972, 0.3276,
0.3226

 11.0049, 0.3492,
0.3133

197.7014, 0.3266,
0.3230

 6.0702, 0.3572,
0.3098

241.3019, 0.3257,
0.3234

 2.8878, 0.3696,
0.3044

290.8832, 0.3249,

 1.0734, 0.3918,

0.3238

0.2946

346.8297, 0.3242,
0.3241

0.0000, 1.0000,
0.0000

0.0000, 0.0000,
0.0000

55.9560, 0.3339,
0.3199

55.9560, 0.3339,
0.3199

46.3989, 0.3523,
0.3134

67.0660, 0.3189,
0.3261

38.3181, 0.3749,
0.3067

79.7862, 0.3068,
0.3319

31.6418, 0.4023,
0.3004

93.7949, 0.2970,
0.3366

26.2892, 0.4346,
0.2951

94.2721, 0.2929,
0.3289

■ 22.1712, 0.4714,
0.2917

■ 19.1876, 0.5108,
0.2913

■ 17.2225, 0.5496,
0.2947

■ 16.1343, 0.5833,
0.3022

■ 15.7978, 0.5979,
0.3068

Harmonies

Analogous

The Analogous color harmony consists of three colors that are next to each other on the color wheel.



55.9560, 0.3176, 0.3077



55.9560, 0.3339, 0.3199



55.9560, 0.3445, 0.3346

Triad

The Triadic color harmony groups three colors that are evenly spaced from another and form a triangle on the color wheel.



55.9560, 0.3339, 0.3199



55.9560, 0.3244, 0.3589



55.9560, 0.2802, 0.3086

Complementary

The Complementary color scheme is a pair of colors which are on the opposite of each other on the color wheel.



55.9560, 0.3339, 0.3199



67.9242, 0.2951, 0.3383

Split Complementary

Split-complementary colors differ from the complementary color scheme. The scheme consists of three colors, the original color and two neighbors of the complement color.



55.9560, 0.2819, 0.3221



55.9560, 0.3339, 0.3199



55.9560, 0.3072, 0.3517

Square

The Square scheme is like the rectangle color scheme, but the four colors are evenly spaced on the color wheel.



55.9560, 0.3339, 0.3199



55.9560, 0.3389, 0.3574



55.9560, 0.2917, 0.3380



55.9560, 0.2868, 0.3011

Rectangle

The Rectangle color scheme consists of four colors that form a rectangle on the color wheel.



55.9560, 0.3339, 0.3199



55.9560, 0.3468, 0.3441



55.9560, 0.2917, 0.3380



55.9560, 0.2798, 0.3126

Sweetspot

The Sweet Spot groups the original color and five complimentary colors.



55.9585, 0.3339, 0.3199



93.1764, 0.3178, 0.3266



55.9293, 0.3079, 0.2916



19.6776, 0.3188, 0.3262



0.0000, 0.0000, 0.0000



21.4041, 0.3127, 0.3290

Same Dimension

The Same Dimension uses a secret algorithm to generate beautiful new colors.



55.9585, 0.3339, 0.3199



72.0906, 0.3395, 0.3178



59.2534, 0.3390, 0.3385



13.7549, 0.3254, 0.3233



9.3968, 0.5944, 0.3048



0.6654, 0.5506, 0.2807

Inverse Universe

The Inverse Universe completely reimagines the original color for something new.



55.9585, 0.3339, 0.3199



72.0906, 0.3395, 0.3178



64.0657, 0.2899, 0.3193



13.7549, 0.3254, 0.3233



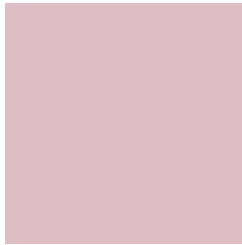
9.3968, 0.5944, 0.3048



0.6654, 0.5506, 0.2807

Previews

White Background



This preview shows how the Yxy color 55.9560, 0.3339, 0.3199 looks on a white background.

Color Contrast Check

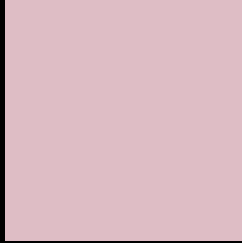
Large Text (above 18pt) WCAG AA × Fail

Any Text WCAG AA × Fail

Large Text (above 18pt) WCAG AAA × Fail

Any Text WCAG AAA × Fail

Black Background



This preview shows how the Yxy color 55.9560, 0.3339, 0.3199 looks on a black background.

Color Contrast Check

Large Text (above 18pt) WCAG AA ✓ Pass

Any Text WCAG AA ✓ Pass

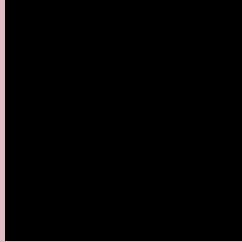
Large Text (above 18pt) WCAG AAA ✓ Pass

Any Text WCAG AAA ✓ Pass

If you want to check with other color combinations, try the [Color Contrast Checker](#).

Yxy 55.9560, 0.3339, 0.3199

Background



This preview shows how black text looks on a background with the Yxy color 55.9560, 0.3339, 0.3199.



This preview shows how white text looks on a background with the Yxy color 55.9560, 0.3339, 0.3199.

Color Blindness Simulation

Color vision deficiency is a very complex topic, and I could not describe the different causes any better than Wikipedia does, so if you want to learn more, you should check out their [article about color blindness](#).

Dichromacy



Original Color

55.9560, 0.3339, 0.3199

Protanopia

55.9763, 0.3122, 0.3230

Deuteranopia

56.0445, 0.3295, 0.3221



Tritanopia

55.9662, 0.3301, 0.3121

Trichromacy



Original Color

55.9560, 0.3339, 0.3199

Protanomaly

55.7200, 0.3196, 0.3208

Deuteranomaly

55.9182, 0.3313, 0.3210

Tritanomaly

55.8715, 0.3317, 0.3143

Monochromacy



Original Color

55.9560, 0.3339, 0.3199

Achromatopsia

57.7580, 0.3127, 0.3290

Achromatomaly

57.0133, 0.3201, 0.3255

CSS Examples

Text

The CSS property to change the color of the text to Yxy 55.9560, 0.3339, 0.3199 is called "color". The color property can be set on classes, ids or directly on the HTML element.

This example shows how text in the color `rgb(222, 189, 197)` looks like.

```
.text, #text, p{  
    color:rgb(222, 189, 197)  
}
```

If you want to add a text shadow in that color use the text-shadow property, you can generate a text shadow directly with our [CSS Text Shadow Generator](#).

Here you see how black text with a 4 pixel rgb(222, 189, 197) colored shadow looks like.

```
.shadow{ text-shadow: 4px 4px 2px rgb(222, 189, 197) }
```

Border

The CSS property to change the border of an element to Yxy 55.9560, 0.3339, 0.3199 is called "border". The border property can be set on classes, ids or directly on the HTML element.

This example shows the color as border, it can be applied via the CSS property "border" or "border-color".

```
.border, #border, table{ border:4px solid rgb(222, 189, 197) }
```

If only the border color should be changed use the property `border-color`.

```
.border{ border-color:rgb(222, 189, 197) }
```

If you want to add a box shadow in that color use:

Here you see how a box with a 4 pixel `rgb(222, 189, 197)` colored shadow looks like.

```
.boxshadow{ -moz-box-shadow:4px 4px 4px  
4px rgb(222, 189, 197); -webkit-box-  
shadow:4px 4px 4px 4px rgb(222, 189, 197);  
box-shadow:4px 4px 4px 4px rgb(222, 189,  
197) }
```


Background

The CSS property to change the background color of an element to Yxy 55.9560, 0.3339, 0.3199 is called "background". The background property can be set on classes, ids or directly on the HTML element.

```
.background, #background, body{  
background: rgb(222, 189, 197) }
```

If only the background color should be changed can be used:

```
.background{ background-color: rgb(222,  
189, 197) }
```

This example shows the color as background, it is applied via the CSS property "background".

To optimize and compress your CSS code, you can use our [online CSS compressor and optimizer](#) based on csstidy. If you want to create a linear or radial gradient as background or border, check our [CSS Gradient Generator](#).

Hey! You found this booklet interesting? Support Converting Colors with the new Membership Option!

The pro membership hides all ads, plus gives you double the colors in the color bucket, and more awesome pro features!

[Learn more, Memberships starting at \\$2.50/m!](#)

**Follow me
on Twitter!**

@ConvertingColor