

Converting Colors

$Yxy(55.7585, 0.3419, 0.3329)$

Have a look what the booklet for
Yxy(55.7585, 0.3419, 0.3329)
contains.

Yxy(55.9017, 0.3426, 0.3337)	3
<i>Conversions</i>	4
<i>Details</i>	6
<i>Harmonies</i>	12
<i>Previews</i>	24
<i>Color Blindness Simulation</i>	27
<i>CSS Examples</i>	30

Color

Yxy(55.9017, 0.3426, 0.3337)

Conversions

Conversions Part 1

Format	Color
Hex	DEBEBA
RGB	222, 190, 186
RGB Percent	87%, 75%, 73%
CMY	0.1296, 0.2548, 0.2705
CMYK	0.00, 0.14, 0.16, 0.13
HSL	7°, 35%, 80%
HSV	7°, 16%, 87%
XYZ	57.3926, 55.9017, 54.2265
YIQ	199.1120, 20.3560, 5.5400

Conversions

Conversions Part 2

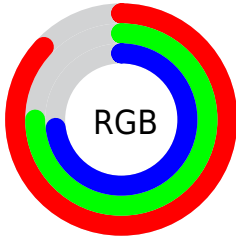
Format	Color
R _Y B	222, 191, 186
Decimal	14597818
CIE Lab	79.56, 10.73, 6.22
CIE LCh	80, 12.401, 30.127
Yxy	55.9017, 0.3426, 0.3337
Android (android.graphics.Color)	4292787898 (0xFFDEBEBA)
YUV	199.1120, -6.4642, 20.0728
Hunter-Lab	74.7674, 6.1763, 9.3360

Details

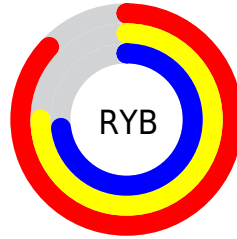
The Yxy color **55.9017, 0.3426, 0.3337** is a light color, and the websafe version is hex **FFCCCC**. A complement of this color would be **65.8328, 0.2881, 0.3243**, and the grayscale version is **57.2160, 0.3127, 0.3290**.

A 20% lighter version of the original color is **93.5823, 0.3209, 0.3329**, and **27.8003, 0.3511, 0.3352** is the 20% darker color. If you saturate the color by 10%, you get **47.0575, 0.3667, 0.3368**, and if you desaturate by 10%, it is **66.0537, 0.3230, 0.3307**.

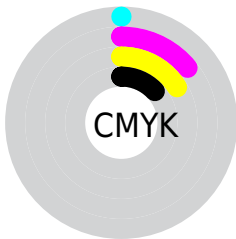
Distribution



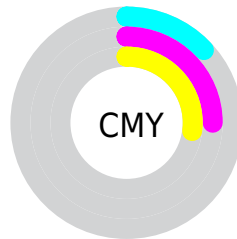
- Red (87%)
- Green (75%)
- Blue (73%)



- Red (87%)
- Yellow (75%)
- Blue (73%)



- Cyan (0%)
- Magenta (14%)
- Yellow (16%)
- Black (13%)





- Cyan (13%)
- Magenta (25%)
- Yellow (27%)

Brightness & Saturation Gradients


These gradients show how the Yxy color 55.9017, 0.3426, 0.3337 changes by changing the brightness by 10 percent. The first figure shows a shift by +10% for each color and the second figure -10%.


Similar to the brightness gradients but the following saturation gradients show a change of the Yxy color 55.9017, 0.3426, 0.3337 by changing the saturation by 10% instead.


 55.9017, 0.3426,
0.3337

 55.9017, 0.3426,
0.3337


409.3209, 0.3280,
0.3316

 40.1241, 0.3461,
0.3342


 98.8608, 0.3374,
0.3330

 27.6353, 0.3506,
0.3347


126.8112, 0.3354,
0.3327

 18.0509, 0.3565,
0.3354


159.5879, 0.3337,
0.3325

 10.9866, 0.3645,
0.3362

197.5754, 0.3323,
0.3322

 6.0578, 0.3760,
0.3373

241.1580, 0.3310,
0.3321

 2.8803, 0.3941,
0.3385

290.7203, 0.3299,

 1.0695, 0.4292,

0.3319

0.3417

346.6464, 0.3289,
0.3317

0.0000, 1.0000,
0.0000

0.0000, 0.0000,
0.0000

55.9017, 0.3426,
0.3337

55.9017, 0.3426,
0.3337

47.0575, 0.3667,
0.3368

66.0537, 0.3230,
0.3307

39.4609, 0.3960,
0.3400

77.5559, 0.3070,
0.3280

33.0577, 0.4312,
0.3429

90.4579, 0.2940,
0.3255

27.7871, 0.4718,
0.3452

94.2634, 0.2929,
0.3289

■ 23.5831, 0.5163,
0.3463

■ 20.3723, 0.5605,
0.3455

■ 18.0725, 0.5987,
0.3426

■ 16.5876, 0.6249,
0.3379

■ 16.2072, 0.6320,
0.3364

Harmonies

Analogous

The Analogous color harmony consists of three colors that are next to each other on the color wheel.



55.9017, 0.3322, 0.3198



55.9017, 0.3426, 0.3337



55.9017, 0.3447, 0.3468

Triad

The Triadic color harmony groups three colors that are evenly spaced from another and form a triangle on the color wheel.



55.9017, 0.3426, 0.3337



55.9017, 0.3082, 0.3510



55.9017, 0.2877, 0.3026

Complementary

The Complementary color scheme is a pair of colors which are on the opposite of each other on the color wheel.



55.9017, 0.3426, 0.3337



65.8328, 0.2881, 0.3243

Split Complementary

Split-complementary colors differ from the complementary color scheme. The scheme consists of three colors, the original color and two neighbors of the complement color.



55.9017, 0.2817, 0.3101



55.9017, 0.3426, 0.3337



55.9017, 0.2933, 0.3382

Square

The Square scheme is like the rectangle color scheme, but the four colors are evenly spaced on the color wheel.



55.9017, 0.3426, 0.3337



55.9017, 0.3246, 0.3574



55.9017, 0.2837, 0.3231



55.9017, 0.3004, 0.3021

Rectangle

The Rectangle color scheme consists of four colors that form a rectangle on the color wheel.



55.9017, 0.3426, 0.3337



55.9017, 0.3412, 0.3534



55.9017, 0.2837, 0.3231



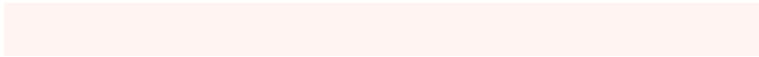
55.9017, 0.2849, 0.3044

Sweetspot

The Sweet Spot groups the original color and five complimentary colors.



55.9042, 0.3426, 0.3337



92.1891, 0.3210, 0.3304



55.7282, 0.3173, 0.2929



19.5054, 0.3222, 0.3306



0.0000, 0.0000, 0.0000



21.4041, 0.3127, 0.3290

Same Dimension

The Same Dimension uses a secret algorithm to generate beautiful new colors.



55.9042, 0.3426, 0.3337



72.8039, 0.3492, 0.3346



63.9775, 0.3394, 0.3535



13.9451, 0.3289, 0.3317



9.7107, 0.6305, 0.3376



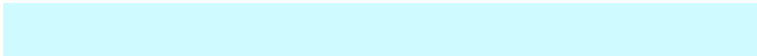
0.7566, 0.6089, 0.3547

Inverse Universe

The Inverse Universe completely reimagines the original color for something new.



65.8328, 0.2881, 0.3243



88.5449, 0.2838, 0.3233



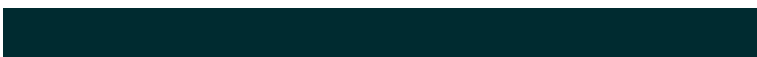
57.2034, 0.2872, 0.3032



15.2978, 0.2982, 0.3263



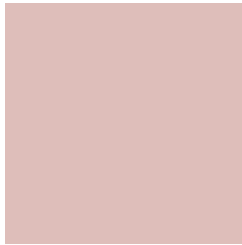
27.0263, 0.2149, 0.2937



1.9487, 0.2166, 0.2996

Previews

White Background



This preview shows how the Yxy color 55.9017, 0.3426, 0.3337 looks on a white background.

Color Contrast Check

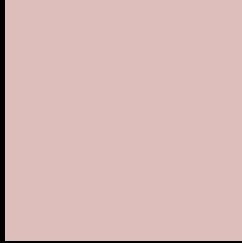
Large Text (above 18pt) WCAG AA × Fail

Any Text WCAG AA × Fail

Large Text (above 18pt) WCAG AAA × Fail

Any Text WCAG AAA × Fail

Black Background



This preview shows how the Yxy color 55.9017, 0.3426, 0.3337 looks on a black background.

Color Contrast Check

Large Text (above 18pt) WCAG AA ✓ Pass

Any Text WCAG AA ✓ Pass

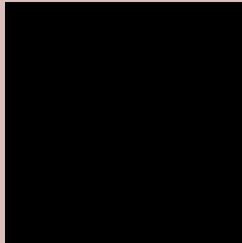
Large Text (above 18pt) WCAG AAA ✓ Pass

Any Text WCAG AAA ✓ Pass

If you want to check with other color combinations, try the [Color Contrast Checker](#).

Yxy 55.9017, 0.3426, 0.3337

Background



This preview shows how black text looks on a background with the Yxy color 55.9017, 0.3426, 0.3337.

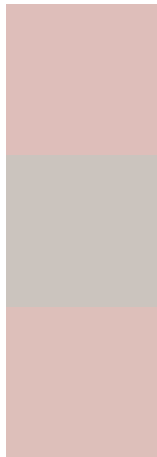


This preview shows how white text looks on a background with the Yxy color 55.9017, 0.3426, 0.3337.

Color Blindness Simulation

Color vision deficiency is a very complex topic, and I could not describe the different causes any better than Wikipedia does, so if you want to learn more, you should check out their [article about color blindness](#).

Dichromacy



Original Color

55.9017, 0.3426, 0.3337

Protanopia

55.8941, 0.3228, 0.3362

Deuteranopia

56.1789, 0.3416, 0.3349



Tritanopia

56.0780, 0.3317, 0.3132

Trichromacy



Original Color

55.9017, 0.3426, 0.3337

Protanomaly

55.9593, 0.3296, 0.3350

Deuteranomaly

56.1789, 0.3416, 0.3349

Tritanomaly

56.0687, 0.3355, 0.3211

Monochromacy



Original Color

55.9017, 0.3426, 0.3337

Achromatopsia

57.1125, 0.3127, 0.3290

Achromatomaly

56.6403, 0.3230, 0.3314

CSS Examples

Text

The CSS property to change the color of the text to Yxy 55.9017, 0.3426, 0.3337 is called "color". The color property can be set on classes, ids or directly on the HTML element.

This example shows how text in the color `rgb(222, 190, 186)` looks like.

```
.text, #text, p{  
    color:rgb(222, 190, 186)  
}
```

If you want to add a text shadow in that color use the text-shadow property, you can generate a text shadow directly with our [CSS Text Shadow Generator](#).

Here you see how black text with a 4 pixel rgb(222, 190, 186) colored shadow looks like.

```
.shadow{ text-shadow: 4px 4px 2px rgb(222, 190, 186) }
```

Border

The CSS property to change the border of an element to Yxy 55.9017, 0.3426, 0.3337 is called "border". The border property can be set on classes, ids or directly on the HTML element.

This example shows the color as border, it can be applied via the CSS property "border" or "border-color".

```
.border, #border, table{ border:4px solid rgb(222, 190, 186) }
```

If only the border color should be changed use the property `border-color`.

```
.border{ border-color:rgb(222, 190, 186) }
```

If you want to add a box shadow in that color use:

Here you see how a box with a 4 pixel `rgb(222, 190, 186)` colored shadow looks like.

```
.boxshadow{ -moz-box-shadow:4px 4px 4px 4px rgb(222, 190, 186); -webkit-box-shadow:4px 4px 4px 4px rgb(222, 190, 186); box-shadow:4px 4px 4px 4px rgb(222, 190, 186) }
```


Background

The CSS property to change the background color of an element to Yxy 55.9017, 0.3426, 0.3337 is called "background". The background property can be set on classes, ids or directly on the HTML element.

```
.background, #background, body{  
background: rgb(222, 190, 186) }
```

If only the background color should be changed can be used:

```
.background{ background-color: rgb(222,  
190, 186) }
```

This example shows the color as background, it is applied via the CSS property "background".

To optimize and compress your CSS code, you can use our [online CSS compressor and optimizer](#) based on csstidy. If you want to create a linear or radial gradient as background or border, check our [CSS Gradient Generator](#).

Hey! You found this booklet interesting? Support Converting Colors with the new Membership Option!

The pro membership hides all ads, plus gives you double the colors in the color bucket, and more awesome pro features!

[Learn more, Memberships starting at \\$2.50/m!](#)

**Follow me
on Twitter!**

@ConvertingColor