

Converting Colors

Yxy(55.8044, 0.3287, 0.3219)

Have a look what the booklet for
Yxy(55.8044, 0.3287, 0.3219)
contains.

Yxy(55.8918, 0.3286, 0.3221)	3
<i>Conversions</i>	4
<i>Details</i>	6
<i>Harmonies</i>	12
<i>Previews</i>	24
<i>Color Blindness Simulation</i>	27
<i>CSS Examples</i>	30

Color

Yxy(55.8918, 0.3286, 0.3221)

Conversions

Conversions Part 1

Format	Color
Hex	D8BFC5
RGB	216, 191, 197
RGB Percent	85%, 75%, 77%
CMY	0.1531, 0.2509, 0.2274
CMYK	0.00, 0.12, 0.09, 0.15
HSL	346°, 24%, 80%
HSV	346°, 12%, 85%
XYZ	57.0197, 55.8918, 60.6116
YIQ	199.1590, 12.9740, 7.1660

Conversions

Conversions Part 2

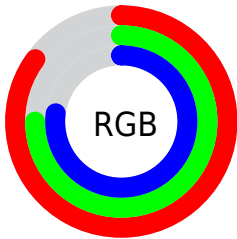
Format	Color
R _Y B	216, 191, 197
Decimal	14204869
CIE Lab	79.55, 9.83, 0.22
CIE LCh	80, 9.835, 1.290
Yxy	55.8918, 0.3286, 0.3221
Android (android.graphics.Color)	4292394949 (0xFFD8BFC5)
YUV	199.1590, -1.0644, 14.7696
Hunter-Lab	74.7608, 5.3096, 4.2638

Details

The Yxy color **55.8918, 0.3286, 0.3221** is a light color, and the websafe version is hex **CCCCCC**. A complement of this color would be **64.8218, 0.2989, 0.3360**, and the grayscale version is **57.2156, 0.3127, 0.3290**.

A 20% lighter version of the original color is **94.9373, 0.3137, 0.3223**, and **27.7372, 0.3330, 0.3214** is the 20% darker color. If you saturate the color by 10%, you get **46.4462, 0.3458, 0.3157**, and if you desaturate by 10%, it is **66.8131, 0.3146, 0.3281**.

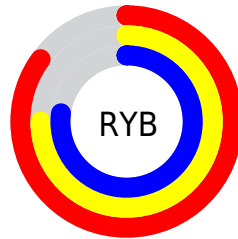
Distribution



Red (85%)

Green (75%)

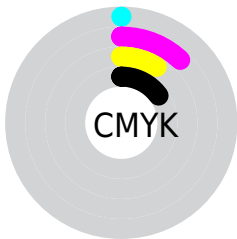
Blue (77%)



Red (85%)

Yellow (75%)

Blue (77%)

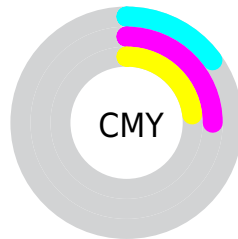


Cyan (0%)

Magenta (12%)

Yellow (9%)

Black (15%)



Cyan (15%)


Magenta (25%)


Yellow (23%)

Brightness & Saturation Gradients


These gradients show how the Yxy color 55.8918, 0.3286, 0.3221 changes by changing the brightness by 10 percent. The first figure shows a shift by +10% for each color and the second figure -10%.


Similar to the brightness gradients but the following saturation gradients show a change of the Yxy color 55.8918, 0.3286, 0.3221 by changing the saturation by 10% instead.

 55.8918, 0.3286,
0.3221

 55.8918, 0.3286,
0.3221


409.2836, 0.3209,
0.3255

 40.1162, 0.3305,
0.3213


 98.8464, 0.3258,
0.3233

 27.6291, 0.3328,
0.3203


126.7941, 0.3248,
0.3238

 18.0463, 0.3359,
0.3189


159.5680, 0.3239,
0.3241

 10.9832, 0.3401,
0.3171

197.5524, 0.3231,
0.3245

 6.0556, 0.3461,
0.3144

241.1318, 0.3225,
0.3248

 2.8789, 0.3554,
0.3103

290.6905, 0.3219,

 1.0688, 0.3721,

0.3250

0.3029

346.6130, 0.3214,
0.3253

0.0000, 1.0000,
0.0000

0.0000, 0.0000,
0.0000

55.8918, 0.3286,
0.3221

55.8918, 0.3286,
0.3221

46.4462, 0.3458,
0.3157

66.8131, 0.3146,
0.3281

38.4057, 0.3670,
0.3092

79.2619, 0.3033,
0.3337

31.7049, 0.3928,
0.3028

92.7811, 0.2941,
0.3379

26.2707, 0.4235,
0.2971

93.3329, 0.2894,
0.3289

■ 22.0224, 0.4590,
0.2930

■ 18.8703, 0.4979,
0.2915

■ 16.7117, 0.5373,
0.2936

■ 15.4240, 0.5733,
0.2997

■ 14.8398, 0.5984,
0.3070

Harmonies

Analogous

The Analogous color harmony consists of three colors that are next to each other on the color wheel.



55.8918, 0.3164, 0.3128



55.8918, 0.3286, 0.3221



55.8918, 0.3366, 0.3333

Triad

The Triadic color harmony groups three colors that are evenly spaced from another and form a triangle on the color wheel.



55.8918, 0.3286, 0.3221



55.8918, 0.3217, 0.3514



55.8918, 0.2881, 0.3138

Complementary

The Complementary color scheme is a pair of colors which are on the opposite of each other on the color wheel.



55.8918, 0.3286, 0.3221



64.8218, 0.2989, 0.3360

Split Complementary

Split-complementary colors differ from the complementary color scheme. The scheme consists of three colors, the original color and two neighbors of the complement color.



55.8918, 0.2895, 0.3240



55.8918, 0.3286, 0.3221



55.8918, 0.3087, 0.3460

Square

The Square scheme is like the rectangle color scheme, but the four colors are evenly spaced on the color wheel.



55.8918, 0.3286, 0.3221



55.8918, 0.3325, 0.3504



55.8918, 0.2969, 0.3359



55.8918, 0.2931, 0.3079

Rectangle

The Rectangle color scheme consists of four colors that form a rectangle on the color wheel.



55.8918, 0.3286, 0.3221



55.8918, 0.3383, 0.3404



55.8918, 0.2969, 0.3359



55.8918, 0.2878, 0.3168

Sweetspot

The Sweet Spot groups the original color and five complimentary colors.



55.8943, 0.3286, 0.3221



94.8471, 0.3165, 0.3272



55.8868, 0.3091, 0.3003



20.0138, 0.3176, 0.3268



0.0000, 0.0000, 0.0000



21.4041, 0.3127, 0.3290

Same Dimension

The Same Dimension uses a secret algorithm to generate beautiful new colors.



55.8943, 0.3286, 0.3221



77.6743, 0.3327, 0.3205



58.4033, 0.3325, 0.3363



12.4692, 0.3254, 0.3234



8.8015, 0.5947, 0.3050



0.5440, 0.5450, 0.2776

Inverse Universe

The Inverse Universe completely reimagines the original color for something new.



55.8943, 0.3286, 0.3221



77.6743, 0.3327, 0.3205



61.9921, 0.2950, 0.3216



12.4692, 0.3254, 0.3234



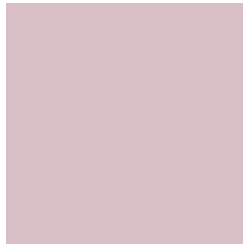
8.8015, 0.5947, 0.3050



0.5440, 0.5450, 0.2776

Previews

White Background



This preview shows how the Yxy color 55.8918, 0.3286, 0.3221 looks on a white background.

Color Contrast Check

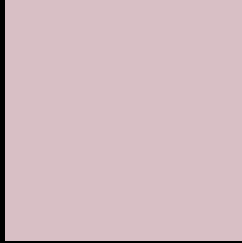
Large Text (above 18pt) WCAG AA × Fail

Any Text WCAG AA × Fail

Large Text (above 18pt) WCAG AAA × Fail

Any Text WCAG AAA × Fail

Black Background



This preview shows how the Yxy color 55.8918, 0.3286, 0.3221 looks on a black background.

Color Contrast Check

Large Text (above 18pt) WCAG AA ✓ Pass

Any Text WCAG AA ✓ Pass

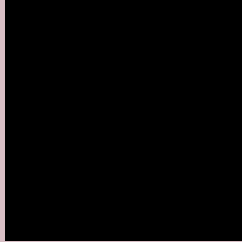
Large Text (above 18pt) WCAG AAA ✓ Pass

Any Text WCAG AAA ✓ Pass

If you want to check with other color combinations, try the [Color Contrast Checker](#).

Yxy 55.8918, 0.3286, 0.3221

Background



This preview shows how black text looks on a background with the Yxy color 55.8918, 0.3286, 0.3221.



This preview shows how white text looks on a background with the Yxy color 55.8918, 0.3286, 0.3221.

Color Blindness Simulation

Color vision deficiency is a very complex topic, and I could not describe the different causes any better than Wikipedia does, so if you want to learn more, you should check out their [article about color blindness](#).

Dichromacy



Original Color

55.8918, 0.3286, 0.3221

Protanopia

55.9293, 0.3129, 0.3242

Deuteranopia

55.8918, 0.3286, 0.3221



Tritanopia

55.9864, 0.3233, 0.3118

Trichromacy



Original Color

55.8918, 0.3286, 0.3221

Protanomaly

55.8289, 0.3186, 0.3231

Deuteranomaly

55.8918, 0.3286, 0.3221

Tritanomaly

55.8429, 0.3257, 0.3152

Monochromacy



Original Color

55.8918, 0.3286, 0.3221

Achromatopsia

57.1125, 0.3127, 0.3290

Achromatomaly

56.5362, 0.3184, 0.3266

CSS Examples

Text

The CSS property to change the color of the text to Yxy 55.8918, 0.3286, 0.3221 is called "color". The color property can be set on classes, ids or directly on the HTML element.

This example shows how text in the color `rgb(216, 191, 197)` looks like.

```
.text, #text, p{  
    color:rgb(216, 191, 197)  
}
```

If you want to add a text shadow in that color use the text-shadow property, you can generate a text shadow directly with our [CSS Text Shadow Generator](#).

Here you see how black text with a 4 pixel rgb(216, 191, 197) colored shadow looks like.

```
.shadow{ text-shadow: 4px 4px 2px rgb(216, 191, 197) }
```

Border

The CSS property to change the border of an element to Yxy 55.8918, 0.3286, 0.3221 is called "border". The border property can be set on classes, ids or directly on the HTML element.

This example shows the color as border, it can be applied via the CSS property "border" or "border-color".

```
.border, #border, table{ border:4px solid rgb(216, 191, 197) }
```

If only the border color should be changed use the property `border-color`.

```
.border{ border-color:rgb(216, 191, 197) }
```

If you want to add a box shadow in that color use:

Here you see how a box with a 4 pixel `rgb(216, 191, 197)` colored shadow looks like.

```
.boxshadow{ -moz-box-shadow:4px 4px 4px  
4px rgb(216, 191, 197); -webkit-box-  
shadow:4px 4px 4px 4px rgb(216, 191, 197);  
box-shadow:4px 4px 4px 4px rgb(216, 191,  
197) }
```


Background

The CSS property to change the background color of an element to Yxy 55.8918, 0.3286, 0.3221 is called "background". The background property can be set on classes, ids or directly on the HTML element.

```
.background, #background, body{  
background: rgb(216, 191, 197) }
```

If only the background color should be changed can be used:

```
.background{ background-color: rgb(216,  
191, 197) }
```

This example shows the color as background, it is applied via the CSS property "background".

To optimize and compress your CSS code, you can use our [online CSS compressor and optimizer](#) based on csstidy. If you want to create a linear or radial gradient as background or border, check our [CSS Gradient Generator](#).

Hey! You found this booklet interesting? Support Converting Colors with the new Membership Option!

The pro membership hides all ads, plus gives you double the colors in the color bucket, and more awesome pro features!

[Learn more, Memberships starting at \\$2.50/m!](#)

**Follow me
on Twitter!**

@ConvertingColor