

Converting Colors

$Yxy(55.8321, 0.3390, 0.3222)$

Have a look what the booklet for
Yxy(55.8321, 0.3390, 0.3222)
contains.

Yxy(55.8690, 0.3390, 0.3223)	3
<i>Conversions</i>	4
<i>Details</i>	6
<i>Harmonies</i>	12
<i>Previews</i>	24
<i>Color Blindness Simulation</i>	27
<i>CSS Examples</i>	30

Color

Yxy(55.8690, 0.3390, 0.3223)

Conversions

Conversions Part 1

Format	Color
Hex	E1BCC2
RGB	225, 188, 194
RGB Percent	88%, 74%, 76%
CMY	0.1177, 0.2627, 0.2393
CMYK	0.00, 0.16, 0.14, 0.12
HSL	350°, 38%, 81%
HSV	350°, 16%, 88%
XYZ	58.7639, 55.8690, 58.7119
YIQ	199.7470, 20.1260, 9.7100

Conversions

Conversions Part 2

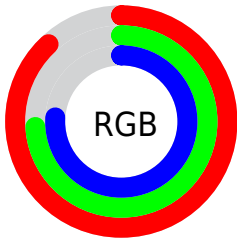
Format	Color
R _Y B	225, 188, 194
Decimal	14793922
CIE Lab	79.54, 14.15, 1.94
CIE LCh	80, 14.277, 7.794
Yxy	55.8690, 0.3390, 0.3223
Android (android.graphics.Color)	4292984002 (0xFFE1BCC2)
YUV	199.7470, -2.8333, 22.1469
Hunter-Lab	74.7456, 9.5293, 5.7502

Details

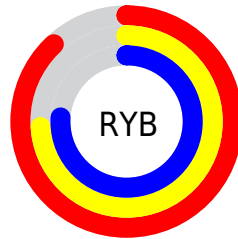
The Yxy color **55.8690, 0.3390, 0.3223** is a light color, and the websafe version is hex **FFCCCC**. A complement of this color would be **69.6452, 0.2915, 0.3358**, and the grayscale version is **57.6029, 0.3127, 0.3290**.

A 20% lighter version of the original color is **92.8635, 0.3162, 0.3232**, and **27.6564, 0.3461, 0.3216** is the 20% darker color. If you saturate the color by 10%, you get **46.2012, 0.3602, 0.3179**, and if you desaturate by 10%, it is **67.1477, 0.3219, 0.3265**.

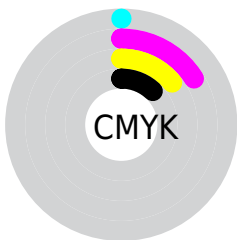
Distribution



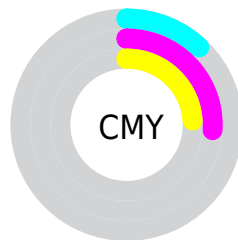
- Red (88%)
- Green (74%)
- Blue (76%)



- Red (88%)
- Yellow (74%)
- Blue (76%)



- Cyan (0%)
- Magenta (16%)
- Yellow (14%)
- Black (12%)



- Cyan (12%)
- Magenta (26%)
- Yellow (24%)

Brightness & Saturation Gradients

These gradients show how the Yxy color 55.8690, 0.3390, 0.3223 changes by changing the brightness by 10 percent. The first figure shows a shift by +10% for each color and the second figure -10%.


Similar to the brightness gradients but the following saturation gradients show a change of the Yxy color 55.8690, 0.3390, 0.3223 by changing the saturation by 10% instead.


 55.8690, 0.3390,
0.3223

 55.8690, 0.3390,
0.3223


409.1976, 0.3262,
0.3256

 40.0979, 0.3421,
0.3215


 98.8130, 0.3344,
0.3235

 27.6149, 0.3460,
0.3204


126.7547, 0.3327,
0.3240

 18.0356, 0.3511,
0.3190


159.5221, 0.3312,
0.3243

 10.9755, 0.3581,
0.3171

197.4995, 0.3299,
0.3247

 6.0504, 0.3681,
0.3143

241.0714, 0.3288,
0.3250

 2.8757, 0.3838,
0.3098

290.6221, 0.3279,

 1.0672, 0.4118,

0.3252

0.3014

346.5360, 0.3270,
0.3254

0.0000, 1.0000,
0.0000

0.0000, 0.0000,
0.0000

55.8690, 0.3390,
0.3223

55.8690, 0.3390,
0.3223

46.2012, 0.3602,
0.3179

67.1477, 0.3219,
0.3265

38.0637, 0.3863,
0.3136

80.0985, 0.3081,
0.3304

31.3799, 0.4179,
0.3095

94.4623, 0.2970,
0.3334

26.0640, 0.4551,
0.3064

94.7434, 0.2946,
0.3289

■ 22.0209, 0.4968,
0.3049

■ 19.1432, 0.5399,
0.3059

■ 17.3059, 0.5797,
0.3098

■ 16.3525, 0.6106,
0.3163

■ 16.1325, 0.6193,
0.3185

Harmonies

Analogous

The Analogous color harmony consists of three colors that are next to each other on the color wheel.



55.8690, 0.3221, 0.3082



55.8690, 0.3390, 0.3223



55.8690, 0.3488, 0.3384

Triad

The Triadic color harmony groups three colors that are evenly spaced from another and form a triangle on the color wheel.



55.8690, 0.3390, 0.3223



55.8690, 0.3216, 0.3608



55.8690, 0.2780, 0.3043

Complementary

The Complementary color scheme is a pair of colors which are on the opposite of each other on the color wheel.



55.8690, 0.3390, 0.3223



69.6452, 0.2915, 0.3358

Split Complementary

Split-complementary colors differ from the complementary color scheme. The scheme consists of three colors, the original color and two neighbors of the complement color.



55.8690, 0.2779, 0.3178



55.8690, 0.3390, 0.3223



55.8690, 0.3027, 0.3512

Square

The Square scheme is like the rectangle color scheme, but the four colors are evenly spaced on the color wheel.



55.8690, 0.3390, 0.3223



55.8690, 0.3385, 0.3612



55.8690, 0.2869, 0.3352



55.8690, 0.2871, 0.2978

Rectangle

The Rectangle color scheme consists of four colors that form a rectangle on the color wheel.



55.8690, 0.3390, 0.3223



55.8690, 0.3498, 0.3484



55.8690, 0.2869, 0.3352



55.8690, 0.2770, 0.3082

Sweetspot

The Sweet Spot groups the original color and five complimentary colors.



55.8715, 0.3390, 0.3223



91.4635, 0.3198, 0.3270



56.4402, 0.3097, 0.2878



19.3299, 0.3209, 0.3267



0.0000, 0.0000, 0.0000



21.4041, 0.3127, 0.3290

Same Dimension

The Same Dimension uses a secret algorithm to generate beautiful new colors.



55.8715, 0.3390, 0.3223



69.2106, 0.3463, 0.3207



61.0996, 0.3416, 0.3430



13.7364, 0.3267, 0.3252



9.3099, 0.6163, 0.3169



0.6565, 0.5772, 0.2953

Inverse Universe

The Inverse Universe completely reimagines the original color for something new.



55.8715, 0.3390, 0.3223



69.2106, 0.3463, 0.3207



63.5437, 0.2873, 0.3146



13.7364, 0.3267, 0.3252



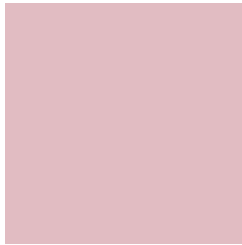
9.3099, 0.6163, 0.3169



0.6565, 0.5772, 0.2953

Previews

White Background



This preview shows how the Yxy color 55.8690, 0.3390, 0.3223 looks on a white background.

Color Contrast Check

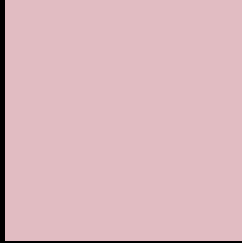
Large Text (above 18pt) WCAG AA × Fail

Any Text WCAG AA × Fail

Large Text (above 18pt) WCAG AAA × Fail

Any Text WCAG AAA × Fail

Black Background



This preview shows how the Yxy color 55.8690, 0.3390, 0.3223 looks on a black background.

Color Contrast Check

Large Text (above 18pt) WCAG AA ✓ Pass

Any Text WCAG AA ✓ Pass

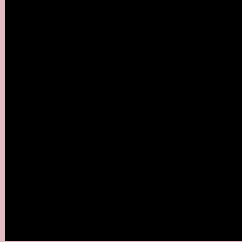
Large Text (above 18pt) WCAG AAA ✓ Pass

Any Text WCAG AAA ✓ Pass

If you want to check with other color combinations, try the [Color Contrast Checker](#).

Yxy 55.8690, 0.3390, 0.3223

Background



This preview shows how black text looks on a background with the Yxy color 55.8690, 0.3390, 0.3223.



This preview shows how white text looks on a background with the Yxy color 55.8690, 0.3390, 0.3223.

Color Blindness Simulation

Color vision deficiency is a very complex topic, and I could not describe the different causes any better than Wikipedia does, so if you want to learn more, you should check out their [article about color blindness](#).

Dichromacy



Original Color

55.8690, 0.3390, 0.3223

Protanopia

55.8827, 0.3137, 0.3254

Deuteranopia

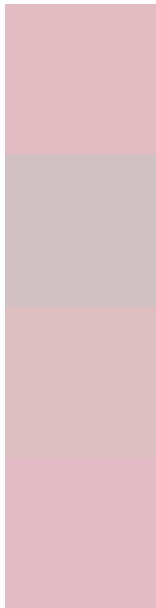
56.0173, 0.3335, 0.3267



Tritanopia

55.9264, 0.3343, 0.3133

Trichromacy



Original Color

55.8690, 0.3390, 0.3223

Protanomaly

55.7265, 0.3227, 0.3243

Deuteranomaly

56.0493, 0.3361, 0.3256

Tritanomaly

55.7866, 0.3367, 0.3166

Monochromacy



Original Color

55.8690, 0.3390, 0.3223

Achromatopsia

57.7580, 0.3127, 0.3290

Achromatomaly

57.1124, 0.3216, 0.3267

CSS Examples

Text

The CSS property to change the color of the text to Yxy 55.8690, 0.3390, 0.3223 is called "color". The color property can be set on classes, ids or directly on the HTML element.

This example shows how text in the color `rgb(225, 188, 194)` looks like.

```
.text, #text, p{  
    color:rgb(225, 188, 194)  
}
```

If you want to add a text shadow in that color use the text-shadow property, you can generate a text shadow directly with our [CSS Text Shadow Generator](#).

Here you see how black text with a 4 pixel rgb(225, 188, 194) colored shadow looks like.

```
.shadow{ text-shadow: 4px 4px 2px rgb(225, 188, 194) }
```

Border

The CSS property to change the border of an element to Yxy 55.8690, 0.3390, 0.3223 is called "border". The border property can be set on classes, ids or directly on the HTML element.

This example shows the color as border, it can be applied via the CSS property "border" or "border-color".

```
.border, #border, table{ border:4px solid rgb(225, 188, 194) }
```

If only the border color should be changed use the property `border-color`.

```
.border{ border-color:rgb(225, 188, 194) }
```

If you want to add a box shadow in that color use:

Here you see how a box with a 4 pixel `rgb(225, 188, 194)` colored shadow looks like.

```
.boxshadow{ -moz-box-shadow:4px 4px 4px  
4px rgb(225, 188, 194); -webkit-box-  
shadow:4px 4px 4px 4px rgb(225, 188, 194);  
box-shadow:4px 4px 4px 4px rgb(225, 188,  
194) }
```


Background

The CSS property to change the background color of an element to Yxy 55.8690, 0.3390, 0.3223 is called "background". The background property can be set on classes, ids or directly on the HTML element.

```
.background, #background, body{  
background: rgb(225, 188, 194) }
```

If only the background color should be changed can be used:

```
.background{ background-color: rgb(225,  
188, 194) }
```

This example shows the color as background, it is applied via the CSS property "background".

To optimize and compress your CSS code, you can use our [online CSS compressor and optimizer](#) based on csstidy. If you want to create a linear or radial gradient as background or border, check our [CSS Gradient Generator](#).

Hey! You found this booklet interesting? Support Converting Colors with the new Membership Option!

The pro membership hides all ads, plus gives you double the colors in the color bucket, and more awesome pro features!

[Learn more, Memberships starting at \\$2.50/m!](#)

**Follow me
on Twitter!**

@ConvertingColor