

Converting Colors

Yxy(55.9297, 0.3491, 0.3369)

Have a look what the booklet for
Yxy(55.9297, 0.3491, 0.3369)
contains.

Yxy(55.9413, 0.3495, 0.3371)	3
<i>Conversions</i>	4
<i>Details</i>	6
<i>Harmonies</i>	12
<i>Previews</i>	24
<i>Color Blindness Simulation</i>	27
<i>CSS Examples</i>	30

Color

Yxy(55.9413, 0.3495, 0.3371)

Conversions

Conversions Part 1

Format	Color
Hex	E2BDB6
RGB	226, 189, 182
RGB Percent	89%, 74%, 71%
CMY	0.1139, 0.2588, 0.2862
CMYK	0.00, 0.16, 0.19, 0.11
HSL	10°, 43%, 80%
HSV	10°, 19%, 89%
XYZ	57.9991, 55.9413, 52.0083
YIQ	199.2650, 24.2990, 5.6670

Conversions

Conversions Part 2

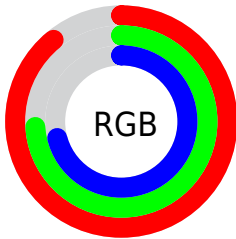
Format	Color
R _Y B	226, 190, 182
Decimal	14859702
CIE Lab	79.58, 12.11, 8.45
CIE LCh	80, 14.771, 34.918
Yxy	55.9413, 0.3495, 0.3371
Android (android.graphics.Color)	4293049782 (0xFFE2BDB6)
YUV	199.2650, -8.5116, 23.4466
Hunter-Lab	74.7939, 7.5288, 11.1282

Details

The Yxy color **55.9413, 0.3495, 0.3371** is a light color, and the websafe version is hex **FFCCCC**. A complement of this color would be **66.0863, 0.2832, 0.3207**, and the grayscale version is **57.3264, 0.3127, 0.3290**.

A 20% lighter version of the original color is **92.7379, 0.3235, 0.3358**, and **27.7393, 0.3593, 0.3397** is the 20% darker color. If you saturate the color by 10%, you get **47.4367, 0.3746, 0.3416**, and if you desaturate by 10%, it is **65.6727, 0.3288, 0.3328**.

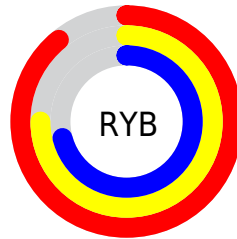
Distribution



Red (89%)

Green (74%)

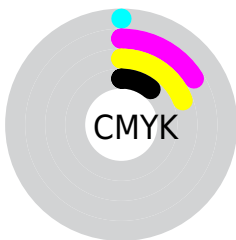
Blue (71%)



Red (89%)

Yellow (75%)

Blue (71%)

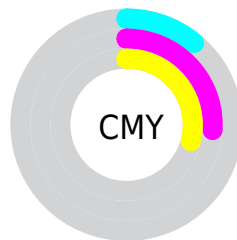


Cyan (0%)

Magenta (16%)

Yellow (19%)

Black (11%)



Cyan (11%)


Magenta (26%)

Yellow (29%)

Brightness & Saturation Gradients


These gradients show how the Yxy color 55.9413, 0.3495, 0.3371 changes by changing the brightness by 10 percent. The first figure shows a shift by +10% for each color and the second figure -10%.


Similar to the brightness gradients but the following saturation gradients show a change of the Yxy color 55.9413, 0.3495, 0.3371 by changing the saturation by 10% instead.


 55.9413, 0.3495,
0.3371

 55.9413, 0.3495,
0.3371

409.4702, 0.3315,
0.3334

 40.1559, 0.3539,
0.3379


 98.9187, 0.3431,
0.3358

 27.6601, 0.3594,
0.3389


126.8795, 0.3406,
0.3354

 18.0696, 0.3666,
0.3401


159.6676, 0.3385,
0.3349

 11.0000, 0.3765,
0.3416

197.6673, 0.3368,
0.3346

 6.0668, 0.3907,
0.3435

241.2630, 0.3352,
0.3342

 2.8857, 0.4129,
0.3458

290.8391, 0.3338,

 1.0724, 0.4599,

0.3339

0.3540

346.7801, 0.3326,
0.3337

0.0000, 1.0000,
0.0000

0.0000, 0.0000,
0.0000

55.9413, 0.3495,
0.3371

55.9413, 0.3495,
0.3371

47.4367, 0.3746,
0.3416

65.6727, 0.3288,
0.3328

40.1026, 0.4049,
0.3460

76.6690, 0.3119,
0.3288

33.8900, 0.4405,
0.3500

88.9762, 0.2979,
0.3251

28.7430, 0.4810,
0.3529

94.9034, 0.2952,
0.3289

■ 24.6013, 0.5242,
0.3540

■ 21.3980, 0.5661,
0.3524

■ 19.0582, 0.6011,
0.3478

■ 17.4900, 0.6250,
0.3414

■ 17.4228, 0.6261,
0.3411

Harmonies

Analogous

The Analogous color harmony consists of three colors that are next to each other on the color wheel.



55.9413, 0.3385, 0.3205



55.9413, 0.3495, 0.3371



55.9413, 0.3503, 0.3522

Triad

The Triadic color harmony groups three colors that are evenly spaced from another and form a triangle on the color wheel.



55.9413, 0.3495, 0.3371



55.9413, 0.3042, 0.3533



55.9413, 0.2849, 0.2970

Complementary

The Complementary color scheme is a pair of colors which are on the opposite of each other on the color wheel.



55.9413, 0.3495, 0.3371



66.0863, 0.2832, 0.3207

Split Complementary

Split-complementary colors differ from the complementary color scheme. The scheme consists of three colors, the original color and two neighbors of the complement color.



55.9413, 0.2764, 0.3045



55.9413, 0.3495, 0.3371



55.9413, 0.2873, 0.3371

Square

The Square scheme is like the rectangle color scheme, but the four colors are evenly spaced on the color wheel.



55.9413, 0.3495, 0.3371



55.9413, 0.3237, 0.3624



55.9413, 0.2773, 0.3191



55.9413, 0.3009, 0.2979

Rectangle

The Rectangle color scheme consists of four colors that form a rectangle on the color wheel.



55.9413, 0.3495, 0.3371



55.9413, 0.3449, 0.3595



55.9413, 0.2773, 0.3191



55.9413, 0.2811, 0.2986

Sweetspot

The Sweet Spot groups the original color and five complimentary colors.



55.9438, 0.3495, 0.3371



91.1180, 0.3227, 0.3314



54.7629, 0.3201, 0.2877



19.3041, 0.3238, 0.3317



0.0000, 0.0000, 0.0000



21.4041, 0.3127, 0.3290

Same Dimension

The Same Dimension uses a secret algorithm to generate beautiful new colors.



55.9438, 0.3495, 0.3371



69.2519, 0.3583, 0.3388



65.9251, 0.3450, 0.3611



14.0510, 0.3288, 0.3328



10.0548, 0.6240, 0.3427



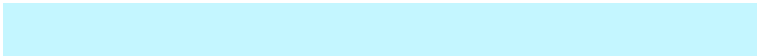
0.8068, 0.5973, 0.3640

Inverse Universe

The Inverse Universe completely reimagines the original color for something new.



66.0863, 0.2832, 0.3207



84.7115, 0.2778, 0.3190



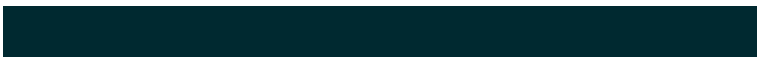
55.5529, 0.2816, 0.2947



15.1814, 0.2982, 0.3252



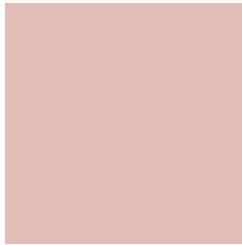
24.2964, 0.2105, 0.2777



1.7851, 0.2129, 0.2864

Previews

White Background



This preview shows how the Yxy color 55.9413, 0.3495, 0.3371 looks on a white background.

Color Contrast Check

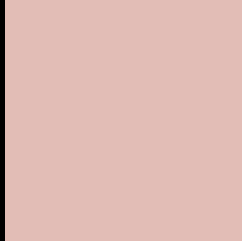
Large Text (above 18pt) WCAG AA × Fail

Any Text WCAG AA × Fail

Large Text (above 18pt) WCAG AAA × Fail

Any Text WCAG AAA × Fail

Black Background



This preview shows how the Yxy color 55.9413, 0.3495, 0.3371 looks on a black background.

Color Contrast Check

Large Text (above 18pt) WCAG AA ✓ Pass

Any Text WCAG AA ✓ Pass

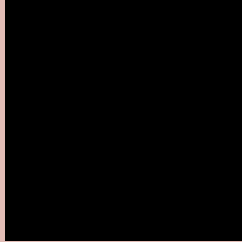
Large Text (above 18pt) WCAG AAA ✓ Pass

Any Text WCAG AAA ✓ Pass

If you want to check with other color combinations, try the [Color Contrast Checker](#).

Yxy 55.9413, 0.3495, 0.3371

Background



This preview shows how black text looks on a background with the Yxy color 55.9413, 0.3495, 0.3371.

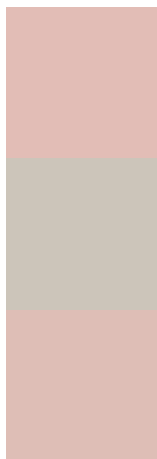


This preview shows how white text looks on a background with the Yxy color 55.9413, 0.3495, 0.3371.

Color Blindness Simulation

Color vision deficiency is a very complex topic, and I could not describe the different causes any better than Wikipedia does, so if you want to learn more, you should check out their [article about color blindness](#).

Dichromacy



Original Color

55.9413, 0.3495, 0.3371

Protanopia

56.3150, 0.3266, 0.3423

Deuteranopia

55.7339, 0.3459, 0.3383



Tritanopia

55.8288, 0.3361, 0.3123

Trichromacy



Original Color

55.9413, 0.3495, 0.3371

Protanomaly

56.0834, 0.3343, 0.3397

Deuteranomaly

55.8923, 0.3468, 0.3383

Tritanomaly

55.7666, 0.3409, 0.3212

Monochromacy



Original Color

55.9413, 0.3495, 0.3371

Achromatopsia

57.1125, 0.3127, 0.3290

Achromatomaly

56.4358, 0.3255, 0.3314

CSS Examples

Text

The CSS property to change the color of the text to Yxy 55.9413, 0.3495, 0.3371 is called "color". The color property can be set on classes, ids or directly on the HTML element.

This example shows how text in the color `rgb(226, 189, 182)` looks like.

```
.text, #text, p{  
    color:rgb(226, 189, 182)  
}
```

If you want to add a text shadow in that color use the text-shadow property, you can generate a text shadow directly with our [CSS Text Shadow Generator](#).

Here you see how black text with a 4 pixel rgb(226, 189, 182) colored shadow looks like.

```
.shadow{ text-shadow: 4px 4px 2px rgb(226, 189, 182) }
```

Border

The CSS property to change the border of an element to Yxy 55.9413, 0.3495, 0.3371 is called "border". The border property can be set on classes, ids or directly on the HTML element.

This example shows the color as border, it can be applied via the CSS property "border" or "border-color".

```
.border, #border, table{ border:4px solid rgb(226, 189, 182) }
```

If only the border color should be changed use the property `border-color`.

```
.border{ border-color:rgb(226, 189, 182) }
```

If you want to add a box shadow in that color use:

Here you see how a box with a 4 pixel `rgb(226, 189, 182)` colored shadow looks like.

```
.boxshadow{ -moz-box-shadow:4px 4px 4px  
4px rgb(226, 189, 182); -webkit-box-  
shadow:4px 4px 4px 4px rgb(226, 189, 182);  
box-shadow:4px 4px 4px 4px rgb(226, 189,  
182) }
```


Background

The CSS property to change the background color of an element to Yxy 55.9413, 0.3495, 0.3371 is called "background". The background property can be set on classes, ids or directly on the HTML element.

```
.background, #background, body{  
background: rgb(226, 189, 182) }
```

If only the background color should be changed can be used:

```
.background{ background-color: rgb(226,  
189, 182) }
```

This example shows the color as background, it is applied via the CSS property "background".

To optimize and compress your CSS code, you can use our [online CSS compressor and optimizer](#) based on csstidy. If you want to create a linear or radial gradient as background or border, check our [CSS Gradient Generator](#).

Hey! You found this booklet interesting? Support Converting Colors with the new Membership Option!

The pro membership hides all ads, plus gives you double the colors in the color bucket, and more awesome pro features!

[Learn more, Memberships starting at \\$2.50/m!](#)

**Follow me
on Twitter!**

@ConvertingColor