

Converting Colors

Yxy(55.9380, 0.3697, 0.3698)

Have a look what the booklet for
Yxy(55.9380, 0.3697, 0.3698)
contains.

Yxy(55.6695, 0.3697, 0.3696)	3
<i>Conversions</i>	4
<i>Details</i>	6
<i>Harmonies</i>	12
<i>Previews</i>	24
<i>Color Blindness Simulation</i>	27
<i>CSS Examples</i>	30

Color

Yxy(55.6695, 0.3697, 0.3696)

Conversions

Conversions Part 1

Format	Color
Hex	E1BF9C
RGB	225, 191, 156
RGB Percent	88%, 75%, 61%
CMY	0.1176, 0.2510, 0.3882
CMYK	0.00, 0.15, 0.31, 0.12
HSL	30°, 53%, 75%
HSV	30°, 31%, 88%
XYZ	55.6846, 55.6695, 39.2669
YIQ	197.1760, 31.4990, -3.6770

Conversions

Conversions Part 2

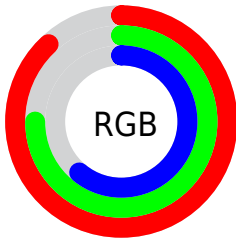
Format	Color
R_{YB}	223, 225, 156
Decimal	14794652
CIE _{Lab}	79.43, 7.06, 22.17
CIE _{LCh}	79, 23.265, 72.330
Yxy	55.6695, 0.3697, 0.3696
Android (android.graphics.Color)	4292984732 (0xFFE1BF9C)
YUV	197.1760, -20.2998, 24.4016
Hunter-Lab	74.6120, 2.6475, 21.0252

Details

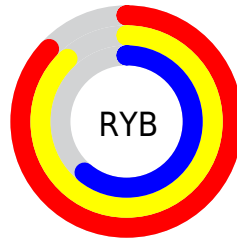
The Yxy color $55.6695, 0.3697, 0.3696$ is a light color, and the websafe version is hex `FFCC99`. A complement of this color would be $49.3375, 0.2637, 0.2845$, and the grayscale version is $56.0595, 0.3127, 0.3290$.

A 20% lighter version of the original color is $92.4847, 0.3400, 0.3646$, and $27.6319, 0.3843, 0.3793$ is the 20% darker color. If you saturate the color by 10%, you get $50.3241, 0.3931, 0.3832$, and if you desaturate by 10%, it is $61.5275, 0.3487, 0.3559$.

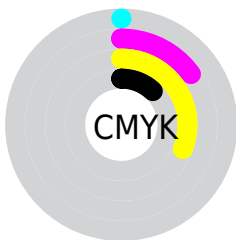
Distribution



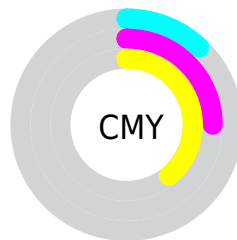
- Red (88%)
- Green (75%)
- Blue (61%)



- Red (87%)
- Yellow (88%)
- Blue (61%)



- Cyan (0%)
- Magenta (15%)
- Yellow (31%)
- Black (12%)





- Cyan (12%)
- Magenta (25%)
- Yellow (39%)

Brightness & Saturation Gradients


These gradients show how the Yxy color 55.6695, 0.3697, 0.3696 changes by changing the brightness by 10 percent. The first figure shows a shift by +10% for each color and the second figure -10%.


Similar to the brightness gradients but the following saturation gradients show a change of the Yxy color 55.6695, 0.3697, 0.3696 by changing the saturation by 10% instead.


 55.6695, 0.3697,
0.3696


 55.6695, 0.3697,
0.3696


408.4448, 0.3420,
0.3504

 39.9380, 0.3763,
0.3740

 98.5212, 0.3598,
0.3629

 27.4902, 0.3847,
0.3795


 126.4102, 0.3561,
0.3603

 17.9417, 0.3955,
0.3863


159.1204, 0.3529,
0.3581

 10.9082, 0.4099,
0.3952

197.0364, 0.3501,
0.3562

 6.0051, 0.4300,
0.4068

240.5424, 0.3477,
0.3545

 2.8482, 0.4600,
0.4226

290.0229, 0.3455,

 1.0530, 0.5341,

0.3530

0.4659

345.8622, 0.3437,
0.3516

0.0000, 1.0000,
0.0000

0.0000, 0.0000,
0.0000

55.6695, 0.3697,
0.3696

55.6695, 0.3697,
0.3696

50.3241, 0.3931,
0.3832

61.5275, 0.3487,
0.3559

45.4676, 0.4187,
0.3960

67.9053, 0.3300,
0.3425

41.0857, 0.4457,
0.4068

74.8198, 0.3137,
0.3298

37.1603, 0.4730,
0.4144

82.2846, 0.2995,
0.3180

■ 33.6713, 0.4991,
0.4176

■ 89.4116, 0.2945,
0.3203

■ 30.5964, 0.5222,
0.4155

■ 94.7483, 0.2946,
0.3289

■ 28.0698, 0.5404,
0.4091

Harmonies

Analogous

The Analogous color harmony consists of three colors that are next to each other on the color wheel.



55.6695, 0.3730, 0.3471



55.6695, 0.3697, 0.3696



55.6695, 0.3507, 0.3826

Triad

The Triadic color harmony groups three colors that are evenly spaced from another and form a triangle on the color wheel.



55.6695, 0.3697, 0.3696



55.6695, 0.2679, 0.3342



55.6695, 0.3012, 0.2832

Complementary

The Complementary color scheme is a pair of colors which are on the opposite of each other on the color wheel.



55.6695, 0.3697, 0.3696



49.3375, 0.2637, 0.2845

Split Complementary

Split-complementary colors differ from the complementary color scheme. The scheme consists of three colors, the original color and two neighbors of the complement color.



55.6695, 0.2744, 0.2785



55.6695, 0.3697, 0.3696



55.6695, 0.2560, 0.3061

Square

The Square scheme is like the rectangle color scheme, but the four colors are evenly spaced on the color wheel.



55.6695, 0.3697, 0.3696



55.6695, 0.2917, 0.3624



55.6695, 0.2583, 0.2863



55.6695, 0.3323, 0.2987

Rectangle

The Rectangle color scheme consists of four colors that form a rectangle on the color wheel.



55.6695, 0.3697, 0.3696



55.6695, 0.3321, 0.3831



55.6695, 0.2583, 0.2863



55.6695, 0.2914, 0.2803

Sweetspot

The Sweet Spot groups the original color and five complimentary colors.



55.6721, 0.3697, 0.3696



91.6039, 0.3273, 0.3404



43.5288, 0.3475, 0.2893



19.3284, 0.3298, 0.3423



0.0000, 0.0000, 0.0000



21.4041, 0.3127, 0.3290

Same Dimension

The Same Dimension uses a secret algorithm to generate beautiful new colors.



55.6721, 0.3697, 0.3696



69.1783, 0.3849, 0.3786



72.2619, 0.3589, 0.4053



14.8439, 0.3279, 0.3409



16.4089, 0.5381, 0.4109



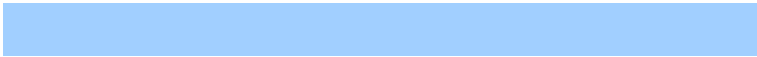
1.3165, 0.5149, 0.4294

Inverse Universe

The Inverse Universe completely reimagines the original color for something new.



49.3375, 0.2637, 0.2845



59.4577, 0.2528, 0.2732



36.2860, 0.2584, 0.2393



14.3532, 0.2981, 0.3168



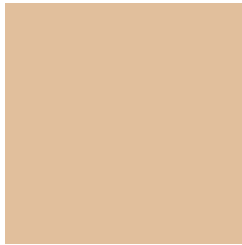
9.9022, 0.1767, 0.1560



0.8653, 0.1845, 0.1842

Previews

White Background



This preview shows how the Yxy color 55.6695, 0.3697, 0.3696 looks on a white background.

Color Contrast Check

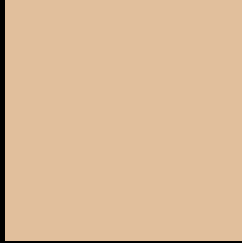
Large Text (above 18pt) WCAG AA × Fail

Any Text WCAG AA × Fail

Large Text (above 18pt) WCAG AAA × Fail

Any Text WCAG AAA × Fail

Black Background



This preview shows how the Yxy color 55.6695, 0.3697, 0.3696 looks on a black background.

Color Contrast Check

Large Text (above 18pt) WCAG AA ✓ Pass

Any Text WCAG AA ✓ Pass

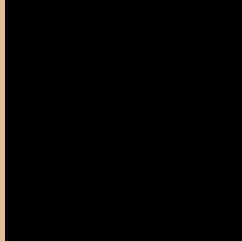
Large Text (above 18pt) WCAG AAA ✓ Pass

Any Text WCAG AAA ✓ Pass

If you want to check with other color combinations, try the [Color Contrast Checker](#).

Yxy 55.6695, 0.3697, 0.3696

Background



This preview shows how black text looks on a background with the Yxy color 55.6695, 0.3697, 0.3696.



This preview shows how white text looks on a background with the Yxy color 55.6695, 0.3697, 0.3696.

Color Blindness Simulation

Color vision deficiency is a very complex topic, and I could not describe the different causes any better than Wikipedia does, so if you want to learn more, you should check out their [article about color blindness](#).

Dichromacy



Original Color

55.6695, 0.3697, 0.3696

Protanopia

55.9910, 0.3516, 0.3749

Deuteranopia

55.6185, 0.3748, 0.3668



Tritanopia

55.6444, 0.3396, 0.3134

Trichromacy



Original Color

55.6695, 0.3697, 0.3696

Protanomaly

55.9459, 0.3581, 0.3730

Deuteranomaly

55.7212, 0.3727, 0.3681

Tritanomaly

55.4535, 0.3509, 0.3337

Monochromacy



Original Color

55.6695, 0.3697, 0.3696

Achromatopsia

55.8340, 0.3127, 0.3290

Achromatomaly

55.6730, 0.3324, 0.3446

CSS Examples

Text

The CSS property to change the color of the text to Yxy 55.6695, 0.3697, 0.3696 is called "color". The color property can be set on classes, ids or directly on the HTML element.

This example shows how text in the color `rgb(225, 191, 156)` looks like.

```
.text, #text, p{  
    color:rgb(225, 191, 156)  
}
```

If you want to add a text shadow in that color use the text-shadow property, you can generate a text shadow directly with our [CSS Text Shadow Generator](#).

Here you see how black text with a 4 pixel rgb(225, 191, 156) colored shadow looks like.

```
.shadow{ text-shadow: 4px 4px 2px rgb(225, 191, 156) }
```

Border

The CSS property to change the border of an element to Yxy 55.6695, 0.3697, 0.3696 is called "border". The border property can be set on classes, ids or directly on the HTML element.

This example shows the color as border, it can be applied via the CSS property "border" or "border-color".

```
.border, #border, table{ border:4px solid rgb(225, 191, 156) }
```

If only the border color should be changed use the property `border-color`.

```
.border{ border-color:rgb(225, 191, 156) }
```

If you want to add a box shadow in that color use:

Here you see how a box with a 4 pixel `rgb(225, 191, 156)` colored shadow looks like.

```
.boxshadow{ -moz-box-shadow:4px 4px 4px  
4px rgb(225, 191, 156); -webkit-box-  
shadow:4px 4px 4px 4px rgb(225, 191, 156);  
box-shadow:4px 4px 4px 4px rgb(225, 191,  
156) }
```


Background

The CSS property to change the background color of an element to Yxy 55.6695, 0.3697, 0.3696 is called "background". The background property can be set on classes, ids or directly on the HTML element.

```
.background, #background, body{  
background: rgb(225, 191, 156) }
```

If only the background color should be changed can be used:

```
.background{ background-color: rgb(225,  
191, 156) }
```

This example shows the color as background, it is applied via the CSS property "background".

To optimize and compress your CSS code, you can use our [online CSS compressor and optimizer](#) based on csstidy. If you want to create a linear or radial gradient as background or border, check our [CSS Gradient Generator](#).

Hey! You found this booklet interesting? Support Converting Colors with the new Membership Option!

The pro membership hides all ads, plus gives you double the colors in the color bucket, and more awesome pro features!

[Learn more, Memberships starting at \\$2.50/m!](#)

**Follow me
on Twitter!**

@ConvertingColor