

Converting Colors

Yxy(56.0250, 0.3391, 0.3456)

Have a look what the booklet for
Yxy(56.0250, 0.3391, 0.3456)
contains.

Yxy(56.0250, 0.3391, 0.3456)	3
Conversions	4
Details	6
Harmonies	12
Previews	24
Color Blindness Simulation	27
CSS Examples	30

Color

Yxy(56.0250, 0.3391, 0.3456)

Conversions

Conversions Part 1

Format	Color
Hex	D5C2B4
RGB	213, 194, 180
RGB Percent	84%, 76%, 71%
CMY	0.1647, 0.2392, 0.2940
CMYK	0.00, 0.09, 0.15, 0.16
HSL	25°, 28%, 77%
HSV	25°, 15%, 84%
XYZ	54.9713, 56.0250, 51.1131
YIQ	198.0850, 15.8180, -0.3260

Conversions

Conversions Part 2

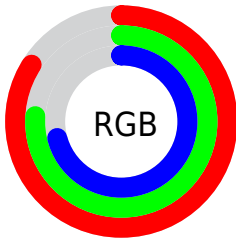
Format	Color
R _Y B	213, 204, 180
Decimal	14009012
CIE Lab	79.63, 4.39, 9.44
CIE LCh	80, 10.412, 65.037
Yxy	56.0250, 0.3391, 0.3456
Android (android.graphics.Color)	4292199092 (0xFFD5C2B4)
YUV	198.0850, -8.9159, 13.0805
Hunter-Lab	74.8498, 0.1069, 11.9072

Details

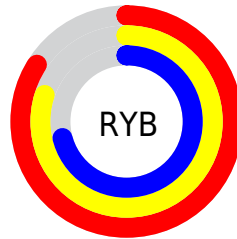
The Yxy color **56.0250, 0.3391, 0.3456** is a light color, and the websafe version is hex **CCCCCC**. A complement of this color would be **55.3667, 0.2887, 0.3118**, and the grayscale version is **56.5763, 0.3127, 0.3290**.

A 20% lighter version of the original color is **95.6873, 0.3243, 0.3426**, and **27.5576, 0.3465, 0.3496** is the 20% darker color. If you saturate the color by 10%, you get **49.9866, 0.3596, 0.3570**, and if you desaturate by 10%, it is **62.6528, 0.3214, 0.3347**.

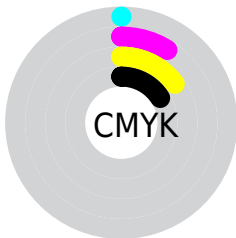
Distribution



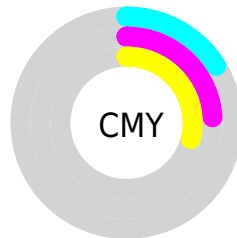
- Red (84%)
- Green (76%)
- Blue (71%)



- Red (84%)
- Yellow (80%)
- Blue (71%)



- Cyan (0%)
- Magenta (9%)
- Yellow (15%)
- Black (16%)





- Cyan (16%)
- Magenta (24%)
- Yellow (29%)

Brightness & Saturation Gradients


These gradients show how the Yxy color 56.0250, 0.3391, 0.3456 changes by changing the brightness by 10 percent. The first figure shows a shift by +10% for each color and the second figure -10%.


Similar to the brightness gradients but the following saturation gradients show a change of the Yxy color 56.0250, 0.3391, 0.3456 by changing the saturation by 10% instead.


 56.0250, 0.3391,
0.3456

 56.0250, 0.3391,
0.3456


409.7857, 0.3263,
0.3377

 40.2230, 0.3422,
0.3475


 99.0411, 0.3345,
0.3428

 27.7124, 0.3461,
0.3498


127.0240, 0.3328,
0.3417

 18.1090, 0.3513,
0.3529


159.8360, 0.3313,
0.3408

 11.0283, 0.3582,
0.3569

197.8614, 0.3300,
0.3400

 6.0859, 0.3683,
0.3626

241.4847, 0.3289,
0.3393

 2.8974, 0.3839,
0.3711

291.0903, 0.3279,

 1.0784, 0.4219,

0.3387

347.0625, 0.3270,
0.3382

0.3948

0.0000, 1.0000,
0.0000

0.0000, 0.0000,
0.0000

56.0250, 0.3391,
0.3456

56.0250, 0.3391,
0.3456

49.9866, 0.3596,
0.3570

62.6528, 0.3214,
0.3347

44.5132, 0.3831,
0.3686

69.8786, 0.3061,
0.3245

39.5894, 0.4095,
0.3798

77.7204, 0.2930,
0.3150

35.1965, 0.4387,
0.3898

85.5165, 0.2872,
0.3166

■ 31.3143, 0.4695,
0.3974

■ 92.8850, 0.2877,
0.3289

■ 27.9213, 0.5005,
0.4013

■ 24.9934, 0.5296,
0.4004

■ 22.5040, 0.5543,
0.3940

■ 21.5072, 0.5644,
0.3901

Harmonies

Analogous

The Analogous color harmony consists of three colors that are next to each other on the color wheel.



56.0250, 0.3385, 0.3350



56.0250, 0.3391, 0.3456



56.0250, 0.3324, 0.3521

Triad

The Triadic color harmony groups three colors that are evenly spaced from another and form a triangle on the color wheel.



56.0250, 0.3391, 0.3456



56.0250, 0.2947, 0.3347



56.0250, 0.3045, 0.3068

Complementary

The Complementary color scheme is a pair of colors which are on the opposite of each other on the color wheel.



56.0250, 0.3391, 0.3456



55.3667, 0.2887, 0.3118

Split Complementary

Split-complementary colors differ from the complementary color scheme. The scheme consists of three colors, the original color and two neighbors of the complement color.



56.0250, 0.2931, 0.3063



56.0250, 0.3391, 0.3456



56.0250, 0.2876, 0.3221

Square

The Square scheme is like the rectangle color scheme, but the four colors are evenly spaced on the color wheel.



56.0250, 0.3391, 0.3456



56.0250, 0.3067, 0.3459



56.0250, 0.2870, 0.3118



56.0250, 0.3183, 0.3129

Rectangle

The Rectangle color scheme consists of four colors that form a rectangle on the color wheel.



56.0250, 0.3391, 0.3456



56.0250, 0.3249, 0.3530



56.0250, 0.2870, 0.3118



56.0250, 0.3003, 0.3060

Sweetspot

The Sweet Spot groups the original color and five complimentary colors.



56.0275, 0.3391, 0.3456



94.6088, 0.3207, 0.3342



50.9361, 0.3255, 0.3065



20.0920, 0.3218, 0.3350



0.0000, 0.0000, 0.0000



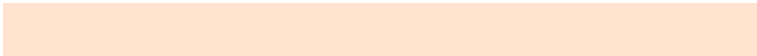
21.4041, 0.3127, 0.3290

Same Dimension

The Same Dimension uses a secret algorithm to generate beautiful new colors.



56.0275, 0.3391, 0.3456



80.7303, 0.3464, 0.3498



63.6562, 0.3363, 0.3641



13.2776, 0.3281, 0.3389



13.3315, 0.5619, 0.3920



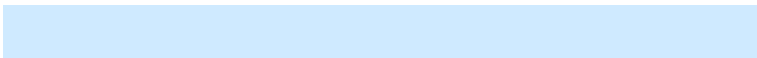
0.9661, 0.5314, 0.4162

Inverse Universe

The Inverse Universe completely reimagines the original color for something new.



55.3667, 0.2887, 0.3118



79.5288, 0.2828, 0.3073



48.2867, 0.2879, 0.2913



13.1848, 0.2982, 0.3189



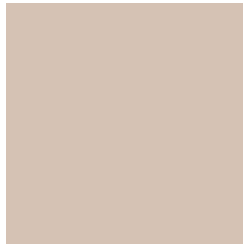
11.7488, 0.1847, 0.1847



0.8711, 0.1923, 0.2121

Previews

White Background



This preview shows how the Yxy color 56.0250, 0.3391, 0.3456 looks on a white background.

Color Contrast Check

Large Text (above 18pt) WCAG AA × Fail

Any Text WCAG AA × Fail

Large Text (above 18pt) WCAG AAA × Fail

Any Text WCAG AAA × Fail

Black Background



This preview shows how the Yxy color 56.0250, 0.3391, 0.3456 looks on a black background.

Color Contrast Check

Large Text (above 18pt) WCAG AA ✓ Pass

Any Text WCAG AA ✓ Pass

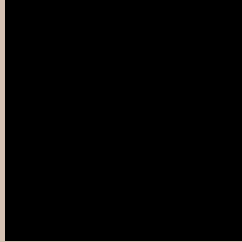
Large Text (above 18pt) WCAG AAA ✓ Pass

Any Text WCAG AAA ✓ Pass

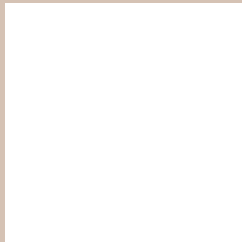
If you want to check with other color combinations, try the [Color Contrast Checker](#).

Yxy 56.0250, 0.3391, 0.3456

Background



This preview shows how black text looks on a background with the Yxy color 56.0250, 0.3391, 0.3456.



This preview shows how white text looks on a background with the Yxy color 56.0250, 0.3391, 0.3456.

Color Blindness Simulation

Color vision deficiency is a very complex topic, and I could not describe the different causes any better than Wikipedia does, so if you want to learn more, you should check out their [article about color blindness](#).

Dichromacy



Original Color

56.0250, 0.3391, 0.3456

Protanopia

56.2478, 0.3312, 0.3483

Deuteranopia

55.8511, 0.3476, 0.3395



Tritanopia

55.8336, 0.3225, 0.3118

Trichromacy



Original Color

56.0250, 0.3391, 0.3456

Protanomaly

56.2259, 0.3338, 0.3470

Deuteranomaly

55.6579, 0.3440, 0.3407

Tritanomaly

55.6942, 0.3286, 0.3232

Monochromacy



Original Color

56.0250, 0.3391, 0.3456

Achromatopsia

56.4712, 0.3127, 0.3290

Achromatomaly

56.3906, 0.3220, 0.3362

CSS Examples

Text

The CSS property to change the color of the text to Yxy 56.0250, 0.3391, 0.3456 is called "color". The color property can be set on classes, ids or directly on the HTML element.

This example shows how text in the color `rgb(213, 194, 180)` looks like.

```
.text, #text, p{  
    color:rgb(213, 194, 180)  
}
```

If you want to add a text shadow in that color use the text-shadow property, you can generate a text shadow directly with our [CSS Text Shadow Generator](#).

Here you see how black text with a 4 pixel rgb(213, 194, 180) colored shadow looks like.

```
.shadow{ text-shadow: 4px 4px 2px rgb(213, 194, 180) }
```

Border

The CSS property to change the border of an element to Yxy 56.0250, 0.3391, 0.3456 is called "border". The border property can be set on classes, ids or directly on the HTML element.

This example shows the color as border, it can be applied via the CSS property "border" or "border-color".

```
.border, #border, table{ border:4px solid rgb(213, 194, 180) }
```

If only the border color should be changed use the property `border-color`.

```
.border{ border-color:rgb(213, 194, 180) }
```

If you want to add a box shadow in that color use:

Here you see how a box with a 4 pixel `rgb(213, 194, 180)` colored shadow looks like.

```
.boxshadow{ -moz-box-shadow:4px 4px 4px  
4px rgb(213, 194, 180); -webkit-box-  
shadow:4px 4px 4px 4px rgb(213, 194, 180);  
box-shadow:4px 4px 4px 4px rgb(213, 194,  
180) }
```


Background

The CSS property to change the background color of an element to Yxy 56.0250, 0.3391, 0.3456 is called "background". The background property can be set on classes, ids or directly on the HTML element.

```
.background, #background, body{  
background: rgb(213, 194, 180) }
```

If only the background color should be changed can be used:

```
.background{ background-color: rgb(213,  
194, 180) }
```

This example shows the color as background, it is applied via the CSS property "background".

To optimize and compress your CSS code, you can use our [online CSS compressor and optimizer](#) based on csstidy. If you want to create a linear or radial gradient as background or border, check our [CSS Gradient Generator](#).

Hey! You found this booklet interesting? Support Converting Colors with the new Membership Option!

The pro membership hides all ads, plus gives you double the colors in the color bucket, and more awesome pro features!

[Learn more, Memberships starting at \\$2.50/m!](#)

**Follow me
on Twitter!**

@ConvertingColor