

Converting Colors

$Yxy(56.0794, 0.3402, 0.3452)$

Have a look what the booklet for
Yxy(56.0794, 0.3402, 0.3452)
contains.

Yxy(56.1750, 0.3400, 0.3456)	3
Conversions	4
Details	6
Harmonies	12
Previews	24
Color Blindness Simulation	27
CSS Examples	30

Color

Yxy(56.1750, 0.3400, 0.3456)

Conversions

Conversions Part 1

Format	Color
Hex	D6C2B4
RGB	214, 194, 180
RGB Percent	84%, 76%, 71%
CMY	0.1607, 0.2392, 0.2942
CMYK	0.00, 0.09, 0.16, 0.16
HSL	25°, 29%, 77%
HSV	25°, 16%, 84%
XYZ	55.2648, 56.1750, 51.1036
YIQ	198.3840, 16.4140, -0.1140

Conversions

Conversions Part 2

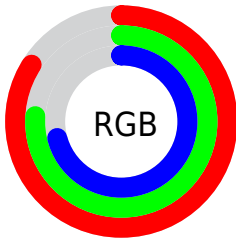
Format	Color
R_{YB}	214, 204, 180
Decimal	14074548
CIE _{Lab}	79.71, 4.77, 9.60
CIE _{LCh}	80, 10.714, 63.585
Yxy	56.1750, 0.3400, 0.3456
Android (android.graphics.Color)	4292264628 (0xFFD6C2B4)
YUV	198.3840, -9.0633, 13.6952
Hunter-Lab	74.9500, 0.4554, 12.0389

Details

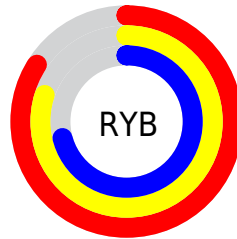
The Yxy color $56.1750, 0.3400, 0.3456$ is a light color, and the websafe version is hex `CCCCCC`. A complement of this color would be $55.8711, 0.2881, 0.3118$, and the grayscale version is $56.7687, 0.3127, 0.3290$.

A 20% lighter version of the original color is $95.6873, 0.3243, 0.3426$, and $27.6594, 0.3476, 0.3495$ is the 20% darker color. If you saturate the color by 10%, you get $50.0024, 0.3608, 0.3567$, and if you desaturate by 10%, it is $62.9622, 0.3221, 0.3350$.

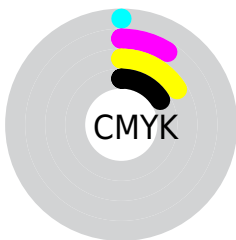
Distribution



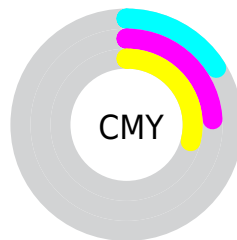
- Red (84%)
- Green (76%)
- Blue (71%)



- Red (84%)
- Yellow (80%)
- Blue (71%)



- Cyan (0%)
- Magenta (9%)
- Yellow (16%)
- Black (16%)





- Cyan (16%)
- Magenta (24%)
- Yellow (29%)

Brightness & Saturation Gradients

These gradients show how the Yxy color 56.1750, 0.3400, 0.3456 changes by changing the brightness by 10 percent. The first figure shows a shift by +10% for each color and the second figure -10%.


Similar to the brightness gradients but the following saturation gradients show a change of the Yxy color 56.1750, 0.3400, 0.3456 by changing the saturation by 10% instead.

 56.1750, 0.3400,
0.3456

 56.1750, 0.3400,
0.3456

410.3507, 0.3267,
0.3377

 40.3432, 0.3432,
0.3475


 99.2604, 0.3353,
0.3428

 27.8063, 0.3473,
0.3498


127.2828, 0.3334,
0.3417

 18.1797, 0.3526,
0.3528


160.1376, 0.3319,
0.3408

 11.0791, 0.3598,
0.3569

198.2092, 0.3306,
0.3400

 6.1200, 0.3701,
0.3625

241.8818, 0.3294,
0.3393

 2.9182, 0.3862,
0.3708

291.5401, 0.3284,

 1.0892, 0.4250,

0.3387

0.3941

347.5682, 0.3275,
0.3382

0.0000, 1.0000,
0.0000

0.0000, 0.0000,
0.0000

56.1750, 0.3400,
0.3456

56.1750, 0.3400,
0.3456

50.0024, 0.3608,
0.3567

62.9622, 0.3221,
0.3350

44.4190, 0.3846,
0.3680

70.3735, 0.3067,
0.3250

39.4084, 0.4115,
0.3789

78.4277, 0.2935,
0.3158

34.9508, 0.4411,
0.3884

86.4391, 0.2878,
0.3180

■ 31.0249, 0.4726,
0.3956

■ 93.0392, 0.2883,
0.3289

■ 27.6076, 0.5042,
0.3991

■ 24.6739, 0.5337,
0.3977

■ 22.1952, 0.5587,
0.3909

■ 21.2971, 0.5680,
0.3872

Harmonies

Analogous

The Analogous color harmony consists of three colors that are next to each other on the color wheel.



56.1750, 0.3391, 0.3345



56.1750, 0.3400, 0.3456



56.1750, 0.3335, 0.3526

Triad

The Triadic color harmony groups three colors that are evenly spaced from another and form a triangle on the color wheel.



56.1750, 0.3400, 0.3456



56.1750, 0.2947, 0.3355



56.1750, 0.3036, 0.3061

Complementary

The Complementary color scheme is a pair of colors which are on the opposite of each other on the color wheel.



56.1750, 0.3400, 0.3456



55.8711, 0.2881, 0.3118

Split Complementary

Split-complementary colors differ from the complementary color scheme. The scheme consists of three colors, the original color and two neighbors of the complement color.



56.1750, 0.2921, 0.3058



56.1750, 0.3400, 0.3456



56.1750, 0.2871, 0.3225

Square

The Square scheme is like the rectangle color scheme, but the four colors are evenly spaced on the color wheel.



56.1750, 0.3400, 0.3456



56.1750, 0.3072, 0.3469



56.1750, 0.2861, 0.3117



56.1750, 0.3178, 0.3121

Rectangle

The Rectangle color scheme consists of four colors that form a rectangle on the color wheel.



56.1750, 0.3400, 0.3456



56.1750, 0.3258, 0.3537



56.1750, 0.2861, 0.3117



56.1750, 0.2993, 0.3053

Sweetspot

The Sweet Spot groups the original color and five complimentary colors.



56.1775, 0.3400, 0.3456



94.5131, 0.3207, 0.3341



51.1266, 0.3255, 0.3052



20.0687, 0.3218, 0.3348



0.0000, 0.0000, 0.0000



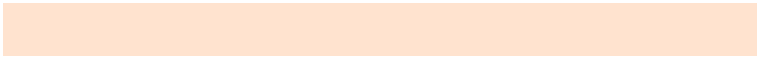
21.4041, 0.3127, 0.3290

Same Dimension

The Same Dimension uses a secret algorithm to generate beautiful new colors.



56.1775, 0.3400, 0.3456



80.4064, 0.3465, 0.3492



63.9924, 0.3370, 0.3645



13.2522, 0.3281, 0.3386



13.0640, 0.5654, 0.3893



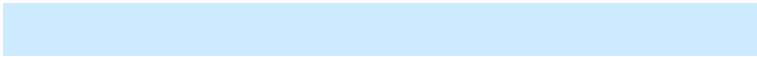
0.9489, 0.5343, 0.4139

Inverse Universe

The Inverse Universe completely reimagines the original color for something new.



55.8711, 0.2881, 0.3118



79.8677, 0.2829, 0.3079



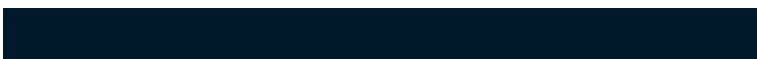
48.5872, 0.2872, 0.2909



13.2107, 0.2982, 0.3192



12.1472, 0.1859, 0.1890



0.8940, 0.1933, 0.2157

Previews

White Background



This preview shows how the Yxy color 56.1750, 0.3400, 0.3456 looks on a white background.

Color Contrast Check

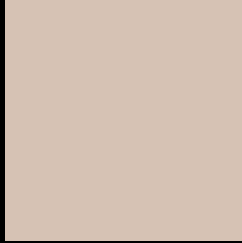
Large Text (above 18pt) WCAG AA × Fail

Any Text WCAG AA × Fail

Large Text (above 18pt) WCAG AAA × Fail

Any Text WCAG AAA × Fail

Black Background



This preview shows how the Yxy color 56.1750, 0.3400, 0.3456 looks on a black background.

Color Contrast Check

Large Text (above 18pt) WCAG AA ✓ Pass

Any Text WCAG AA ✓ Pass

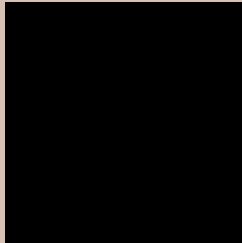
Large Text (above 18pt) WCAG AAA ✓ Pass

Any Text WCAG AAA ✓ Pass

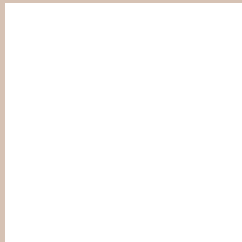
If you want to check with other color combinations, try the [Color Contrast Checker](#).

Yxy 56.1750, 0.3400, 0.3456

Background



This preview shows how black text looks on a background with the Yxy color 56.1750, 0.3400, 0.3456.



This preview shows how white text looks on a background with the Yxy color 56.1750, 0.3400, 0.3456.

Color Blindness Simulation

Color vision deficiency is a very complex topic, and I could not describe the different causes any better than Wikipedia does, so if you want to learn more, you should check out their [article about color blindness](#).

Dichromacy



Original Color

56.1750, 0.3400, 0.3456

Protanopia

56.2890, 0.3304, 0.3471

Deuteranopia

56.2858, 0.3474, 0.3406



Tritanopia

55.9864, 0.3233, 0.3118

Trichromacy



Original Color

56.1750, 0.3400, 0.3456

Protanomaly

56.2259, 0.3338, 0.3470

Deuteranomaly

56.2511, 0.3446, 0.3419

Tritanomaly

55.8461, 0.3294, 0.3233

Monochromacy



Original Color

56.1750, 0.3400, 0.3456

Achromatopsia

56.4712, 0.3127, 0.3290

Achromatomaly

56.5315, 0.3228, 0.3362

CSS Examples

Text

The CSS property to change the color of the text to Yxy 56.1750, 0.3400, 0.3456 is called "color". The color property can be set on classes, ids or directly on the HTML element.

This example shows how text in the color `rgb(214, 194, 180)` looks like.

```
.text, #text, p{  
    color:rgb(214, 194, 180)  
}
```

If you want to add a text shadow in that color use the text-shadow property, you can generate a text shadow directly with our [CSS Text Shadow Generator](#).

Here you see how black text with a 4 pixel rgb(214, 194, 180) colored shadow looks like.

```
.shadow{ text-shadow: 4px 4px 2px rgb(214, 194, 180) }
```

Border

The CSS property to change the border of an element to Yxy 56.1750, 0.3400, 0.3456 is called "border". The border property can be set on classes, ids or directly on the HTML element.

This example shows the color as border, it can be applied via the CSS property "border" or "border-color".

```
.border, #border, table{ border:4px solid rgb(214, 194, 180) }
```

If only the border color should be changed use the property border-color.

```
.border{ border-color:rgb(214, 194, 180) }
```

If you want to add a box shadow in that color use:

Here you see how a box with a 4 pixel rgb(214, 194, 180) colored shadow looks like.

```
.boxshadow{ -moz-box-shadow:4px 4px 4px  
4px rgb(214, 194, 180); -webkit-box-  
shadow:4px 4px 4px 4px rgb(214, 194, 180);  
box-shadow:4px 4px 4px 4px rgb(214, 194,  
180) }
```


Background

The CSS property to change the background color of an element to Yxy 56.1750, 0.3400, 0.3456 is called "background". The background property can be set on classes, ids or directly on the HTML element.

```
.background, #background, body{  
background: rgb(214, 194, 180) }
```

If only the background color should be changed can be used:

```
.background{ background-color: rgb(214,  
194, 180) }
```

This example shows the color as background, it is applied via the CSS property "background".

To optimize and compress your CSS code, you can use our [online CSS compressor and optimizer](#) based on csstidy. If you want to create a linear or radial gradient as background or border, check our [CSS Gradient Generator](#).

Hey! You found this booklet interesting? Support Converting Colors with the new Membership Option!

The pro membership hides all ads, plus gives you double the colors in the color bucket, and more awesome pro features!

[Learn more, Memberships starting at \\$2.50/m!](#)

**Follow me
on Twitter!**

@ConvertingColor