

Converting Colors

Yxy(56.1606, 0.3484, 0.3491)

Have a look what the booklet for
Yxy(56.1606, 0.3484, 0.3491)
contains.

Yxy(56.2951, 0.3484, 0.3501)	3
Conversions	4
Details	6
Harmonies	12
Previews	24
Color Blindness Simulation	27
CSS Examples	30

Color

Yxy(56.2951, 0.3484, 0.3501)

Conversions

Conversions Part 1

Format	Color
Hex	DBC1AF
RGB	219, 193, 175
RGB Percent	86%, 76%, 69%
CMY	0.1412, 0.2431, 0.3136
CMYK	0.00, 0.12, 0.20, 0.14
HSL	25°, 38%, 77%
HSV	25°, 20%, 86%
XYZ	56.0217, 56.2951, 48.4804
YIQ	198.7220, 21.2740, -0.0860

Conversions

Conversions Part 2

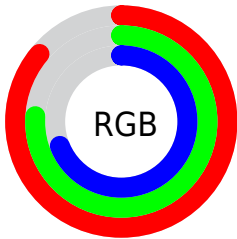
Format	Color
R_{YB}	219, 205, 175
Decimal	14401967
CIE _{Lab}	79.78, 6.37, 12.42
CIE _{LCh}	80, 13.958, 62.848
Yxy	56.2951, 0.3484, 0.3501
Android (android.graphics.Color)	4292592047 (0xFFDBC1AF)
YUV	198.7220, -11.6949, 17.7838
Hunter-Lab	75.0301, 1.9757, 14.2111

Details

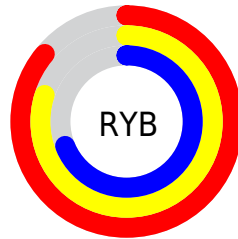
The Yxy color **56.2951, 0.3484, 0.3501** is a light color, and the websafe version is hex **CCCCCC**. A complement of this color would be **56.0091, 0.2814, 0.3069**, and the grayscale version is **56.9994, 0.3127, 0.3290**.

A 20% lighter version of the original color is **94.7809, 0.3274, 0.3466**, and **28.0787, 0.3577, 0.3554** is the 20% darker color. If you saturate the color by 10%, you get **50.0309, 0.3705, 0.3613**, and if you desaturate by 10%, it is **63.2048, 0.3293, 0.3393**.

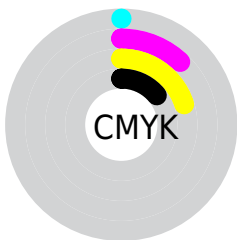
Distribution



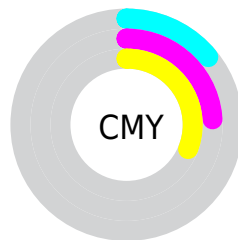
- Red (86%)
- Green (76%)
- Blue (69%)



- Red (86%)
- Yellow (80%)
- Blue (69%)



- Cyan (0%)
- Magenta (12%)
- Yellow (20%)
- Black (14%)





- Cyan (14%)
- Magenta (24%)
- Yellow (31%)

Brightness & Saturation Gradients


These gradients show how the Yxy color 56.2951, 0.3484, 0.3501 changes by changing the brightness by 10 percent. The first figure shows a shift by +10% for each color and the second figure -10%.


Similar to the brightness gradients but the following saturation gradients show a change of the Yxy color 56.2951, 0.3484, 0.3501 by changing the saturation by 10% instead.

 56.2951, 0.3484,
0.3501

 56.2951, 0.3484,
0.3501

410.8027, 0.3310,
0.3401

 40.4396, 0.3526,
0.3524


 99.4359, 0.3422,
0.3466

 27.8814, 0.3579,
0.3554

127.4900, 0.3398,
0.3452

 18.2363, 0.3648,
0.3591


160.3790, 0.3378,
0.3441

 11.1198, 0.3742,
0.3640

198.4875, 0.3361,
0.3431

 6.1475, 0.3877,
0.3708

242.1996, 0.3346,
0.3422

 2.9350, 0.4084,
0.3805

291.9000, 0.3332,

 1.0979, 0.4668,

0.3414

0.4155

347.9728, 0.3321,
0.3407

0.0000, 1.0000,
0.0000

0.0000, 0.0000,
0.0000

56.2951, 0.3484,
0.3501

56.2951, 0.3484,
0.3501

50.0309, 0.3705,
0.3613

63.2048, 0.3293,
0.3393

44.3851, 0.3957,
0.3724

70.7710, 0.3128,
0.3291

39.3397, 0.4240,
0.3828

79.0140, 0.2987,
0.3196

34.8728, 0.4547,
0.3915

87.4503, 0.2908,
0.3185

■ 30.9610, 0.4867,
0.3972

■ 93.7995, 0.2911,
0.3289

■ 27.5789, 0.5179,
0.3986

■ 24.6983, 0.5458,
0.3948

■ 22.2984, 0.5690,
0.3864

Harmonies

Analogous

The Analogous color harmony consists of three colors that are next to each other on the color wheel.



56.2951, 0.3470, 0.3356



56.2951, 0.3484, 0.3501



56.2951, 0.3400, 0.3595

Triad

The Triadic color harmony groups three colors that are evenly spaced from another and form a triangle on the color wheel.



56.2951, 0.3484, 0.3501



56.2951, 0.2897, 0.3378



56.2951, 0.3004, 0.2993

Complementary

The Complementary color scheme is a pair of colors which are on the opposite of each other on the color wheel.



56.2951, 0.3484, 0.3501



56.0091, 0.2814, 0.3069

Split Complementary

Split-complementary colors differ from the complementary color scheme. The scheme consists of three colors, the original color and two neighbors of the complement color.



56.2951, 0.2857, 0.2991



56.2951, 0.3484, 0.3501



56.2951, 0.2797, 0.3208

Square

The Square scheme is like the rectangle color scheme, but the four colors are evenly spaced on the color wheel.



56.2951, 0.3484, 0.3501



56.2951, 0.3059, 0.3527



56.2951, 0.2782, 0.3067



56.2951, 0.3188, 0.3069

Rectangle

The Rectangle color scheme consists of four colors that form a rectangle on the color wheel.



56.2951, 0.3484, 0.3501



56.2951, 0.3301, 0.3614



56.2951, 0.2782, 0.3067



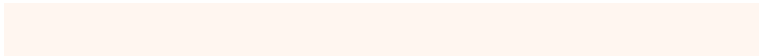
56.2951, 0.2949, 0.2983

Sweetspot

The Sweet Spot groups the original color and five complimentary colors.



56.2976, 0.3484, 0.3501



93.4190, 0.3223, 0.3351



49.9634, 0.3295, 0.2986



19.8466, 0.3235, 0.3358



0.0000, 0.0000, 0.0000



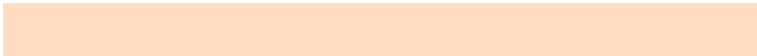
21.4041, 0.3127, 0.3290

Same Dimension

The Same Dimension uses a secret algorithm to generate beautiful new colors.



56.2976, 0.3484, 0.3501



75.7200, 0.3571, 0.3547



66.5522, 0.3437, 0.3741



13.9217, 0.3281, 0.3386



13.4257, 0.5663, 0.3885



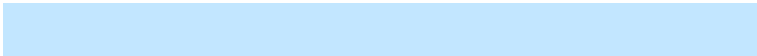
1.0366, 0.5369, 0.4119

Inverse Universe

The Inverse Universe completely reimagines the original color for something new.



56.0091, 0.2814, 0.3069



75.2403, 0.2749, 0.3018



46.6384, 0.2797, 0.2795



13.8900, 0.2982, 0.3192



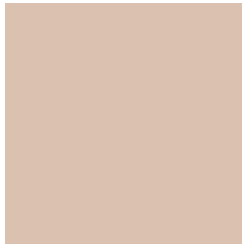
12.6308, 0.1861, 0.1898



0.9862, 0.1930, 0.2148

Previews

White Background



This preview shows how the Yxy color 56.2951, 0.3484, 0.3501 looks on a white background.

Color Contrast Check

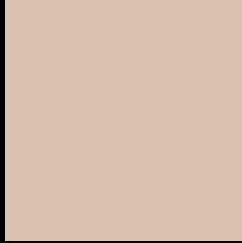
Large Text (above 18pt) WCAG AA × Fail

Any Text WCAG AA × Fail

Large Text (above 18pt) WCAG AAA × Fail

Any Text WCAG AAA × Fail

Black Background



This preview shows how the Yxy color 56.2951, 0.3484, 0.3501 looks on a black background.

Color Contrast Check

Large Text (above 18pt) WCAG AA ✓ Pass

Any Text WCAG AA ✓ Pass

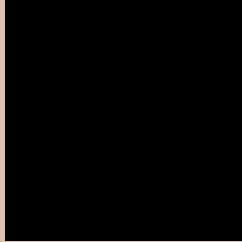
Large Text (above 18pt) WCAG AAA ✓ Pass

Any Text WCAG AAA ✓ Pass

If you want to check with other color combinations, try the [Color Contrast Checker](#).

Yxy 56.2951, 0.3484, 0.3501

Background



This preview shows how black text looks on a background with the Yxy color 56.2951, 0.3484, 0.3501.



This preview shows how white text looks on a background with the Yxy color 56.2951, 0.3484, 0.3501.

Color Blindness Simulation

Color vision deficiency is a very complex topic, and I could not describe the different causes any better than Wikipedia does, so if you want to learn more, you should check out their [article about color blindness](#).

Dichromacy



Original Color

56.2951, 0.3484, 0.3501

Protanopia

56.2286, 0.3351, 0.3531

Deuteranopia

56.3643, 0.3540, 0.3475



Tritanopia

56.4428, 0.3291, 0.3121

Trichromacy



Original Color

56.2951, 0.3484, 0.3501

Protanomaly

56.4633, 0.3402, 0.3529

Deuteranomaly

56.4824, 0.3521, 0.3488

Tritanomaly

56.2068, 0.3370, 0.3256

Monochromacy



Original Color

56.2951, 0.3484, 0.3501

Achromatopsia

57.1125, 0.3127, 0.3290

Achromatomaly

56.7720, 0.3251, 0.3374

CSS Examples

Text

The CSS property to change the color of the text to Yxy 56.2951, 0.3484, 0.3501 is called "color". The color property can be set on classes, ids or directly on the HTML element.

This example shows how text in the color `rgb(219, 193, 175)` looks like.

```
.text, #text, p{  
    color:rgb(219, 193, 175)  
}
```

If you want to add a text shadow in that color use the text-shadow property, you can generate a text shadow directly with our [CSS Text Shadow Generator](#).

Here you see how black text with a 4 pixel rgb(219, 193, 175) colored shadow looks like.

```
.shadow{ text-shadow: 4px 4px 2px rgb(219, 193, 175) }
```

Border

The CSS property to change the border of an element to Yxy 56.2951, 0.3484, 0.3501 is called "border". The border property can be set on classes, ids or directly on the HTML element.

This example shows the color as border, it can be applied via the CSS property "border" or "border-color".

```
.border, #border, table{ border:4px solid rgb(219, 193, 175) }
```

If only the border color should be changed use the property border-color.

```
.border{ border-color:rgb(219, 193, 175) }
```

If you want to add a box shadow in that color use:

Here you see how a box with a 4 pixel rgb(219, 193, 175) colored shadow looks like.

```
.boxshadow{ -moz-box-shadow:4px 4px 4px  
4px rgb(219, 193, 175); -webkit-box-  
shadow:4px 4px 4px 4px rgb(219, 193, 175);  
box-shadow:4px 4px 4px 4px rgb(219, 193,  
175) }
```


Background

The CSS property to change the background color of an element to Yxy 56.2951, 0.3484, 0.3501 is called "background". The background property can be set on classes, ids or directly on the HTML element.

```
.background, #background, body{  
background: rgb(219, 193, 175) }
```

If only the background color should be changed can be used:

```
.background{ background-color: rgb(219,  
193, 175) }
```

This example shows the color as background, it is applied via the CSS property "background".

To optimize and compress your CSS code, you can use our [online CSS compressor and optimizer](#) based on csstidy. If you want to create a linear or radial gradient as background or border, check our [CSS Gradient Generator](#).

Hey! You found this booklet interesting? Support Converting Colors with the new Membership Option!

The pro membership hides all ads, plus gives you double the colors in the color bucket, and more awesome pro features!

[Learn more, Memberships starting at \\$2.50/m!](#)

**Follow me
on Twitter!**

@ConvertingColor