

Converting Colors

Yxy(56.1960, 0.3333, 0.3247)

Have a look what the booklet for
Yxy(56.1960, 0.3333, 0.3247)
contains.

| | |
|---|----|
| Yxy(56.2618, 0.3327, 0.3245) | 3 |
| Conversions | 4 |
| Details | 6 |
| Harmonies | 12 |
| Previews | 24 |
| Color Blindness Simulation | 27 |
| CSS Examples | 30 |

Color

Yxy(56.2618, 0.3327, 0.3245)

Conversions

Conversions Part 1

| Format | Color |
|-------------|---------------------------|
| Hex | DBBFC3 |
| RGB | 219, 191, 195 |
| RGB Percent | 86%, 75%, 76% |
| CMY | 0.1413, 0.2509, 0.2354 |
| CMYK | 0.00, 0.13, 0.11, 0.14 |
| HSL | 352°, 28%, 80% |
| HSV | 352°, 13%, 86% |
| XYZ | 57.6835, 56.2618, 59.4347 |
| YIQ | 199.8280, 15.4040, 7.1800 |

Conversions

Conversions Part 2

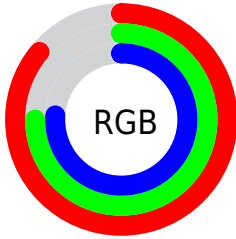
| Format | Color |
|-------------------------------------|-------------------------------|
| R _Y B | 219, 191, 195 |
| Decimal | 14401475 |
| CIE Lab | 79.76, 10.56, 1.66 |
| CIE LCh | 80, 10.685, 8.916 |
| Yxy | 56.2618, 0.3327, 0.3245 |
| Android (android.graphics.Color) | 4292591555 (0xFFDDBBFC3) |
| YUV | 199.8280, -2.3802, 16.8138 |
| Hunter-Lab | 75.0079, 6.0086, 5.5254 |

Details

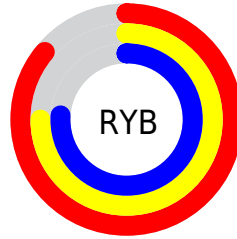
The Yxy color **56.2618, 0.3327, 0.3245** is a light color, and the websafe version is hex **CCCCCC**. A complement of this color would be **66.6287, 0.2958, 0.3336**, and the grayscale version is **57.6537, 0.3127, 0.3290**.

A 20% lighter version of the original color is **94.8098, 0.3149, 0.3242**, and **27.9926, 0.3386, 0.3245** is the 20% darker color. If you saturate the color by 10%, you get **46.6185, 0.3527, 0.3207**, and if you desaturate by 10%, it is **67.4448, 0.3166, 0.3281**.

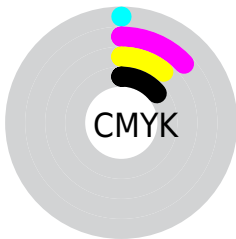
Distribution



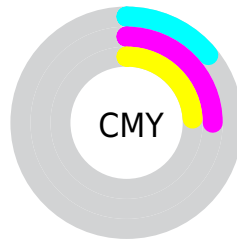
- Red (86%)
- Green (75%)
- Blue (76%)



- Red (86%)
- Yellow (75%)
- Blue (76%)



- Cyan (0%)
- Magenta (13%)
- Yellow (11%)
- Black (14%)





- Cyan (14%)
- Magenta (25%)
- Yellow (24%)

Brightness & Saturation Gradients

These gradients show how the Yxy color 56.2618, 0.3327, 0.3245 changes by changing the brightness by 10 percent. The first figure shows a shift by +10% for each color and the second figure -10%.

Similar to the brightness gradients but the following saturation gradients show a change of the Yxy color 56.2618, 0.3327, 0.3245 by changing the saturation by 10% instead.


 56.2618, 0.3327,
0.3245

 56.2618, 0.3327,
0.3245


410.6774, 0.3230,
0.3267

 40.4129, 0.3350,
0.3240


 99.3873, 0.3292,
0.3253

 27.8606, 0.3380,
0.3232


127.4326, 0.3279,
0.3256

 18.2206, 0.3419,
0.3223


160.3121, 0.3268,
0.3259

 11.1085, 0.3471,
0.3210

198.4103, 0.3258,
0.3261

 6.1398, 0.3547,
0.3192

242.1115, 0.3250,
0.3263

 2.9303, 0.3666,
0.3162

291.8002, 0.3242,

 1.0955, 0.3877,

0.3265

0.3106

347.8607, 0.3236,
0.3266

0.0000, 1.0000,
0.0000

0.0000, 0.0000,
0.0000

56.2618, 0.3327,
0.3245

56.2618, 0.3327,
0.3245

46.6185, 0.3527,
0.3207

67.4448, 0.3166,
0.3281

38.4404, 0.3775,
0.3169

80.2230, 0.3036,
0.3314

31.6579, 0.4077,
0.3132

93.5623, 0.2931,
0.3326

26.1928, 0.4437,
0.3102

93.7941, 0.2911,
0.3289

■ 21.9592, 0.4849,
0.3083

■ 18.8609, 0.5287,
0.3084

■ 16.7877, 0.5707,
0.3111

■ 15.6068, 0.6050,
0.3163

■ 15.1530, 0.6230,
0.3206

Harmonies

Analogous

The Analogous color harmony consists of three colors that are next to each other on the color wheel.



56.2618, 0.3203, 0.3137



56.2618, 0.3327, 0.3245



56.2618, 0.3397, 0.3367

Triad

The Triadic color harmony groups three colors that are evenly spaced from another and form a triangle on the color wheel.



56.2618, 0.3327, 0.3245



56.2618, 0.3189, 0.3524



56.2618, 0.2868, 0.3103

Complementary

The Complementary color scheme is a pair of colors which are on the opposite of each other on the color wheel.



56.2618, 0.3327, 0.3245



66.6287, 0.2958, 0.3336

Split Complementary

Split-complementary colors differ from the complementary color scheme. The scheme consists of three colors, the original color and two neighbors of the complement color.



56.2618, 0.2865, 0.3204



56.2618, 0.3327, 0.3245



56.2618, 0.3048, 0.3451

Square

The Square scheme is like the rectangle color scheme, but the four colors are evenly spaced on the color wheel.



56.2618, 0.3327, 0.3245



56.2618, 0.3316, 0.3531



56.2618, 0.2930, 0.3332



56.2618, 0.2939, 0.3055

Rectangle

The Rectangle color scheme consists of four colors that form a rectangle on the color wheel.



56.2618, 0.3327, 0.3245



56.2618, 0.3403, 0.3440



56.2618, 0.2930, 0.3332



56.2618, 0.2859, 0.3132

Sweetspot

The Sweet Spot groups the original color and five complimentary colors.



56.2643, 0.3327, 0.3245



93.1127, 0.3184, 0.3276



56.7959, 0.3109, 0.2974



19.6615, 0.3196, 0.3274



0.0000, 0.0000, 0.0000



21.4041, 0.3127, 0.3290

Same Dimension

The Same Dimension uses a secret algorithm to generate beautiful new colors.



56.2643, 0.3327, 0.3245



76.0397, 0.3371, 0.3236



60.4971, 0.3344, 0.3403



13.0814, 0.3269, 0.3257



8.9982, 0.6203, 0.3191



0.5928, 0.5817, 0.2978

Inverse Universe

The Inverse Universe completely reimagines the original color for something new.



56.2643, 0.3327, 0.3245



76.0397, 0.3371, 0.3236



61.8822, 0.2930, 0.3175



13.0814, 0.3269, 0.3257



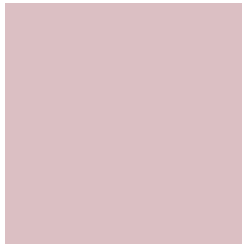
8.9982, 0.6203, 0.3191



0.5928, 0.5817, 0.2978

Previews

White Background



This preview shows how the Yxy color 56.2618, 0.3327, 0.3245 looks on a white background.

Color Contrast Check

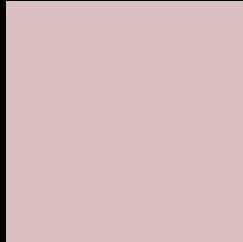
Large Text (above 18pt) WCAG AA × Fail

Any Text WCAG AA × Fail

Large Text (above 18pt) WCAG AAA × Fail

Any Text WCAG AAA × Fail

Black Background



This preview shows how the Yxy color 56.2618, 0.3327, 0.3245 looks on a black background.

Color Contrast Check

Large Text (above 18pt) WCAG AA ✓ Pass

Any Text WCAG AA ✓ Pass

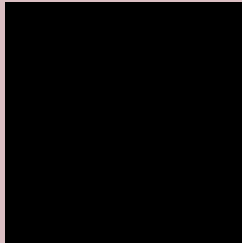
Large Text (above 18pt) WCAG AAA ✓ Pass

Any Text WCAG AAA ✓ Pass

If you want to check with other color combinations, try the [Color Contrast Checker](#).

Yxy 56.2618, 0.3327, 0.3245

Background



This preview shows how black text looks on a background with the Yxy color 56.2618, 0.3327, 0.3245.



This preview shows how white text looks on a background with the Yxy color 56.2618, 0.3327, 0.3245.

Color Blindness Simulation

Color vision deficiency is a very complex topic, and I could not describe the different causes any better than Wikipedia does, so if you want to learn more, you should check out their [article about color blindness](#).

Dichromacy



Original Color

56.2618, 0.3327, 0.3245

Protanopia

56.4272, 0.3151, 0.3278

Deuteranopia

56.1072, 0.3319, 0.3244



Tritanopia

56.4022, 0.3266, 0.3131

Trichromacy



Original Color

56.2618, 0.3327, 0.3245

Protanomaly

56.4713, 0.3217, 0.3267

Deuteranomaly

56.1072, 0.3319, 0.3244

Tritanomaly

56.2596, 0.3289, 0.3165

Monochromacy



Original Color

56.2618, 0.3327, 0.3245

Achromatopsia

57.7580, 0.3127, 0.3290

Achromatomaly

57.2751, 0.3199, 0.3278

CSS Examples

Text

The CSS property to change the color of the text to Yxy 56.2618, 0.3327, 0.3245 is called "color". The color property can be set on classes, ids or directly on the HTML element.

This example shows how text in the color `rgb(219, 191, 195)` looks like.

```
.text, #text, p{  
    color:rgb(219, 191, 195)  
}
```

If you want to add a text shadow in that color use the text-shadow property, you can generate a text shadow directly with our [CSS Text Shadow Generator](#).

Here you see how black text with a 4 pixel rgb(219, 191, 195) colored shadow looks like.

```
.shadow{ text-shadow: 4px 4px 2px rgb(219, 191, 195) }
```

Border

The CSS property to change the border of an element to Yxy 56.2618, 0.3327, 0.3245 is called "border". The border property can be set on classes, ids or directly on the HTML element.

This example shows the color as border, it can be applied via the CSS property "border" or "border-color".

```
.border, #border, table{ border:4px solid rgb(219, 191, 195) }
```

If only the border color should be changed use the property `border-color`.

```
.border{ border-color:rgb(219, 191, 195) }
```

If you want to add a box shadow in that color use:

Here you see how a box with a 4 pixel `rgb(219, 191, 195)` colored shadow looks like.

```
.boxshadow{ -moz-box-shadow:4px 4px 4px  
4px rgb(219, 191, 195); -webkit-box-  
shadow:4px 4px 4px 4px rgb(219, 191, 195);  
box-shadow:4px 4px 4px 4px rgb(219, 191,  
195) }
```


Background

The CSS property to change the background color of an element to Yxy 56.2618, 0.3327, 0.3245 is called "background". The background property can be set on classes, ids or directly on the HTML element.

```
.background, #background, body{  
background: rgb(219, 191, 195) }
```

If only the background color should be changed can be used:

```
.background{ background-color: rgb(219,  
191, 195) }
```

This example shows the color as background, it is applied via the CSS property "background".

To optimize and compress your CSS code, you can use our [online CSS compressor and optimizer](#) based on csstidy. If you want to create a linear or radial gradient as background or border, check our [CSS Gradient Generator](#).

Hey! You found this booklet interesting? Support Converting Colors with the new Membership Option!

The pro membership hides all ads, plus gives you double the colors in the color bucket, and more awesome pro features!

[Learn more, Memberships starting at \\$2.50/m!](#)

**Follow me
on Twitter!**

@ConvertingColor