

Converting Colors

$Y_{xy}(56.2830, 0.3359, 0.3279)$

Have a look what the booklet for
Yxy(56.2830, 0.3359, 0.3279)
contains.

Yxy(56.2830, 0.3359, 0.3279)	3
Conversions	4
Details	6
Harmonies	12
Previews	24
Color Blindness Simulation	27
CSS Examples	30

Color

Yxy(56.2830, 0.3359, 0.3279)

Conversions

Conversions Part 1

Format	Color
Hex	DCBFC0
RGB	220, 191, 192
RGB Percent	86%, 75%, 75%
CMY	0.1374, 0.2509, 0.2470
CMYK	0.00, 0.13, 0.13, 0.14
HSL	358°, 29%, 81%
HSV	358°, 13%, 86%
XYZ	57.6562, 56.2830, 57.7077
YIQ	199.7850, 16.9630, 6.4590

Conversions

Conversions Part 2

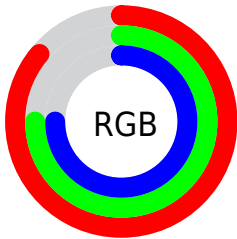
Format	Color
R _Y B	220, 191, 192
Decimal	14467008
CIE Lab	79.77, 10.44, 3.28
CIE LCh	80, 10.939, 17.424
Yxy	56.2830, 0.3359, 0.3279
Android (android.graphics.Color)	4292657088 (0xFFDCBFC0)
YUV	199.7850, -3.8380, 17.7286
Hunter-Lab	75.0220, 5.8930, 6.9089

Details

The Yxy color **56.2830, 0.3359, 0.3279** is a light color, and the websafe version is hex **FFCCCC**. A complement of this color would be **67.3625, 0.2933, 0.3301**, and the grayscale version is **57.6365, 0.3127, 0.3290**.

A 20% lighter version of the original color is **94.5588, 0.3172, 0.3281**, and **28.0404, 0.3419, 0.3276** is the 20% darker color. If you saturate the color by 10%, you get **46.5257, 0.3587, 0.3270**, and if you desaturate by 10%, it is **67.6220, 0.3177, 0.3287**.

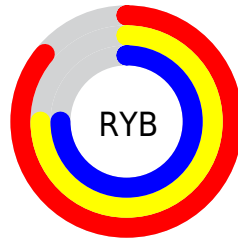
Distribution



Red (86%)

Green (75%)

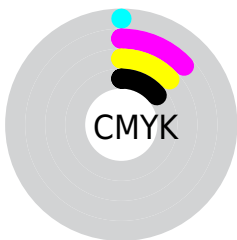
Blue (75%)



Red (86%)

Yellow (75%)

Blue (75%)

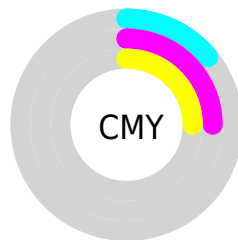


Cyan (0%)

Magenta (13%)

Yellow (13%)

Black (14%)



Cyan (14%)


Magenta (25%)


Yellow (25%)

Brightness & Saturation Gradients


These gradients show how the Yxy color 56.2830, 0.3359, 0.3279 changes by changing the brightness by 10 percent. The first figure shows a shift by +10% for each color and the second figure -10%.


Similar to the brightness gradients but the following saturation gradients show a change of the Yxy color 56.2830, 0.3359, 0.3279 by changing the saturation by 10% instead.


 56.2830, 0.3359,
0.3279

 56.2830, 0.3359,
0.3279


410.7571, 0.3246,
0.3285

 40.4299, 0.3386,
0.3277


 99.4182, 0.3319,
0.3281

 27.8739, 0.3421,
0.3275


127.4691, 0.3303,
0.3282

 18.2306, 0.3466,
0.3272


160.3547, 0.3290,
0.3283

 11.1157, 0.3527,
0.3267

198.4594, 0.3279,
0.3284

 6.1447, 0.3616,
0.3259

242.1676, 0.3269,
0.3284

 2.9333, 0.3754,
0.3245

291.8637, 0.3261,

 1.0970, 0.4001,

0.3285

0.3216

347.9321, 0.3253,
0.3285

0.0000, 1.0000,
0.0000

0.0000, 0.0000,
0.0000

56.2830, 0.3359,
0.3279

56.2830, 0.3359,
0.3279

46.5257, 0.3587,
0.3270

67.6220, 0.3177,
0.3287

38.2726, 0.3870,
0.3261

80.6006, 0.3031,
0.3295

31.4514, 0.4216,
0.3253

93.9514, 0.2917,
0.3289

25.9805, 0.4627,
0.3247

■ 21.7702, 0.5087,
0.3245

■ 18.7200, 0.5557,
0.3249

■ 16.7141, 0.5971,
0.3260

■ 15.6127, 0.6259,
0.3277

■ 15.2282, 0.6371,
0.3283

Harmonies

Analogous

The Analogous color harmony consists of three colors that are next to each other on the color wheel.



56.2830, 0.3244, 0.3162



56.2830, 0.3359, 0.3279



56.2830, 0.3410, 0.3402

Triad

The Triadic color harmony groups three colors that are evenly spaced from another and form a triangle on the color wheel.



56.2830, 0.3359, 0.3279



56.2830, 0.3149, 0.3515



56.2830, 0.2876, 0.3079

Complementary

The Complementary color scheme is a pair of colors which are on the opposite of each other on the color wheel.



56.2830, 0.3359, 0.3279



67.3625, 0.2933, 0.3301

Split Complementary

Split-complementary colors differ from the complementary color scheme. The scheme consists of three colors, the original color and two neighbors of the complement color.



56.2830, 0.2852, 0.3168



56.2830, 0.3359, 0.3279



56.2830, 0.3008, 0.3423

Square

The Square scheme is like the rectangle color scheme, but the four colors are evenly spaced on the color wheel.



56.2830, 0.3359, 0.3279



56.2830, 0.3287, 0.3542



56.2830, 0.2900, 0.3295



56.2830, 0.2966, 0.3047

Rectangle

The Rectangle color scheme consists of four colors that form a rectangle on the color wheel.



56.2830, 0.3359, 0.3279



56.2830, 0.3401, 0.3471



56.2830, 0.2900, 0.3295



56.2830, 0.2860, 0.3103

Sweetspot

The Sweet Spot groups the original color and five complimentary colors.



56.2855, 0.3359, 0.3279



93.0460, 0.3191, 0.3287



57.4196, 0.3131, 0.2966



19.6447, 0.3204, 0.3286



0.0000, 0.0000, 0.0000



21.4041, 0.3127, 0.3290

Same Dimension

The Same Dimension uses a secret algorithm to generate beautiful new colors.



56.2855, 0.3359, 0.3279



74.3930, 0.3421, 0.3276



62.1806, 0.3347, 0.3439



13.0589, 0.3286, 0.3282



8.9432, 0.6361, 0.3278



0.5820, 0.6242, 0.3212

Inverse Universe

The Inverse Universe completely reimagines the original color for something new.



56.2855, 0.3359, 0.3279



74.3930, 0.3421, 0.3276



60.8409, 0.2923, 0.3136



13.0589, 0.3286, 0.3282



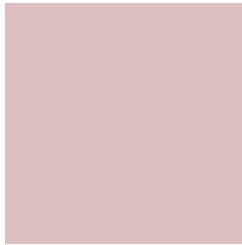
8.9432, 0.6361, 0.3278



0.5820, 0.6242, 0.3212

Previews

White Background



This preview shows how the Yxy color 56.2830, 0.3359, 0.3279 looks on a white background.

Color Contrast Check

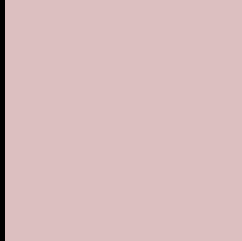
Large Text (above 18pt) WCAG AA × Fail

Any Text WCAG AA × Fail

Large Text (above 18pt) WCAG AAA × Fail

Any Text WCAG AAA × Fail

Black Background



This preview shows how the Yxy color 56.2830, 0.3359, 0.3279 looks on a black background.

Color Contrast Check

Large Text (above 18pt) WCAG AA ✓ Pass

Any Text WCAG AA ✓ Pass

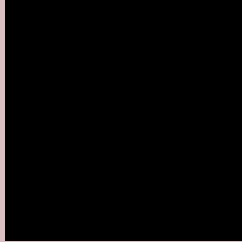
Large Text (above 18pt) WCAG AAA ✓ Pass

Any Text WCAG AAA ✓ Pass

If you want to check with other color combinations, try the [Color Contrast Checker](#).

Yxy 56.2830, 0.3359, 0.3279

Background



This preview shows how black text looks on a background with the Yxy color 56.2830, 0.3359, 0.3279.



This preview shows how white text looks on a background with the Yxy color 56.2830, 0.3359, 0.3279.

Color Blindness Simulation

Color vision deficiency is a very complex topic, and I could not describe the different causes any better than Wikipedia does, so if you want to learn more, you should check out their [article about color blindness](#).

Dichromacy



Original Color

56.2830, 0.3359, 0.3279

Protanopia

56.4292, 0.3182, 0.3314

Deuteranopia

56.1274, 0.3351, 0.3279



Tritanopia

56.2844, 0.3283, 0.3120

Trichromacy



Original Color

56.2830, 0.3359, 0.3279

Protanomaly

56.4806, 0.3248, 0.3302

Deuteranomaly

56.1274, 0.3351, 0.3279

Tritanomaly

56.3692, 0.3305, 0.3176

Monochromacy



Original Color

56.2830, 0.3359, 0.3279

Achromatopsia

57.7580, 0.3127, 0.3290

Achromatomaly

57.2291, 0.3207, 0.3290

CSS Examples

Text

The CSS property to change the color of the text to Yxy 56.2830, 0.3359, 0.3279 is called "color". The color property can be set on classes, ids or directly on the HTML element.

This example shows how text in the color `rgb(220, 191, 192)` looks like.

```
.text, #text, p{  
    color:rgb(220, 191, 192)  
}
```

If you want to add a text shadow in that color use the text-shadow property, you can generate a text shadow directly with our [CSS Text Shadow Generator](#).

Here you see how black text with a 4 pixel rgb(220, 191, 192) colored shadow looks like.

```
.shadow{ text-shadow: 4px 4px 2px rgb(220, 191, 192) }
```

Border

The CSS property to change the border of an element to Yxy 56.2830, 0.3359, 0.3279 is called "border". The border property can be set on classes, ids or directly on the HTML element.

This example shows the color as border, it can be applied via the CSS property "border" or "border-color".

```
.border, #border, table{ border:4px solid rgb(220, 191, 192) }
```

If only the border color should be changed use the property `border-color`.

```
.border{ border-color:rgb(220, 191, 192) }
```

If you want to add a box shadow in that color use:

Here you see how a box with a 4 pixel `rgb(220, 191, 192)` colored shadow looks like.

```
.boxshadow{ -moz-box-shadow:4px 4px 4px  
4px rgb(220, 191, 192); -webkit-box-  
shadow:4px 4px 4px 4px rgb(220, 191, 192);  
box-shadow:4px 4px 4px 4px rgb(220, 191,  
192) }
```


Background

The CSS property to change the background color of an element to Yxy 56.2830, 0.3359, 0.3279 is called "background". The background property can be set on classes, ids or directly on the HTML element.

```
.background, #background, body{  
background: rgb(220, 191, 192) }
```

If only the background color should be changed can be used:

```
.background{ background-color: rgb(220,  
191, 192) }
```

This example shows the color as background, it is applied via the CSS property "background".

To optimize and compress your CSS code, you can use our [online CSS compressor and optimizer](#) based on csstidy. If you want to create a linear or radial gradient as background or border, check our [CSS Gradient Generator](#).

Hey! You found this booklet interesting? Support Converting Colors with the new Membership Option!

The pro membership hides all ads, plus gives you double the colors in the color bucket, and more awesome pro features!

[Learn more, Memberships starting at \\$2.50/m!](#)

**Follow me
on Twitter!**

@ConvertingColor