

Converting Colors

Yxy(56.3517, 0.3295, 0.3264)

Have a look what the booklet for
Yxy(56.3517, 0.3295, 0.3264)
contains.

| | |
|--|----|
| Yxy(56.5271, 0.3291, 0.3267) | 3 |
| <i>Conversions</i> | 4 |
| <i>Details</i> | 6 |
| <i>Harmonies</i> | 12 |
| <i>Previews</i> | 24 |
| <i>Color Blindness Simulation</i> | 27 |
| <i>CSS Examples</i> | 30 |

Color

Yxy(56.5271, 0.3291, 0.3267)

Conversions

Conversions Part 1

| Format | Color |
|-------------|---------------------------|
| Hex | D7C1C3 |
| RGB | 215, 193, 195 |
| RGB Percent | 84%, 76%, 76% |
| CMY | 0.1569, 0.2431, 0.2352 |
| CMYK | 0.00, 0.10, 0.09, 0.16 |
| HSL | 354°, 22%, 80% |
| HSV | 354°, 10%, 84% |
| XYZ | 56.9424, 56.5271, 59.5550 |
| YIQ | 199.8060, 12.4700, 5.2860 |

Conversions

Conversions Part 2

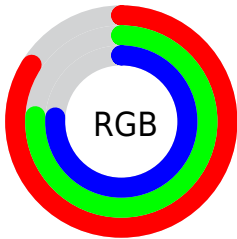
| Format | Color |
|-------------------------------------|-------------------------------|
| R _Y B | 215, 193, 195 |
| Decimal | 14139843 |
| CIE Lab | 79.91, 8.09, 1.80 |
| CIE LCh | 80, 8.286, 12.581 |
| Yxy | 56.5271, 0.3291, 0.3267 |
| Android (android.graphics.Color) | 4292329923 (0xFFD7C1C3) |
| YUV | 199.8060, -2.3694, 13.3251 |
| Hunter-Lab | 75.1845, 3.6173, 5.6645 |

Details

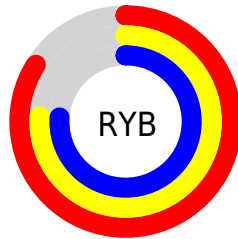
The Yxy color $56.5271, 0.3291, 0.3267$ is a light color, and the websafe version is hex `CCCCCC`. A complement of this color would be $64.7314, 0.2984, 0.3313$, and the grayscale version is $57.6433, 0.3127, 0.3290$.

A 20% lighter version of the original color is $96.0396, 0.3148, 0.3261$, and $27.8619, 0.3339, 0.3260$ is the 20% darker color. If you saturate the color by 10%, you get $46.8785, 0.3491, 0.3243$, and if you desaturate by 10%, it is $67.6777, 0.3130, 0.3290$.

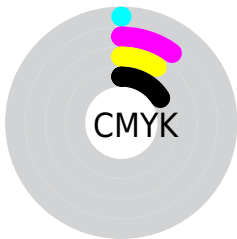
Distribution



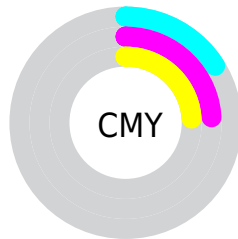
- Red (84%)
- Green (76%)
- Blue (76%)



- Red (84%)
- Yellow (76%)
- Blue (76%)



- Cyan (0%)
- Magenta (10%)
- Yellow (9%)
- Black (16%)





- Cyan (16%)
- Magenta (24%)
- Yellow (24%)

Brightness & Saturation Gradients


These gradients show how the Yxy color 56.5271, 0.3291, 0.3267 changes by changing the brightness by 10 percent. The first figure shows a shift by +10% for each color and the second figure -10%.

Similar to the brightness gradients but the following saturation gradients show a change of the Yxy color 56.5271, 0.3291, 0.3267 by changing the saturation by 10% instead.

 56.5271, 0.3291,
0.3267

 56.5271, 0.3291,
0.3267

411.6749, 0.3212,
0.3279

 40.6257, 0.3310,
0.3264


 99.7748, 0.3263,
0.3271

 28.0267, 0.3334,
0.3260

127.8899, 0.3252,
0.3273

 18.3458, 0.3366,
0.3255


160.8451, 0.3243,
0.3274

 11.1985, 0.3409,
0.3249

199.0246, 0.3235,
0.3275

 6.2005, 0.3471,
0.3238

242.8130, 0.3228,
0.3276

 2.9674, 0.3568,
0.3222

292.5946, 0.3222,

 1.1147, 0.3740,

0.3277

0.3190

348.7537, 0.3216,
0.3278

0.0000, 1.0000,
0.0000

0.0000, 0.0000,
0.0000

56.5271, 0.3291,
0.3267

56.5271, 0.3291,
0.3267

46.8785, 0.3491,
0.3243

67.6777, 0.3130,
0.3290

38.6607, 0.3740,
0.3218

80.3829, 0.3001,
0.3310

31.8079, 0.4046,
0.3195

93.0940, 0.2896,
0.3304

26.2459, 0.4413,
0.3174

93.1840, 0.2888,
0.3289

■ 21.8939, 0.4835,
0.3162

■ 18.6617, 0.5290,
0.3161

■ 16.4466, 0.5727,
0.3178

■ 15.1267, 0.6084,
0.3212

■ 14.4936, 0.6310,
0.3250

Harmonies

Analogous

The Analogous color harmony consists of three colors that are next to each other on the color wheel.



56.5271, 0.3199, 0.3180



56.5271, 0.3291, 0.3267



56.5271, 0.3338, 0.3361

Triad

The Triadic color harmony groups three colors that are evenly spaced from another and form a triangle on the color wheel.



56.5271, 0.3291, 0.3267



56.5271, 0.3162, 0.3466



56.5271, 0.2930, 0.3139

Complementary

The Complementary color scheme is a pair of colors which are on the opposite of each other on the color wheel.



56.5271, 0.3291, 0.3267



64.7314, 0.2984, 0.3313

Split Complementary

Split-complementary colors differ from the complementary color scheme. The scheme consists of three colors, the original color and two neighbors of the complement color.



56.5271, 0.2921, 0.3213



56.5271, 0.3291, 0.3267



56.5271, 0.3053, 0.3404

Square

The Square scheme is like the rectangle color scheme, but the four colors are evenly spaced on the color wheel.



56.5271, 0.3291, 0.3267



56.5271, 0.3263, 0.3478



56.5271, 0.2966, 0.3311



56.5271, 0.2991, 0.3106

Rectangle

The Rectangle color scheme consists of four colors that form a rectangle on the color wheel.



56.5271, 0.3291, 0.3267



56.5271, 0.3338, 0.3417



56.5271, 0.2966, 0.3311



56.5271, 0.2921, 0.3159

Sweetspot

The Sweet Spot groups the original color and five complimentary colors.



56.5296, 0.3291, 0.3267



94.7764, 0.3172, 0.3283



57.1631, 0.3122, 0.3039



19.9948, 0.3184, 0.3282



0.0000, 0.0000, 0.0000



21.4041, 0.3127, 0.3290

Same Dimension

The Same Dimension uses a secret algorithm to generate beautiful new colors.



56.5296, 0.3291, 0.3267



80.3443, 0.3326, 0.3263



60.4409, 0.3295, 0.3392



12.4391, 0.3277, 0.3269



8.6776, 0.6289, 0.3238



0.5299, 0.5988, 0.3072

Inverse Universe

The Inverse Universe completely reimagines the original color for something new.



56.5296, 0.3291, 0.3267



80.3443, 0.3326, 0.3263



60.4790, 0.2970, 0.3186



12.4391, 0.3277, 0.3269



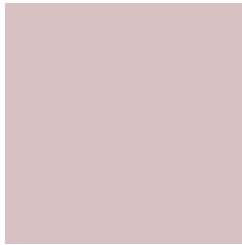
8.6776, 0.6289, 0.3238



0.5299, 0.5988, 0.3072

Previews

White Background



This preview shows how the Yxy color 56.5271, 0.3291, 0.3267 looks on a white background.

Color Contrast Check

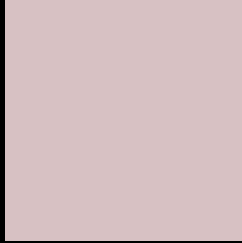
Large Text (above 18pt) WCAG AA × Fail

Any Text WCAG AA × Fail

Large Text (above 18pt) WCAG AAA × Fail

Any Text WCAG AAA × Fail

Black Background



This preview shows how the Yxy color 56.5271, 0.3291, 0.3267 looks on a black background.

Color Contrast Check

Large Text (above 18pt) WCAG AA ✓ Pass

Any Text WCAG AA ✓ Pass

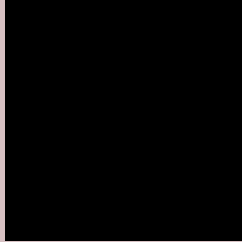
Large Text (above 18pt) WCAG AAA ✓ Pass

Any Text WCAG AAA ✓ Pass

If you want to check with other color combinations, try the [Color Contrast Checker](#).

Yxy 56.5271, 0.3291, 0.3267

Background



This preview shows how black text looks on a background with the Yxy color 56.5271, 0.3291, 0.3267.



This preview shows how white text looks on a background with the Yxy color 56.5271, 0.3291, 0.3267.

Color Blindness Simulation

Color vision deficiency is a very complex topic, and I could not describe the different causes any better than Wikipedia does, so if you want to learn more, you should check out their [article about color blindness](#).

Dichromacy



Original Color

56.5271, 0.3291, 0.3267

Protanopia

56.5203, 0.3167, 0.3290

Deuteranopia

56.5448, 0.3317, 0.3256



Tritanopia

56.4695, 0.3225, 0.3119

Trichromacy



Original Color

56.5271, 0.3291, 0.3267

Protanomaly

56.7308, 0.3215, 0.3290

Deuteranomaly

56.3911, 0.3309, 0.3256

Tritanomaly

56.5625, 0.3246, 0.3175

Monochromacy



Original Color

56.5271, 0.3291, 0.3267

Achromatopsia

57.7580, 0.3127, 0.3290

Achromatomaly

56.9889, 0.3183, 0.3278

CSS Examples

Text

The CSS property to change the color of the text to Yxy 56.5271, 0.3291, 0.3267 is called "color". The color property can be set on classes, ids or directly on the HTML element.

This example shows how text in the color `rgb(215, 193, 195)` looks like.

```
.text, #text, p{  
    color:rgb(215, 193, 195)  
}
```

If you want to add a text shadow in that color use the text-shadow property, you can generate a text shadow directly with our [CSS Text Shadow Generator](#).

Here you see how black text with a 4 pixel rgb(215, 193, 195) colored shadow looks like.

```
.shadow{ text-shadow: 4px 4px 2px rgb(215, 193, 195) }
```

Border

The CSS property to change the border of an element to Yxy 56.5271, 0.3291, 0.3267 is called "border". The border property can be set on classes, ids or directly on the HTML element.

This example shows the color as border, it can be applied via the CSS property "border" or "border-color".

```
.border, #border, table{ border:4px solid rgb(215, 193, 195) }
```

If only the border color should be changed use the property `border-color`.

```
.border{ border-color:rgb(215, 193, 195) }
```

If you want to add a box shadow in that color use:

Here you see how a box with a 4 pixel `rgb(215, 193, 195)` colored shadow looks like.

```
.boxshadow{ -moz-box-shadow:4px 4px 4px  
4px rgb(215, 193, 195); -webkit-box-  
shadow:4px 4px 4px 4px rgb(215, 193, 195);  
box-shadow:4px 4px 4px 4px rgb(215, 193,  
195) }
```


Background

The CSS property to change the background color of an element to Yxy 56.5271, 0.3291, 0.3267 is called "background". The background property can be set on classes, ids or directly on the HTML element.

```
.background, #background, body{  
background: rgb(215, 193, 195) }
```

If only the background color should be changed can be used:

```
.background{ background-color: rgb(215,  
193, 195) }
```

This example shows the color as background, it is applied via the CSS property "background".

To optimize and compress your CSS code, you can use our [online CSS compressor and optimizer](#) based on csstidy. If you want to create a linear or radial gradient as background or border, check our [CSS Gradient Generator](#).

Hey! You found this booklet interesting? Support Converting Colors with the new Membership Option!

The pro membership hides all ads, plus gives you double the colors in the color bucket, and more awesome pro features!

[Learn more, Memberships starting at \\$2.50/m!](#)

**Follow me
on Twitter!**

@ConvertingColor