

Converting Colors

$Yxy(56.3754, 0.3277, 0.3221)$

Have a look what the booklet for
Yxy(56.3754, 0.3277, 0.3221)
contains.

Yxy(56.3754, 0.3277, 0.3221)	3
Conversions	4
Details	6
Harmonies	12
Previews	24
Color Blindness Simulation	27
CSS Examples	30

Color

Yxy(56.3754, 0.3277, 0.3221)

Conversions

Conversions Part 1

Format	Color
Hex	D8C0C6
RGB	216, 192, 198
RGB Percent	85%, 75%, 78%
CMY	0.1531, 0.2470, 0.2235
CMYK	0.00, 0.11, 0.08, 0.15
HSL	345°, 23%, 80%
HSV	345°, 11%, 85%
XYZ	57.3555, 56.3754, 61.2936
YIQ	199.8600, 12.3780, 6.9540

Conversions

Conversions Part 2

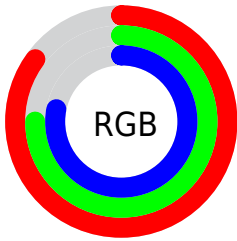
Format	Color
R _Y B	216, 192, 198
Decimal	14205126
CIE Lab	79.83, 9.47, 0.08
CIE LCh	80, 9.475, 0.487
Yxy	56.3754, 0.3277, 0.3221
Android (android.graphics.Color)	4292395206 (0xFFD8C0C6)
YUV	199.8600, -0.9170, 14.1548
Hunter-Lab	75.0836, 4.9581, 4.1578

Details

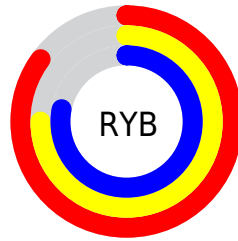
The Yxy color $56.3754, 0.3277, 0.3221$ is a light color, and the websafe version is hex `CCCCCC`. A complement of this color would be $64.9549, 0.2996, 0.3360$, and the grayscale version is $57.6680, 0.3127, 0.3290$.

A 20% lighter version of the original color is $95.6148, 0.3130, 0.3223$, and $28.0559, 0.3318, 0.3214$ is the 20% darker color. If you saturate the color by 10%, you get $46.8710, 0.3445, 0.3155$, and if you desaturate by 10%, it is $67.3563, 0.3140, 0.3283$.

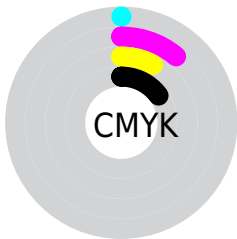
Distribution



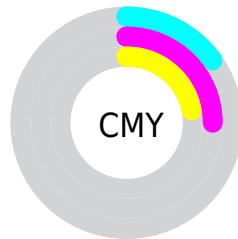
- Red (85%)
- Green (75%)
- Blue (78%)



- Red (85%)
- Yellow (75%)
- Blue (78%)



- Cyan (0%)
- Magenta (11%)
- Yellow (8%)
- Black (15%)





- Cyan (15%)
- Magenta (25%)
- Yellow (22%)

Brightness & Saturation Gradients

These gradients show how the Yxy color 56.3754, 0.3277, 0.3221 changes by changing the brightness by 10 percent. The first figure shows a shift by +10% for each color and the second figure -10%.


Similar to the brightness gradients but the following saturation gradients show a change of the Yxy color 56.3754, 0.3277, 0.3221 by changing the saturation by 10% instead.


 56.3754, 0.3277,
0.3221

 56.3754, 0.3277,
0.3221

411.1047, 0.3204,
0.3255

 40.5040, 0.3294,
0.3213


 99.5532, 0.3251,
0.3233

 27.9317, 0.3317,
0.3203


127.6285, 0.3241,
0.3238

 18.2742, 0.3345,
0.3189


160.5404, 0.3233,
0.3241

 11.1470, 0.3384,
0.3171

198.6734, 0.3226,
0.3245

 6.1658, 0.3441,
0.3145

242.4120, 0.3219,
0.3248

 2.9462, 0.3528,
0.3105

292.1405, 0.3214,

 1.1037, 0.3683,

0.3250

348.2432, 0.3209,
0.3253

0.3033

0.0000, 1.0000,
0.0000

0.0000, 0.0000,
0.0000

56.3754, 0.3277,
0.3221

56.3754, 0.3277,
0.3221

46.8710, 0.3445,
0.3155

67.3563, 0.3140,
0.3283

38.7726, 0.3652,
0.3086

79.8652, 0.3030,
0.3341

32.0155, 0.3904,
0.3020

92.8031, 0.2939,
0.3376

26.5266, 0.4204,
0.2960

93.3339, 0.2894,
0.3289

■ 22.2259, 0.4551,
0.2915

■ 19.0243, 0.4933,
0.2897

■ 16.8200, 0.5324,
0.2915

■ 15.4917, 0.5685,
0.2975

■ 14.8613, 0.5952,
0.3053

Harmonies

Analogous

The Analogous color harmony consists of three colors that are next to each other on the color wheel.



56.3754, 0.3159, 0.3133



56.3754, 0.3277, 0.3221



56.3754, 0.3355, 0.3328

Triad

The Triadic color harmony groups three colors that are evenly spaced from another and form a triangle on the color wheel.



56.3754, 0.3277, 0.3221



56.3754, 0.3217, 0.3505



56.3754, 0.2890, 0.3146

Complementary

The Complementary color scheme is a pair of colors which are on the opposite of each other on the color wheel.



56.3754, 0.3277, 0.3221



64.9549, 0.2996, 0.3360

Split Complementary

Split-complementary colors differ from the complementary color scheme. The scheme consists of three colors, the original color and two neighbors of the complement color.



56.3754, 0.2905, 0.3245



56.3754, 0.3277, 0.3221



56.3754, 0.3092, 0.3456

Square

The Square scheme is like the rectangle color scheme, but the four colors are evenly spaced on the color wheel.



56.3754, 0.3277, 0.3221



56.3754, 0.3319, 0.3494



56.3754, 0.2978, 0.3359



56.3754, 0.2937, 0.3088

Rectangle

The Rectangle color scheme consists of four colors that form a rectangle on the color wheel.



56.3754, 0.3277, 0.3221



56.3754, 0.3373, 0.3398



56.3754, 0.2978, 0.3359



56.3754, 0.2888, 0.3175

Sweetspot

The Sweet Spot groups the original color and five complimentary colors.



56.3779, 0.3277, 0.3221



94.8520, 0.3165, 0.3272



56.3022, 0.3089, 0.3014



20.0151, 0.3175, 0.3267



0.0000, 0.0000, 0.0000



21.4041, 0.3127, 0.3290

Same Dimension

The Same Dimension uses a secret algorithm to generate beautiful new colors.



56.3779, 0.3277, 0.3221



79.1448, 0.3308, 0.3208



58.6078, 0.3316, 0.3355



12.4713, 0.3252, 0.3232



8.8141, 0.5915, 0.3032



0.5450, 0.5416, 0.2757

Inverse Universe

The Inverse Universe completely reimagines the original color for something new.



56.3779, 0.3277, 0.3221



79.1448, 0.3308, 0.3208



62.4449, 0.2957, 0.3224



12.4713, 0.3252, 0.3232



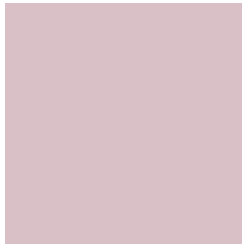
8.8141, 0.5915, 0.3032



0.5450, 0.5416, 0.2757

Previews

White Background



This preview shows how the Yxy color 56.3754, 0.3277, 0.3221 looks on a white background.

Color Contrast Check

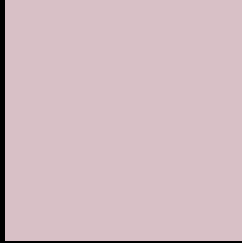
Large Text (above 18pt) WCAG AA × Fail

Any Text WCAG AA × Fail

Large Text (above 18pt) WCAG AAA × Fail

Any Text WCAG AAA × Fail

Black Background



This preview shows how the Yxy color 56.3754, 0.3277, 0.3221 looks on a black background.

Color Contrast Check

Large Text (above 18pt) WCAG AA ✓ Pass

Any Text WCAG AA ✓ Pass

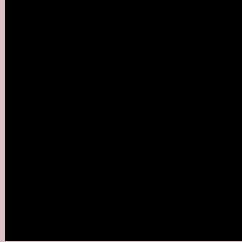
Large Text (above 18pt) WCAG AAA ✓ Pass

Any Text WCAG AAA ✓ Pass

If you want to check with other color combinations, try the [Color Contrast Checker](#).

Yxy 56.3754, 0.3277, 0.3221

Background



This preview shows how black text looks on a background with the Yxy color 56.3754, 0.3277, 0.3221.



This preview shows how white text looks on a background with the Yxy color 56.3754, 0.3277, 0.3221.

Color Blindness Simulation

Color vision deficiency is a very complex topic, and I could not describe the different causes any better than Wikipedia does, so if you want to learn more, you should check out their [article about color blindness](#).

Dichromacy



Original Color

56.3754, 0.3277, 0.3221

Protanopia

56.5671, 0.3129, 0.3242

Deuteranopia

56.5282, 0.3286, 0.3221



Tritanopia

56.4695, 0.3225, 0.3119

Trichromacy



Original Color

56.3754, 0.3277, 0.3221

Protanomaly

56.3222, 0.3178, 0.3231

Deuteranomaly

56.5282, 0.3286, 0.3221

Tritanomaly

56.3251, 0.3248, 0.3153

Monochromacy



Original Color

56.3754, 0.3277, 0.3221

Achromatopsia

57.7580, 0.3127, 0.3290

Achromatomaly

57.1778, 0.3184, 0.3267

CSS Examples

Text

The CSS property to change the color of the text to Yxy 56.3754, 0.3277, 0.3221 is called "color". The color property can be set on classes, ids or directly on the HTML element.

This example shows how text in the color `rgb(216, 192, 198)` looks like.

```
.text, #text, p{  
    color:rgb(216, 192, 198)  
}
```

If you want to add a text shadow in that color use the text-shadow property, you can generate a text shadow directly with our [CSS Text Shadow Generator](#).

Here you see how black text with a 4 pixel rgb(216, 192, 198) colored shadow looks like.

```
.shadow{ text-shadow: 4px 4px 2px rgb(216, 192, 198) }
```

Border

The CSS property to change the border of an element to Yxy 56.3754, 0.3277, 0.3221 is called "border". The border property can be set on classes, ids or directly on the HTML element.

This example shows the color as border, it can be applied via the CSS property "border" or "border-color".

```
.border, #border, table{ border:4px solid rgb(216, 192, 198) }
```

If only the border color should be changed use the property border-color.

```
.border{ border-color:rgb(216, 192, 198) }
```

If you want to add a box shadow in that color use:

Here you see how a box with a 4 pixel rgb(216, 192, 198) colored shadow looks like.

```
.boxshadow{ -moz-box-shadow:4px 4px 4px  
4px rgb(216, 192, 198); -webkit-box-  
shadow:4px 4px 4px 4px rgb(216, 192, 198);  
box-shadow:4px 4px 4px 4px rgb(216, 192,  
198) }
```


Background

The CSS property to change the background color of an element to Yxy 56.3754, 0.3277, 0.3221 is called "background". The background property can be set on classes, ids or directly on the HTML element.

```
.background, #background, body{  
background: rgb(216, 192, 198) }
```

If only the background color should be changed can be used:

```
.background{ background-color: rgb(216,  
192, 198) }
```

This example shows the color as background, it is applied via the CSS property "background".

To optimize and compress your CSS code, you can use our [online CSS compressor and optimizer](#) based on csstidy. If you want to create a linear or radial gradient as background or border, check our [CSS Gradient Generator](#).

Hey! You found this booklet interesting? Support Converting Colors with the new Membership Option!

The pro membership hides all ads, plus gives you double the colors in the color bucket, and more awesome pro features!

[Learn more, Memberships starting at \\$2.50/m!](#)

**Follow me
on Twitter!**

@ConvertingColor