

Converting Colors

$Y_{xy}(56.6075, 0.3578, 0.3427)$

Have a look what the booklet for
Yxy(56.6075, 0.3578, 0.3427)
contains.

Yxy(56.5584, 0.3580, 0.3427)	3
Conversions	4
Details	6
Harmonies	12
Previews	24
Color Blindness Simulation	27
CSS Examples	30

Color

Yxy(56.5584, 0.3580, 0.3427)

Conversions

Conversions Part 1

Format	Color
Hex	E7BDB1
RGB	231, 189, 177
RGB Percent	91%, 74%, 69%
CMY	0.0942, 0.2588, 0.3059
CMYK	0.00, 0.18, 0.23, 0.09
HSL	13°, 53%, 80%
HSV	13°, 23%, 91%
XYZ	59.0835, 56.5584, 49.3958
YIQ	200.1900, 28.8840, 5.1720

Conversions

Conversions Part 2

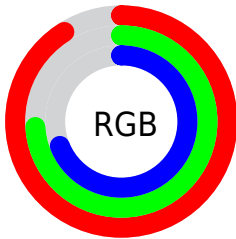
Format	Color
R _Y B	231, 192, 177
Decimal	15187377
CIE Lab	79.93, 13.23, 11.72
CIE LCh	80, 17.675, 41.542
Yxy	56.5584, 0.3580, 0.3427
Android (android.graphics.Color)	4293377457 (0xFFE7BDB1)
YUV	200.1900, -11.4327, 27.0204
Hunter-Lab	75.2053, 8.6255, 13.7013

Details

The Yxy color **56.5584, 0.3580, 0.3427** is a light color, and the websafe version is hex **FFCCCC**. A complement of this color would be **65.7603, 0.2771, 0.3148**, and the grayscale version is **57.9409, 0.3127, 0.3290**.

A 20% lighter version of the original color is **92.4480, 0.3266, 0.3407**, and **28.1775, 0.3709, 0.3469** is the 20% darker color. If you saturate the color by 10%, you get **48.4627, 0.3841, 0.3490**, and if you desaturate by 10%, it is **65.7717, 0.3362, 0.3366**.

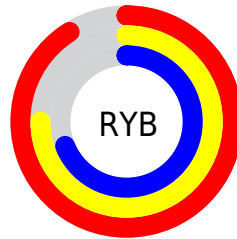
Distribution



Red (91%)

Green (74%)

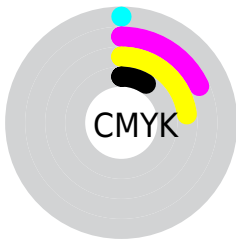
Blue (69%)



Red (91%)

Yellow (75%)

Blue (69%)

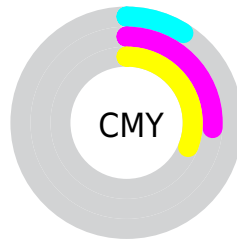


Cyan (0%)

Magenta (18%)

Yellow (23%)

Black (9%)



Cyan (9%)


Magenta (26%)


Yellow (31%)

Brightness & Saturation Gradients


These gradients show how the Yxy color 56.5584, 0.3580, 0.3427 changes by changing the brightness by 10 percent. The first figure shows a shift by +10% for each color and the second figure -10%.


Similar to the brightness gradients but the following saturation gradients show a change of the Yxy color 56.5584, 0.3580, 0.3427 by changing the saturation by 10% instead.


 56.5584, 0.3580,
0.3427

 56.5584, 0.3580,
0.3427


411.7925, 0.3359,
0.3365

 40.6508, 0.3633,
0.3441


 99.8205, 0.3501,
0.3406

 28.0463, 0.3701,
0.3458


127.9439, 0.3471,
0.3397

 18.3606, 0.3789,
0.3478


160.9079, 0.3445,
0.3390

 11.2092, 0.3909,
0.3504

199.0971, 0.3423,
0.3384

 6.2077, 0.4082,
0.3537

242.8957, 0.3404,
0.3378

 2.9718, 0.4347,
0.3577

292.6882, 0.3387,

 1.1170, 0.4984,

0.3373

0.3749

348.8590, 0.3372,
0.3369

0.0000, 1.0000,
0.0000

0.0000, 0.0000,
0.0000

56.5584, 0.3580,
0.3427

56.5584, 0.3580,
0.3427

48.4627, 0.3841,
0.3490

65.7717, 0.3362,
0.3366

41.4342, 0.4150,
0.3550

76.1350, 0.3181,
0.3308

35.4300, 0.4506,
0.3602

87.6894, 0.3031,
0.3255

30.4014, 0.4900,
0.3637

95.7258, 0.2981,
0.3290

■ 26.2954, 0.5308,
0.3646

■ 23.0538, 0.5691,
0.3617

■ 20.6112, 0.6000,
0.3551

■ 19.3897, 0.6155,
0.3495

Harmonies

Analogous

The Analogous color harmony consists of three colors that are next to each other on the color wheel.



56.5584, 0.3473, 0.3231



56.5584, 0.3580, 0.3427



56.5584, 0.3560, 0.3597

Triad

The Triadic color harmony groups three colors that are evenly spaced from another and form a triangle on the color wheel.



56.5584, 0.3580, 0.3427



56.5584, 0.2975, 0.3544



56.5584, 0.2832, 0.2904

Complementary

The Complementary color scheme is a pair of colors which are on the opposite of each other on the color wheel.



56.5584, 0.3580, 0.3427



65.7603, 0.2771, 0.3148

Split Complementary

Split-complementary colors differ from the complementary color scheme. The scheme consists of three colors, the original color and two neighbors of the complement color.



56.5584, 0.2710, 0.2970



56.5584, 0.3580, 0.3427



56.5584, 0.2790, 0.3338

Square

The Square scheme is like the rectangle color scheme, but the four colors are evenly spaced on the color wheel.



56.5584, 0.3580, 0.3427



56.5584, 0.3206, 0.3677



56.5584, 0.2695, 0.3126



56.5584, 0.3035, 0.2937

Rectangle

The Rectangle color scheme consists of four colors that form a rectangle on the color wheel.



56.5584, 0.3580, 0.3427



56.5584, 0.3478, 0.3672



56.5584, 0.2695, 0.3126



56.5584, 0.2781, 0.2915

Sweetspot

The Sweet Spot groups the original color and five complimentary colors.



56.5610, 0.3580, 0.3427



90.3667, 0.3243, 0.3329



53.5586, 0.3247, 0.2828



19.1718, 0.3254, 0.3333



0.0000, 0.0000, 0.0000



21.4041, 0.3127, 0.3290

Same Dimension

The Same Dimension uses a secret algorithm to generate beautiful new colors.



56.5610, 0.3580, 0.3427



65.7778, 0.3699, 0.3457



69.1110, 0.3515, 0.3716



14.8856, 0.3287, 0.3343



11.0237, 0.6130, 0.3515



0.9513, 0.5850, 0.3737

Inverse Universe

The Inverse Universe completely reimagines the original color for something new.



65.7603, 0.2771, 0.3148



79.1570, 0.2701, 0.3116



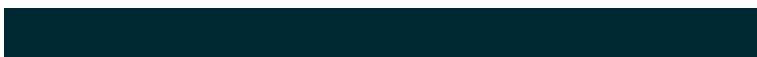
52.9433, 0.2745, 0.2824



15.7635, 0.2981, 0.3236



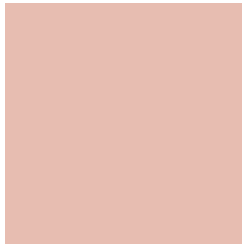
21.6329, 0.2044, 0.2558



1.7330, 0.2077, 0.2677

Previews

White Background



This preview shows how the Yxy color 56.5584, 0.3580, 0.3427 looks on a white background.

Color Contrast Check

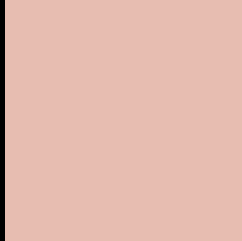
Large Text (above 18pt) WCAG AA × Fail

Any Text WCAG AA × Fail

Large Text (above 18pt) WCAG AAA × Fail

Any Text WCAG AAA × Fail

Black Background



This preview shows how the Yxy color 56.5584, 0.3580, 0.3427 looks on a black background.

Color Contrast Check

Large Text (above 18pt) WCAG AA ✓ Pass

Any Text WCAG AA ✓ Pass

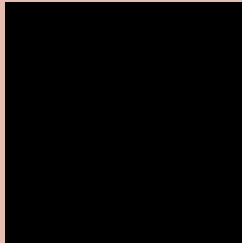
Large Text (above 18pt) WCAG AAA ✓ Pass

Any Text WCAG AAA ✓ Pass

If you want to check with other color combinations, try the [Color Contrast Checker](#).

Yxy 56.5584, 0.3580, 0.3427

Background



This preview shows how black text looks on a background with the Yxy color 56.5584, 0.3580, 0.3427.



This preview shows how white text looks on a background with the Yxy color 56.5584, 0.3580, 0.3427.

Color Blindness Simulation

Color vision deficiency is a very complex topic, and I could not describe the different causes any better than Wikipedia does, so if you want to learn more, you should check out their [article about color blindness](#).

Dichromacy



Original Color

56.5584, 0.3580, 0.3427

Protanopia

56.8874, 0.3311, 0.3482

Deuteranopia

56.6047, 0.3532, 0.3451



Tritanopia

56.7804, 0.3420, 0.3136

Trichromacy



Original Color

56.5584, 0.3580, 0.3427

Protanomaly

56.7726, 0.3406, 0.3467

Deuteranomaly

56.4952, 0.3552, 0.3439

Tritanomaly

56.6701, 0.3476, 0.3235

Monochromacy



Original Color

56.5584, 0.3580, 0.3427

Achromatopsia

57.7580, 0.3127, 0.3290

Achromatomaly

57.1345, 0.3278, 0.3337

CSS Examples

Text

The CSS property to change the color of the text to Yxy 56.5584, 0.3580, 0.3427 is called "color". The color property can be set on classes, ids or directly on the HTML element.

This example shows how text in the color `rgb(231, 189, 177)` looks like.

```
.text, #text, p{  
    color:rgb(231, 189, 177)  
}
```

If you want to add a text shadow in that color use the text-shadow property, you can generate a text shadow directly with our [CSS Text Shadow Generator](#).

Here you see how black text with a 4 pixel rgb(231, 189, 177) colored shadow looks like.

```
.shadow{ text-shadow: 4px 4px 2px rgb(231, 189, 177) }
```

Border

The CSS property to change the border of an element to Yxy 56.5584, 0.3580, 0.3427 is called "border". The border property can be set on classes, ids or directly on the HTML element.

This example shows the color as border, it can be applied via the CSS property "border" or "border-color".

```
.border, #border, table{ border:4px solid rgb(231, 189, 177) }
```

If only the border color should be changed use the property border-color.

```
.border{ border-color:rgb(231, 189, 177) }
```

If you want to add a box shadow in that color use:

Here you see how a box with a 4 pixel rgb(231, 189, 177) colored shadow looks like.

```
.boxshadow{ -moz-box-shadow:4px 4px 4px  
4px rgb(231, 189, 177); -webkit-box-  
shadow:4px 4px 4px 4px rgb(231, 189, 177);  
box-shadow:4px 4px 4px 4px rgb(231, 189,  
177) }
```


Background

The CSS property to change the background color of an element to Yxy 56.5584, 0.3580, 0.3427 is called "background". The background property can be set on classes, ids or directly on the HTML element.

```
.background, #background, body{  
background: rgb(231, 189, 177) }
```

If only the background color should be changed can be used:

```
.background{ background-color: rgb(231,  
189, 177) }
```

This example shows the color as background, it is applied via the CSS property "background".

To optimize and compress your CSS code, you can use our [online CSS compressor and optimizer](#) based on csstidy. If you want to create a linear or radial gradient as background or border, check our [CSS Gradient Generator](#).

Hey! You found this booklet interesting? Support Converting Colors with the new Membership Option!

The pro membership hides all ads, plus gives you double the colors in the color bucket, and more awesome pro features!

[Learn more, Memberships starting at \\$2.50/m!](#)

**Follow me
on Twitter!**

@ConvertingColor