

Converting Colors

Yxy(56.6813, 0.3324, 0.3421)

Have a look what the booklet for
Yxy(56.6813, 0.3324, 0.3421)
contains.

Yxy(56.6843, 0.3324, 0.3421)	3
<i>Conversions</i>	4
<i>Details</i>	6
<i>Harmonies</i>	12
<i>Previews</i>	24
<i>Color Blindness Simulation</i>	27
<i>CSS Examples</i>	30

Color

Yxy(56.6843, 0.3324, 0.3421)

Conversions

Conversions Part 1

Format	Color
Hex	D2C4B9
RGB	210, 196, 185
RGB Percent	82%, 77%, 73%
CMY	0.1764, 0.2314, 0.2745
CMYK	0.00, 0.07, 0.12, 0.18
HSL	26°, 22%, 77%
HSV	26°, 12%, 82%
XYZ	55.0771, 56.6843, 53.9338
YIQ	198.9320, 11.8750, -0.4530

Conversions

Conversions Part 2

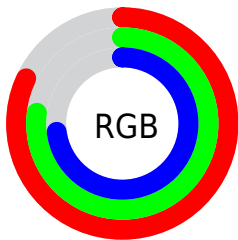
Format	Color
R _Y B	210, 205, 185
Decimal	13812921
CIE Lab	80.00, 3.05, 7.28
CIE LCh	80, 7.889, 67.251
Yxy	56.6843, 0.3324, 0.3421
Android (android.graphics.Color)	4292003001 (0xFFD2C4B9)
YUV	198.9320, -6.8685, 9.7066
Hunter-Lab	75.2890, -1.1754, 10.2295

Details

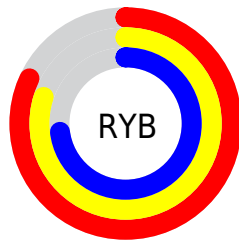
The Yxy color **56.6843, 0.3324, 0.3421** is a light color, and the websafe version is hex **CCCCCC**. A complement of this color would be **55.8166, 0.2943, 0.3155**, and the grayscale version is **57.1088, 0.3127, 0.3290**.

A 20% lighter version of the original color is **97.8614, 0.3210, 0.3406**, and **27.9805, 0.3372, 0.3449** is the 20% darker color. If you saturate the color by 10%, you get **50.7648, 0.3517, 0.3538**, and if you desaturate by 10%, it is **63.1558, 0.3156, 0.3310**.

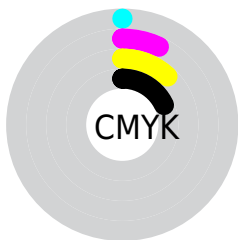
Distribution



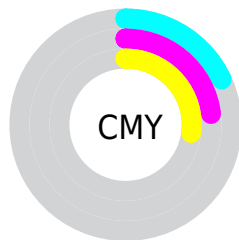
- Red (82%)
- Green (77%)
- Blue (73%)



- Red (82%)
- Yellow (80%)
- Blue (73%)



- Cyan (0%)
- Magenta (7%)
- Yellow (12%)
- Black (18%)



- Cyan (18%)
- Magenta (23%)
- Yellow (27%)

Brightness & Saturation Gradients

These gradients show how the Yxy color 56.6843, 0.3324, 0.3421 changes by changing the brightness by 10 percent. The first figure shows a shift by +10% for each color and the second figure -10%.

Similar to the brightness gradients but the following saturation gradients show a change of the Yxy color 56.6843, 0.3324, 0.3421 by changing the saturation by 10% instead.

■ 56.6843, 0.3324,
0.3421

■ 56.6843, 0.3324,
0.3421

412.2653, 0.3228,
0.3358

■ 40.7518, 0.3347,
0.3436

■ 100.0044, 0.3290,
0.3399

■ 28.1252, 0.3376,
0.3455

128.1608, 0.3277,
0.3390

■ 18.4201, 0.3414,
0.3479

161.1607, 0.3266,
0.3383

■ 11.2520, 0.3466,
0.3512

199.3883, 0.3256,
0.3377

■ 6.2366, 0.3540,
0.3558

243.2283, 0.3248,
0.3371

■ 2.9895, 0.3655,
0.3627

293.0648, 0.3241,

■ 1.1262, 0.3889,

0.3366

0.3775

349.2823, 0.3234,
0.3362

0.0002, 0.9975,
0.0025

0.0000, 0.0000,
0.0000

56.6843, 0.3324,
0.3421

56.6843, 0.3324,
0.3421

50.7648, 0.3517,
0.3538

63.1558, 0.3156,
0.3310

45.3745, 0.3739,
0.3658

70.1863, 0.3012,
0.3207

40.5000, 0.3989,
0.3776

77.7923, 0.2887,
0.3112

36.1244, 0.4266,
0.3885

85.0523, 0.2854,
0.3165

■ 32.2298, 0.4563,
0.3975

■ 92.3205, 0.2860,
0.3287

■ 28.7969, 0.4867,
0.4032

■ 92.4434, 0.2860,
0.3289

■ 25.8047, 0.5159,
0.4045

■ 23.2297, 0.5417,
0.4004

■ 21.4275, 0.5596,
0.3939

Harmonies

Analogous

The Analogous color harmony consists of three colors that are next to each other on the color wheel.



56.6843, 0.3324, 0.3343



56.6843, 0.3324, 0.3421



56.6843, 0.3271, 0.3466

Triad

The Triadic color harmony groups three colors that are evenly spaced from another and form a triangle on the color wheel.



56.6843, 0.3324, 0.3421



56.6843, 0.2986, 0.3327



56.6843, 0.3073, 0.3124

Complementary

The Complementary color scheme is a pair of colors which are on the opposite of each other on the color wheel.



56.6843, 0.3324, 0.3421



55.8166, 0.2943, 0.3155

Split Complementary

Split-complementary colors differ from the complementary color scheme. The scheme consists of three colors, the original color and two neighbors of the complement color.



56.6843, 0.2984, 0.3117



56.6843, 0.3324, 0.3421



56.6843, 0.2935, 0.3232

Square

The Square scheme is like the rectangle color scheme, but the four colors are evenly spaced on the color wheel.



56.6843, 0.3324, 0.3421



56.6843, 0.3075, 0.3412



56.6843, 0.2934, 0.3156



56.6843, 0.3178, 0.3173

Rectangle

The Rectangle color scheme consists of four colors that form a rectangle on the color wheel.



56.6843, 0.3324, 0.3421



56.6843, 0.3212, 0.3470



56.6843, 0.2934, 0.3156



56.6843, 0.3040, 0.3116

Sweetspot

The Sweet Spot groups the original color and five complimentary colors.



56.6868, 0.3324, 0.3421



95.7698, 0.3190, 0.3333



52.5308, 0.3226, 0.3123



20.3318, 0.3202, 0.3342



0.0000, 0.0000, 0.0000



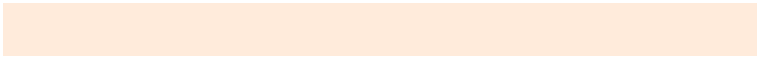
21.4041, 0.3127, 0.3290

Same Dimension

The Same Dimension uses a secret algorithm to generate beautiful new colors.



56.6868, 0.3324, 0.3421



85.8112, 0.3365, 0.3447



62.4857, 0.3306, 0.3563



12.6519, 0.3280, 0.3393



13.2619, 0.5571, 0.3958



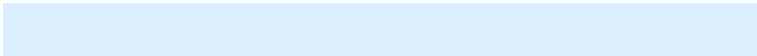
0.8984, 0.5256, 0.4208

Inverse Universe

The Inverse Universe completely reimagines the original color for something new.



55.8166, 0.2943, 0.3155



84.2311, 0.2908, 0.3128



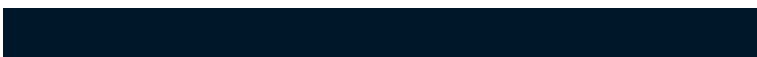
50.3652, 0.2940, 0.3001



12.5001, 0.2983, 0.3185



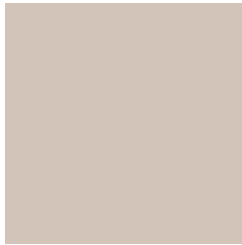
10.8884, 0.1832, 0.1793



0.7655, 0.1915, 0.2094

Previews

White Background



This preview shows how the Yxy color 56.6843, 0.3324, 0.3421 looks on a white background.

Color Contrast Check

Large Text (above 18pt) WCAG AA × Fail

Any Text WCAG AA × Fail

Large Text (above 18pt) WCAG AAA × Fail

Any Text WCAG AAA × Fail

Black Background



This preview shows how the Yxy color 56.6843, 0.3324, 0.3421 looks on a black background.

Color Contrast Check

Large Text (above 18pt) WCAG AA ✓ Pass

Any Text WCAG AA ✓ Pass

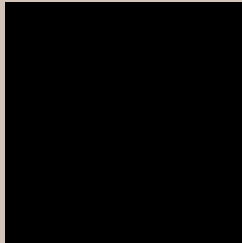
Large Text (above 18pt) WCAG AAA ✓ Pass

Any Text WCAG AAA ✓ Pass

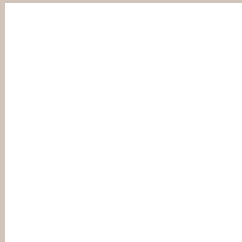
If you want to check with other color combinations, try the [Color Contrast Checker](#).

Yxy 56.6843, 0.3324, 0.3421

Background



This preview shows how black text looks on a background with the Yxy color 56.6843, 0.3324, 0.3421.



This preview shows how white text looks on a background with the Yxy color 56.6843, 0.3324, 0.3421.

Color Blindness Simulation

Color vision deficiency is a very complex topic, and I could not describe the different causes any better than Wikipedia does, so if you want to learn more, you should check out their [article about color blindness](#).

Dichromacy



Original Color

56.6843, 0.3324, 0.3421

Protanopia

56.9125, 0.3272, 0.3434

Deuteranopia

56.7740, 0.3423, 0.3360



Tritanopia

56.8401, 0.3175, 0.3117

Trichromacy



Original Color

56.6843, 0.3324, 0.3421

Protanomaly

56.7431, 0.3290, 0.3422

Deuteranomaly

56.5905, 0.3387, 0.3372

Tritanomaly

56.7508, 0.3227, 0.3220

Monochromacy



Original Color

56.6843, 0.3324, 0.3421

Achromatopsia

57.1125, 0.3127, 0.3290

Achromatomaly

56.9797, 0.3196, 0.3338

CSS Examples

Text

The CSS property to change the color of the text to Yxy 56.6843, 0.3324, 0.3421 is called "color". The color property can be set on classes, ids or directly on the HTML element.

This example shows how text in the color `rgb(210, 196, 185)` looks like.

```
.text, #text, p{  
    color:rgb(210, 196, 185)  
}
```

If you want to add a text shadow in that color use the text-shadow property, you can generate a text shadow directly with our [CSS Text Shadow Generator](#).

Here you see how black text with a 4 pixel rgb(210, 196, 185) colored shadow looks like.

```
.shadow{ text-shadow: 4px 4px 2px rgb(210, 196, 185) }
```

Border

The CSS property to change the border of an element to Yxy 56.6843, 0.3324, 0.3421 is called "border". The border property can be set on classes, ids or directly on the HTML element.

This example shows the color as border, it can be applied via the CSS property "border" or "border-color".

```
.border, #border, table{ border:4px solid rgb(210, 196, 185) }
```

If only the border color should be changed use the property `border-color`.

```
.border{ border-color:rgb(210, 196, 185) }
```

If you want to add a box shadow in that color use:

Here you see how a box with a 4 pixel `rgb(210, 196, 185)` colored shadow looks like.

```
.boxshadow{ -moz-box-shadow:4px 4px 4px  
4px rgb(210, 196, 185); -webkit-box-  
shadow:4px 4px 4px 4px rgb(210, 196, 185);  
box-shadow:4px 4px 4px 4px rgb(210, 196,  
185) }
```


Background

The CSS property to change the background color of an element to Yxy 56.6843, 0.3324, 0.3421 is called "background". The background property can be set on classes, ids or directly on the HTML element.

```
.background, #background, body{  
background: rgb(210, 196, 185) }
```

If only the background color should be changed can be used:

```
.background{ background-color: rgb(210,  
196, 185) }
```

This example shows the color as background, it is applied via the CSS property "background".

To optimize and compress your CSS code, you can use our [online CSS compressor and optimizer](#) based on csstidy. If you want to create a linear or radial gradient as background or border, check our [CSS Gradient Generator](#).

Hey! You found this booklet interesting? Support Converting Colors with the new Membership Option!

The pro membership hides all ads, plus gives you double the colors in the color bucket, and more awesome pro features!

[Learn more, Memberships starting at \\$2.50/m!](#)

**Follow me
on Twitter!**

@ConvertingColor