

Converting Colors

Yxy(56.8160, 0.3392, 0.3359)

Have a look what the booklet for
Yxy(56.8160, 0.3392, 0.3359)
contains.

Yxy(56.7879, 0.3388, 0.3360)	3
Conversions	4
Details	6
Harmonies	12
Previews	24
Color Blindness Simulation	27
CSS Examples	30

Color

Yxy(56.7879, 0.3388, 0.3360)

Conversions

Conversions Part 1

Format	Color
Hex	DBC1BB
RGB	219, 193, 187
RGB Percent	86%, 76%, 73%
CMY	0.1410, 0.2432, 0.2666
CMYK	0.00, 0.12, 0.15, 0.14
HSL	11°, 31%, 80%
HSV	11°, 15%, 86%
XYZ	57.2611, 56.7879, 54.9626
YIQ	200.0900, 17.4220, 3.6460

Conversions

Conversions Part 2

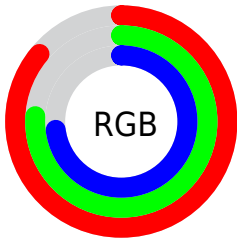
Format	Color
R_{YB}	219, 194, 187
Decimal	14401979
CIE _{Lab}	80.06, 8.24, 6.38
CIE _{LCh}	80, 10.417, 37.741
Yxy	56.7879, 0.3388, 0.3360
Android (android.graphics.Color)	4292592059 (0xFFDBC1BB)
YUV	200.0900, -6.4534, 16.5841
Hunter-Lab	75.3577, 3.7585, 9.5069

Details

The Yxy color **56.7879, 0.3388, 0.3360** is a light color, and the websafe version is hex **CCCCCC**. A complement of this color would be **63.2969, 0.2903, 0.3219**, and the grayscale version is **57.8534, 0.3127, 0.3290**.

A 20% lighter version of the original color is **95.4824, 0.3201, 0.3348**, and **28.0790, 0.3460, 0.3368** is the 20% darker color. If you saturate the color by 10%, you get **48.5163, 0.3614, 0.3412**, and if you desaturate by 10%, it is **66.1561, 0.3202, 0.3311**.

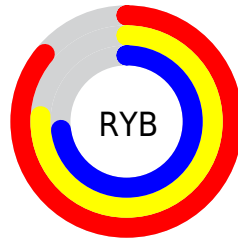
Distribution



Red (86%)

Green (76%)

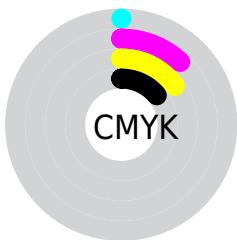
Blue (73%)



Red (86%)

Yellow (76%)

Blue (73%)

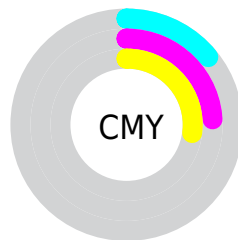


Cyan (0%)

Magenta (12%)

Yellow (15%)

Black (14%)



Cyan (14%)


Magenta (24%)

Yellow (27%)

Brightness & Saturation Gradients


These gradients show how the Yxy color 56.7879, 0.3388, 0.3360 changes by changing the brightness by 10 percent. The first figure shows a shift by +10% for each color and the second figure -10%.

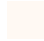
Similar to the brightness gradients but the following saturation gradients show a change of the Yxy color 56.7879, 0.3388, 0.3360 by changing the saturation by 10% instead.


 56.7879, 0.3388,
0.3360

 56.7879, 0.3388,
0.3360


412.6541, 0.3261,
0.3328

 40.8350, 0.3419,
0.3367

 100.1556, 0.3343,
0.3349

 28.1902, 0.3457,
0.3377


128.3392, 0.3325,
0.3344

 18.4691, 0.3508,
0.3388


161.3685, 0.3311,
0.3341

 11.2873, 0.3577,
0.3403

199.6279, 0.3298,
0.3337

 6.2604, 0.3676,
0.3424

243.5018, 0.3287,
0.3334

 3.0041, 0.3831,
0.3452

293.3745, 0.3277,

 1.1339, 0.4121,

0.3332

0.3507

349.6304, 0.3269,
0.3330

0.0067, 0.9689,
0.0311

0.0000, 0.0000,
0.0000

56.7879, 0.3388,
0.3360

56.7879, 0.3388,
0.3360

48.5163, 0.3614,
0.3412

66.1561, 0.3202,
0.3311

41.2937, 0.3885,
0.3464

76.6512, 0.3048,
0.3266

35.0802, 0.4208,
0.3514

88.3119, 0.2921,
0.3225

29.8304, 0.4580,
0.3556

93.8052, 0.2912,
0.3289

■ 25.4954, 0.4991,
0.3582

■ 22.0219, 0.5411,
0.3582

■ 19.3508, 0.5797,
0.3550

■ 17.4153, 0.6095,
0.3486

■ 16.6452, 0.6215,
0.3447

Harmonies

Analogous

The Analogous color harmony consists of three colors that are next to each other on the color wheel.



56.7879, 0.3317, 0.3242



56.7879, 0.3388, 0.3360



56.7879, 0.3387, 0.3463

Triad

The Triadic color harmony groups three colors that are evenly spaced from another and form a triangle on the color wheel.



56.7879, 0.3388, 0.3360



56.7879, 0.3055, 0.3450



56.7879, 0.2940, 0.3062

Complementary

The Complementary color scheme is a pair of colors which are on the opposite of each other on the color wheel.



56.7879, 0.3388, 0.3360



63.2969, 0.2903, 0.3219

Split Complementary

Split-complementary colors differ from the complementary color scheme. The scheme consists of three colors, the original color and two neighbors of the complement color.



56.7879, 0.2874, 0.3112



56.7879, 0.3388, 0.3360



56.7879, 0.2939, 0.3336

Square

The Square scheme is like the rectangle color scheme, but the four colors are evenly spaced on the color wheel.



56.7879, 0.3388, 0.3360



56.7879, 0.3193, 0.3519



56.7879, 0.2873, 0.3211



56.7879, 0.3057, 0.3073

Rectangle

The Rectangle color scheme consists of four colors that form a rectangle on the color wheel.



56.7879, 0.3388, 0.3360



56.7879, 0.3346, 0.3509



56.7879, 0.2873, 0.3211



56.7879, 0.2911, 0.3072

Sweetspot

The Sweet Spot groups the original color and five complimentary colors.



56.7904, 0.3388, 0.3360



94.1818, 0.3192, 0.3309



55.4231, 0.3189, 0.2994



19.9308, 0.3205, 0.3312



0.0000, 0.0000, 0.0000



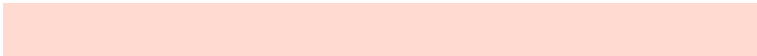
21.4041, 0.3127, 0.3290

Same Dimension

The Same Dimension uses a secret algorithm to generate beautiful new colors.



56.7904, 0.3388, 0.3360



75.8423, 0.3463, 0.3378



64.2020, 0.3362, 0.3540



13.4431, 0.3287, 0.3334



9.9841, 0.6193, 0.3464



0.7646, 0.5889, 0.3706

Inverse Universe

The Inverse Universe completely reimagines the original color for something new.



63.2969, 0.2903, 0.3219



86.9609, 0.2851, 0.3200



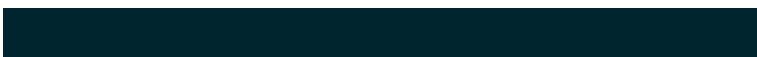
55.6839, 0.2897, 0.3027



14.3944, 0.2982, 0.3245



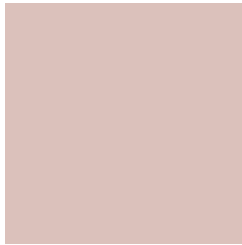
22.0851, 0.2079, 0.2684



1.5400, 0.2109, 0.2793

Previews

White Background



This preview shows how the Yxy color 56.7879, 0.3388, 0.3360 looks on a white background.

Color Contrast Check

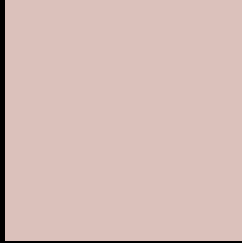
Large Text (above 18pt) WCAG AA × Fail

Any Text WCAG AA × Fail

Large Text (above 18pt) WCAG AAA × Fail

Any Text WCAG AAA × Fail

Black Background



This preview shows how the Yxy color 56.7879, 0.3388, 0.3360 looks on a black background.

Color Contrast Check

Large Text (above 18pt) WCAG AA ✓ Pass

Any Text WCAG AA ✓ Pass

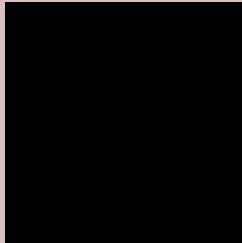
Large Text (above 18pt) WCAG AAA ✓ Pass

Any Text WCAG AAA ✓ Pass

If you want to check with other color combinations, try the [Color Contrast Checker](#).

Yxy 56.7879, 0.3388, 0.3360

Background



This preview shows how black text looks on a background with the Yxy color 56.7879, 0.3388, 0.3360.



This preview shows how white text looks on a background with the Yxy color 56.7879, 0.3388, 0.3360.

Color Blindness Simulation

Color vision deficiency is a very complex topic, and I could not describe the different causes any better than Wikipedia does, so if you want to learn more, you should check out their [article about color blindness](#).

Dichromacy



Original Color

56.7879, 0.3388, 0.3360

Protanopia

56.9432, 0.3234, 0.3386

Deuteranopia

56.8167, 0.3415, 0.3348



Tritanopia

56.6068, 0.3266, 0.3120

Trichromacy



Original Color

56.7879, 0.3388, 0.3360

Protanomaly

56.7093, 0.3285, 0.3373

Deuteranomaly

56.6593, 0.3406, 0.3348

Tritanomaly

56.5545, 0.3312, 0.3210

Monochromacy



Original Color

56.7879, 0.3388, 0.3360

Achromatopsia

57.7580, 0.3127, 0.3290

Achromatomaly

57.1380, 0.3222, 0.3314

CSS Examples

Text

The CSS property to change the color of the text to Yxy 56.7879, 0.3388, 0.3360 is called "color". The color property can be set on classes, ids or directly on the HTML element.

This example shows how text in the color `rgb(219, 193, 187)` looks like.

```
.text, #text, p{  
    color:rgb(219, 193, 187)  
}
```

If you want to add a text shadow in that color use the text-shadow property, you can generate a text shadow directly with our [CSS Text Shadow Generator](#).

Here you see how black text with a 4 pixel rgb(219, 193, 187) colored shadow looks like.

```
.shadow{ text-shadow: 4px 4px 2px rgb(219, 193, 187) }
```

Border

The CSS property to change the border of an element to Yxy 56.7879, 0.3388, 0.3360 is called "border". The border property can be set on classes, ids or directly on the HTML element.

This example shows the color as border, it can be applied via the CSS property "border" or "border-color".

```
.border, #border, table{ border:4px solid rgb(219, 193, 187) }
```

If only the border color should be changed use the property `border-color`.

```
.border{ border-color:rgb(219, 193, 187) }
```

If you want to add a box shadow in that color use:

Here you see how a box with a 4 pixel `rgb(219, 193, 187)` colored shadow looks like.

```
.boxshadow{ -moz-box-shadow:4px 4px 4px  
4px rgb(219, 193, 187); -webkit-box-  
shadow:4px 4px 4px 4px rgb(219, 193, 187);  
box-shadow:4px 4px 4px 4px rgb(219, 193,  
187) }
```


Background

The CSS property to change the background color of an element to Yxy 56.7879, 0.3388, 0.3360 is called "background". The background property can be set on classes, ids or directly on the HTML element.

```
.background, #background, body{  
background: rgb(219, 193, 187) }
```

If only the background color should be changed can be used:

```
.background{ background-color: rgb(219,  
193, 187) }
```

This example shows the color as background, it is applied via the CSS property "background".

To optimize and compress your CSS code, you can use our [online CSS compressor and optimizer](#) based on csstidy. If you want to create a linear or radial gradient as background or border, check our [CSS Gradient Generator](#).

Hey! You found this booklet interesting? Support Converting Colors with the new Membership Option!

The pro membership hides all ads, plus gives you double the colors in the color bucket, and more awesome pro features!

[Learn more, Memberships starting at \\$2.50/m!](#)

**Follow me
on Twitter!**

@ConvertingColor