

Converting Colors

Yxy(56.8419, 0.3488, 0.3429)

Have a look what the booklet for
Yxy(56.8419, 0.3488, 0.3429)
contains.

Yxy(56.8419, 0.3488, 0.3429)	3
Conversions	4
Details	6
Harmonies	12
Previews	24
Color Blindness Simulation	27
CSS Examples	30

Color

Yxy(56.8419, 0.3488, 0.3429)

Conversions

Conversions Part 1

Format	Color
Hex	E0C0B4
RGB	224, 192, 180
RGB Percent	88%, 75%, 71%
CMY	0.1217, 0.2470, 0.2941
CMYK	0.00, 0.14, 0.20, 0.12
HSL	16°, 41%, 79%
HSV	16°, 20%, 88%
XYZ	57.8199, 56.8419, 51.1063
YIQ	200.2000, 22.9240, 3.0520

Conversions

Conversions Part 2

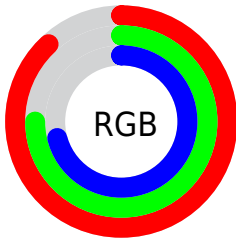
Format	Color
R_{YB}	224, 197, 180
Decimal	14729396
CIE _{Lab}	80.09, 9.48, 10.24
CIE _{LCh}	80, 13.954, 47.231
Yxy	56.8419, 0.3488, 0.3429
Android (android.graphics.Color)	4292919476 (0xFFE0C0B4)
YUV	200.2000, -9.9586, 20.8726
Hunter-Lab	75.3936, 4.9543, 12.5851

Details

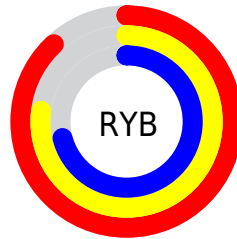
The Yxy color **56.8419, 0.3488, 0.3429** is a light color, and the websafe version is hex **FFCCCC**. A complement of this color would be **62.1452, 0.2826, 0.3147**, and the grayscale version is **57.9400, 0.3127, 0.3290**.

A 20% lighter version of the original color is **94.4509, 0.3244, 0.3407**, and **28.3224, 0.3583, 0.3473** is the 20% darker color. If you saturate the color by 10%, you get **49.2468, 0.3725, 0.3505**, and if you desaturate by 10%, it is **65.3801, 0.3289, 0.3356**.

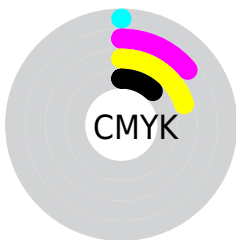
Distribution



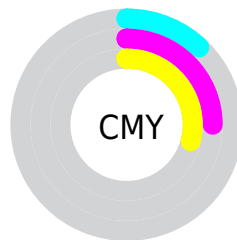
- Red (88%)
- Green (75%)
- Blue (71%)



- Red (88%)
- Yellow (77%)
- Blue (71%)



- Cyan (0%)
- Magenta (14%)
- Yellow (20%)
- Black (12%)





- Cyan (12%)
- Magenta (25%)
- Yellow (29%)

Brightness & Saturation Gradients


These gradients show how the Yxy color 56.8419, 0.3488, 0.3429 changes by changing the brightness by 10 percent. The first figure shows a shift by +10% for each color and the second figure -10%.

Similar to the brightness gradients but the following saturation gradients show a change of the Yxy color 56.8419, 0.3488, 0.3429 by changing the saturation by 10% instead.


 56.8419, 0.3488,
0.3429

 56.8419, 0.3488,
0.3429


412.8566, 0.3312,
0.3364

 40.8783, 0.3530,
0.3444

 100.2345, 0.3425,
0.3407

 28.2240, 0.3584,
0.3462


128.4322, 0.3401,
0.3398

 18.4946, 0.3654,
0.3485

161.4769, 0.3381,
0.3390

 11.3057, 0.3749,
0.3515

199.7527, 0.3363,
0.3384

 6.2728, 0.3886,
0.3555

243.6443, 0.3348,
0.3378

 3.0117, 0.4098,
0.3610

293.5358, 0.3335,

 1.1378, 0.4570,

0.3373

349.8118, 0.3323,
0.3368

0.3772

0.0100, 0.9600,
0.0400

0.0000, 0.0000,
0.0000

56.8419, 0.3488,
0.3429

56.8419, 0.3488,
0.3429

49.2468, 0.3725,
0.3505

65.3801, 0.3289,
0.3356

42.5543, 0.4005,
0.3580

74.8846, 0.3121,
0.3288

36.7324, 0.4327,
0.3650

85.3876, 0.2982,
0.3224

31.7442, 0.4688,
0.3704

94.5813, 0.2940,
0.3289

■ 27.5500, 0.5071,
0.3734

■ 24.1065, 0.5448,
0.3726

■ 21.3660, 0.5780,
0.3674

■ 19.2685, 0.6037,
0.3585

■ 19.2012, 0.6046,
0.3582

Harmonies

Analogous

The Analogous color harmony consists of three colors that are next to each other on the color wheel.



56.8419, 0.3422, 0.3274



56.8419, 0.3488, 0.3429



56.8419, 0.3454, 0.3554

Triad

The Triadic color harmony groups three colors that are evenly spaced from another and form a triangle on the color wheel.



56.8419, 0.3488, 0.3429



56.8419, 0.2976, 0.3461



56.8419, 0.2921, 0.2983

Complementary

The Complementary color scheme is a pair of colors which are on the opposite of each other on the color wheel.



56.8419, 0.3488, 0.3429



62.1452, 0.2826, 0.3147

Split Complementary

Split-complementary colors differ from the complementary color scheme. The scheme consists of three colors, the original color and two neighbors of the complement color.



56.8419, 0.2809, 0.3022



56.8419, 0.3488, 0.3429



56.8419, 0.2840, 0.3296

Square

The Square scheme is like the rectangle color scheme, but the four colors are evenly spaced on the color wheel.



56.8419, 0.3488, 0.3429



56.8419, 0.3155, 0.3579



56.8419, 0.2779, 0.3135



56.8419, 0.3091, 0.3022

Rectangle

The Rectangle color scheme consists of four colors that form a rectangle on the color wheel.



56.8419, 0.3488, 0.3429



56.8419, 0.3380, 0.3602



56.8419, 0.2779, 0.3135



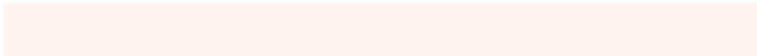
56.8419, 0.2875, 0.2987

Sweetspot

The Sweet Spot groups the original color and five complimentary colors.



56.8445, 0.3488, 0.3429



92.1635, 0.3225, 0.3331



53.2517, 0.3243, 0.2929



19.5504, 0.3237, 0.3335



0.0000, 0.0000, 0.0000



21.4041, 0.3127, 0.3290

Same Dimension

The Same Dimension uses a secret algorithm to generate beautiful new colors.



56.8445, 0.3488, 0.3429



71.4995, 0.3591, 0.3463



67.0812, 0.3442, 0.3669



14.3071, 0.3285, 0.3355



11.3453, 0.6019, 0.3603



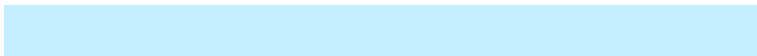
0.9334, 0.5714, 0.3845

Inverse Universe

The Inverse Universe completely reimagines the original color for something new.



62.1452, 0.2826, 0.3147



79.9716, 0.2757, 0.3110



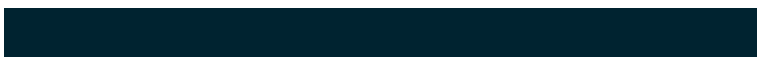
52.0243, 0.2809, 0.2880



14.9057, 0.2982, 0.3224



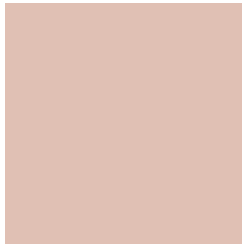
18.5351, 0.1995, 0.2380



1.4315, 0.2038, 0.2537

Previews

White Background



This preview shows how the Yxy color 56.8419, 0.3488, 0.3429 looks on a white background.

Color Contrast Check

Large Text (above 18pt) WCAG AA × Fail

Any Text WCAG AA × Fail

Large Text (above 18pt) WCAG AAA × Fail

Any Text WCAG AAA × Fail

Black Background



This preview shows how the Yxy color 56.8419, 0.3488, 0.3429 looks on a black background.

Color Contrast Check

Large Text (above 18pt) WCAG AA ✓ Pass

Any Text WCAG AA ✓ Pass

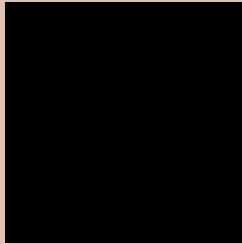
Large Text (above 18pt) WCAG AAA ✓ Pass

Any Text WCAG AAA ✓ Pass

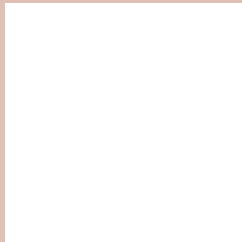
If you want to check with other color combinations, try the [Color Contrast Checker](#).

Yxy 56.8419, 0.3488, 0.3429

Background



This preview shows how black text looks on a background with the Yxy color 56.8419, 0.3488, 0.3429.



This preview shows how white text looks on a background with the Yxy color 56.8419, 0.3488, 0.3429.

Color Blindness Simulation

Color vision deficiency is a very complex topic, and I could not describe the different causes any better than Wikipedia does, so if you want to learn more, you should check out their [article about color blindness](#).

Dichromacy



Original Color

56.8419, 0.3488, 0.3429

Protanopia

56.9289, 0.3303, 0.3470

Deuteranopia

57.0021, 0.3497, 0.3429



Tritanopia

57.0379, 0.3333, 0.3134

Trichromacy



Original Color

56.8419, 0.3488, 0.3429

Protanomaly

57.0034, 0.3372, 0.3456

Deuteranomaly

57.0021, 0.3497, 0.3429

Tritanomaly

56.9358, 0.3387, 0.3234

Monochromacy



Original Color

56.8419, 0.3488, 0.3429

Achromatopsia

57.7580, 0.3127, 0.3290

Achromatomaly

57.3381, 0.3253, 0.3338

CSS Examples

Text

The CSS property to change the color of the text to Yxy 56.8419, 0.3488, 0.3429 is called "color". The color property can be set on classes, ids or directly on the HTML element.

This example shows how text in the color `rgb(224, 192, 180)` looks like.

```
.text, #text, p{  
    color:rgb(224, 192, 180)  
}
```

If you want to add a text shadow in that color use the text-shadow property, you can generate a text shadow directly with our [CSS Text Shadow Generator](#).

Here you see how black text with a 4 pixel rgb(224, 192, 180) colored shadow looks like.

```
.shadow{ text-shadow: 4px 4px 2px rgb(224, 192, 180) }
```

Border

The CSS property to change the border of an element to Yxy 56.8419, 0.3488, 0.3429 is called "border". The border property can be set on classes, ids or directly on the HTML element.

This example shows the color as border, it can be applied via the CSS property "border" or "border-color".

```
.border, #border, table{ border:4px solid rgb(224, 192, 180) }
```

If only the border color should be changed use the property `border-color`.

```
.border{ border-color:rgb(224, 192, 180) }
```

If you want to add a box shadow in that color use:

Here you see how a box with a 4 pixel `rgb(224, 192, 180)` colored shadow looks like.

```
.boxshadow{ -moz-box-shadow:4px 4px 4px  
4px rgb(224, 192, 180); -webkit-box-  
shadow:4px 4px 4px 4px rgb(224, 192, 180);  
box-shadow:4px 4px 4px 4px rgb(224, 192,  
180) }
```


Background

The CSS property to change the background color of an element to Yxy 56.8419, 0.3488, 0.3429 is called "background". The background property can be set on classes, ids or directly on the HTML element.

```
.background, #background, body{  
background: rgb(224, 192, 180) }
```

If only the background color should be changed can be used:

```
.background{ background-color: rgb(224,  
192, 180) }
```

This example shows the color as background, it is applied via the CSS property "background".

To optimize and compress your CSS code, you can use our [online CSS compressor and optimizer](#) based on csstidy. If you want to create a linear or radial gradient as background or border, check our [CSS Gradient Generator](#).

Hey! You found this booklet interesting? Support Converting Colors with the new Membership Option!

The pro membership hides all ads, plus gives you double the colors in the color bucket, and more awesome pro features!

[Learn more, Memberships starting at \\$2.50/m!](#)

**Follow me
on Twitter!**

@ConvertingColor