

# Converting Colors

Yxy(56.8535, 0.3341, 0.3320)

Have a look what the booklet for  
Yxy(56.8535, 0.3341, 0.3320)  
contains.

<b>Yxy(56.6532, 0.3339, 0.3314)</b> .....	3
<b>Conversions</b> .....	4
<b>Details</b> .....	6
<b>Harmonies</b> .....	12
<b>Previews</b> .....	24
<b>Color Blindness Simulation</b> .....	27
<b>CSS Examples</b> .....	30

# Color

**Yxy(56.6532, 0.3339, 0.3314)**

# Conversions

## Conversions Part 1

<b>Format</b>	<b>Color</b>
Hex	D9C1BF
RGB	217, 193, 191
RGB Percent	85%, 76%, 75%
CMY	0.1492, 0.2431, 0.2510
CMYK	0.00, 0.11, 0.12, 0.15
HSL	5°, 25%, 80%
HSV	5°, 12%, 85%
XYZ	57.0806, 56.6532, 57.2173
YIQ	199.9480, 14.9460, 4.4660

# Conversions

## Conversions Part 2

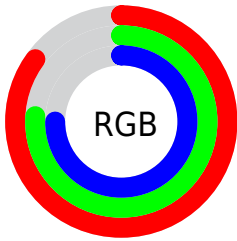
<b>Format</b>	<b>Color</b>
<b>R<sub>YB</sub></b>	217, 193, 191
Decimal	14270911
CIE Lab	79.98, 8.12, 4.10
CIE LCh	80, 9.095, 26.769
Yxy	56.6532, 0.3339, 0.3314
Android (android.graphics.Color)	4292460991 (0xFFD9C1BF)
YUV	199.9480, -4.4114, 14.9546
Hunter-Lab	75.2683, 3.6479, 7.6169

# Details

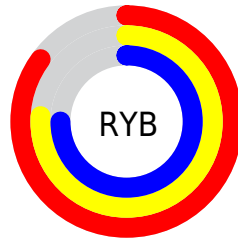
The Yxy color **56.6532, 0.3339, 0.3314** is a light color, and the websafe version is hex **CCCCCC**. A complement of this color would be **64.6572, 0.2944, 0.3266**, and the grayscale version is **57.7449, 0.3127, 0.3290**.

A 20% lighter version of the original color is **95.7268, 0.3177, 0.3309**, and **27.9816, 0.3393, 0.3306** is the 20% darker color. If you saturate the color by 10%, you get **47.5121, 0.3562, 0.3336**, and if you desaturate by 10%, it is **67.1379, 0.3158, 0.3294**.

# Distribution



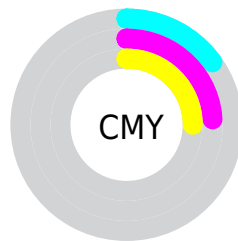
- Red (85%)
- Green (76%)
- Blue (75%)



- Red (85%)
- Yellow (76%)
- Blue (75%)



- Cyan (0%)
- Magenta (11%)
- Yellow (12%)
- Black (15%)




- Cyan (15%)
- Magenta (24%)
- Yellow (25%)

# Brightness & Saturation Gradients

These gradients show how the Yxy color 56.6532, 0.3339, 0.3314 changes by changing the brightness by 10 percent. The first figure shows a shift by +10% for each color and the second figure -10%.

Similar to the brightness gradients but the following saturation gradients show a change of the Yxy color 56.6532, 0.3339, 0.3314 by changing the saturation by 10% instead.

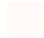



 56.6532, 0.3339,  
0.3314

 56.6532, 0.3339,  
0.3314


412.1485, 0.3236,  
0.3303

 40.7269, 0.3364,  
0.3316


 99.9590, 0.3302,  
0.3310

 28.1057, 0.3395,  
0.3319


128.1072, 0.3288,  
0.3309

 18.4054, 0.3436,  
0.3323


161.0982, 0.3276,  
0.3308

 11.2414, 0.3492,  
0.3327

199.3164, 0.3266,  
0.3307

 6.2295, 0.3573,  
0.3332

243.1461, 0.3257,  
0.3306

 2.9851, 0.3699,  
0.3339

292.9718, 0.3249,

 1.1240, 0.3924,

0.3305

349.1778, 0.3242,  
0.3304

0.3346

0.0000, 1.0000,  
0.0000

0.0000, 0.0000,  
0.0000

56.6532, 0.3339,  
0.3314

56.6532, 0.3339,  
0.3314

47.5121, 0.3562,  
0.3336

67.1379, 0.3158,  
0.3294

39.6532, 0.3837,  
0.3358

79.0096, 0.3012,  
0.3275

33.0213, 0.4171,  
0.3380

92.2486, 0.2899,  
0.3270

27.5546, 0.4565,  
0.3398

93.4858, 0.2900,  
0.3289

■ 23.1855, 0.5008,  
0.3409

■ 19.8399, 0.5467,  
0.3409

■ 17.4342, 0.5886,  
0.3393

■ 15.8716, 0.6198,  
0.3363

■ 15.1422, 0.6351,  
0.3339

# Harmonies

## Analogous

The Analogous color harmony consists of three colors that are next to each other on the color wheel.



56.6532, 0.3258, 0.3212



56.6532, 0.3339, 0.3314



56.6532, 0.3362, 0.3412

# Triad

The Triadic color harmony groups three colors that are evenly spaced from another and form a triangle on the color wheel.



56.6532, 0.3339, 0.3314



56.6532, 0.3108, 0.3457



56.6532, 0.2936, 0.3101

# Complementary

The Complementary color scheme is a pair of colors which are on the opposite of each other on the color wheel.



56.6532, 0.3339, 0.3314



64.6572, 0.2944, 0.3266

# Split Complementary

Split-complementary colors differ from the complementary color scheme. The scheme consists of three colors, the original color and two neighbors of the complement color.



56.6532, 0.2898, 0.3162



56.6532, 0.3339, 0.3314



56.6532, 0.2996, 0.3369

# Square

The Square scheme is like the rectangle color scheme, but the four colors are evenly spaced on the color wheel.



56.6532, 0.3339, 0.3314



56.6532, 0.3227, 0.3498



56.6532, 0.2920, 0.3260



56.6532, 0.3025, 0.3090



# Rectangle

The Rectangle color scheme consists of four colors that form a rectangle on the color wheel.



56.6532, 0.3339, 0.3314



56.6532, 0.3341, 0.3462



56.6532, 0.2920, 0.3260



56.6532, 0.2917, 0.3116

# Sweetspot

The Sweet Spot groups the original color and five complimentary colors.



56.6557, 0.3339, 0.3314



93.5042, 0.3193, 0.3298



56.9265, 0.3154, 0.3016



19.7600, 0.3206, 0.3299



0.0000, 0.0000, 0.0000



21.4041, 0.3127, 0.3290



# Same Dimension

The Same Dimension uses a secret algorithm to generate beautiful new colors.



56.6557, 0.3339, 0.3314



78.6718, 0.3383, 0.3319



62.5118, 0.3321, 0.3459



13.2132, 0.3290, 0.3309



9.2299, 0.6339, 0.3349



0.6559, 0.6168, 0.3485



# Inverse Universe

The Inverse Universe completely reimagines the original color for something new.



64.6572, 0.2944, 0.3266



92.0899, 0.2912, 0.3261



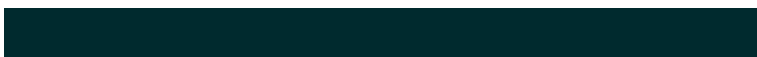
58.4434, 0.2941, 0.3115



14.6474, 0.2982, 0.3271



28.1499, 0.2180, 0.3047

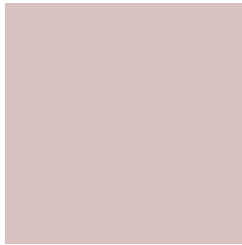


1.8762, 0.2191, 0.3089



# Previews

## White Background



This preview shows how the Yxy color 56.6532, 0.3339, 0.3314 looks on a white background.

## Color Contrast Check

Large Text (above 18pt) WCAG AA × Fail

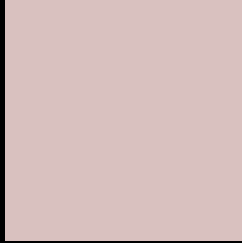
Any Text WCAG AA × Fail

Large Text (above 18pt) WCAG AAA × Fail

Any Text WCAG AAA × Fail



# Black Background



This preview shows how the Yxy color 56.6532, 0.3339, 0.3314 looks on a black background.

## Color Contrast Check

Large Text (above 18pt) WCAG AA ✓ Pass

Any Text WCAG AA ✓ Pass

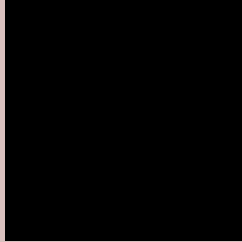
Large Text (above 18pt) WCAG AAA ✓ Pass

Any Text WCAG AAA ✓ Pass

If you want to check with other color combinations, try the [Color Contrast Checker](#).

**Yxy 56.6532, 0.3339, 0.3314**

## Background



This preview shows how black text looks on a background with the Yxy color 56.6532, 0.3339, 0.3314.



This preview shows how white text looks on a background with the Yxy color 56.6532, 0.3339, 0.3314.

# Color Blindness Simulation

Color vision deficiency is a very complex topic, and I could not describe the different causes any better than Wikipedia does, so if you want to learn more, you should check out their [article about color blindness](#).

## Dichromacy



### Original Color

56.6532, 0.3339, 0.3314

### Protanopia

56.9797, 0.3196, 0.3338

### Deuteranopia

56.6765, 0.3366, 0.3302



## Tritanopia

56.7779, 0.3241, 0.3120

# Trichromacy



## Original Color

56.6532, 0.3339, 0.3314

## Protanomaly

56.7400, 0.3246, 0.3326

## Deuteranomaly

56.5209, 0.3358, 0.3302

## Tritanomaly

56.8217, 0.3270, 0.3187

# Monochromacy



## Original Color

56.6532, 0.3339, 0.3314

## Achromatopsia

57.7580, 0.3127, 0.3290

## Achromatomaly

57.0855, 0.3199, 0.3290

# CSS Examples

## Text

The CSS property to change the color of the text to Yxy 56.6532, 0.3339, 0.3314 is called "color". The color property can be set on classes, ids or directly on the HTML element.

This example shows how text in the color `rgb(217, 193, 191)` looks like.

```
.text, #text, p{  
    color:rgb(217, 193, 191)  
}
```

If you want to add a text shadow in that color use the text-shadow property, you can generate a text shadow directly with our [CSS Text Shadow Generator](#).

Here you see how black text with a 4 pixel rgb(217, 193, 191) colored shadow looks like.

```
.shadow{ text-shadow: 4px 4px 2px rgb(217, 193, 191) }
```

## Border

The CSS property to change the border of an element to Yxy 56.6532, 0.3339, 0.3314 is called "border". The border property can be set on classes, ids or directly on the HTML element.

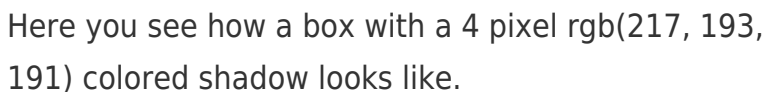
This example shows the color as border, it can be applied via the CSS property "border" or "border-color".

```
.border, #border, table{ border:4px solid rgb(217, 193, 191) }
```

If only the border color should be changed use the property `border-color`.

```
.border{ border-color:rgb(217, 193, 191) }
```

If you want to add a box shadow in that color use:



Here you see how a box with a 4 pixel `rgb(217, 193, 191)` colored shadow looks like.

```
.boxshadow{ -moz-box-shadow:4px 4px 4px 4px rgb(217, 193, 191); -webkit-box-shadow:4px 4px 4px 4px rgb(217, 193, 191); box-shadow:4px 4px 4px 4px rgb(217, 193, 191) }
```



# Background

The CSS property to change the background color of an element to Yxy 56.6532, 0.3339, 0.3314 is called "background". The background property can be set on classes, ids or directly on the HTML element.

```
.background, #background, body{  
background: rgb(217, 193, 191) }
```

If only the background color should be changed can be used:

```
.background{ background-color: rgb(217,  
193, 191) }
```

This example shows the color as background, it is applied via the CSS property "background".

To optimize and compress your CSS code, you can use our [online CSS compressor and optimizer](#) based on csstidy. If you want to create a linear or radial gradient as background or border, check our [CSS Gradient Generator](#).

Hey! You found this booklet interesting? Support Converting Colors with the new Membership Option!

The pro membership hides all ads, plus gives you double the colors in the color bucket, and more awesome pro features!

**[Learn more, Memberships starting at \\$2.50/m!](#)**

**Follow me  
on Twitter!**

@ConvertingColor