

Converting Colors

$Y_{xy}(56.8858, 0.4055, 0.3638)$

Have a look what the booklet for
Yxy(56.8858, 0.4055, 0.3638)
contains.

Yxy(56.8858, 0.4055, 0.3638)	3
<i>Conversions</i>	4
<i>Details</i>	6
<i>Harmonies</i>	12
<i>Previews</i>	24
<i>Color Blindness Simulation</i>	27
<i>CSS Examples</i>	30

Color

Yxy(56.8858, 0.4055, 0.3638)

Conversions

Conversions Part 1

Format	Color
Hex	FFB695
RGB	255, 182, 149
RGB Percent	100%, 71%, 58%
CMY	0.0000, 0.2863, 0.4157
CMYK	0.00, 0.29, 0.42, 0.00
HSL	19°, 100%, 79%
HSV	19°, 42%, 100%
XYZ	63.4062, 56.8858, 36.0735
YIQ	200.0650, 54.1010, 5.2130

Conversions

Conversions Part 2

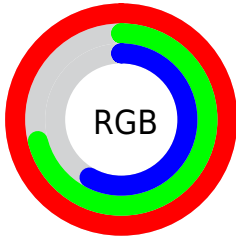
Format	Color
R _Y B	255, 197, 149
Decimal	16758421
CIE Lab	80.12, 22.60, 27.33
CIE LCh	80, 35.458, 50.413
Yxy	56.8858, 0.4055, 0.3638
Android (android.graphics.Color)	4294948501 (0xFFFFB695)
YUV	200.0650, -25.1750, 48.1780
Hunter-Lab	75.4227, 18.0715, 24.4384

Details

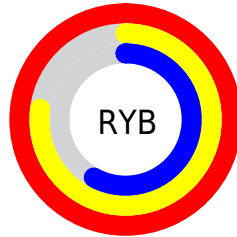
The Yxy color **56.8858, 0.4055, 0.3638** is a light color, and the websafe version is hex **FFCC99**. A complement of this color would be **65.8641, 0.2495, 0.2904**, and the grayscale version is **57.9273, 0.3127, 0.3290**.

A 20% lighter version of the original color is **86.7209, 0.3467, 0.3641**, and **28.3181, 0.4294, 0.3705** is the 20% darker color. If you saturate the color by 10%, you get **49.4034, 0.4377, 0.3715**, and if you desaturate by 10%, it is **65.4361, 0.3772, 0.3553**.

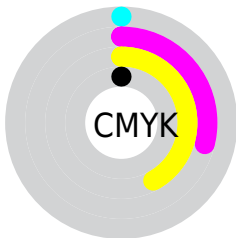
Distribution



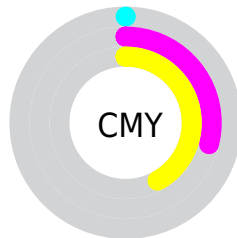
- Red (100%)
- Green (71%)
- Blue (58%)



- Red (100%)
- Yellow (77%)
- Blue (58%)



- Cyan (0%)
- Magenta (29%)
- Yellow (42%)
- Black (0%)




- Cyan (0%)
- Magenta (29%)
- Yellow (42%)

Brightness & Saturation Gradients


These gradients show how the Yxy color 56.8858, 0.4055, 0.3638 changes by changing the brightness by 10 percent. The first figure shows a shift by +10% for each color and the second figure -10%.

Similar to the brightness gradients but the following saturation gradients show a change of the Yxy color 56.8858, 0.4055, 0.3638 by changing the saturation by 10% instead.


 56.8858, 0.4055,
0.3638

 56.8858, 0.4055,
0.3638


413.0213, 0.3604,
0.3488

 40.9136, 0.4162,
0.3668


 100.2985, 0.3895,
0.3589

 28.2515, 0.4297,
0.3702


 128.5078, 0.3833,
0.3569

 18.5154, 0.4470,
0.3740


161.5649, 0.3781,
0.3552

 11.3206, 0.4698,
0.3781


199.8542, 0.3736,
0.3536

 6.2829, 0.5010,
0.3816

243.7601, 0.3696,
0.3522

 3.0179, 0.5495,
0.3849

293.6670, 0.3662,

 1.1411, 0.6220,

0.3510

0.3780

349.9592, 0.3631,
0.3498

0.0128, 0.9779,
0.0221

0.0000, 0.0000,
0.0000

56.8858, 0.4055,
0.3638

56.8858, 0.4055,
0.3638

49.4034, 0.4377,
0.3715

65.4361, 0.3772,
0.3553

42.9633, 0.4731,
0.3774

75.1159, 0.3530,
0.3466

37.5104, 0.5101,
0.3803

85.9587, 0.3325,
0.3381

32.9918, 0.5458,
0.3789

98.0022, 0.3152,
0.3302

■ 29.3487, 0.5765,
0.3727

100.0000, 0.3127,
0.3290

■ 26.9010, 0.5968,
0.3644

Harmonies

Analogous

The Analogous color harmony consists of three colors that are next to each other on the color wheel.



56.8858, 0.3914, 0.3267



56.8858, 0.4055, 0.3638



56.8858, 0.3925, 0.3958

Triad

The Triadic color harmony groups three colors that are evenly spaced from another and form a triangle on the color wheel.



56.8858, 0.4055, 0.3638



56.8858, 0.2696, 0.3695



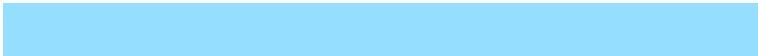
56.8858, 0.2647, 0.2550

Complementary

The Complementary color scheme is a pair of colors which are on the opposite of each other on the color wheel.



56.8858, 0.4055, 0.3638



65.8641, 0.2495, 0.2904

Split Complementary

Split-complementary colors differ from the complementary color scheme. The scheme consists of three colors, the original color and two neighbors of the complement color.



56.8858, 0.2368, 0.2601



56.8858, 0.4055, 0.3638



56.8858, 0.2393, 0.3235

Square

The Square scheme is like the rectangle color scheme, but the four colors are evenly spaced on the color wheel.



56.8858, 0.4055, 0.3638



56.8858, 0.3128, 0.4039



56.8858, 0.2279, 0.2837



56.8858, 0.3071, 0.2667

Rectangle

The Rectangle color scheme consists of four colors that form a rectangle on the color wheel.



56.8858, 0.4055, 0.3638



56.8858, 0.3713, 0.4093



56.8858, 0.2279, 0.2837



56.8858, 0.2535, 0.2547

Sweetspot

The Sweet Spot groups the original color and five complimentary colors.



56.8794, 0.4055, 0.3638



85.4640, 0.3333, 0.3385



48.0952, 0.3453, 0.2542



17.9767, 0.3358, 0.3396



0.0000, 0.0000, 0.0000



21.4041, 0.3127, 0.3290

Same Dimension

The Same Dimension uses a secret algorithm to generate beautiful new colors.



56.8794, 0.4055, 0.3638



50.5050, 0.4324, 0.3704



82.1625, 0.3831, 0.4140



18.9089, 0.3287, 0.3365



14.2888, 0.5938, 0.3667



1.5761, 0.5717, 0.3842

Inverse Universe

The Inverse Universe completely reimagines the original color for something new.



65.8641, 0.2495, 0.2904



60.5399, 0.2380, 0.2811



42.4362, 0.2390, 0.2261



19.4718, 0.2980, 0.3214



20.2063, 0.1955, 0.2239



2.1624, 0.1993, 0.2373

Previews

White Background



This preview shows how the Yxy color 56.8858, 0.4055, 0.3638 looks on a white background.

Color Contrast Check

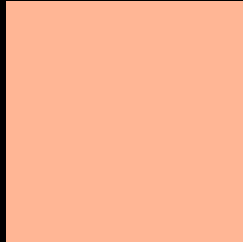
Large Text (above 18pt) WCAG AA × Fail

Any Text WCAG AA × Fail

Large Text (above 18pt) WCAG AAA × Fail

Any Text WCAG AAA × Fail

Black Background



This preview shows how the Yxy color 56.8858, 0.4055, 0.3638 looks on a black background.

Color Contrast Check

Large Text (above 18pt) WCAG AA ✓ Pass

Any Text WCAG AA ✓ Pass

Large Text (above 18pt) WCAG AAA ✓ Pass

Any Text WCAG AAA ✓ Pass

If you want to check with other color combinations, try the [Color Contrast Checker](#).

Yxy 56.8858, 0.4055, 0.3638

Background



This preview shows how black text looks on a background with the Yxy color 56.8858, 0.4055, 0.3638.



This preview shows how white text looks on a background with the Yxy color 56.8858, 0.4055, 0.3638.

Color Blindness Simulation

Color vision deficiency is a very complex topic, and I could not describe the different causes any better than Wikipedia does, so if you want to learn more, you should check out their [article about color blindness](#).

Dichromacy



Original Color

56.8858, 0.4055, 0.3638

Protanopia

57.2782, 0.3552, 0.3792

Deuteranopia

57.0304, 0.3858, 0.3783



Tritanopia

56.8185, 0.3703, 0.3166

Trichromacy



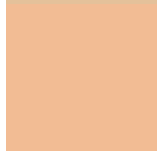
Original Color

56.8858, 0.4055, 0.3638



Protanomaly

56.9670, 0.3733, 0.3737



Deuteranomaly

56.9818, 0.3924, 0.3730



Tritanomaly

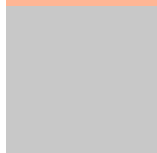
56.5953, 0.3835, 0.3334

Monochromacy



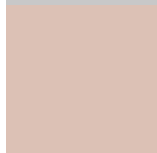
Original Color

56.8858, 0.4055, 0.3638



Achromatopsia

57.7580, 0.3127, 0.3290



Achromatomaly

56.6918, 0.3444, 0.3430

CSS Examples

Text

The CSS property to change the color of the text to Yxy 56.8858, 0.4055, 0.3638 is called "color". The color property can be set on classes, ids or directly on the HTML element.

This example shows how text in the color `rgb(255, 182, 149)` looks like.

```
.text, #text, p{  
    color:rgb(255, 182, 149)  
}
```

If you want to add a text shadow in that color use the text-shadow property, you can generate a text shadow directly with our [CSS Text Shadow Generator](#).

Here you see how black text with a 4 pixel rgb(255, 182, 149) colored shadow looks like.

```
.shadow{ text-shadow: 4px 4px 2px rgb(255, 182, 149) }
```

Border

The CSS property to change the border of an element to Yxy 56.8858, 0.4055, 0.3638 is called "border". The border property can be set on classes, ids or directly on the HTML element.

This example shows the color as border, it can be applied via the CSS property "border" or "border-color".

```
.border, #border, table{ border:4px solid rgb(255, 182, 149) }
```

If only the border color should be changed use the property `border-color`.

```
.border{ border-color:rgb(255, 182, 149) }
```

If you want to add a box shadow in that color use:

Here you see how a box with a 4 pixel `rgb(255, 182, 149)` colored shadow looks like.

```
.boxshadow{ -moz-box-shadow:4px 4px 4px  
4px rgb(255, 182, 149); -webkit-box-  
shadow:4px 4px 4px 4px rgb(255, 182, 149);  
box-shadow:4px 4px 4px 4px rgb(255, 182,  
149) }
```


Background

The CSS property to change the background color of an element to Yxy 56.8858, 0.4055, 0.3638 is called "background". The background property can be set on classes, ids or directly on the HTML element.

```
.background, #background, body{  
background: rgb(255, 182, 149) }
```

If only the background color should be changed can be used:

```
.background{ background-color: rgb(255,  
182, 149) }
```

This example shows the color as background, it is applied via the CSS property "background".

To optimize and compress your CSS code, you can use our [online CSS compressor and optimizer](#) based on csstidy. If you want to create a linear or radial gradient as background or border, check our [CSS Gradient Generator](#).

Hey! You found this booklet interesting? Support Converting Colors with the new Membership Option!

The pro membership hides all ads, plus gives you double the colors in the color bucket, and more awesome pro features!

[Learn more, Memberships starting at \\$2.50/m!](#)

**Follow me
on Twitter!**

@ConvertingColor