

Converting Colors

$Yxy(56.9209, 0.3352, 0.3328)$

Have a look what the booklet for
Yxy(56.9209, 0.3352, 0.3328)
contains.

Yxy(56.7631, 0.3356, 0.3325)	3
Conversions	4
Details	6
Harmonies	12
Previews	24
Color Blindness Simulation	27
CSS Examples	30

Color

Yxy(56.7631, 0.3356, 0.3325)

Conversions

Conversions Part 1

Format	Color
Hex	DAC1BE
RGB	218, 193, 190
RGB Percent	85%, 76%, 75%
CMY	0.1449, 0.2432, 0.2548
CMYK	0.00, 0.12, 0.13, 0.14
HSL	6°, 28%, 80%
HSV	6°, 13%, 86%
XYZ	57.2923, 56.7631, 56.6607
YIQ	200.1330, 15.8630, 4.3670

Conversions

Conversions Part 2

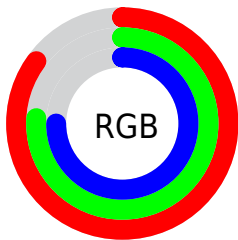
Format	Color
R _Y B	218, 193, 190
Decimal	14336446
CIE Lab	80.05, 8.37, 4.73
CIE LCh	80, 9.617, 29.451
Yxy	56.7631, 0.3356, 0.3325
Android (android.graphics.Color)	4292526526 (0xFFDAC1BE)
YUV	200.1330, -4.9956, 15.6694
Hunter-Lab	75.3413, 3.8908, 8.1497

Details

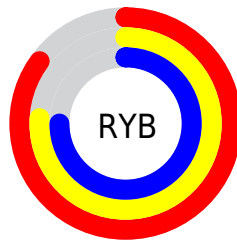
The Yxy color $56.7631, 0.3356, 0.3325$ is a light color, and the websafe version is hex `CCCCCC`. A complement of this color would be $64.6634, 0.2931, 0.3255$, and the grayscale version is $57.8747, 0.3127, 0.3290$.

A 20% lighter version of the original color is $95.6652, 0.3183, 0.3319$, and $28.0579, 0.3416, 0.3322$ is the 20% darker color. If you saturate the color by 10%, you get $47.8227, 0.3581, 0.3354$, and if you desaturate by 10%, it is $66.9879, 0.3173, 0.3297$.

Distribution



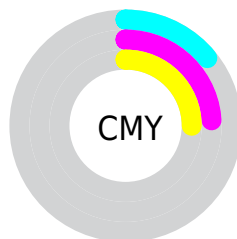
- Red (85%)
- Green (76%)
- Blue (75%)



- Red (85%)
- Yellow (76%)
- Blue (75%)



- Cyan (0%)
- Magenta (12%)
- Yellow (13%)
- Black (14%)





- Cyan (14%)
- Magenta (24%)
- Yellow (25%)

Brightness & Saturation Gradients


These gradients show how the Yxy color 56.7631, 0.3356, 0.3325 changes by changing the brightness by 10 percent. The first figure shows a shift by +10% for each color and the second figure -10%.


Similar to the brightness gradients but the following saturation gradients show a change of the Yxy color 56.7631, 0.3356, 0.3325 by changing the saturation by 10% instead.


 56.7631, 0.3356,
0.3325

 56.7631, 0.3356,
0.3325


412.5610, 0.3245,
0.3309

 40.8151, 0.3383,
0.3329


 100.1194, 0.3316,
0.3320

 28.1746, 0.3417,
0.3333


128.2965, 0.3301,
0.3317

 18.4573, 0.3461,
0.3338


161.3188, 0.3288,
0.3316

 11.2788, 0.3522,
0.3345

199.5706, 0.3277,
0.3314

 6.2547, 0.3609,
0.3354

243.4363, 0.3268,
0.3313

 3.0006, 0.3744,
0.3366

293.3003, 0.3259,

 1.1320, 0.3988,

0.3311

349.5471, 0.3252,
0.3310

0.3382

0.0051, 0.9762,
0.0238

0.0000, 0.0000,
0.0000

56.7631, 0.3356,
0.3325

56.7631, 0.3356,
0.3325

47.8227, 0.3581,
0.3354

66.9879, 0.3173,
0.3297

40.1086, 0.3857,
0.3385

78.5371, 0.3024,
0.3272

33.5696, 0.4189,
0.3413

91.4305, 0.2905,
0.3254

28.1479, 0.4580,
0.3438

93.6548, 0.2906,
0.3289

■ 23.7808, 0.5016,
0.3452

■ 20.3993, 0.5466,
0.3451

■ 17.9264, 0.5876,
0.3430

■ 16.2732, 0.6183,
0.3390

■ 15.5302, 0.6325,
0.3360

Harmonies

Analogous

The Analogous color harmony consists of three colors that are next to each other on the color wheel.



56.7631, 0.3275, 0.3217



56.7631, 0.3356, 0.3325



56.7631, 0.3374, 0.3427

Triad

The Triadic color harmony groups three colors that are evenly spaced from another and form a triangle on the color wheel.



56.7631, 0.3356, 0.3325



56.7631, 0.3096, 0.3460



56.7631, 0.2932, 0.3087

Complementary

The Complementary color scheme is a pair of colors which are on the opposite of each other on the color wheel.



56.7631, 0.3356, 0.3325



64.6634, 0.2931, 0.3255

Split Complementary

Split-complementary colors differ from the complementary color scheme. The scheme consists of three colors, the original color and two neighbors of the complement color.



56.7631, 0.2886, 0.3147



56.7631, 0.3356, 0.3325



56.7631, 0.2980, 0.3364

Square

The Square scheme is like the rectangle color scheme, but the four colors are evenly spaced on the color wheel.



56.7631, 0.3356, 0.3325



56.7631, 0.3222, 0.3509



56.7631, 0.2904, 0.3248



56.7631, 0.3030, 0.3081

Rectangle

The Rectangle color scheme consists of four colors that form a rectangle on the color wheel.



56.7631, 0.3356, 0.3325



56.7631, 0.3348, 0.3478



56.7631, 0.2904, 0.3248



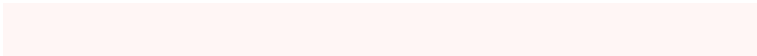
56.7631, 0.2910, 0.3101

Sweetspot

The Sweet Spot groups the original color and five complimentary colors.



56.7656, 0.3356, 0.3325



93.6782, 0.3193, 0.3301



56.6684, 0.3163, 0.3005



19.8039, 0.3205, 0.3303



0.0000, 0.0000, 0.0000



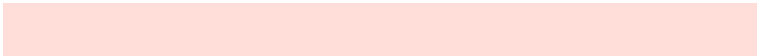
21.4041, 0.3127, 0.3290

Same Dimension

The Same Dimension uses a secret algorithm to generate beautiful new colors.



56.7656, 0.3356, 0.3325



77.8619, 0.3403, 0.3332



63.1829, 0.3335, 0.3483



13.2720, 0.3289, 0.3315



9.3737, 0.6310, 0.3372



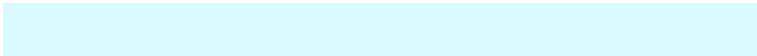
0.6839, 0.6091, 0.3546

Inverse Universe

The Inverse Universe completely reimagines the original color for something new.



64.6634, 0.2931, 0.3255



90.8991, 0.2897, 0.3248



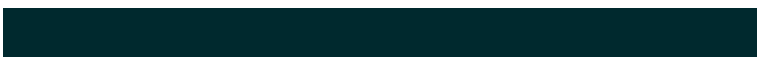
57.8970, 0.2927, 0.3090



14.5819, 0.2982, 0.3265



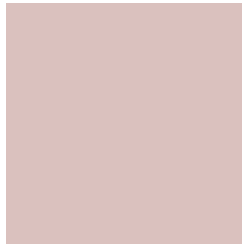
26.4949, 0.2154, 0.2956



1.7855, 0.2171, 0.3015

Previews

White Background



This preview shows how the Yxy color 56.7631, 0.3356, 0.3325 looks on a white background.

Color Contrast Check

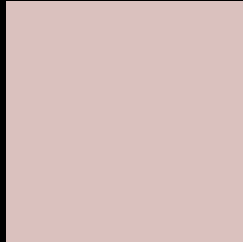
Large Text (above 18pt) WCAG AA × Fail

Any Text WCAG AA × Fail

Large Text (above 18pt) WCAG AAA × Fail

Any Text WCAG AAA × Fail

Black Background



This preview shows how the Yxy color 56.7631, 0.3356, 0.3325 looks on a black background.

Color Contrast Check

Large Text (above 18pt) WCAG AA ✓ Pass

Any Text WCAG AA ✓ Pass

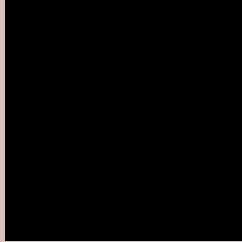
Large Text (above 18pt) WCAG AAA ✓ Pass

Any Text WCAG AAA ✓ Pass

If you want to check with other color combinations, try the [Color Contrast Checker](#).

Yxy 56.7631, 0.3356, 0.3325

Background



This preview shows how black text looks on a background with the Yxy color 56.7631, 0.3356, 0.3325.



This preview shows how white text looks on a background with the Yxy color 56.7631, 0.3356, 0.3325.

Color Blindness Simulation

Color vision deficiency is a very complex topic, and I could not describe the different causes any better than Wikipedia does, so if you want to learn more, you should check out their [article about color blindness](#).

Dichromacy



Original Color

56.7631, 0.3356, 0.3325

Protanopia

56.9349, 0.3204, 0.3350

Deuteranopia

56.7891, 0.3382, 0.3314



Tritanopia

56.9335, 0.3249, 0.3120

Trichromacy



Original Color

56.7631, 0.3356, 0.3325

Protanomaly

56.6955, 0.3254, 0.3338

Deuteranomaly

56.6326, 0.3374, 0.3314

Tritanomaly

56.9295, 0.3286, 0.3199

Monochromacy



Original Color

56.7631, 0.3356, 0.3325

Achromatopsia

57.7580, 0.3127, 0.3290

Achromatomaly

57.1834, 0.3214, 0.3302

CSS Examples

Text

The CSS property to change the color of the text to Yxy 56.7631, 0.3356, 0.3325 is called "color". The color property can be set on classes, ids or directly on the HTML element.

This example shows how text in the color `rgb(218, 193, 190)` looks like.

```
.text, #text, p{  
    color:rgb(218, 193, 190)  
}
```

If you want to add a text shadow in that color use the text-shadow property, you can generate a text shadow directly with our [CSS Text Shadow Generator](#).

Here you see how black text with a 4 pixel rgb(218, 193, 190) colored shadow looks like.

```
.shadow{ text-shadow: 4px 4px 2px rgb(218, 193, 190) }
```

Border

The CSS property to change the border of an element to Yxy 56.7631, 0.3356, 0.3325 is called "border". The border property can be set on classes, ids or directly on the HTML element.

This example shows the color as border, it can be applied via the CSS property "border" or "border-color".

```
.border, #border, table{ border:4px solid rgb(218, 193, 190) }
```

If only the border color should be changed use the property `border-color`.

```
.border{ border-color:rgb(218, 193, 190) }
```

If you want to add a box shadow in that color use:

Here you see how a box with a 4 pixel `rgb(218, 193, 190)` colored shadow looks like.

```
.boxshadow{ -moz-box-shadow:4px 4px 4px  
4px rgb(218, 193, 190); -webkit-box-  
shadow:4px 4px 4px 4px rgb(218, 193, 190);  
box-shadow:4px 4px 4px 4px rgb(218, 193,  
190) }
```


Background

The CSS property to change the background color of an element to Yxy 56.7631, 0.3356, 0.3325 is called "background". The background property can be set on classes, ids or directly on the HTML element.

```
.background, #background, body{  
background: rgb(218, 193, 190) }
```

If only the background color should be changed can be used:

```
.background{ background-color: rgb(218,  
193, 190) }
```

This example shows the color as background, it is applied via the CSS property "background".

To optimize and compress your CSS code, you can use our [online CSS compressor and optimizer](#) based on csstidy. If you want to create a linear or radial gradient as background or border, check our [CSS Gradient Generator](#).

Hey! You found this booklet interesting? Support Converting Colors with the new Membership Option!

The pro membership hides all ads, plus gives you double the colors in the color bucket, and more awesome pro features!

[Learn more, Memberships starting at \\$2.50/m!](#)

**Follow me
on Twitter!**

@ConvertingColor