

# Converting Colors

Yxy(57.0292, 0.3353, 0.3332)

Have a look what the booklet for  
Yxy(57.0292, 0.3353, 0.3332)  
contains.

<b>Yxy(57.2067, 0.3354, 0.3337)</b> .....	3
<b>Conversions</b> .....	4
<b>Details</b> .....	6
<b>Harmonies</b> .....	12
<b>Previews</b> .....	24
<b>Color Blindness Simulation</b> .....	27
<b>CSS Examples</b> .....	30

# Color

**Yxy(57.2067, 0.3354, 0.3337)**

# Conversions

## Conversions Part 1

Format	Color
Hex	DAC2BE
RGB	218, 194, 190
RGB Percent	85%, 76%, 75%
CMY	0.1451, 0.2392, 0.2549
CMYK	0.00, 0.11, 0.13, 0.15
HSL	9°, 27%, 80%
HSV	9°, 13%, 85%
XYZ	57.4981, 57.2067, 56.7267
YIQ	200.7200, 15.5880, 3.8440

# Conversions

## Conversions Part 2

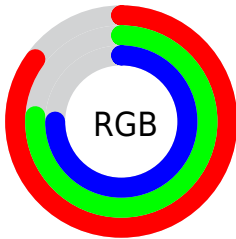
<b>Format</b>	<b>Color</b>
R <sub>YB</sub>	218, 195, 190
Decimal	14336702
CIE Lab	80.30, 7.80, 5.10
CIE LCh	80, 9.320, 33.147
Yxy	57.2067, 0.3354, 0.3337
Android (android.graphics.Color)	4292526782 (0xFFDAC2BE)
YUV	200.7200, -5.2850, 15.1546
Hunter-Lab	75.6351, 3.3350, 8.4768

# Details

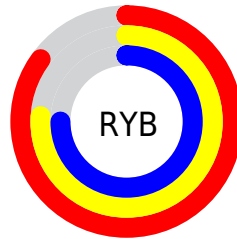
The Yxy color  $57.2067, 0.3354, 0.3337$  is a light color, and the websafe version is hex `CCCCCC`. A complement of this color would be  $64.0964, 0.2931, 0.3243$ , and the grayscale version is  $58.2534, 0.3127, 0.3290$ .

A 20% lighter version of the original color is  $96.2850, 0.3183, 0.3329$ , and  $28.3488, 0.3413, 0.3337$  is the 20% darker color. If you saturate the color by 10%, you get  $48.5269, 0.3576, 0.3376$ , and if you desaturate by 10%, it is  $67.0793, 0.3172, 0.3300$ .

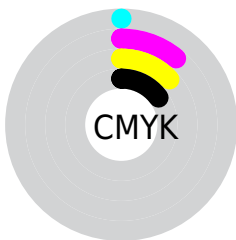
# Distribution



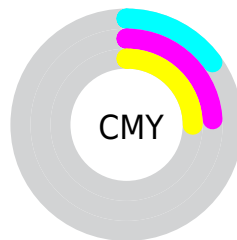
- Red (85%)
- Green (76%)
- Blue (75%)



- Red (85%)
- Yellow (76%)
- Blue (75%)



- Cyan (0%)
- Magenta (11%)
- Yellow (13%)
- Black (15%)




- Cyan (15%)
- Magenta (24%)
- Yellow (25%)


# Brightness & Saturation Gradients

These gradients show how the Yxy color 57.2067, 0.3354, 0.3337 changes by changing the brightness by 10 percent. The first figure shows a shift by +10% for each color and the second figure -10%.


Similar to the brightness gradients but the following saturation gradients show a change of the Yxy color 57.2067, 0.3354, 0.3337 by changing the saturation by 10% instead.




 57.2067, 0.3354,  
0.3337

 57.2067, 0.3354,  
0.3337

414.2234, 0.3244,  
0.3315

 41.1712, 0.3381,  
0.3342


 100.7667, 0.3315,  
0.3330

 28.4529, 0.3414,  
0.3348


129.0601, 0.3300,  
0.3327

 18.6673, 0.3458,  
0.3356


162.2081, 0.3287,  
0.3324

 11.4302, 0.3517,  
0.3366

200.5953, 0.3276,  
0.3322

 6.3569, 0.3603,  
0.3379

244.6061, 0.3266,  
0.3320

 3.0633, 0.3736,  
0.3397

294.6247, 0.3258,

 1.1649, 0.3975,

0.3318

351.0357, 0.3251,  
0.3317

0.3424

0.0327, 0.8713,  
0.1287

0.0000, 0.0000,  
0.0000

57.2067, 0.3354,  
0.3337

57.2067, 0.3354,  
0.3337

48.5269, 0.3576,  
0.3376

67.0793, 0.3172,  
0.3300

40.9874, 0.3846,  
0.3417

78.1797, 0.3024,  
0.3266

34.5429, 0.4169,  
0.3456

90.5250, 0.2904,  
0.3239

29.1423, 0.4547,  
0.3489

93.6446, 0.2906,  
0.3289

■ 24.7302, 0.4969,  
0.3510

■ 21.2463, 0.5407,  
0.3511

■ 18.6233, 0.5812,  
0.3487

■ 16.7849, 0.6126,  
0.3436

■ 15.8949, 0.6281,  
0.3395

# Harmonies

## Analogous

The Analogous color harmony consists of three colors that are next to each other on the color wheel.



57.2067, 0.3283, 0.3231



57.2067, 0.3354, 0.3337



57.2067, 0.3363, 0.3433

# Triad

The Triadic color harmony groups three colors that are evenly spaced from another and form a triangle on the color wheel.



57.2067, 0.3354, 0.3337



57.2067, 0.3082, 0.3445



57.2067, 0.2948, 0.3090

# Complementary

The Complementary color scheme is a pair of colors which are on the opposite of each other on the color wheel.



57.2067, 0.3354, 0.3337



64.0964, 0.2931, 0.3243

# Split Complementary

Split-complementary colors differ from the complementary color scheme. The scheme consists of three colors, the original color and two neighbors of the complement color.



57.2067, 0.2896, 0.3142



57.2067, 0.3354, 0.3337



57.2067, 0.2973, 0.3348

# Square

The Square scheme is like the rectangle color scheme, but the four colors are evenly spaced on the color wheel.



57.2067, 0.3354, 0.3337



57.2067, 0.3204, 0.3499



57.2067, 0.2906, 0.3236



57.2067, 0.3047, 0.3091



# Rectangle

The Rectangle color scheme consists of four colors that form a rectangle on the color wheel.



57.2067, 0.3354, 0.3337



57.2067, 0.3333, 0.3478



57.2067, 0.2906, 0.3236



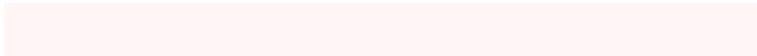
57.2067, 0.2924, 0.3102

# Sweetspot

The Sweet Spot groups the original color and five complimentary colors.



57.2092, 0.3354, 0.3337



93.9100, 0.3192, 0.3304



56.6006, 0.3170, 0.3016



19.8623, 0.3205, 0.3307



0.0000, 0.0000, 0.0000



21.4041, 0.3127, 0.3290



# Same Dimension

The Same Dimension uses a secret algorithm to generate beautiful new colors.



57.2092, 0.3354, 0.3337



78.6183, 0.3401, 0.3346



63.6028, 0.3333, 0.3493



13.3506, 0.3288, 0.3324



9.6173, 0.6263, 0.3409



0.7211, 0.5995, 0.3622

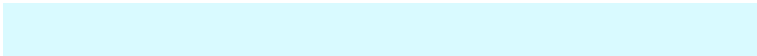


# Inverse Universe

The Inverse Universe completely reimagines the original color for something new.



64.0964, 0.2931, 0.3243



90.0105, 0.2896, 0.3233



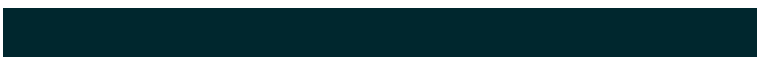
57.4407, 0.2927, 0.3079



14.4953, 0.2982, 0.3256



24.3966, 0.2120, 0.2832

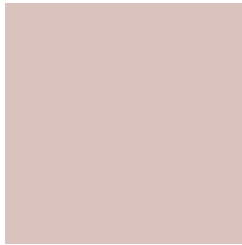


1.6694, 0.2143, 0.2914



# Previews

## White Background



This preview shows how the Yxy color 57.2067, 0.3354, 0.3337 looks on a white background.

## Color Contrast Check

Large Text (above 18pt) WCAG AA × Fail

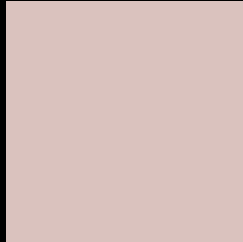
Any Text WCAG AA × Fail

Large Text (above 18pt) WCAG AAA × Fail

Any Text WCAG AAA × Fail



# Black Background



This preview shows how the Yxy color 57.2067, 0.3354, 0.3337 looks on a black background.

## Color Contrast Check

Large Text (above 18pt) WCAG AA ✓ Pass

Any Text WCAG AA ✓ Pass

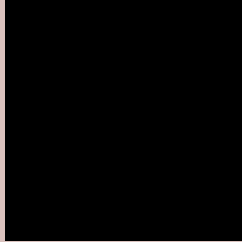
Large Text (above 18pt) WCAG AAA ✓ Pass

Any Text WCAG AAA ✓ Pass

If you want to check with other color combinations, try the [Color Contrast Checker](#).

**Yxy 57.2067, 0.3354, 0.3337**

## Background



This preview shows how black text looks on a background with the Yxy color 57.2067, 0.3354, 0.3337.

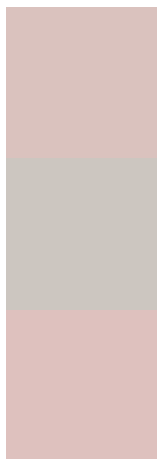


This preview shows how white text looks on a background with the Yxy color 57.2067, 0.3354, 0.3337.

# Color Blindness Simulation

Color vision deficiency is a very complex topic, and I could not describe the different causes any better than Wikipedia does, so if you want to learn more, you should check out their [article about color blindness](#).

## Dichromacy



### Original Color

57.2067, 0.3354, 0.3337

### Protanopia

57.0313, 0.3219, 0.3362

### Deuteranopia

57.3872, 0.3389, 0.3325



## Tritanopia

56.9335, 0.3249, 0.3120

# Trichromacy



## Original Color

57.2067, 0.3354, 0.3337

## Protanomaly

57.2494, 0.3268, 0.3361

## Deuteranomaly

57.2298, 0.3381, 0.3325

## Tritanomaly

56.9295, 0.3286, 0.3199

# Monochromacy



## Original Color

57.2067, 0.3354, 0.3337

## Achromatopsia

58.4078, 0.3127, 0.3290

## Achromatomaly

57.6848, 0.3206, 0.3302

# CSS Examples

## Text

The CSS property to change the color of the text to Yxy 57.2067, 0.3354, 0.3337 is called "color". The color property can be set on classes, ids or directly on the HTML element.

This example shows how text in the color `rgb(218, 194, 190)` looks like.

```
.text, #text, p{  
    color:rgb(218, 194, 190)  
}
```

If you want to add a text shadow in that color use the text-shadow property, you can generate a text shadow directly with our [CSS Text Shadow Generator](#).

Here you see how black text with a 4 pixel rgb(218, 194, 190) colored shadow looks like.

```
.shadow{ text-shadow: 4px 4px 2px rgb(218, 194, 190) }
```

## Border

The CSS property to change the border of an element to Yxy 57.2067, 0.3354, 0.3337 is called "border". The border property can be set on classes, ids or directly on the HTML element.

This example shows the color as border, it can be applied via the CSS property "border" or "border-color".

```
.border, #border, table{ border:4px solid rgb(218, 194, 190) }
```

If only the border color should be changed use the property `border-color`.

```
.border{ border-color:rgb(218, 194, 190) }
```

If you want to add a box shadow in that color use:

Here you see how a box with a 4 pixel `rgb(218, 194, 190)` colored shadow looks like.

```
.boxshadow{ -moz-box-shadow:4px 4px 4px  
4px rgb(218, 194, 190); -webkit-box-  
shadow:4px 4px 4px 4px rgb(218, 194, 190);  
box-shadow:4px 4px 4px 4px rgb(218, 194,  
190) }
```



# Background

The CSS property to change the background color of an element to  $\text{Yxy } 57.2067, 0.3354, 0.3337$  is called "background". The background property can be set on classes, ids or directly on the HTML element.

```
.background, #background, body{  
background: rgb(218, 194, 190) }
```

If only the background color should be changed can be used:

```
.background{ background-color: rgb(218,  
194, 190) }
```

This example shows the color as background, it is applied via the CSS property "background".

To optimize and compress your CSS code, you can use our [online CSS compressor and optimizer](#) based on csstidy. If you want to create a linear or radial gradient as background or border, check our [CSS Gradient Generator](#).

Hey! You found this booklet interesting? Support Converting Colors with the new Membership Option!

The pro membership hides all ads, plus gives you double the colors in the color bucket, and more awesome pro features!

**[Learn more, Memberships starting at \\$2.50/m!](#)**

**Follow me  
on Twitter!**

@ConvertingColor