

Converting Colors

Yxy(57.0403, 0.3346, 0.3433)

Have a look what the booklet for
Yxy(57.0403, 0.3346, 0.3433)
contains.

Yxy(56.9376, 0.3348, 0.3432)	3
Conversions	4
Details	6
Harmonies	12
Previews	24
Color Blindness Simulation	27
CSS Examples	30

Color

Yxy(56.9376, 0.3348, 0.3432)

Conversions

Conversions Part 1

Format	Color
Hex	D4C4B8
RGB	212, 196, 184
RGB Percent	83%, 77%, 72%
CMY	0.1686, 0.2314, 0.2784
CMYK	0.00, 0.08, 0.13, 0.17
HSL	26°, 25%, 78%
HSV	26°, 13%, 83%
XYZ	55.5440, 56.9376, 53.4205
YIQ	199.4160, 13.3880, -0.3400

Conversions

Conversions Part 2

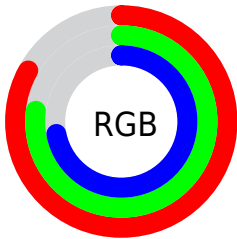
Format	Color
R _Y B	212, 205, 184
Decimal	13943992
CIE Lab	80.14, 3.61, 8.02
CIE LCh	80, 8.799, 65.780
Yxy	56.9376, 0.3348, 0.3432
Android (android.graphics.Color)	4292134072 (0xFFD4C4B8)
YUV	199.4160, -7.6001, 11.0362
Hunter-Lab	75.4570, -0.6556, 10.8450

Details

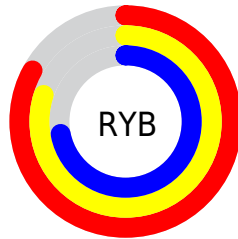
The Yxy color $56.9376, 0.3348, 0.3432$ is a light color, and the websafe version is hex `CCCCCC`. A complement of this color would be $56.2614, 0.2923, 0.3144$, and the grayscale version is $57.4245, 0.3127, 0.3290$.

A 20% lighter version of the original color is $97.8018, 0.3216, 0.3415$, and $28.1528, 0.3405, 0.3464$ is the 20% darker color. If you saturate the color by 10%, you get $50.8680, 0.3546, 0.3546$, and if you desaturate by 10%, it is $63.5871, 0.3177, 0.3323$.

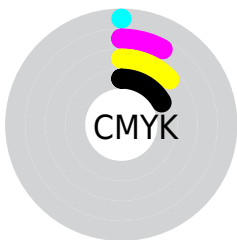
Distribution



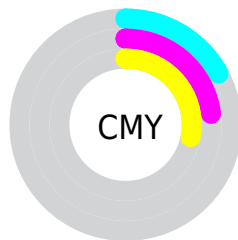
- Red (83%)
- Green (77%)
- Blue (72%)



- Red (83%)
- Yellow (80%)
- Blue (72%)



- Cyan (0%)
- Magenta (8%)
- Yellow (13%)
- Black (17%)





- Cyan (17%)
- Magenta (23%)
- Yellow (28%)

Brightness & Saturation Gradients


These gradients show how the Yxy color 56.9376, 0.3348, 0.3432 changes by changing the brightness by 10 percent. The first figure shows a shift by +10% for each color and the second figure -10%.


Similar to the brightness gradients but the following saturation gradients show a change of the Yxy color 56.9376, 0.3348, 0.3432 by changing the saturation by 10% instead.


 56.9376, 0.3348,
0.3432

 56.9376, 0.3348,
0.3432


413.2154, 0.3241,
0.3364

 40.9551, 0.3374,
0.3448


 100.3741, 0.3310,
0.3408

 28.2840, 0.3406,
0.3468


128.5970, 0.3295,
0.3399

 18.5399, 0.3449,
0.3494


161.6688, 0.3283,
0.3391

 11.3383, 0.3507,
0.3529

199.9739, 0.3272,
0.3384

 6.2949, 0.3590,
0.3578

243.8967, 0.3263,
0.3378

 3.0252, 0.3718,
0.3652

293.8217, 0.3255,

 1.1449, 0.3983,

0.3373

0.3813

350.1331, 0.3247,
0.3368

0.0160, 0.8659,
0.1341

0.0000, 0.0000,
0.0000

56.9376, 0.3348,
0.3432

56.9376, 0.3348,
0.3432

50.8680, 0.3546,
0.3546

63.5871, 0.3177,
0.3323

45.3545, 0.3773,
0.3663

70.8246, 0.3029,
0.3222

40.3825, 0.4030,
0.3778

78.6675, 0.2902,
0.3128

35.9339, 0.4314,
0.3882

86.2078, 0.2866,
0.3180

■ 31.9894, 0.4618,
0.3966

■ 92.7367, 0.2872,
0.3289

■ 28.5283, 0.4927,
0.4016

■ 25.5280, 0.5222,
0.4019

■ 22.9631, 0.5479,
0.3969

■ 21.4460, 0.5631,
0.3911

Harmonies

Analogous

The Analogous color harmony consists of three colors that are next to each other on the color wheel.



56.9376, 0.3345, 0.3343



56.9376, 0.3348, 0.3432



56.9376, 0.3291, 0.3485

Triad

The Triadic color harmony groups three colors that are evenly spaced from another and form a triangle on the color wheel.



56.9376, 0.3348, 0.3432



56.9376, 0.2974, 0.3336



56.9376, 0.3061, 0.3104

Complementary

The Complementary color scheme is a pair of colors which are on the opposite of each other on the color wheel.



56.9376, 0.3348, 0.3432



56.2614, 0.2923, 0.3144

Split Complementary

Split-complementary colors differ from the complementary color scheme. The scheme consists of three colors, the original color and two neighbors of the complement color.



56.9376, 0.2964, 0.3099



56.9376, 0.3348, 0.3432



56.9376, 0.2914, 0.3230

Square

The Square scheme is like the rectangle color scheme, but the four colors are evenly spaced on the color wheel.



56.9376, 0.3348, 0.3432



56.9376, 0.3074, 0.3430



56.9376, 0.2911, 0.3144



56.9376, 0.3178, 0.3156

Rectangle

The Rectangle color scheme consists of four colors that form a rectangle on the color wheel.



56.9376, 0.3348, 0.3432



56.9376, 0.3227, 0.3491



56.9376, 0.2911, 0.3144



56.9376, 0.3025, 0.3096

Sweetspot

The Sweet Spot groups the original color and five complimentary colors.



56.9401, 0.3348, 0.3432



95.6963, 0.3190, 0.3332



52.4724, 0.3234, 0.3099



20.3132, 0.3203, 0.3340



0.0000, 0.0000, 0.0000



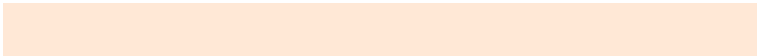
21.4041, 0.3127, 0.3290

Same Dimension

The Same Dimension uses a secret algorithm to generate beautiful new colors.



56.9401, 0.3348, 0.3432



83.6564, 0.3404, 0.3466



63.3870, 0.3327, 0.3588



13.2867, 0.3280, 0.3390



13.4301, 0.5606, 0.3930



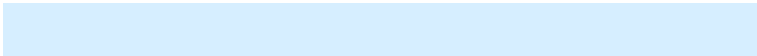
0.9725, 0.5304, 0.4171

Inverse Universe

The Inverse Universe completely reimagines the original color for something new.



56.2614, 0.2923, 0.3144



82.4184, 0.2876, 0.3108



50.2126, 0.2919, 0.2973



13.1754, 0.2982, 0.3188



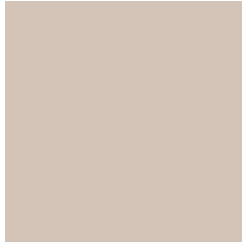
11.6080, 0.1842, 0.1832



0.8630, 0.1919, 0.2108

Previews

White Background



This preview shows how the Yxy color 56.9376, 0.3348, 0.3432 looks on a white background.

Color Contrast Check

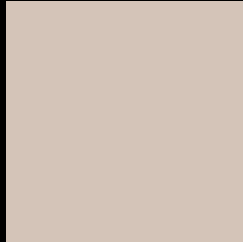
Large Text (above 18pt) WCAG AA × Fail

Any Text WCAG AA × Fail

Large Text (above 18pt) WCAG AAA × Fail

Any Text WCAG AAA × Fail

Black Background



This preview shows how the Yxy color 56.9376, 0.3348, 0.3432 looks on a black background.

Color Contrast Check

Large Text (above 18pt) WCAG AA ✓ Pass

Any Text WCAG AA ✓ Pass

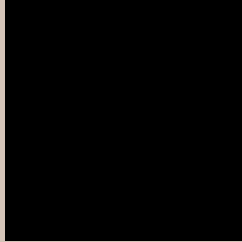
Large Text (above 18pt) WCAG AAA ✓ Pass

Any Text WCAG AAA ✓ Pass

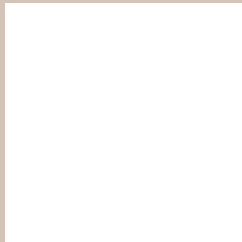
If you want to check with other color combinations, try the [Color Contrast Checker](#).

Yxy 56.9376, 0.3348, 0.3432

Background



This preview shows how black text looks on a background with the Yxy color 56.9376, 0.3348, 0.3432.



This preview shows how white text looks on a background with the Yxy color 56.9376, 0.3348, 0.3432.

Color Blindness Simulation

Color vision deficiency is a very complex topic, and I could not describe the different causes any better than Wikipedia does, so if you want to learn more, you should check out their [article about color blindness](#).

Dichromacy



Original Color

56.9376, 0.3348, 0.3432

Protanopia

57.0128, 0.3288, 0.3446

Deuteranopia

56.8900, 0.3439, 0.3371



Tritanopia

56.7004, 0.3192, 0.3107

Trichromacy



Original Color

56.9376, 0.3348, 0.3432

Protanomaly

56.8452, 0.3306, 0.3433

Deuteranomaly

56.7028, 0.3404, 0.3384

Tritanomaly

56.5596, 0.3252, 0.3221

Monochromacy



Original Color

56.9376, 0.3348, 0.3432

Achromatopsia

57.1125, 0.3127, 0.3290

Achromatomaly

57.1206, 0.3204, 0.3338

CSS Examples

Text

The CSS property to change the color of the text to Yxy 56.9376, 0.3348, 0.3432 is called "color". The color property can be set on classes, ids or directly on the HTML element.

This example shows how text in the color `rgb(212, 196, 184)` looks like.

```
.text, #text, p{  
    color:rgb(212, 196, 184)  
}
```

If you want to add a text shadow in that color use the text-shadow property, you can generate a text shadow directly with our [CSS Text Shadow Generator](#).

Here you see how black text with a 4 pixel rgb(212, 196, 184) colored shadow looks like.

```
.shadow{ text-shadow: 4px 4px 2px rgb(212, 196, 184) }
```

Border

The CSS property to change the border of an element to Yxy 56.9376, 0.3348, 0.3432 is called "border". The border property can be set on classes, ids or directly on the HTML element.

This example shows the color as border, it can be applied via the CSS property "border" or "border-color".

```
.border, #border, table{ border:4px solid rgb(212, 196, 184) }
```

If only the border color should be changed use the property `border-color`.

```
.border{ border-color:rgb(212, 196, 184) }
```

If you want to add a box shadow in that color use:

Here you see how a box with a 4 pixel `rgb(212, 196, 184)` colored shadow looks like.

```
.boxshadow{ -moz-box-shadow:4px 4px 4px  
4px rgb(212, 196, 184); -webkit-box-  
shadow:4px 4px 4px 4px rgb(212, 196, 184);  
box-shadow:4px 4px 4px 4px rgb(212, 196,  
184) }
```


Background

The CSS property to change the background color of an element to Yxy 56.9376, 0.3348, 0.3432 is called "background". The background property can be set on classes, ids or directly on the HTML element.

```
.background, #background, body{  
background: rgb(212, 196, 184) }
```

If only the background color should be changed can be used:

```
.background{ background-color: rgb(212,  
196, 184) }
```

This example shows the color as background, it is applied via the CSS property "background".

To optimize and compress your CSS code, you can use our [online CSS compressor and optimizer](#) based on csstidy. If you want to create a linear or radial gradient as background or border, check our [CSS Gradient Generator](#).

Hey! You found this booklet interesting? Support Converting Colors with the new Membership Option!

The pro membership hides all ads, plus gives you double the colors in the color bucket, and more awesome pro features!

[Learn more, Memberships starting at \\$2.50/m!](#)

**Follow me
on Twitter!**

@ConvertingColor